

PRODUCT INFORMATION PACKET

Model No: 120097.00

Catalog No: 120097.00

General Purpose Motor, 0.75 HP, 3 Ph, 60 Hz, 208-230/460 V, 1200 RPM, 143TC Frame, TEFC



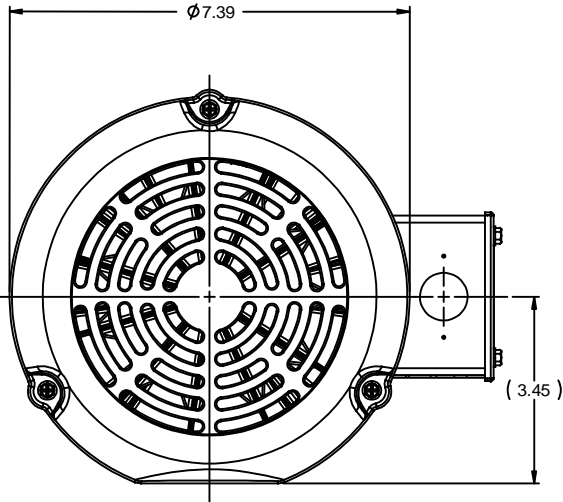
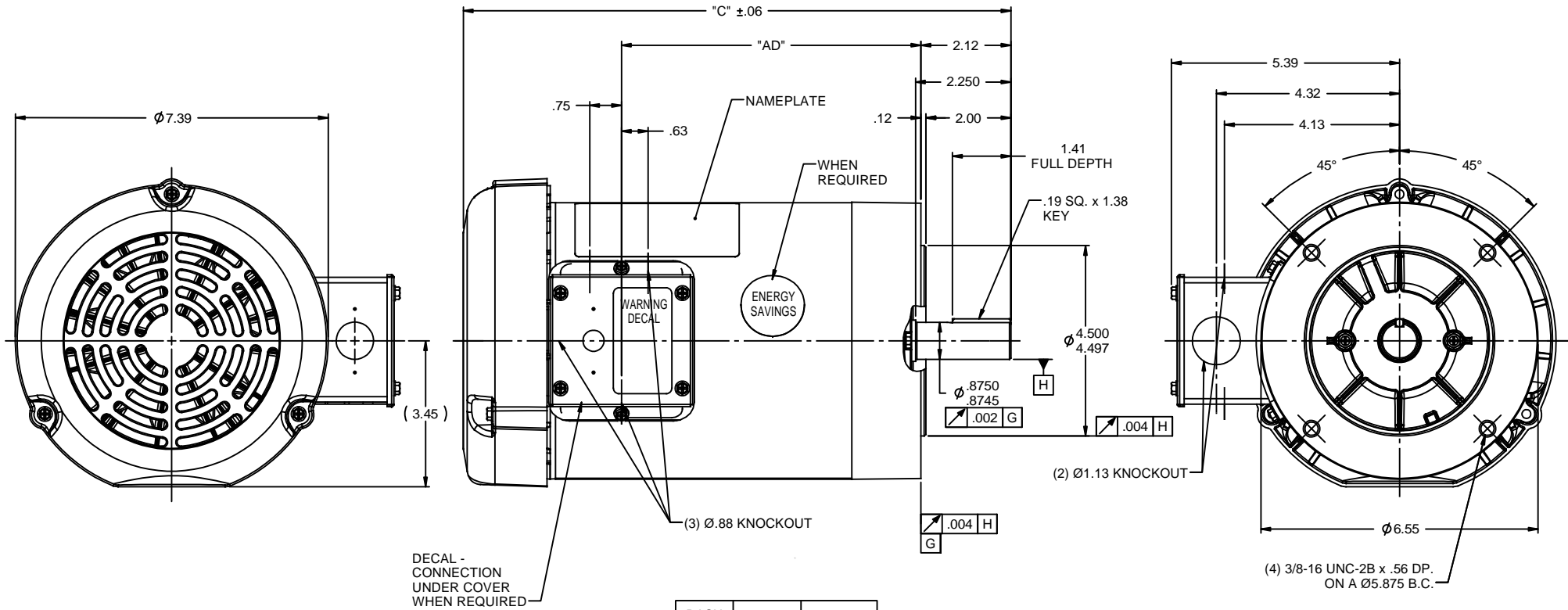
Regal and are trademarks of Regal Rexnord Corporation or one of its affiliated companies.
©2022 Regal Rexnord Corporation, All Rights Reserved. MC017097E

Nameplate Specifications

Output HP	0.75 Hp	Output KW	0.56 kW
Frequency	60 Hz	Voltage	208-230/460 V
Current	3.0-3.0/1.5 A	Speed	1140 rpm
Service Factor	1.15	Phase	3
Efficiency	75.5 %	Power Factor	62
Duty	Continuous	Insulation Class	B
Design Code	B	KVA Code	J
Frame	143TC	Enclosure	Totally Enclosed Fan Cooled
Thermal Protection	No Protection	Ambient Temperature	40 °C
Drive End Bearing Size	6205	Opp Drive End Bearing Size	6203
UL	Recognized	CSA	Y
CE	N	IP Code	43
Number of Speeds	1		

Technical Specifications

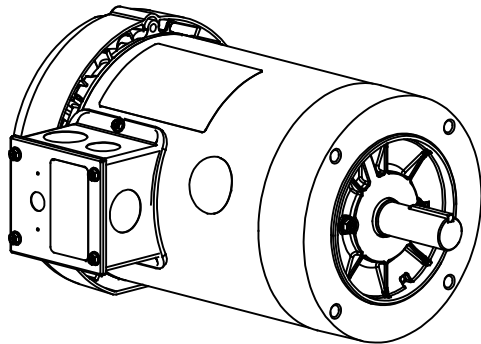
Electrical Type	Squirrel Cage Induction Run	Starting Method	Across The Line
Poles	6	Rotation	Reversible
Resistance Main	6.44 Ohms	Mounting	Round
Motor Orientation	Horizontal	Drive End Bearing	Ball
Opp Drive End Bearing	Ball	Frame Material	Rolled Steel
Shaft Type	T	Overall Length	11.92 in
Frame Length	6.00 in	Shaft Diameter	0.875 in
Shaft Extension	2.25 in	Assembly/Box Mounting	F1 ONLY
Connection Drawing	005010.01	Outline Drawing	028777-600



DECAL - CONNECTION UNDER COVER WHEN REQUIRED

DASH NO.	"C"	"AD"
550	11.42	5.56
600	11.92	6.06
650	12.42	6.56
675	12.67	6.81
700	12.92	7.06
750	13.42	7.56
800	13.92	8.06

NOTE:
1) GASKETS THROUGHOUT



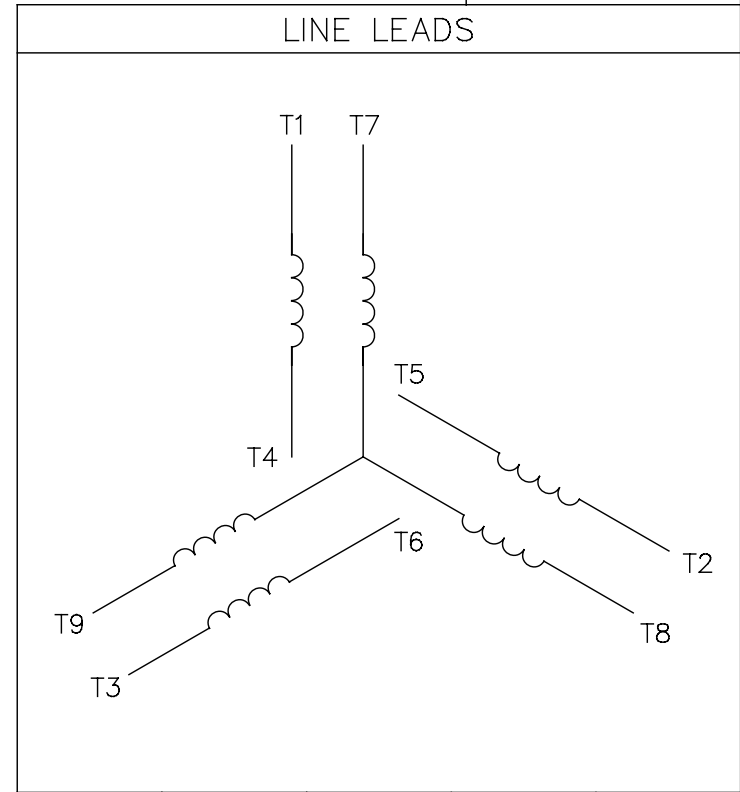
REVISION			BY & DATE	CHK	ANG	±1/2"	FINISH	GENERAL PURPOSE	SIZE	DRAWING NO	REV
05	ADDED FAN GUARD DIMENSIONS PER SALES	PG	1/5/2011	DEC					B	028777	05
04	ADDED DASH NO. 675	PG	5/21/2010	X							
03	ADDED ENERGY SAVINGS DECAL	PG	5/19/2010	.XX							
02	ADD "C" DIM. PER ISAAC 09-4157	LST	10/1/2009	.XXX							
01	REVISED GD&T POSITIONING & CALLOUT	KMM	8/27/07	.XXX							

THIRD ANGLE PROJECTION

TOLERANCES UNLESS SPECIFIED		LEESON ELECTRIC MOTORS GEARMOTORS AND DRIVES		DRAWN KMM 08/02/07	
DEC	INCHES	CHK		APP	
X	±.1	APPR		SCALE	7:16
.XX	±.03	REF	028504.00	FMF	120038.00
.XXX	±.005	PAGE		OF	
.XXX	±.0005	REV			
TITLE OUTLINE - 140TC FRAME		FINISH GENERAL PURPOSE			
TEFC - "C" FACE					
MATL					
RFP		PREV			
NETWORK FILE NAME 028777					

005010-01

VIEW FROM OUTSIDE OF MOTOR AT SWITCH END.



VOLTAGE	L1	L2	L3	JOIN & INSULATE
HIGH	T1	T2	T3	(T4,T7) (T5,T8) (T6,T9)
LOW	T1,T7	T2,T8	T3,T9	T4,T5,T6

				TOLERANCES UNLESS SPECIFIED		REGAL ™ Regal Beloit America, Inc.		DRAWN RDW 04/12/02			
				DEC.	INCHES			CHK			
				.X	±.1			APPD			
				.XX	±.01	TITLE EXTERNAL WIRING DIAGRAM 3 PHASE W/O PROTECTOR		SCALE 1=1			
				.XXX	±.005			REF FIG.2-51			
A	UPDATED TO REGAL LOGO	SAJ 06/26/15	AJY	.XXXX	±.0005	MAT'L DECAL - 004014		FMF			
NO.	REVISION	BY & DATE	CHK	ANG	±1/2"	FINISH		PREV			
THIS DRAWING IN DESIGN AND DETAIL IS OUR PROPERTY AND MUST NOT BE USED EXCEPT IN CONNECTION WITH OUR WORK ALL RIGHTS OF DESIGN AND INVENTION ARE RESERVED THIS IS AN ELECTRONICALLY GENERATED DOCUMENT - DO NOT SCALE THIS PRINT				RFP	04/12/02	CAD FILE		00501001	SIZE	DRAWING NO.	REV.
				DIST		BRF-NLV		A	005010-01	A	



LEESON ELECTRIC CORPORATION
 TYPICAL PERFORMANCE CURVE for AC MOTOR

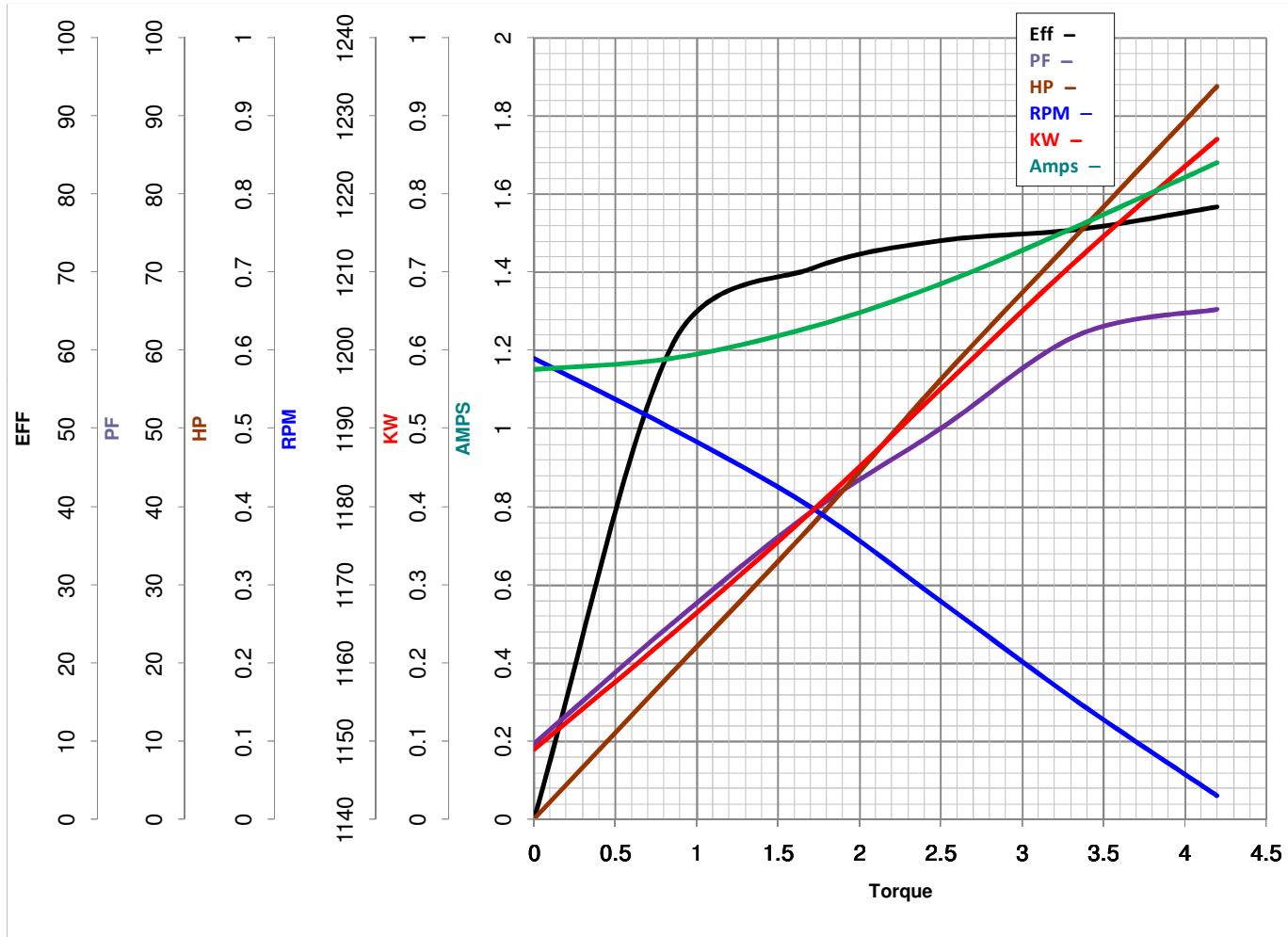
Curve at 460 Volts HP 0.75 PHASE 3
60 HZ
0.75 HP VOLTS 208-230/460

Model No 120097.00

Catalog No 120097.00

HZ 60

RPM 1140



Torque in Lb.Ft

FL TORQUE 3.35 Lb.Ft
 BD TORQUE 10.5 Lb.Ft
 LR TORQUE 7.8 Lb.Ft

FL AMPS 3-3/1.5
 PU TORQUE 7.8 Lb.Ft
 LR AMPS 7.15

WINDING T63642-3

Date 5/22/2018