

**BALDOR® • RELIANCE** 

**Product Information Packet**

**1215W**

**2HP, 1500/1800RPM, 3PH, 50/60HZ, 3628M, GRND**

| Part Detail |         |             |            |             |                      |               |    |
|-------------|---------|-------------|------------|-------------|----------------------|---------------|----|
| Revision:   | S       | Status:     | PRD/A      | Change #:   |                      | Proprietary:  | No |
| Type:       | AC      | Elec. Spec: | G2WG0018   | CD Diagram: | CD0251               | Mfg Plant:    |    |
| Mech. Spec: | G12-118 | Layout:     | G2LY0118   | Poles:      | 04                   | Created Date: |    |
| Base:       | RG      | Eff. Date:  | 12-15-2021 | Leads:      | 9#16 12"FRM STAT IRN |               | Y  |

| Specs             |   |  |  |
|-------------------|---|--|--|
| Nameplate Output: | 2 |  |  |

## Nameplate NP3412L

|                |               |              |             |
|----------------|---------------|--------------|-------------|
| <b>CAT.NO.</b> | 1215W         |              |             |
| <b>HP</b>      | 2             | <b>VOLTS</b> | 208-230/460 |
| <b>PHASE</b>   | 3             | <b>AMPS</b>  | 5.9-5.6/2.8 |
| <b>HZ</b>      | 50//60        | <b>RPM</b>   | 1500//1800  |
| <b>SER.NO</b>  |               |              |             |
| <b>SPEC.</b>   | G12-118D-0018 |              |             |
| <b>BLANK</b>   |               |              |             |

| Parts List  |  |          |
|-------------|--|----------|
| Part Number | Description                              | Quantity |
| SA051565    | SA G12-118D-0018                         | 1.000 EA |
| RA046412    | RA G12-118D-0018                         | 1.000 EA |
| G2BA1000A02 | BASE, MACH                               | 1.000 EA |
| 10XN4414A20 | 7/16-14 X 1-1/4 HEX HD CAP SCREW         | 2.000 EA |
| HW1001A44   | WASHER,7/16 SPLT LK, ZN                  | 2.000 EA |
| HW1000A45X  | 7/16 USS FLAT WASHER X                   | 2.000 EA |
| LD5000A01   | LEAD ASSY, ML1400DF14 7" RING TRM EA END | 1.000 EA |
| 52XF1032G04 | S0-32 X 1/4, HX HD SR SL                 | 1.000 EA |
| G4GS5000    | G14-23 GASKET X                          | 1.000 EA |
| HA6766A03   | BRACKET FOR 'GE' MANUAL STARTERS         | 1.000 EA |
| 19XB2514A20 | 1/4-14X1-1/4 HX WS, TY B                 | 2.000 EA |
| HW1001A25   | LOCKWASHER 1/4, ZINC PLT .493 OD, .255 I | 2.000 EA |
| HA2025A01   | LEAD BUSHING                             | 1.000 EA |
| RM1006A01   | GROMMET,#2196:.75ID,.9375GROOVE DIA,.062 | 1.000 EA |
| 52XN1032A04 | 10-32X1/4 HX HD SLTD SER X               | 3.000 EA |
| 51XW1032A08 | 10/32X1/2 HXWSHR HD, SL, SERATED         | 1.000 EA |
| XY1032A02   | 10-32 HEX NUT DIRECTIONAL SERRATION      | 2.000 EA |
| 36CB4516    | 750LIPPED CB LID - GALVANNEAL            | 1.000 EA |
| 37GS1001    | GASKET, CONDUIT BOX LID, .06 THICK LEXID | 1.000 EA |
| 51XW0832A07 | 8-32 X .44, TAPTITE II, HEX WSHR SLTD SE | 4.000 EA |
| G2EP1900A01 | ENDPLATE, MACH                           | 2.000 EA |
| HW5100A08   | W3118-035 WVY WSHR (WB)                  | 2.000 EA |
| HA3104A13   | THRUBOLT 5/16-18 X 11.750 OHIO ROD       | 4.000 EA |
| HW1001A31   | LOCKWASHER 5/16, ZINC PLT.591 OD, .319 I | 4.000 EA |

| Parts List (continued) |  |          |
|------------------------|--|----------|
| Part Number            | Description                              | Quantity |
| XY3118A12              | 5/16-18 HEX NUT DIRECTIONAL SERRATION    | 4.000 EA |
| G2FH1805A01            | L.H. GRINDER GUARD, MACH                 | 1.000 EA |
| 10XN3816A20            | 3/8-16X1 1/4 HEX HD CAP                  | 4.000 EA |
| HW1001A38              | LOCKWASHER 3/8, ZINC PLT .688 OD, .382 I | 4.000 EA |
| 85XU0407S04            | 4X1/4 U DRIVE PIN STAINLESS              | 2.000 EA |
| G2FH1804A01            | R.H. GRINDER GUARD, MACH                 | 1.000 EA |
| 10XN3816A20            | 3/8-16X1 1/4 HEX HD CAP                  | 4.000 EA |
| HW1001A38              | LOCKWASHER 3/8, ZINC PLT .688 OD, .382 I | 4.000 EA |
| G2AP1002A01SP          | TOOL REST, MACH (G) MACHINED 6 ON        | 1.000 EA |
| HA6049A01SP            | SUPPORT, TOOL REST, MACH                 | 1.000 EA |
| 10XN4420A24            | 7/16-20X1 1/2 HEX HD SCR                 | 3.000 EA |
| HW1000A44              | WASHER, 7/16 FLAT, ZN                    | 3.000 EA |
| HW1001A44              | WASHER,7/16 SPLT LK, ZN                  | 3.000 EA |
| G2AP1002A01SP          | TOOL REST, MACH (G) MACHINED 6 ON        | 1.000 EA |
| HA6049A01SP            | SUPPORT, TOOL REST, MACH                 | 1.000 EA |
| 10XN4420A24            | 7/16-20X1 1/2 HEX HD SCR                 | 3.000 EA |
| HW1000A44              | WASHER, 7/16 FLAT, ZN                    | 3.000 EA |
| HW1001A44              | WASHER,7/16 SPLT LK, ZN                  | 3.000 EA |
| G2FH1807A01            | L.H. GRINDER GUARD COVER, MACH           | 1.000 EA |
| 10XN3816A20            | 3/8-16X1 1/4 HEX HD CAP                  | 4.000 EA |
| HW1001A38              | LOCKWASHER 3/8, ZINC PLT .688 OD, .382 I | 4.000 EA |
| G2FH1806A01            | R.H. GRINDER GUARD COVER, MACH           | 1.000 EA |
| 10XN3816A20            | 3/8-16X1 1/4 HEX HD CAP                  | 4.000 EA |
| HW1001A38              | LOCKWASHER 3/8, ZINC PLT .688 OD, .382 I | 4.000 EA |

Product Information Packet: 1215W - 2HP,1500/1800RPM,3PH,50/60HZ,3628M,GRND

|             |  |          |
|-------------|--|----------|
| HA6051      | FLANGE, WHEEL, CAST                      | 4.000 EA |
| HW3022J06   | 1/4X.625 ROLLED SPR PIN                  | 2.000 EA |
| XZ2007A62SP | 1 1/4-7 NUT LH HEX (NC)                  | 1.000 EA |
| XZ2007A12SP | 1 1/4-7 NUT RH HX(NC)(F/S                | 1.000 EA |
| G2AP1001ZP  | SPARK BREAKER FOR 12" GRINDER GUARD      | 1.000 EA |
| 10XN3816A16 | 3/8-16 X 1 HEX HD CAP SCREW              | 2.000 EA |
| HW1000A38   | WASHER, 3/8" FLAT, SAE Z/P               | 2.000 EA |
| HW1001A38   | LOCKWASHER 3/8, ZINC PLT .688 OD, .382 I | 2.000 EA |
| G2AP1001ZP  | SPARK BREAKER FOR 12" GRINDER GUARD      | 1.000 EA |
| 10XN3816A16 | 3/8-16 X 1 HEX HD CAP SCREW              | 2.000 EA |
| HW1000A38   | WASHER, 3/8" FLAT, SAE Z/P               | 2.000 EA |
| HW1001A38   | LOCKWASHER 3/8, ZINC PLT .688 OD, .382 I | 2.000 EA |
| MJ1000A02   | GREASE, MOBIL POLYREX EM - 124047        | 0.050 LB |
| HA1000A45   | DR11501.020 BRG GRD,B-N                  | 1.000 EA |
| GA9         | EYESHIELD ASSY                           | 1.000 EA |
| HA6103A01   | SUPPORT ARM, EYESHIELD (PLATED)          | 2.000 EA |
| 10XN3118A16 | 5/16-18X1 HEX HD CAP                     | 2.000 EA |
| HW1001A31   | LOCKWASHER 5/16, ZINC PLT.591 OD, .319 I | 2.000 EA |
| HA6094A01SP | CLAMP FOR SUPPORT ARM X PLATED           | 2.000 EA |
| WD4102A01   | SR-6L-1 HEYCO STRN RELIEF OR 23MPO6L10 M | 2.000 EA |
| MG1000G01   | MUNSELL 5.93PB 3.81/ 2.71                | 0.017 GA |
| LB1389A03   | CONSOLIDATED GRINDER LABEL - 9",10",12"  | 1.000 EA |
| LB1112      | LABEL GRDR STARTER BOX GR                | 1.000 EA |
| LB5008      | TAG, CONNECTION PRINT SHOP               | 1.000 EA |
| MN909       | EYESHIELD MTG INSTR. FOR GA9, GA10 & GA1 | 1.000 EA |
| CN1900A01   | MAN. STARTER 'GE' NO. CR1062R3AAP2000, 3 | 1.000 EA |

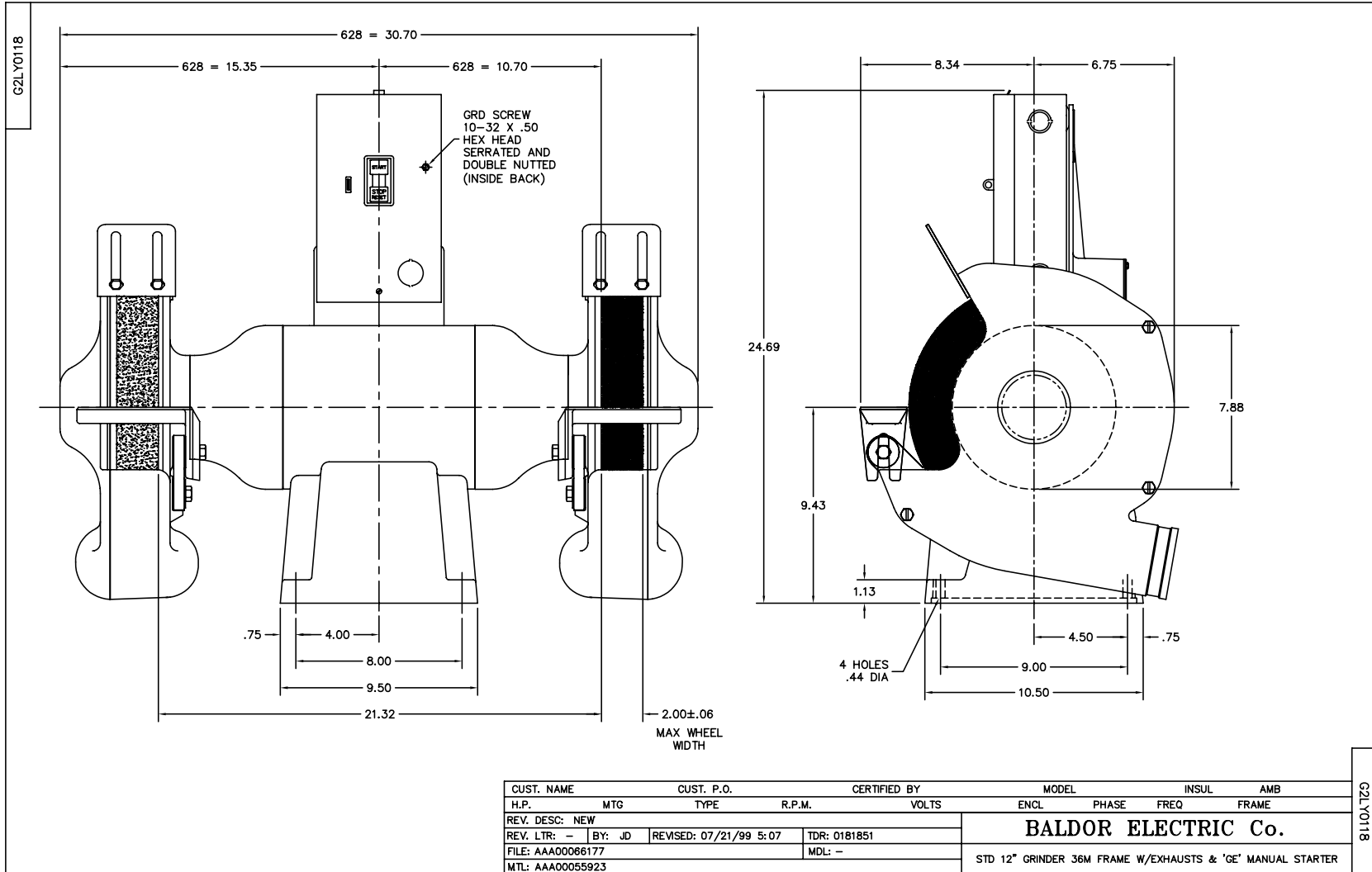
Product Information Packet: 1215W - 2HP,1500/1800RPM,3PH,50/60HZ,3628M,GRND

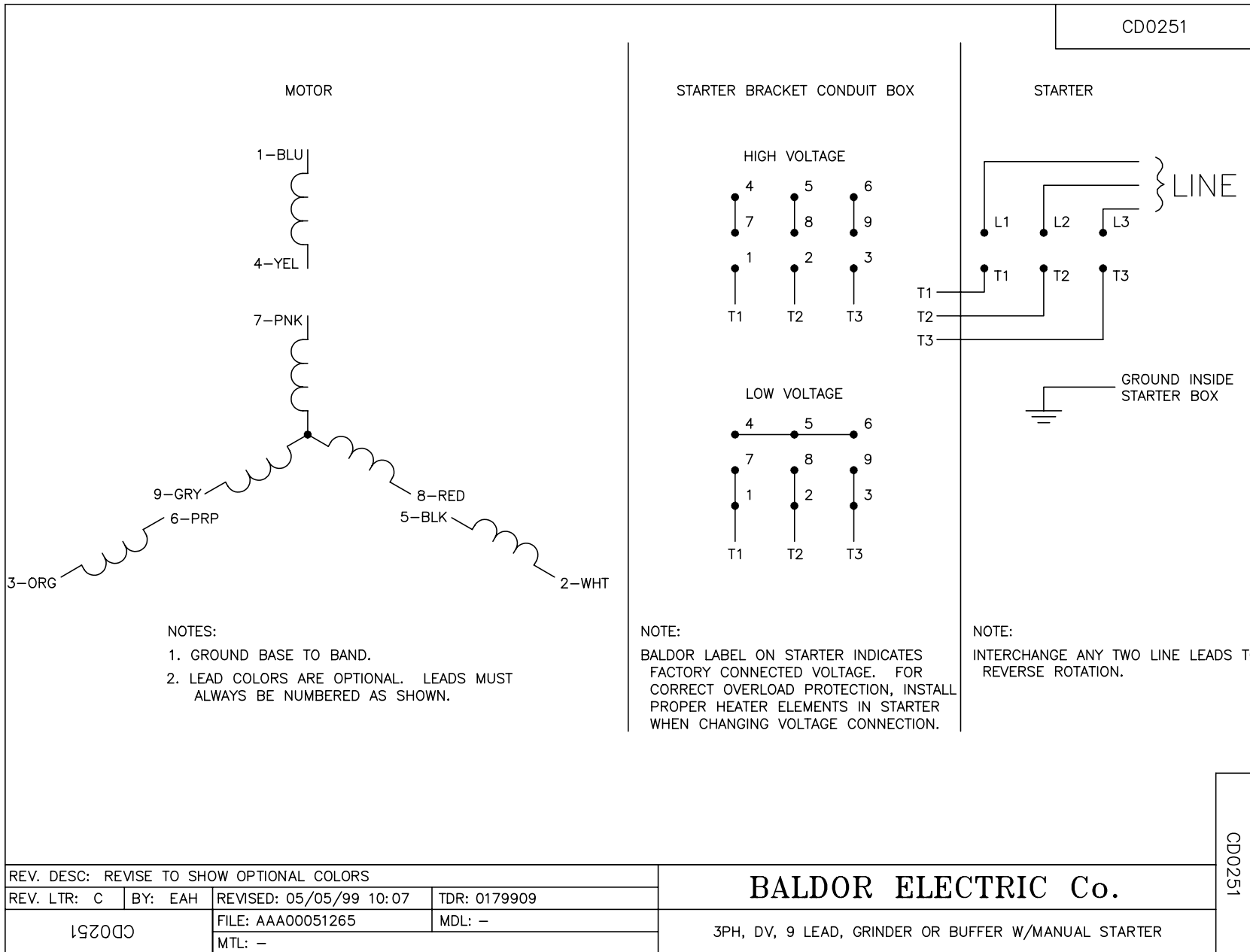
|            |  |          |
|------------|--|----------|
| CN2006695A | HEATER, 'GE' NO. CR123C695A (FOR 'GE' ST | 3.000 EA |
| LB1119N    | WARNING LABEL                            | 1.000 EA |
| NP3412L    | ALUM NP FOR 8" UTILITY GRINDERS-BUFFERS  | 1.000 EA |
| G4PA1000   | PACKAGING GROUP                          | 1.000 EA |
| MN903      | INSTR MANUAL FOR GRINDERS 9/03           | 1.000 EA |
| LB1618     | PROPOSITION 65 WARNING LABEL 1-1/2 X 1/2 | 1.000 EA |

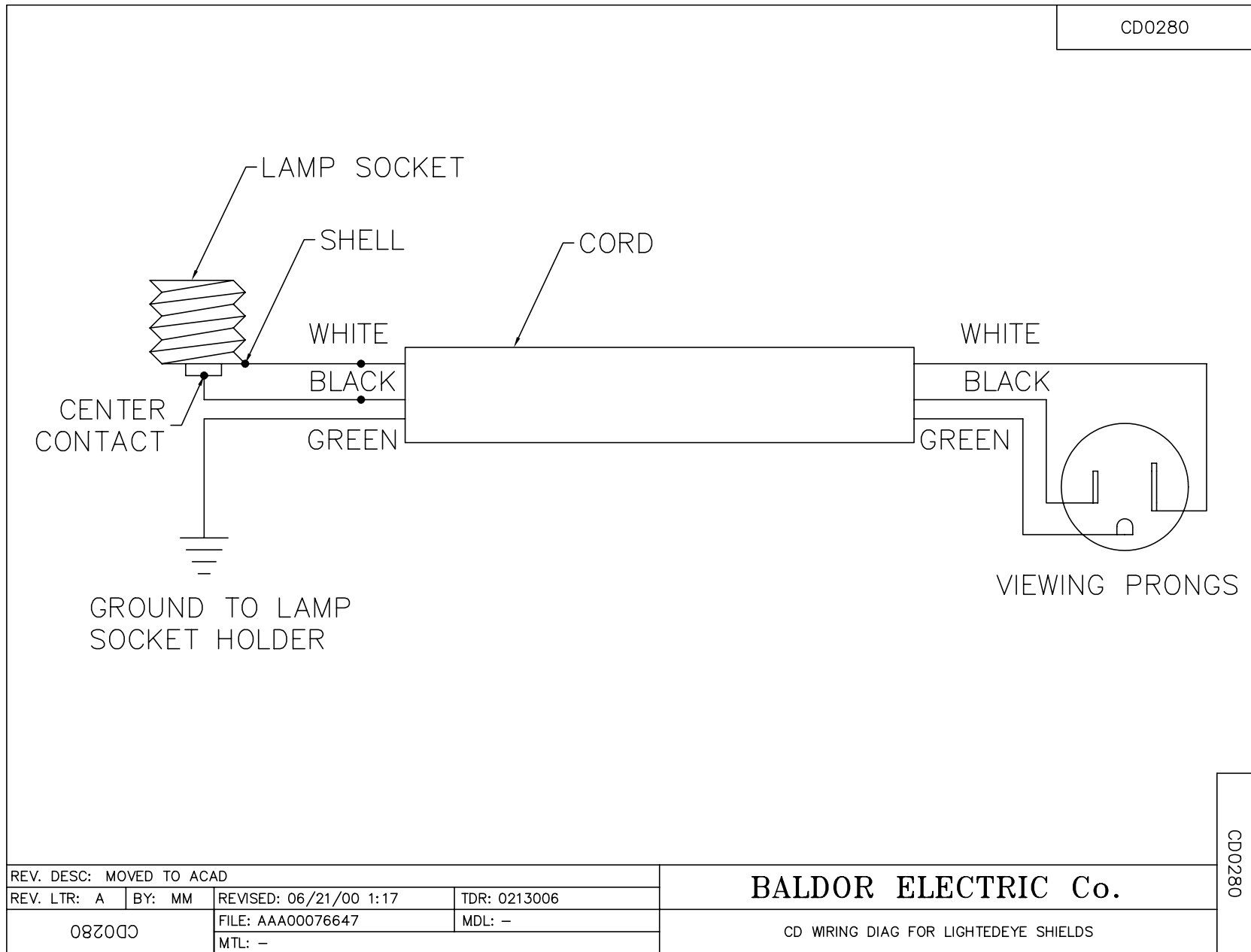
| <b>Accessories</b> |                                       |                   |
|--------------------|---------------------------------------|-------------------|
| <b>Part Number</b> | <b>Description</b>                    | <b>Multiplier</b> |
| GA20               | PEDESTAL INDUSTRIAL, CAST IRON 8"-14" | A8                |
| GA9                | PAIR LIGHTED EYESHIELDS               | A8                |
| GA9-1              | SINGLE LIGHTED EYESHIELD              | A8                |
| GA9S               | PAIR EYESHIELDS W/ ON-OFF SWITCH      | A8                |
| GA11               | PAIR EYESHIELDS                       | A8                |
| B125               | 12" 30 GRIT GRINDING WHEEL            | A8                |
| B126               | 12" 46 GRIT GRINDING WHEEL            | A8                |
| DC12               | DUST CONTROL UNIT                     | A8                |
| DC12-3             | DUST CONTROL UNIT                     | A8                |



No performance data has been  
assigned to this product.







|                          |        |                        |              |
|--------------------------|--------|------------------------|--------------|
| REV. DESC: MOVED TO ACAD |        |                        |              |
| REV. LTR: A              | BY: MM | REVISED: 06/21/00 1:17 | TDR: 0213006 |
| 08200                    |        | FILE: AAA00076647      | MDL: -       |
|                          |        | MTL: -                 |              |

**BALDOR ELECTRIC Co.**

CD WRING DIAG FOR LIGHTEYED SHIELDS

CD0280