

BALDOR® • RELIANCE 

Product Information Packet

1216W

3HP, 1500/1800RPM, 3PH, 50/60HZ, 3628M, GRND

Part Detail							
Revision:	U	Status:	PRD/A	Change #:		Proprietary:	No
Type:	AC	Elec. Spec:	G2WG0004	CD Diagram:	CD0251	Mfg Plant:	
Mech. Spec:	G12-118	Layout:	G2LY0118	Poles:	04	Created Date:	
Base:	RG	Eff. Date:	12-15-2021	Leads:	9#16 12"FRM STAT IRN		Y

Specs			
Nameplate Output:	3		

Nameplate NP3412L

CAT.NO.	1216W		
HP	3	VOLTS	208-230/460
PHASE	3	AMPS	8-7.4/3.7
HZ	50//60	RPM	1500//1800
SER.NO			
SPEC.	G12-118C-0004		
BLANK			

Parts List		
Part Number	Description	Quantity
SA051564	SA G12-118C-0004	1.000 EA
RA046411	RA G12-118C-0004	1.000 EA
G2BA1000A02	BASE, MACH	1.000 EA
10XN4414A20	7/16-14 X 1-1/4 HEX HD CAP SCREW	2.000 EA
HW1001A44	WASHER,7/16 SPLT LK, ZN	2.000 EA
HW1000A45X	7/16 USS FLAT WASHER X	2.000 EA
LD5000A01	LEAD ASSY, ML1400DF14 7" RING TRM EA END	1.000 EA
52XF1032G04	S0-32 X 1/4, HX HD SR SL	1.000 EA
G4GS5000	G14-23 GASKET X	1.000 EA
HA6766A03	BRACKET FOR 'GE' MANUAL STARTERS	1.000 EA
19XB2514A20	1/4-14X1-1/4 HX WS, TY B	2.000 EA
HW1001A25	LOCKWASHER 1/4, ZINC PLT .493 OD, .255 I	2.000 EA
HA2025A01	LEAD BUSHING	1.000 EA
RM1006A01	GROMMET,#2196:.75ID,.9375GROOVE DIA,.062	1.000 EA
52XN1032A04	10-32X1/4 HX HD SLTD SER X	3.000 EA
51XW1032A08	10/32X1/2 HXWSHR HD, SL, SERATED	1.000 EA
XY1032A02	10-32 HEX NUT DIRECTIONAL SERRATION	2.000 EA
36CB4516	750LIPPED CB LID - GALVANNEAL	1.000 EA
37GS1001	GASKET, CONDUIT BOX LID, .06 THICK LEXID	1.000 EA
51XW0832A07	8-32 X .44, TAPTITE II, HEX WSHR SLTD SE	4.000 EA
G2EP1900A01	ENDPLATE, MACH	2.000 EA
HW5100A08	W3118-035 WVY WSHR (WB)	2.000 EA
HA3104A13	THRUBOLT 5/16-18 X 11.750 OHIO ROD	4.000 EA
HW1001A31	LOCKWASHER 5/16, ZINC PLT.591 OD, .319 I	4.000 EA

Parts List (continued)		
Part Number	Description	Quantity
XY3118A12	5/16-18 HEX NUT DIRECTIONAL SERRATION	4.000 EA
G2FH1805A01	L.H. GRINDER GUARD, MACH	1.000 EA
10XN3816A20	3/8-16X1 1/4 HEX HD CAP	4.000 EA
HW1001A38	LOCKWASHER 3/8, ZINC PLT .688 OD, .382 I	4.000 EA
85XU0407S04	4X1/4 U DRIVE PIN STAINLESS	2.000 EA
G2FH1804A01	R.H. GRINDER GUARD, MACH	1.000 EA
10XN3816A20	3/8-16X1 1/4 HEX HD CAP	4.000 EA
HW1001A38	LOCKWASHER 3/8, ZINC PLT .688 OD, .382 I	4.000 EA
G2AP1002A01SP	TOOL REST, MACH (G) MACHINED 6 ON	1.000 EA
HA6049A01SP	SUPPORT, TOOL REST, MACH	1.000 EA
10XN4420A24	7/16-20X1 1/2 HEX HD SCR	3.000 EA
HW1000A44	WASHER, 7/16 FLAT, ZN	3.000 EA
HW1001A44	WASHER,7/16 SPLT LK, ZN	3.000 EA
G2AP1002A01SP	TOOL REST, MACH (G) MACHINED 6 ON	1.000 EA
HA6049A01SP	SUPPORT, TOOL REST, MACH	1.000 EA
10XN4420A24	7/16-20X1 1/2 HEX HD SCR	3.000 EA
HW1000A44	WASHER, 7/16 FLAT, ZN	3.000 EA
HW1001A44	WASHER,7/16 SPLT LK, ZN	3.000 EA
G2FH1807A01	L.H. GRINDER GUARD COVER, MACH	1.000 EA
10XN3816A20	3/8-16X1 1/4 HEX HD CAP	4.000 EA
HW1001A38	LOCKWASHER 3/8, ZINC PLT .688 OD, .382 I	4.000 EA
G2FH1806A01	R.H. GRINDER GUARD COVER, MACH	1.000 EA
10XN3816A20	3/8-16X1 1/4 HEX HD CAP	4.000 EA
HW1001A38	LOCKWASHER 3/8, ZINC PLT .688 OD, .382 I	4.000 EA

Product Information Packet: 1216W - 3HP,1500/1800RPM,3PH,50/60HZ,3628M,GRND

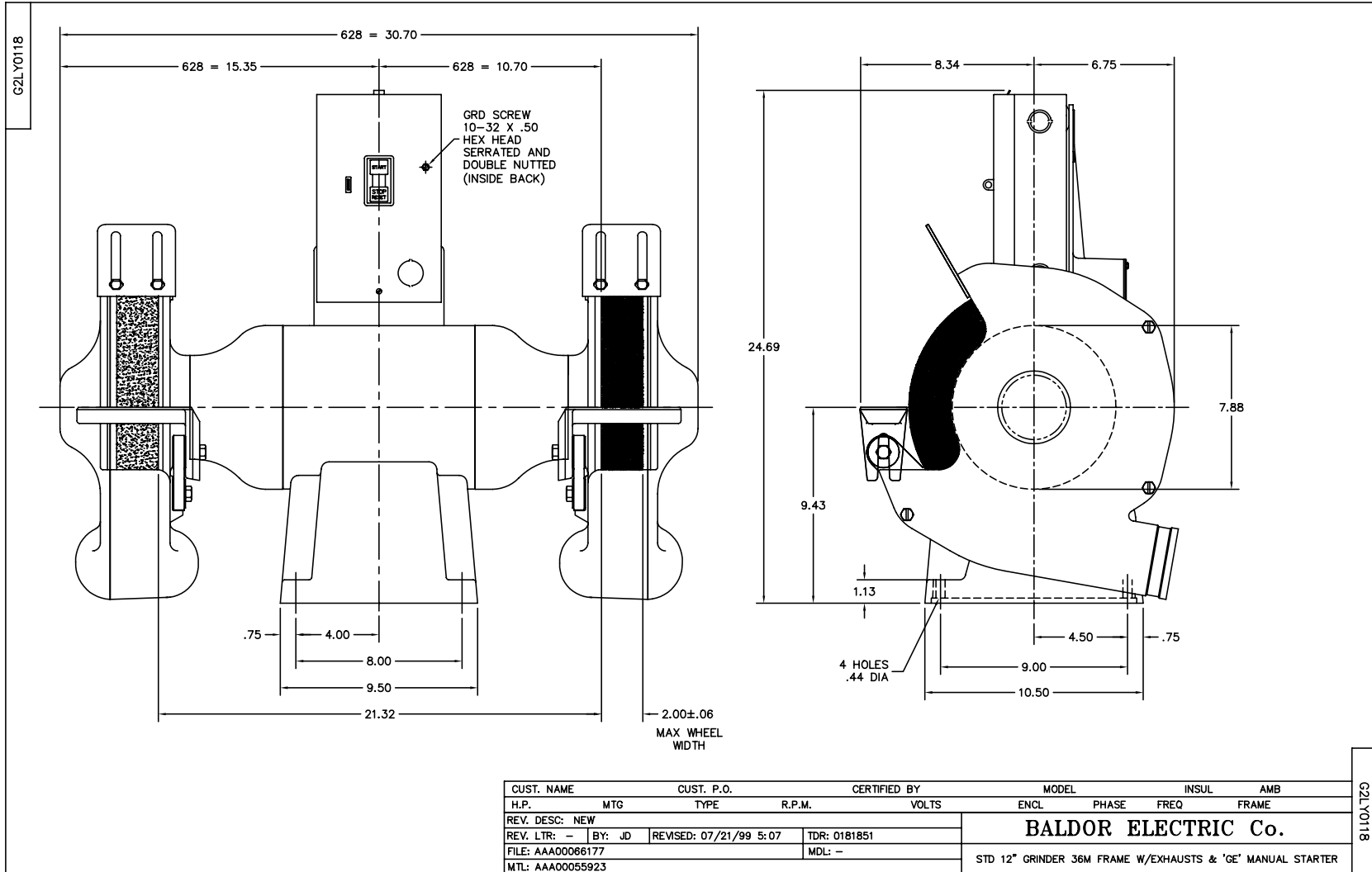
HA6051	FLANGE, WHEEL, CAST	4.000 EA
HW3022J06	1/4X.625 ROLLED SPR PIN	2.000 EA
XZ2007A62SP	1 1/4-7 NUT LH HEX (NC)	1.000 EA
XZ2007A12SP	1 1/4-7 NUT RH HX(NC)(F/S	1.000 EA
G2AP1001ZP	SPARK BREAKER FOR 12" GRINDER GUARD	1.000 EA
10XN3816A16	3/8-16 X 1 HEX HD CAP SCREW	2.000 EA
HW1000A38	WASHER, 3/8" FLAT, SAE Z/P	2.000 EA
HW1001A38	LOCKWASHER 3/8, ZINC PLT .688 OD, .382 I	2.000 EA
G2AP1001ZP	SPARK BREAKER FOR 12" GRINDER GUARD	1.000 EA
10XN3816A16	3/8-16 X 1 HEX HD CAP SCREW	2.000 EA
HW1000A38	WASHER, 3/8" FLAT, SAE Z/P	2.000 EA
HW1001A38	LOCKWASHER 3/8, ZINC PLT .688 OD, .382 I	2.000 EA
MJ1000A02	GREASE, MOBIL POLYREX EM - 124047	0.050 LB
HA1000A45	DR11501.020 BRG GRD,B-N	1.000 EA
GA9	EYESHIELD ASSY	1.000 EA
HA6103A01	SUPPORT ARM, EYESHIELD (PLATED)	2.000 EA
10XN3118A16	5/16-18X1 HEX HD CAP	2.000 EA
HW1001A31	LOCKWASHER 5/16, ZINC PLT.591 OD, .319 I	2.000 EA
HA6094A01SP	CLAMP FOR SUPPORT ARM X PLATED	2.000 EA
WD4102A01	SR-6L-1 HEYCO STRN RELIEF OR 23MPO6L10 M	2.000 EA
MG1000G01	MUNSELL 5.93PB 3.81/ 2.71	0.017 GA
LB1389A03	CONSOLIDATED GRINDER LABEL - 9",10",12"	1.000 EA
LB1112	LABEL GRDR STARTER BOX GR	1.000 EA
LB5008	TAG, CONNECTION PRINT SHOP	1.000 EA
MN909	EYESHIELD MTG INSTR. FOR GA9, GA10 & GA1	1.000 EA
CN1900A01	MAN. STARTER 'GE' NO. CR1062R3AAP2000, 3	1.000 EA

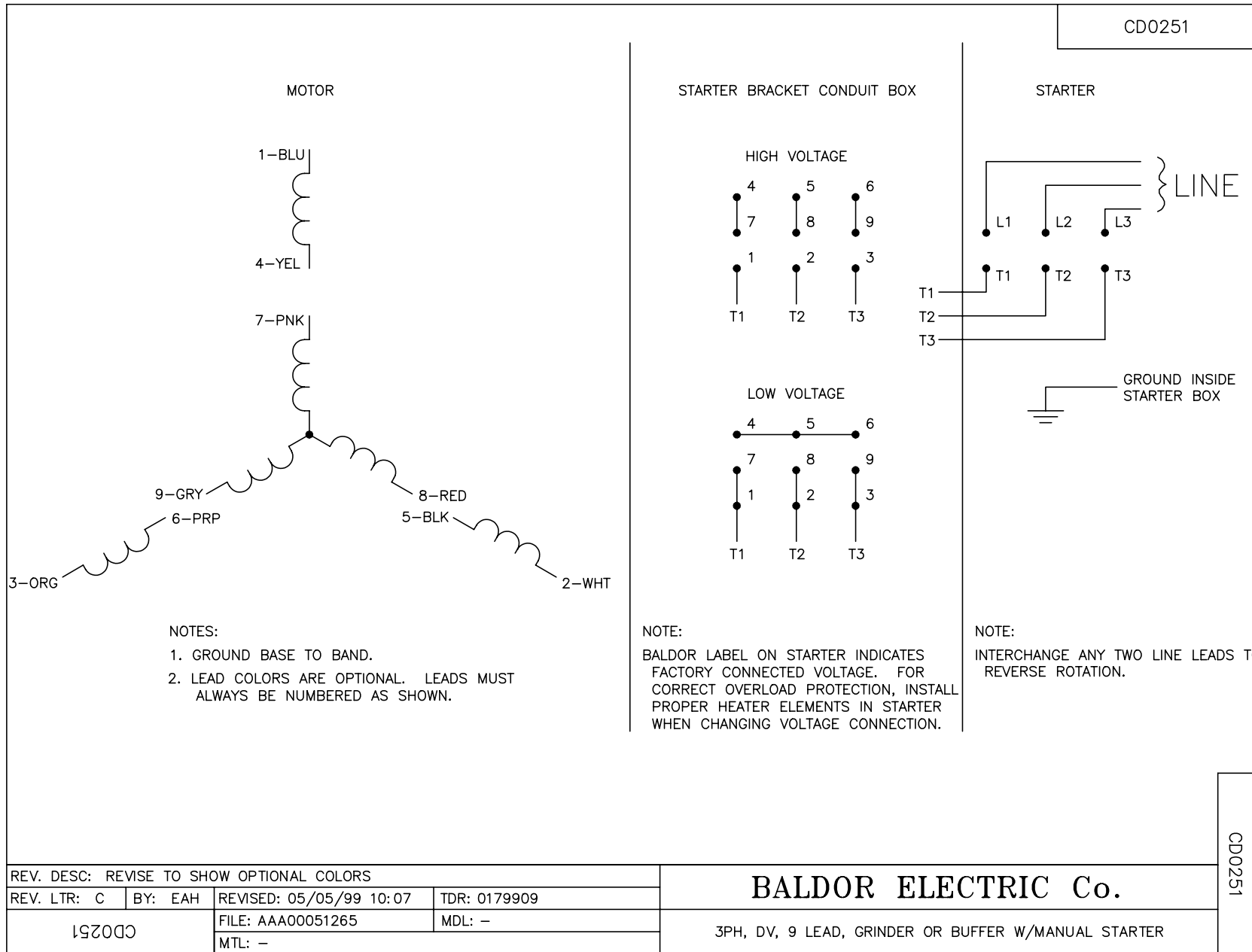
Product Information Packet: 1216W - 3HP,1500/1800RPM,3PH,50/60HZ,3628M,GRND

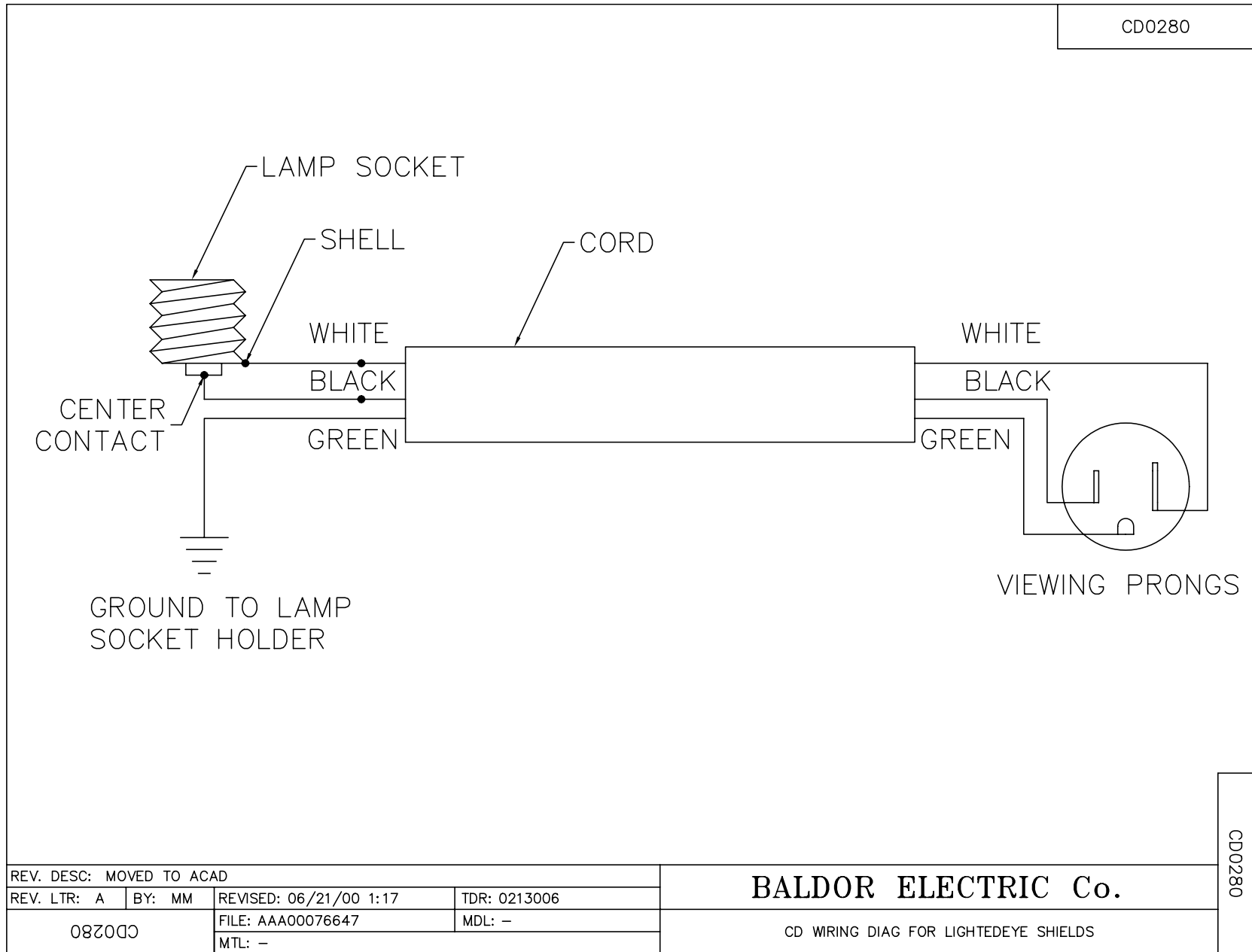
CN2006867A	HEATER, 'GE' NO. CR123C867A (FOR 'GE' ST	3.000 EA
LB1119N	WARNING LABEL	1.000 EA
NP3412L	ALUM NP FOR 8" UTILITY GRINDERS-BUFFERS	1.000 EA
G4PA1000	PACKAGING GROUP	1.000 EA
MN903	INSTR MANUAL FOR GRINDERS 9/03	1.000 EA
LB1618	PROPOSITION 65 WARNING LABEL 1-1/2 X 1/2	1.000 EA

Accessories		
Part Number	Description	Multiplier
GA20	PEDESTAL INDUSTRIAL, CAST IRON 8"-14"	A8
GA9	PAIR LIGHTED EYESHIELDS	A8
GA9-1	SINGLE LIGHTED EYESHIELD	A8
GA9S	PAIR EYESHIELDS W/ ON-OFF SWITCH	A8
GA11	PAIR EYESHIELDS	A8
B125	12" 30 GRIT GRINDING WHEEL	A8
B126	12" 46 GRIT GRINDING WHEEL	A8
DC12	DUST CONTROL UNIT	A8
DC12-3	DUST CONTROL UNIT	A8

No performance data has been
assigned to this product.







REV. DESC: MOVED TO ACAD			
REV. LTR: A	BY: MM	REVISED: 06/21/00 1:17	TDR: 0213006
08200		FILE: AAA00076647	MDL: -
		MTL: -	

BALDOR ELECTRIC Co.

CD WRING DIAG FOR LIGHTEYE SHIELDS

CD0280