

BALDOR® • RELIANCE 

Product Information Packet

1217W

2HP, 1800RPM, 1PH, 60HZ, 3634L, GRND

Part Detail							
Revision:	X	Status:	PRD/A	Change #:		Proprietary:	No
Type:	AC	Elec. Spec:	G2WG0002	CD Diagram:	CD0253	Mfg Plant:	
Mech. Spec:	G12-119	Layout:	G2LY0119	Poles:	04	Created Date:	
Base:	RG	Eff. Date:	12-15-2021	Leads:	4#16 12" FROM IRON		Y

Specs			
Nameplate Output:	2		

Nameplate NP3361L	
CAT.NO.	1217W
HP	2
PHASE	1
HZ	60
SER.NO	
SPEC.	G12-119B-0002
BLANK	
	VOLTS 115/230
	AMPS 20/10
	RPM 1800

Parts List		
Part Number	Description	Quantity
SA051566	SA G12-119B-0002	1.000 EA
RA046413	RA G12-119B-0002	1.000 EA
RE5019	115V MARS RELAY PT #16036	1.000 EA
EC1645A06SP	ELEC CAP, 645-774 MFD, 125V, 2.06D X 4.	1.000 EA
G2BA1000A01	BASE, MACH	1.000 EA
10XN4414A20	7/16-14 X 1-1/4 HEX HD CAP SCREW	2.000 EA
HW1001A44	WASHER,7/16 SPLT LK, ZN	2.000 EA
HW1000A45X	7/16 USS FLAT WASHER X	2.000 EA
HA6003A06	CLAMP, CAPACITOR PLATED	1.000 EA
52XN1032A06	SCREW, SER HX SLT HD, ZN X	1.000 EA
52XN0632A06	SCREW, SER HX SLT HD, ZN X	2.000 EA
HW1001A06	WASHER, #6 SPLIT LOCK, ZINC	2.000 EA
LD5000A01	LEAD ASSY, ML1400DF14 7" RING TRM EA END	1.000 EA
52XF1032G04	S0-32 X 1/4, HX HD SR SL	2.000 EA
HA6766A03	BRACKET FOR 'GE' MANUAL STARTERS	1.000 EA
19XB2514A20	1/4-14X1-1/4 HX WS, TY B	2.000 EA
HW1001A25	LOCKWASHER 1/4, ZINC PLT .493 OD, .255 I	2.000 EA
HA2025A01	LEAD BUSHING	1.000 EA
RM1006A01	GROMMET,#2196:.75ID,.9375GROOVE DIA,.062	1.000 EA
52XN1032A04	10-32X1/4 HX HD SLTD SER X	3.000 EA
51XW1032A08	10/32X1/2 HXWSHR HD, SL, SERATED	1.000 EA
XY1032A02	10-32 HEX NUT DIRECTIONAL SERRATION	2.000 EA
G2CB4500	BASE COVER PLATE, 36L - 12 GRINDER (PLA	1.000 EA
52XF1032A06	10-32X3/8 HX SLTD SER TYFESKAY	4.000 EA

Parts List (continued)		
Part Number	Description	Quantity
36CB4516	750LIPPED CB LID - GALVANNEAL	1.000 EA
37GS1001	GASKET, CONDUIT BOX LID, .06 THICK LEXID	1.000 EA
51XW0832A07	8-32 X .44, TAPTITE II, HEX WSHR SLTD SE	4.000 EA
G2EP1900A01	ENDPLATE, MACH	2.000 EA
HW5100A08	W3118-035 WVY WSHR (WB)	2.000 EA
HA3104A13	THRUBOLT 5/16-18 X 11.750 OHIO ROD	4.000 EA
HW1001A31	LOCKWASHER 5/16, ZINC PLT.591 OD, .319 I	4.000 EA
XY3118A12	5/16-18 HEX NUT DIRECTIONAL SERRATION	4.000 EA
G2FH1805A01	L.H. GRINDER GUARD, MACH	1.000 EA
10XN3816A20	3/8-16X1 1/4 HEX HD CAP	4.000 EA
HW1001A38	LOCKWASHER 3/8, ZINC PLT .688 OD, .382 I	4.000 EA
85XU0407S04	4X1/4 U DRIVE PIN STAINLESS	2.000 EA
G2FH1804A01	R.H. GRINDER GUARD, MACH	1.000 EA
10XN3816A20	3/8-16X1 1/4 HEX HD CAP	4.000 EA
HW1001A38	LOCKWASHER 3/8, ZINC PLT .688 OD, .382 I	4.000 EA
G2AP1002A01SP	TOOL REST, MACH (G) MACHINED 6 ON	1.000 EA
HA6049A01SP	SUPPORT, TOOL REST, MACH	1.000 EA
10XN4420A24	7/16-20X1 1/2 HEX HD SCR	3.000 EA
HW1000A44	WASHER, 7/16 FLAT, ZN	3.000 EA
HW1001A44	WASHER,7/16 SPLT LK, ZN	3.000 EA
G2AP1002A01SP	TOOL REST, MACH (G) MACHINED 6 ON	1.000 EA
HA6049A01SP	SUPPORT, TOOL REST, MACH	1.000 EA
10XN4420A24	7/16-20X1 1/2 HEX HD SCR	3.000 EA
HW1000A44	WASHER, 7/16 FLAT, ZN	3.000 EA

Product Information Packet: 1217W - 2HP,1800RPM,1PH,60HZ,3634L,GRND

HW1001A44	WASHER,7/16 SPLT LK, ZN	3.000 EA
G2FH1807A01	L.H. GRINDER GUARD COVER, MACH	1.000 EA
10XN3816A20	3/8-16X1 1/4 HEX HD CAP	4.000 EA
HW1001A38	LOCKWASHER 3/8, ZINC PLT .688 OD, .382 I	4.000 EA
G2FH1806A01	R.H. GRINDER GUARD COVER, MACH	1.000 EA
10XN3816A20	3/8-16X1 1/4 HEX HD CAP	4.000 EA
HW1001A38	LOCKWASHER 3/8, ZINC PLT .688 OD, .382 I	4.000 EA
HA6051	FLANGE, WHEEL, CAST	4.000 EA
HW3022J06	1/4X.625 ROLLED SPR PIN	2.000 EA
XZ2007A62SP	1 1/4-7 NUT LH HEX (NC)	1.000 EA
XZ2007A12SP	1 1/4-7 NUT RH HX(NC)(F/S	1.000 EA
G2AP1001ZP	SPARK BREAKER FOR 12" GRINDER GUARD	1.000 EA
10XN3816A16	3/8-16 X 1 HEX HD CAP SCREW	2.000 EA
HW1000A38	WASHER, 3/8" FLAT, SAE Z/P	2.000 EA
HW1001A38	LOCKWASHER 3/8, ZINC PLT .688 OD, .382 I	2.000 EA
G2AP1001ZP	SPARK BREAKER FOR 12" GRINDER GUARD	1.000 EA
10XN3816A16	3/8-16 X 1 HEX HD CAP SCREW	2.000 EA
HW1000A38	WASHER, 3/8" FLAT, SAE Z/P	2.000 EA
HW1001A38	LOCKWASHER 3/8, ZINC PLT .688 OD, .382 I	2.000 EA
G4GS5000	G14-23 GASKET X	1.000 EA
MJ1000A02	GREASE, MOBIL POLYREX EM - 124047	0.050 LB
HA1000A45	DR11501.020 BRG GRD,B-N	1.000 EA
GA9	EYESHIELD ASSY	1.000 EA
MG1000G01	MUNSELL 5.93PB 3.81/ 2.71	0.017 GA
LB1389A03	CONSOLIDATED GRINDER LABEL - 9",10",12"	1.000 EA
LB1112	LABEL GRDR STARTER BOX GR	1.000 EA

Product Information Packet: 1217W - 2HP,1800RPM,1PH,60HZ,3634L,GRND

LB5024	TAG, CAUTION PRINT SHOP	1.000 EA
MN909	EYESHIELD MTG INSTR. FOR GA9, GA10 & GA1	1.000 EA
WD1000A15	3-520132-2 AMP FLAG (4M/RL NON-CANC/NON-	3.000 EA
CN1900A02	MAN. STARTER 'GE' NO. CR1062S3AAP2000, 3	1.000 EA
CN2006125B	HEATER, 'GE' NO. CR123C125B (FOR 'GE' ST	3.000 EA
LB1119N	WARNING LABEL	1.000 EA
NP3361L	ALUM NP FOR 8" UTILITY GRINDERS-BUFFERS	1.000 EA
G4PA1000	PACKAGING GROUP	1.000 EA
MN903	INSTR MANUAL FOR GRINDERS 9/03	1.000 EA
LB1618	PROPOSITION 65 WARNING LABEL 1-1/2 X 1/2	1.000 EA

Accessories		
Part Number	Description	Multiplier
GA20	PEDESTAL INDUSTRIAL, CAST IRON 8"-14"	A8
GA9	PAIR LIGHTED EYESHIELDS	A8
GA9-1	SINGLE LIGHTED EYESHIELD	A8
GA9S	PAIR EYESHIELDS W/ ON-OFF SWITCH	A8
GA11	PAIR EYESHIELDS	A8
B125	12" 30 GRIT GRINDING WHEEL	A8
B126	12" 46 GRIT GRINDING WHEEL	A8
BQ1-015-CC	1PH Brake, NEMA 1,110-125 VAC, 50/60Hz	P1
BQ1-015-CP	1PH Brake, Panel 110-125 VAC, 50/60 Hz	P1
BQ2-015-CC	1PH Brake,NEMA 1 208-230 VAC,50/60Hz	P1
BQ2-015-CP	1PH Brake, Panel 208-230 VAC, 50/60 Hz	
DC12	DUST CONTROL UNIT	A8

AC Induction Motor Performance Data

Record # 21971

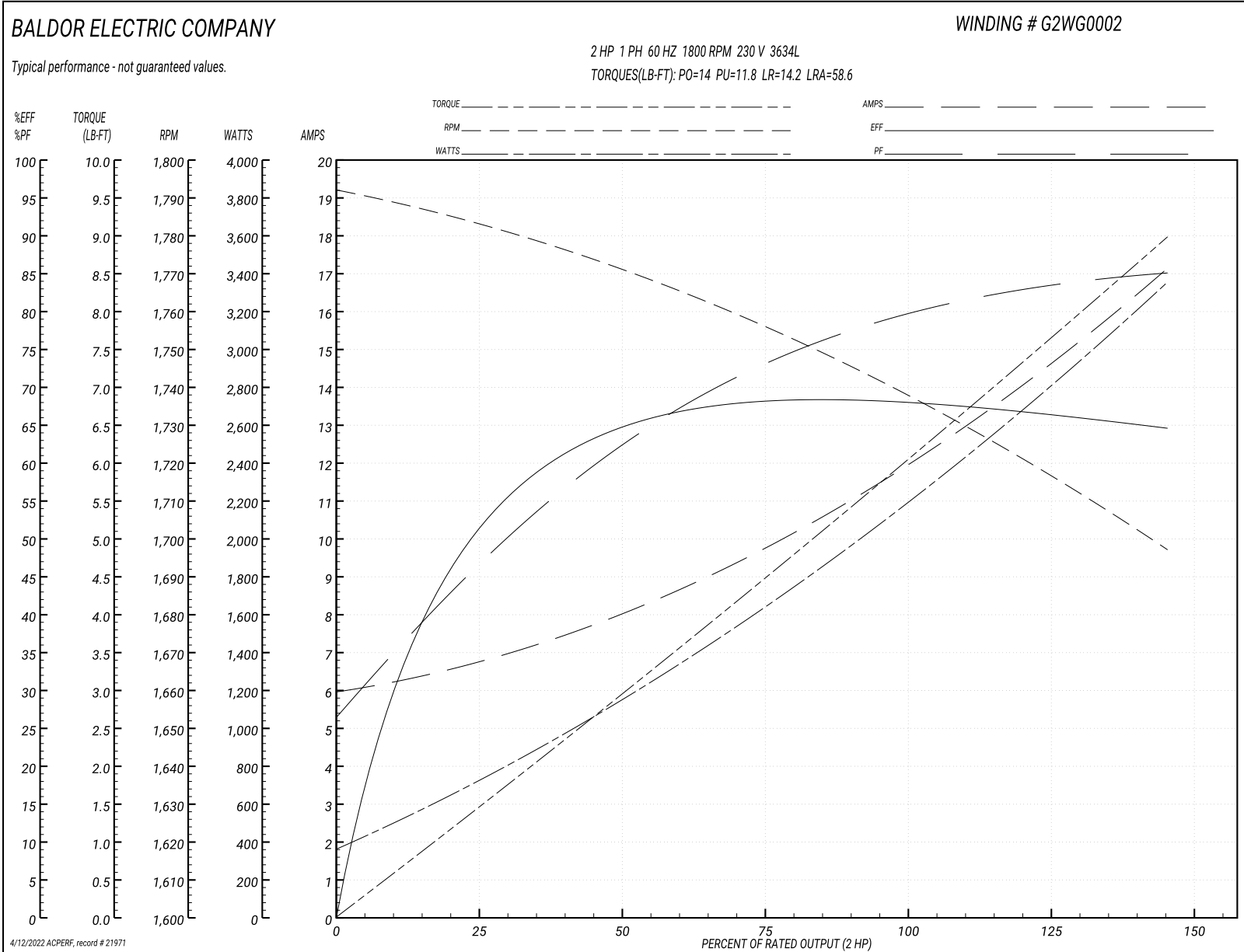
Typical performance - not guaranteed values

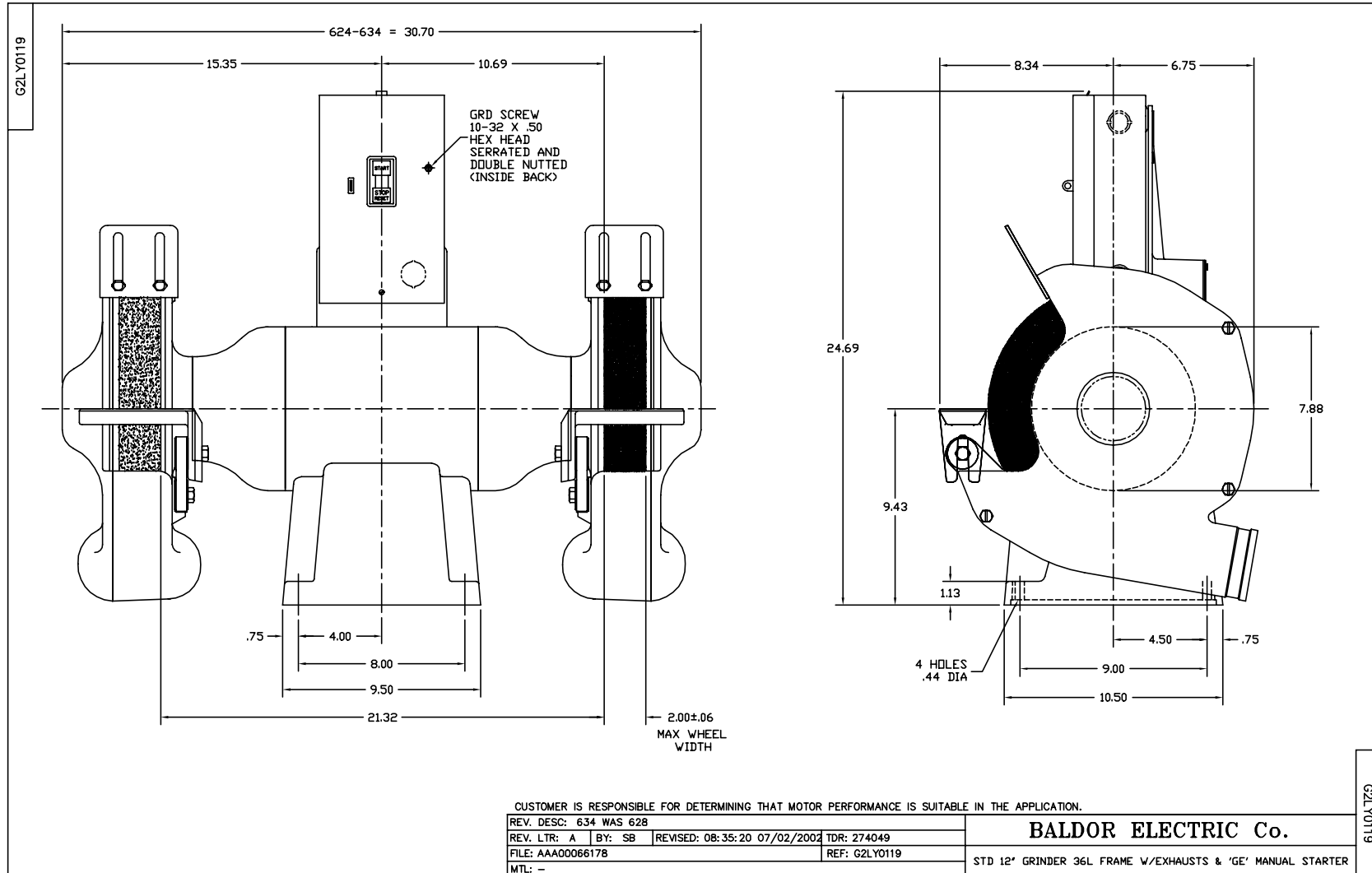
Winding: G2WG0002-R001		Type: 3634L		Enclosure: TENV	
Nameplate Data			230 V, 60 Hz: High Voltage Connection		
Rated Output (HP)	2	Full Load Torque	6 LB-FT		
Volts	115/230	Start Configuration	direct on line		
Full Load Amps	20/10	Breakdown Torque	14 LB-FT		
R.P.M.	1800	Pull-up Torque	11.8 LB-FT		
Hz	60 Phase	1	Locked-rotor Torque	14.2 LB-FT	
NEMA Design Code	-	KVA Code	-	Starting Current	58.6 A
Service Factor (S.F.)	1	No-load Current	6.04 A		
NEMA Nom. Eff.	0	Power Factor	0	Line-line Res. @ 25°C	0.997 Ω A Ph 0.665 Ω B Ph
Rating - Duty	40C AMB-CONT		Temp. Rise @ Rated Load		

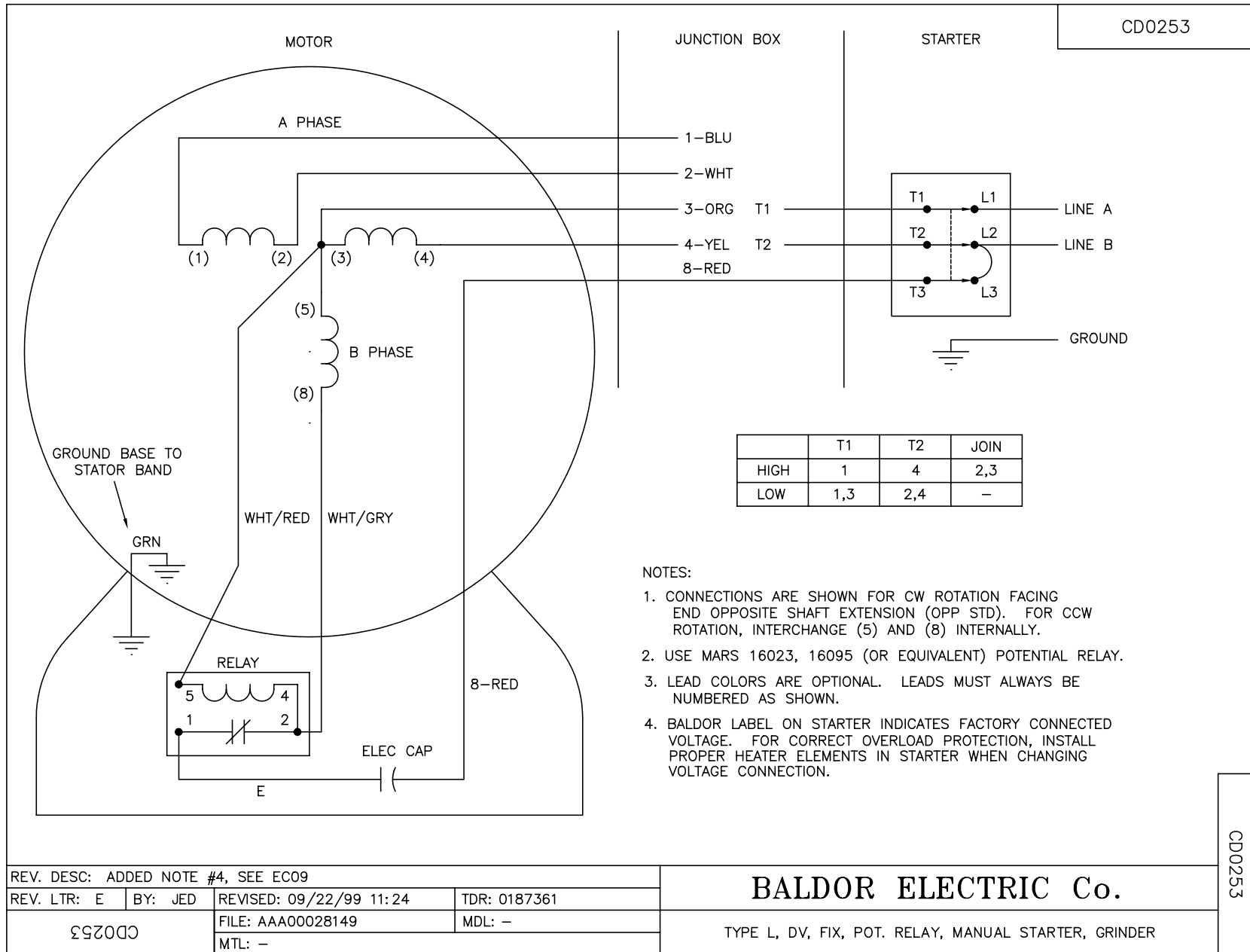
Load Characteristics 230 V, 60 Hz, 2 HP

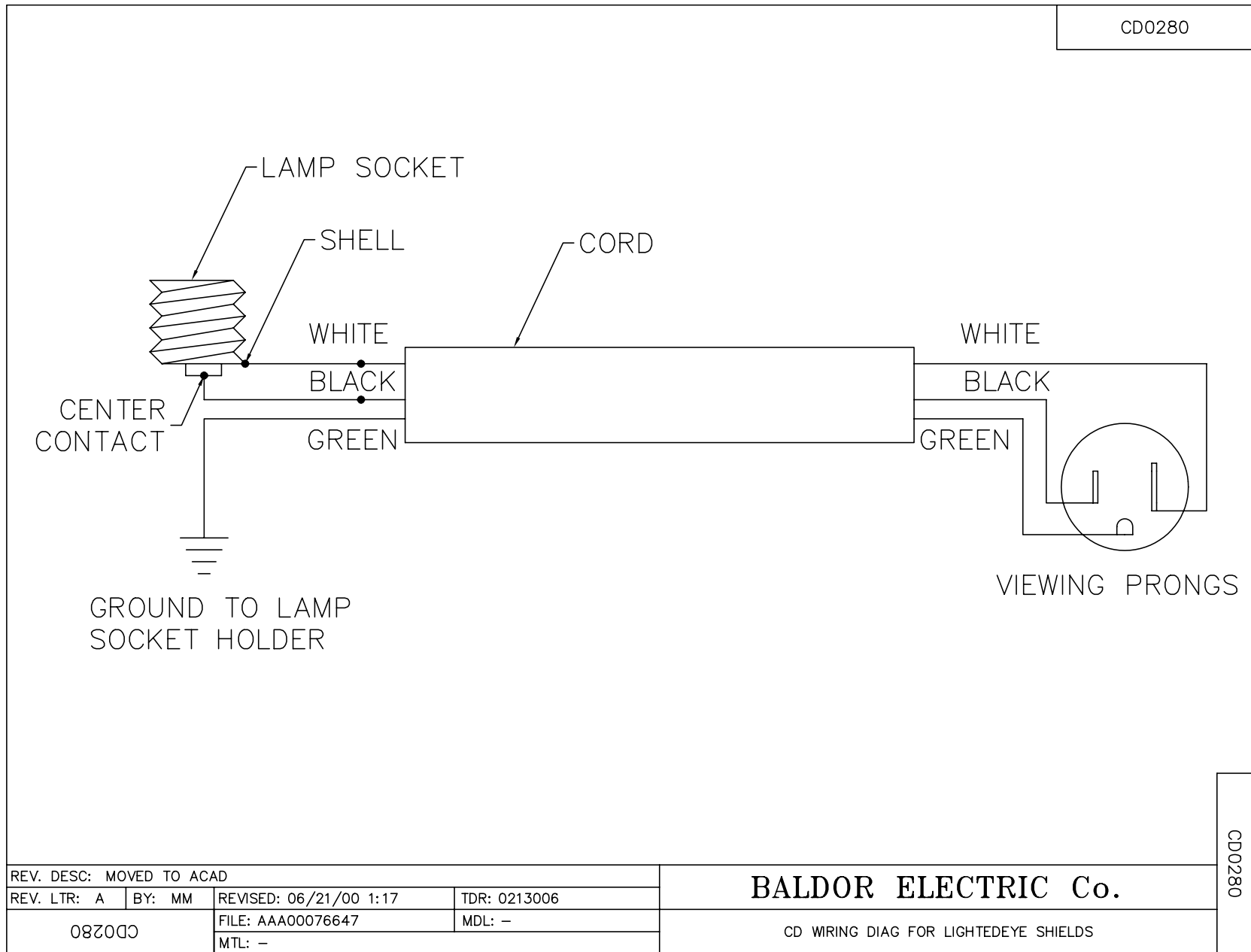
% of Rated Load	25	50	75	100	125	150
Power Factor	49	64	73	79	82	86
Efficiency	50.6	64.5	68.3	68.7	66.4	64.6
Speed	1782	1770	1756	1739	1720	1696
Line amperes	6.7	7.99	9.76	11.9	14.6	17

Performance Graph at 230V, 60Hz, 2.0HP Typical performance - Not guaranteed values









REV. DESC: MOVED TO ACAD			
REV. LTR: A	BY: MM	REVISED: 06/21/00 1:17	TDR: 0213006
08200		FILE: AAA00076647	MDL: -
		MTL: -	

BALDOR ELECTRIC Co.

CD WRING DIAG FOR LIGHTEYEDYE SHIELDS

CD0280