

BALDOR® • RELIANCE 

Product Information Packet

1250

2HP, 1800RPM, 1PH, 60HZ, 3634L, BUFF

Part Detail							
Revision:	W	Status:	PRD/A	Change #:		Proprietary:	No
Type:	AC	Elec. Spec:	G2WG0002	CD Diagram:	CD0253	Mfg Plant:	
Mech. Spec:	G12-120	Layout:	G2LY0120	Poles:	04	Created Date:	
Base:	RG	Eff. Date:	12-15-2021	Leads:	4#16 12" FROM IRON		Y

Specs			
Nameplate Output:	2		

Nameplate NP3352L

CAT.NO. 1250

HP 2

PHASE 1

HZ 60

SER.NO

SPEC. G12-120A-0002

BLANK

VOLTS 115/230

AMPS 20/10

RPM 1800

Parts List		
Part Number	Description	Quantity
SA051567	SA G12-120A-0002	1.000 EA
RA046414	RA G12-120A-0002	1.000 EA
RE5019	115V MARS RELAY PT #16036	1.000 EA
EC1645A06SP	ELEC CAP, 645-774 MFD, 125V, 2.06D X 4.	1.000 EA
G2BA1000A01	BASE, MACH	1.000 EA
10XN4414A20	7/16-14 X 1-1/4 HEX HD CAP SCREW	2.000 EA
HW1001A44	WASHER,7/16 SPLT LK, ZN	2.000 EA
HW1000A45X	7/16 USS FLAT WASHER X	2.000 EA
HA6003A06	CLAMP, CAPACITOR PLATED	1.000 EA
52XN1032A06	SCREW, SER HX SLT HD, ZN X	1.000 EA
52XN0632A06	SCREW, SER HX SLT HD, ZN X	2.000 EA
HW1001A06	WASHER, #6 SPLIT LOCK, ZINC	2.000 EA
LD5000A01	LEAD ASSY, ML1400DF14 7" RING TRM EA END	1.000 EA
52XF1032G04	S0-32 X 1/4, HX HD SR SL	2.000 EA
HA6766A03	BRACKET FOR 'GE' MANUAL STARTERS	1.000 EA
19XB2514A20	1/4-14X1-1/4 HX WS, TY B	2.000 EA
HW1001A25	LOCKWASHER 1/4, ZINC PLT .493 OD, .255 I	2.000 EA
HA2025A01	LEAD BUSHING	1.000 EA
RM1006A01	GROMMET,#2196:.75ID,.9375GROOVE DIA,.062	1.000 EA
52XN1032A04	10-32X1/4 HX HD SLTD SER X	3.000 EA
51XW1032A08	10/32X1/2 HXWSHR HD, SL, SERATED	1.000 EA
XY1032A02	10-32 HEX NUT DIRECTIONAL SERRATION	2.000 EA
G2CB4500	BASE COVER PLATE, 36L - 12 GRINDER (PLA	1.000 EA
52XF1032A06	10-32X3/8 HX SLTD SER TYFESKAY	4.000 EA

Parts List (continued)		
Part Number	Description	Quantity
36CB4516	750LIPPED CB LID - GALVANNEAL	1.000 EA
37GS1001	GASKET, CONDUIT BOX LID, .06 THICK LEXID	1.000 EA
51XW0832A07	8-32 X .44, TAPTITE II, HEX WSHR SLTD SE	4.000 EA
G2EP1900A01	ENDPLATE, MACH	2.000 EA
HW5100A08	W3118-035 WVY WSHR (WB)	2.000 EA
10XN3816A20	3/8-16X1 1/4 HEX HD CAP	8.000 EA
HW1001A38	LOCKWASHER 3/8, ZINC PLT .688 OD, .382 I	8.000 EA
HA3104A13	THRUBOLT 5/16-18 X 11.750 OHIO ROD	4.000 EA
HW1001A31	LOCKWASHER 5/16, ZINC PLT.591 OD, .319 I	4.000 EA
MN906	Baldor Buffer 6/13	1.000 EA
XY3118A12	5/16-18 HEX NUT DIRECTIONAL SERRATION	4.000 EA
HA6051	FLANGE, WHEEL, CAST	4.000 EA
HW3022J06	1/4X.625 ROLLED SPR PIN	2.000 EA
XZ2007A62SP	1 1/4-7 NUT LH HEX (NC)	1.000 EA
XZ2007A12SP	1 1/4-7 NUT RH HX(NC)(F/S)	1.000 EA
RM1010A07	VNYL CAP 1.875-21 701-89 BLACK S/R Q=1	2.000 EA
LB1009N	LABEL,ROTATION DIRECTION (ON ROLLS)	1.000 EA
LB1092	LABEL, WARNING BUFFERS	1.000 EA
LB1112	LABEL GRDR STARTER BOX GR	1.000 EA
LB5024	TAG, CAUTION PRINT SHOP	1.000 EA
85XU0407S04	4X1/4 U DRIVE PIN STAINLESS	2.000 EA
G4GS5000	G14-23 GASKET X	1.000 EA
MJ1000A02	GREASE, MOBIL POLYREX EM - 124047	0.050 LB
HA1000A45	DR11501.020 BRG GRD,B-N	1.000 EA

Product Information Packet: 1250 - 2HP,1800RPM,1PH,60HZ,3634L,BUFF

MG1000G01	MUNSELL 5.93PB 3.81/ 2.71	0.017 GA
WD1000A15	3-520132-2 AMP FLAG (4M/RL NON-CANC/NON-	3.000 EA
CN1900A02	MAN. STARTER 'GE' NO. CR1062S3AAP2000, 3	1.000 EA
CN2006125B	HEATER, 'GE' NO. CR123C125B (FOR 'GE' ST	3.000 EA
LB1119N	WARNING LABEL	1.000 EA
MG2000A02	RUST VETO-377-HF HOUGHTON	0.001 GA
NP3352L	ALUM NAMEPLATE - BALDOR BUFFER NO LOGOS	1.000 EA
G2PA1001	PACKAGING GROUP	1.000 EA
LB1618	PROPOSITION 65 WARNING LABEL 1-1/2 X 1/2	1.000 EA

Accessories		
Part Number	Description	Multiplier
GA20	PEDESTAL INDUSTRIAL, CAST IRON 8"-14"	A8
BQ1-015-CC	1PH Brake, NEMA 1,110-125 VAC, 50/60Hz	P1
BQ1-015-CP	1PH Brake, Panel 110-125 VAC, 50/60 Hz	P1
BQ2-015-CC	1PH Brake,NEMA 1 208-230 VAC,50/60Hz	P1
BQ2-015-CP	1PH Brake, Panel 208-230 VAC, 50/60 Hz	

AC Induction Motor Performance Data

Record # 21971

Typical performance - not guaranteed values

Winding: G2WG0002-R001		Type: 3634L		Enclosure: TENV	
Nameplate Data			230 V, 60 Hz: High Voltage Connection		
Rated Output (HP)	2	Full Load Torque	6 LB-FT		
Volts	115/230	Start Configuration	direct on line		
Full Load Amps	20/10	Breakdown Torque	14 LB-FT		
R.P.M.	1800	Pull-up Torque	11.8 LB-FT		
Hz	60 Phase	Locked-rotor Torque	14.2 LB-FT		
NEMA Design Code	-	Starting Current	58.6 A		
Service Factor (S.F.)	1	No-load Current	6.04 A		
NEMA Nom. Eff.	0	Line-line Res. @ 25°C	0.997 Ω A Ph 0.665 Ω B Ph		
Power Factor	0	Temp. Rise @ Rated Load			
Rating - Duty	40C AMB-CONT				

Load Characteristics 230 V, 60 Hz, 2 HP

% of Rated Load	25	50	75	100	125	150
Power Factor	49	64	73	79	82	86
Efficiency	50.6	64.5	68.3	68.7	66.4	64.6
Speed	1782	1770	1756	1739	1720	1696
Line amperes	6.7	7.99	9.76	11.9	14.6	17

Performance Graph at 230V, 60Hz, 2.0HP Typical performance - Not guaranteed values

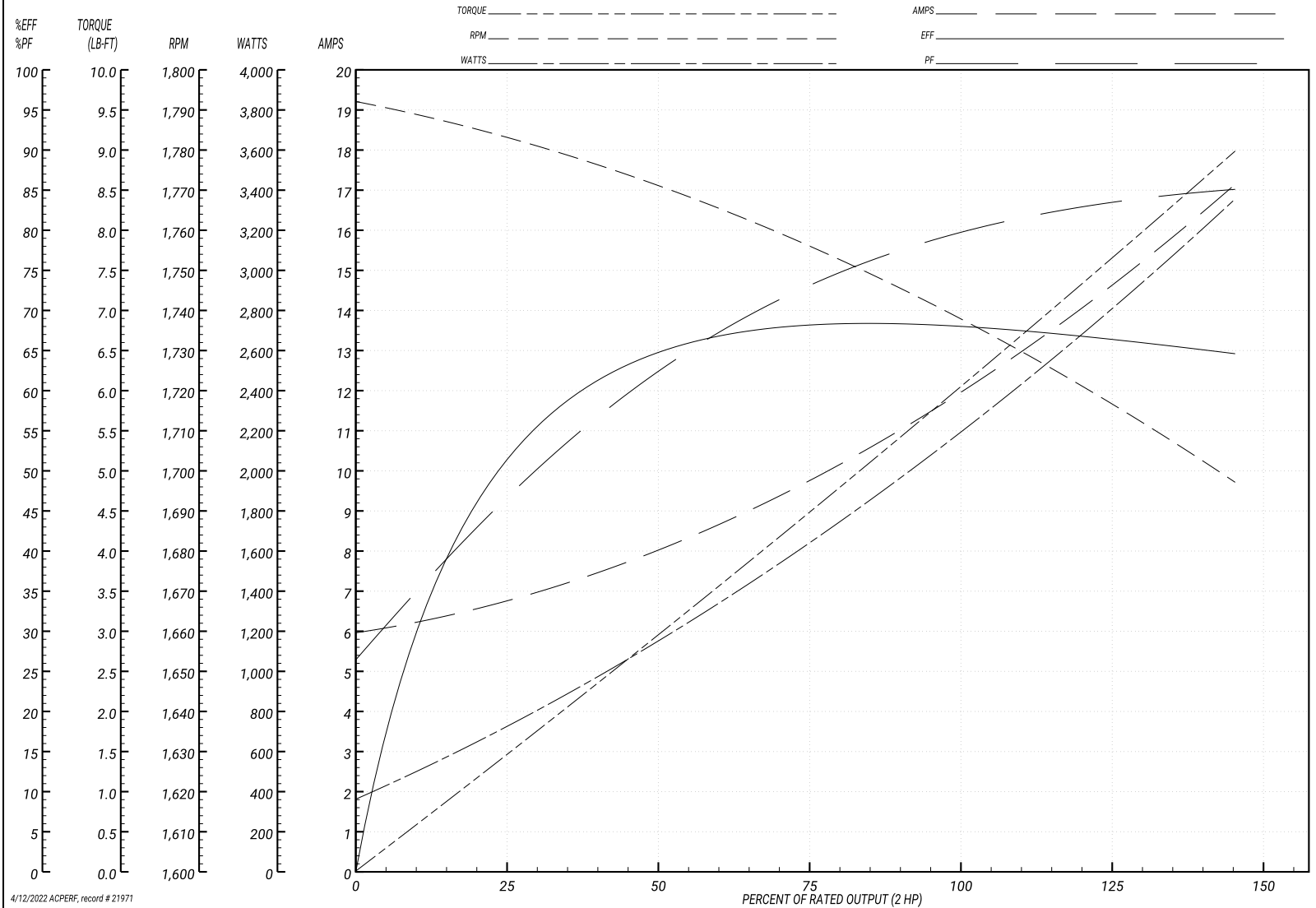
BALDOR ELECTRIC COMPANY

WINDING # G2WG0002

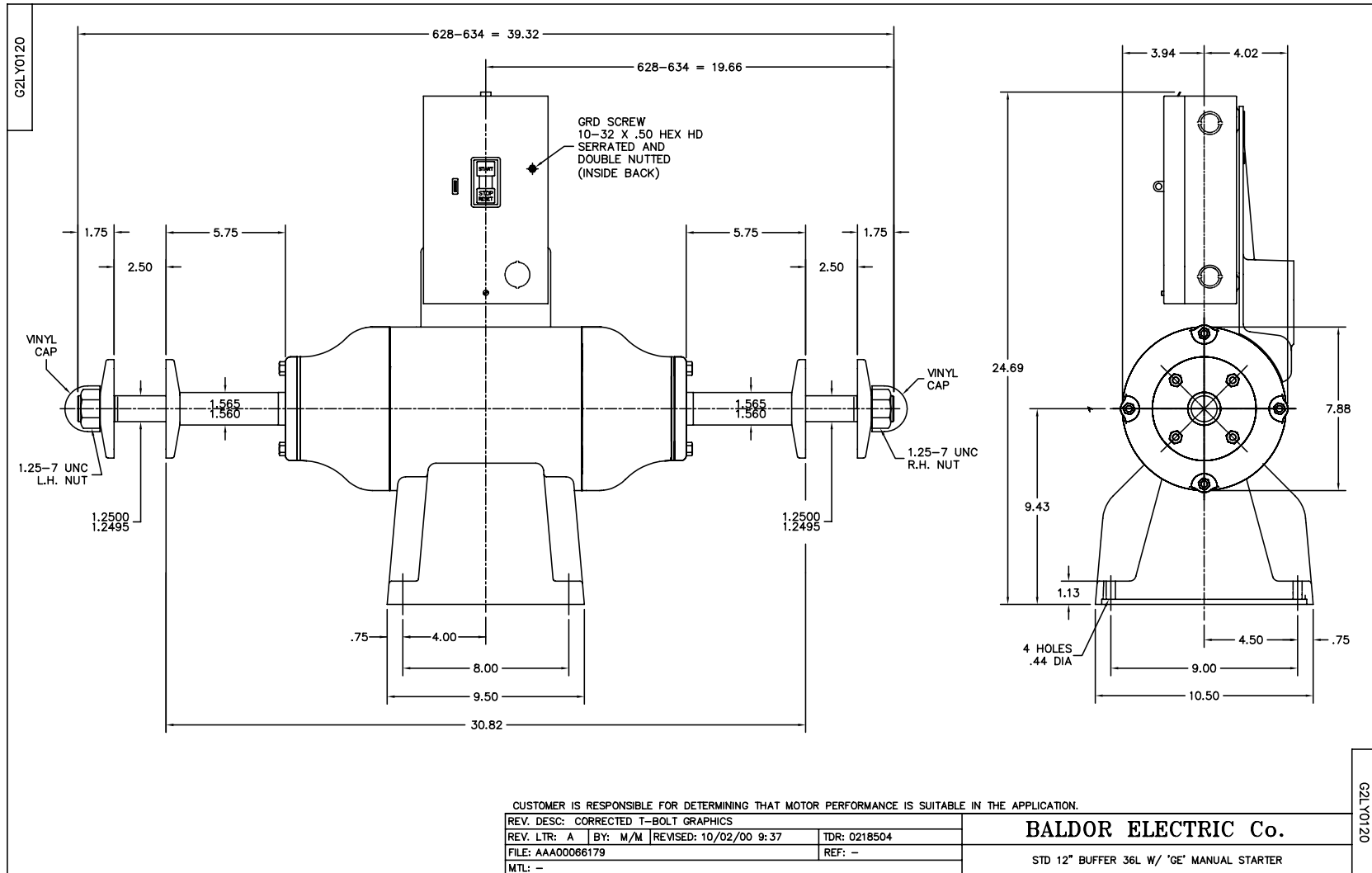
Typical performance - not guaranteed values.

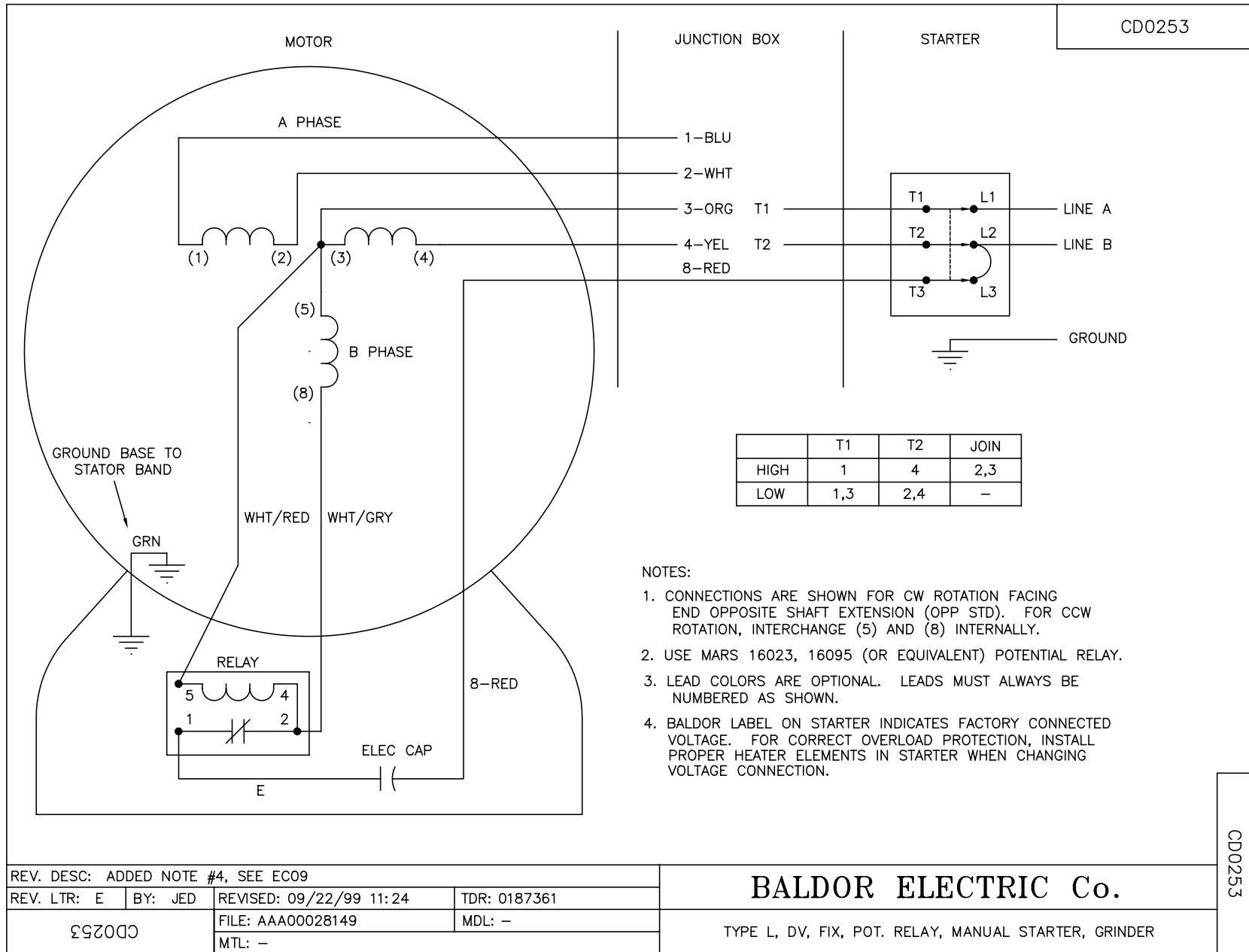
2 HP 1 PH 60 HZ 1800 RPM 230 V 3634L

TORQUES(LB-FT): PO=14 PU=11.8 LR=14.2 LRA=58.6



4/12/2022 ACPERF, record # 21971





REV. DESC: ADDED NOTE #4, SEE EC09			
REV. LTR: E	BY: JED	REVISED: 09/22/99 11:24	TDR: 0187361
ΩΣ20C		FILE: AAA00028149	MDL: -
		MTL: -	

BALDOR ELECTRIC Co.

TYPE L, DV, FIX, POT. RELAY, MANUAL STARTER, GRINDER

CD0253