

BALDOR® • RELIANCE 

Product Information Packet

1251

2HP,3600RPM,1PH,60HZ,3634L,BUFF

| Part Detail | | | | | | | |
|-------------|---------|-------------|------------|-------------|--------------------|---------------|----|
| Revision: | V | Status: | PRD/A | Change #: | | Proprietary: | No |
| Type: | AC | Elec. Spec: | G2WG0113 | CD Diagram: | CD0253 | Mfg Plant: | |
| Mech. Spec: | G12-120 | Layout: | G2LY0120 | Poles: | 02 | Created Date: | |
| Base: | RG | Eff. Date: | 02-11-2022 | Leads: | 4#16 12" FROM IRON | | Y |

| Specs | | | |
|-------------------|---|--|--|
| Nameplate Output: | 2 | | |

Nameplate NP3352L

| | | | |
|---------|---------------|-------|---------|
| CAT.NO. | 1251 | | |
| HP | 2 | VOLTS | 115/230 |
| PHASE | 1 | AMPS | 21/10.5 |
| HZ | 60 | RPM | 3600 |
| SER.NO | | | |
| SPEC. | G12-120B-0113 | | |
| BLANK | | | |

| Parts List | | |
|-------------|--|----------|
| Part Number | Description | Quantity |
| SA087072 | SA G12-120B-0113 | 1.000 EA |
| RA080080 | RA G12-120B-0113 | 1.000 EA |
| RE5019 | 115V MARS RELAY PT #16036 | 1.000 EA |
| EC1645A06SP | ELEC CAP, 645-774 MFD, 125V, 2.06D X 4. | 1.000 EA |
| G2BA1000A01 | BASE, MACH | 1.000 EA |
| 10XN4414A20 | 7/16-14 X 1-1/4 HEX HD CAP SCREW | 2.000 EA |
| HW1001A44 | WASHER,7/16 SPLT LK, ZN | 2.000 EA |
| HW1000A45X | 7/16 USS FLAT WASHER X | 2.000 EA |
| HA6003A06 | CLAMP, CAPACITOR PLATED | 1.000 EA |
| 52XN1032A06 | SCREW, SER HX SLT HD, ZN X | 1.000 EA |
| 52XN0632A06 | SCREW, SER HX SLT HD, ZN X | 2.000 EA |
| HW1001A06 | WASHER, #6 SPLIT LOCK, ZINC | 2.000 EA |
| LD5000A01 | LEAD ASSY, ML1400DF14 7" RING TRM EA END | 1.000 EA |
| 52XF1032G04 | S0-32 X 1/4, HX HD SR SL | 2.000 EA |
| HA6766A03 | BRACKET FOR 'GE' MANUAL STARTERS | 1.000 EA |
| 19XB2514A20 | 1/4-14X1-1/4 HX WS, TY B | 2.000 EA |
| HW1001A25 | LOCKWASHER 1/4, ZINC PLT .493 OD, .255 I | 2.000 EA |
| HA2025A01 | LEAD BUSHING | 1.000 EA |
| RM1006A01 | GROMMET,#2196:.75ID,.9375GROOVE DIA,.062 | 1.000 EA |
| 52XN1032A04 | 10-32X1/4 HX HD SLTD SER X | 3.000 EA |
| 51XW1032A08 | 10/32X1/2 HXWSHR HD, SL, SERATED | 1.000 EA |
| XY1032A02 | 10-32 HEX NUT DIRECTIONAL SERRATION | 2.000 EA |
| G2CB4500 | BASE COVER PLATE, 36L - 12 GRINDER (PLA | 1.000 EA |
| 52XF1032A06 | 10-32X3/8 HX SLTD SER TYFESKAY | 4.000 EA |

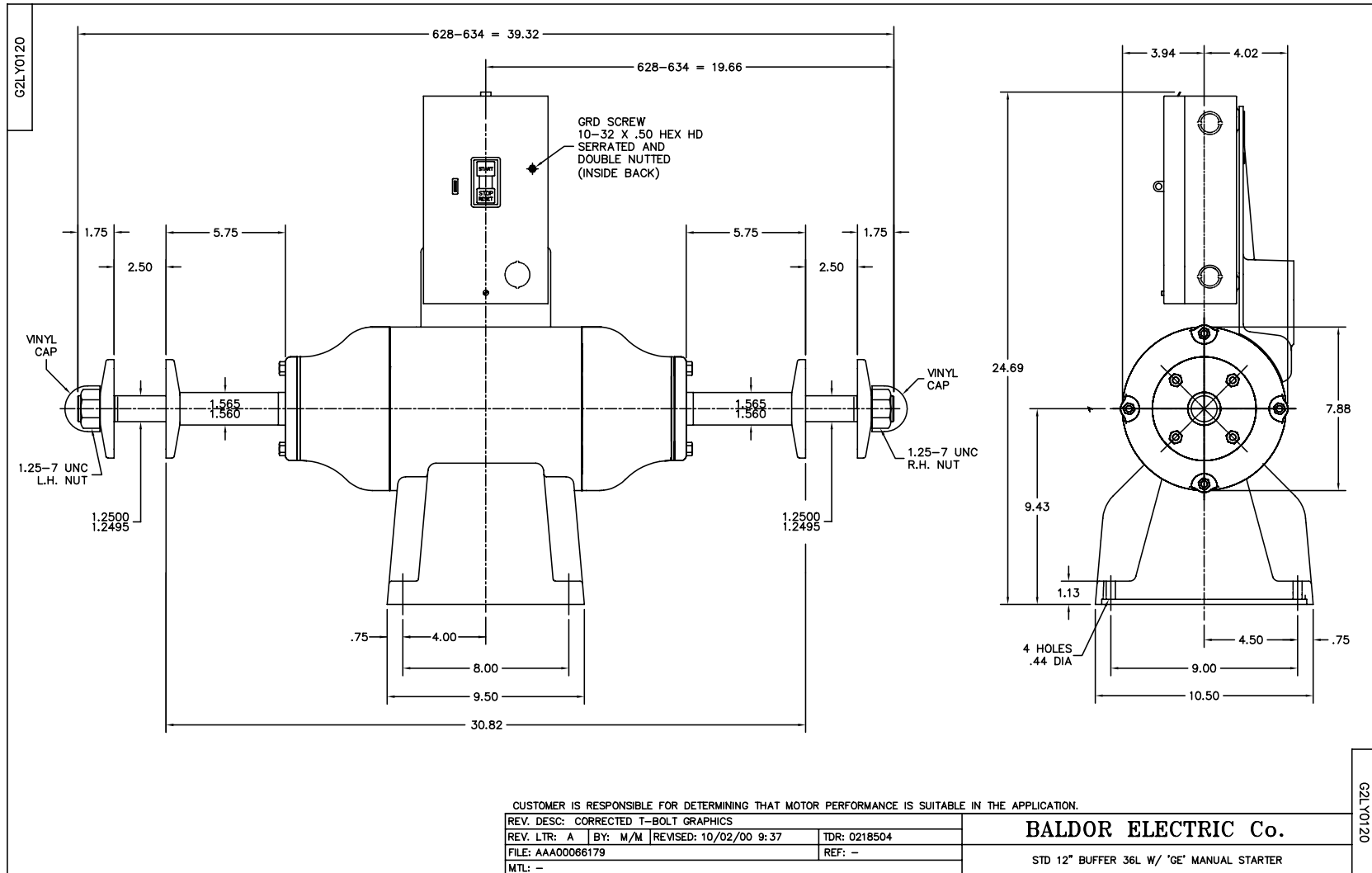
| Parts List (continued) | | |
|------------------------|--|----------|
| Part Number | Description | Quantity |
| 36CB4516 | 750LIPPED CB LID - GALVANNEAL | 1.000 EA |
| 37GS1001 | GASKET, CONDUIT BOX LID, .06 THICK LEXID | 1.000 EA |
| 51XW0832A07 | 8-32 X .44, TAPTITE II, HEX WSHR SLTD SE | 4.000 EA |
| G2EP1900A01 | ENDPLATE, MACH | 2.000 EA |
| HW5100A08 | W3118-035 WVY WSHR (WB) | 2.000 EA |
| 10XN3816A20 | 3/8-16X1 1/4 HEX HD CAP | 8.000 EA |
| HW1001A38 | LOCKWASHER 3/8, ZINC PLT .688 OD, .382 I | 8.000 EA |
| HA3104A13 | THRUBOLT 5/16-18 X 11.750 OHIO ROD | 4.000 EA |
| HW1001A31 | LOCKWASHER 5/16, ZINC PLT.591 OD, .319 I | 4.000 EA |
| MN906 | Baldor Buffer 6/13 | 1.000 EA |
| XY3118A12 | 5/16-18 HEX NUT DIRECTIONAL SERRATION | 4.000 EA |
| HA6051 | FLANGE, WHEEL, CAST | 4.000 EA |
| HW3022J06 | 1/4X.625 ROLLED SPR PIN | 2.000 EA |
| XZ2007A62SP | 1 1/4-7 NUT LH HEX (NC) | 1.000 EA |
| XZ2007A12SP | 1 1/4-7 NUT RH HX(NC)(F/S) | 1.000 EA |
| RM1010A07 | VNYL CAP 1.875-21 701-89 BLACK S/R Q=1 | 2.000 EA |
| LB1009N | LABEL,ROTATION DIRECTION (ON ROLLS) | 1.000 EA |
| LB1092 | LABEL, WARNING BUFFERS | 1.000 EA |
| LB1112 | LABEL GRDR STARTER BOX GR | 1.000 EA |
| LB5024 | TAG, CAUTION PRINT SHOP | 1.000 EA |
| 85XU0407S04 | 4X1/4 U DRIVE PIN STAINLESS | 2.000 EA |
| G4GS5000 | G14-23 GASKET X | 1.000 EA |
| MJ1000A02 | GREASE, MOBIL POLYREX EM - 124047 | 0.050 LB |
| HA1000A45 | DR11501.020 BRG GRD,B-N | 1.000 EA |

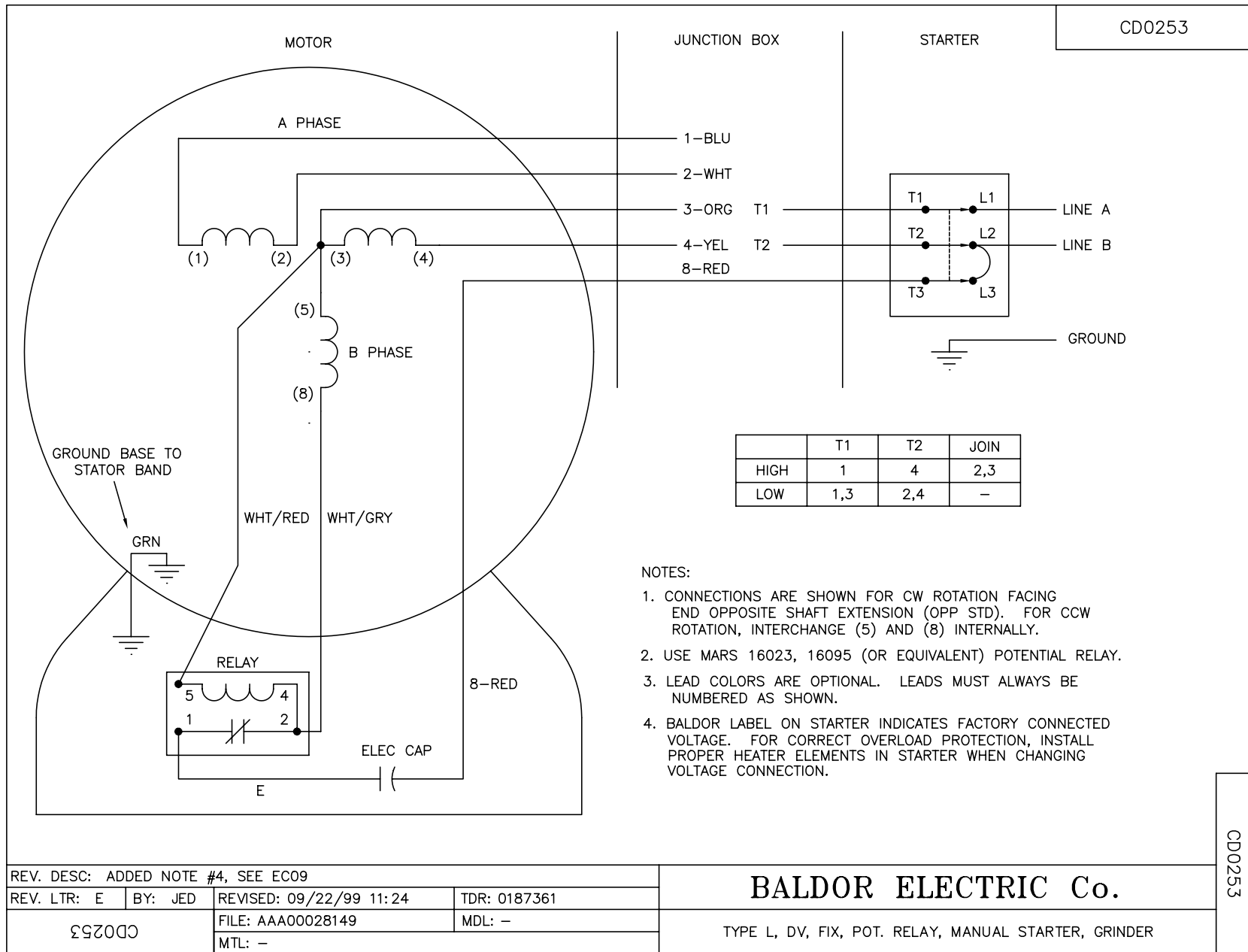
Product Information Packet: 1251 - 2HP,3600RPM,1PH,60HZ,3634L,BUFF

| | | |
|------------|--|----------|
| MG1000G01 | MUNSELL 5.93PB 3.81/ 2.71 | 0.017 GA |
| WD1000A15 | 3-520132-2 AMP FLAG (4M/RL NON-CANC/NON- | 3.000 EA |
| CN1900A02 | MAN. STARTER 'GE' NO. CR1062S3AAP2000, 3 | 1.000 EA |
| CN2006125B | HEATER, 'GE' NO. CR123C125B (FOR 'GE' ST | 3.000 EA |
| LB1119N | WARNING LABEL | 1.000 EA |
| MG2000A02 | RUST VETO-377-HF HOUGHTON | 0.001 GA |
| NP3352L | ALUM NAMEPLATE - BALDOR BUFFER NO LOGOS | 1.000 EA |
| G2PA1001 | PACKAGING GROUP | 1.000 EA |
| LB1618 | PROPOSITION 65 WARNING LABEL 1-1/2 X 1/2 | 1.000 EA |

| Accessories | | |
|--------------------|--|-------------------|
| Part Number | Description | Multiplier |
| GA20 | PEDESTAL INDUSTRIAL, CAST IRON 8"-14" | A8 |
| BQ1-015-CC | 1PH Brake, NEMA 1,110-125 VAC, 50/60Hz | P1 |
| BQ1-015-CP | 1PH Brake, Panel 110-125 VAC, 50/60 Hz | P1 |
| BQ2-015-CC | 1PH Brake,NEMA 1 208-230 VAC,50/60Hz | P1 |
| BQ2-015-CP | 1PH Brake, Panel 208-230 VAC, 50/60 Hz | |

No performance data has been
assigned to this product.





| | | | |
|------------------------------------|---------|-------------------------|--------------|
| REV. DESC: ADDED NOTE #4, SEE EC09 | | | |
| REV. LTR: E | BY: JED | REVISED: 09/22/99 11:24 | TDR: 0187361 |
| ΩΣD0253 | | FILE: AAA00028149 | MDL: - |
| | | MTL: - | |

BALDOR ELECTRIC Co.

TYPE L, DV, FIX, POT. RELAY, MANUAL STARTER, GRINDER

CD0253