



## NEMA Motor Data

MLFB-Ordering data : 1LE2221-2AA21-3AA3

Client order no. :  
Order no. :  
Offer no. :  
Remarks :

Item no. :  
Consignment no. :  
Project :

Nameplate Data	Mounting and motor protection
----------------	-------------------------------

Type: GP100 - NEMA Premium Efficiency

HP	10.0	Rating	Cont.
Voltage	(13) 575V STD, 60Hz	Ins. Class	Class F (Standard)
Amps	9.2 A	S.F.	1.15
FL RPM	3515	Amb. Temp.	+40C TO -20C
FL Efficiency	90.2 %	Temp. Rise	Class B
FRAME	215T	kVA Code	H
DE AFBMA	40BC02JPP30	NEMA Des	B
ODE AFBMA	40BC02JPP30	Mtr WT	208
60 Hertz	3 Ph TEFC	IP	55

Type of construction	( A ) Foot mounted - End shield
Motor protection	(A) Without Protection
Terminal box design	(3) F-1, Standard Floor Mount, T. Box

Bearing Data		
--------------	--	--

	DE	ODE
Bearing Size	6208 ZZ C3 S0	6208 ZZ C3 S0
Bearing Type	Ball Bearing	Ball Bearing
AFBMA	40BC02JPP30	40BC02JPP30

Typical Performance Data					
--------------------------	--	--	--	--	--

Load	No Load	1/2	3/4	Full Load	LRC
Efficiency		91.0 %	91.1 %	90.2 %	
Power Factor		81.5	88.8	90.3	
Current (A)	2.8 A	5.1 A	6.9 A	9.2 A	64.8 A
Inverter Duty	VT	20:1	CT	4:1	

Mechanical Data				
-----------------	--	--	--	--

SAFE STALL TIME	HOT (s)	14	COLD (s)	28
Rtr wt (lbs)	33.16	Rtr WK2	0.51	
FLT (lb-ft)	15.0	LRT (%)	180	BDT (%) 440
Ext Load Inertia (WK2) Capability	11.0 lb-ft <sup>2</sup>			
Brake:	without			

Typical Noise Data										
--------------------	--	--	--	--	--	--	--	--	--	--

A-weighted Sound	Octave Band Center Frequencies Hertz (Hz)								
Pressure Level	125	250	500	1000	2000	4000	8000	SPL	66
at 3 feet	36	53	55	63	62	58	47	SPwrL	78

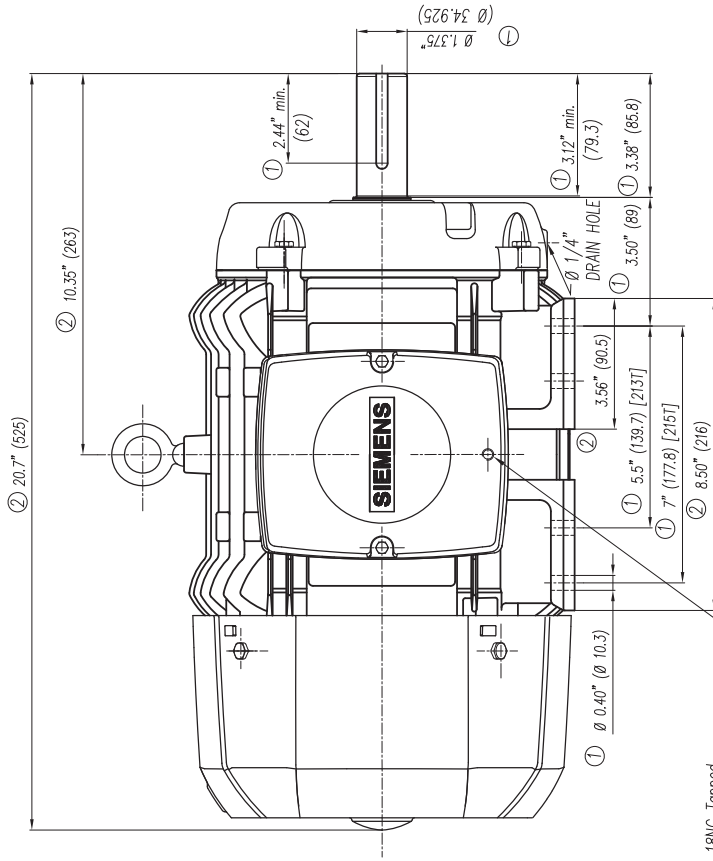
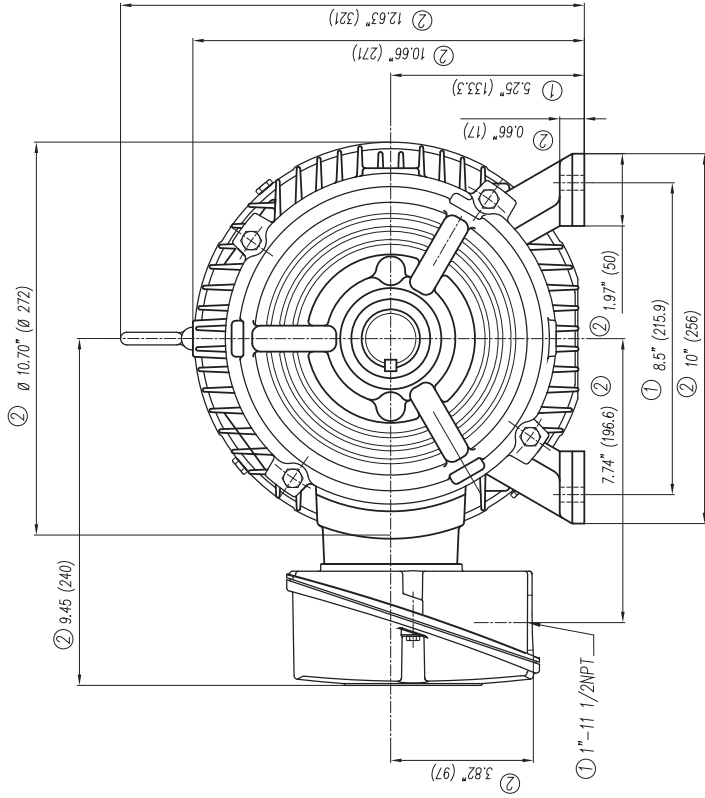
Wiring Connection Information					
-------------------------------	--	--	--	--	--

Description	3 PHASE - 3 LEAD - WYE				
Voltage	L1	L2	L3	Connected together	
-----	-----	-----	-----	-----	-
-----	T1	T2	T3	-----	Y

Special design :
------------------

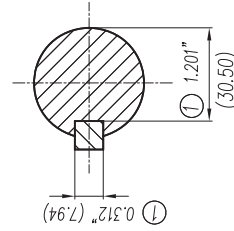
Lubrication Information	
-------------------------	--

Manufacturer	Mobil Polyrex EM or equal
Type	Polyurea (standard)
DE Capacity (oz.)	0.30
ODEnd Capacity (oz.)	0.30



5/16" -18NC Tapped Hole for Grounding both sides of Frame

- ① Tolerances According to NEMA Std.
- ② All these dimensions corresponding to assemblies and castings shall have a tolerance as per DIN standard 1686-GTB 19.
- ③ Not According to NEMA Std.



Keyseat detail  
Detalle Cuiño

<b>CERTIFIED PRINT/CERTIFICACION</b>			
CUSTOMER/CLIENTE			
PWA/OSHA COMPANY		SIA/ORDEN CLIENTE	
IP	REV	FRANK/ORA	TYPE/TPD
		VALS	PH/ALS
			RE

Tol. in mm. acc. to/Tot. en mm. según DIN-1686-GTB-19	Over/desde To/Hasta	± 4.5
---	18	± 4.7
	30	± 5
	50	± 5.5
	80	± 6
	120	± 6.5
	180	± 7
	250	± 7.5
	315	± 8
	400	± 8.5
	500	± 9.5
	630	± 10

European Projection/Proyección Europea	Dim. in inches/Dim. en pulg.	Date/Fecha	Name/Nombre
		03/03/08	Guymán
Drawn/Elab	Check/Rev.	Std.Ckd./Aut	Type/ Tipo:
			GP100 213/215T Arm.
<b>Outline/Dimensiones</b> New NEMA Motors			
Scale/Escala Sin W/O			
SIEMENS GUADALAJARA FACTORY			3MSE 222 0850a
Ref.			Rep./ 3MSE 222 0850 Sd6

g) Se cambió formato a Inglés-Español y se especificó tipos en los que aplica este dibujo.  
g) Changed the format to English-Spanish and was specified in what kind of motors apply this drawing.

Scale/Escala Sin W/O

Type/ Tipo: GP100 213/215T Arm.

3MSE 222 0850a

Rep./ 3MSE 222 0850 Sd6

GUADALAJARA FACTORY

Ref.

Scale/Escala Sin W/O

SIEMENS

GUADALAJARA FACTORY

3MSE 222 0850a

Rep./ 3MSE 222 0850 Sd6

Type/ Tipo: GP100 213/215T Arm.

Outline/Dimensiones

New NEMA Motors

European Projection/Proyección Europea

Dim. in inches/Dim. en pulg.

Date/Fecha

Name/Nombre

Drawn/Elab

Check/Rev.

Std.Ckd./Aut

Tol. in mm. acc. to/Tot. en mm. según DIN-1686-GTB-19

Over/desde To/Hasta

± 4.5

18

± 4.7

30

± 5

50

± 5.5

80

± 6

120

± 6.5

180

± 7

250

± 7.5

315

± 8

400

± 8.5

500

± 9.5

630

± 10

2

1

B

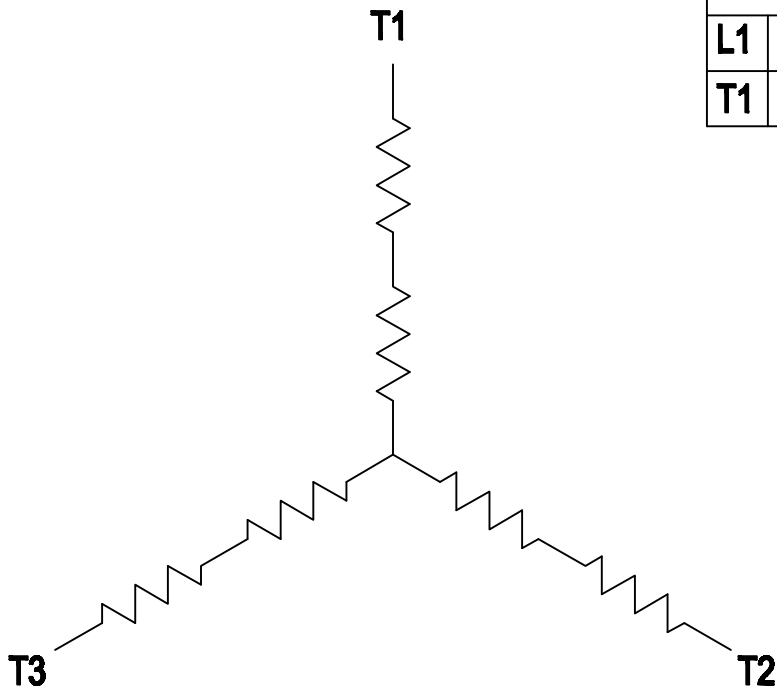
B

A

A

### 3 PHASE - 3 LEADS - WYE

LINES			CONN.
L1	L2	L3	
T1	T2	T3	Y



THIS IS A CAD DRAWING  
DO NOT MAKE MANUAL CHANGES

01 | 09-27-07

TYPE

-CONFIDENTIAL-

PROPERTY OF

Siemens Energy & Automation, Inc.  
Industrial Motor Division - Little Rock, AR

FRAME

HP

NAME

WIRING DIAGRAM

VOLTS

RPM

HZ

PH

3

Customer

PO #

SO #

DRAWN 9.24.07 DATE JRH

CHECKED DATE

APP DATE

SHEET 1 OF 1

Sim. To

PART NO.

51-382-114-503

A

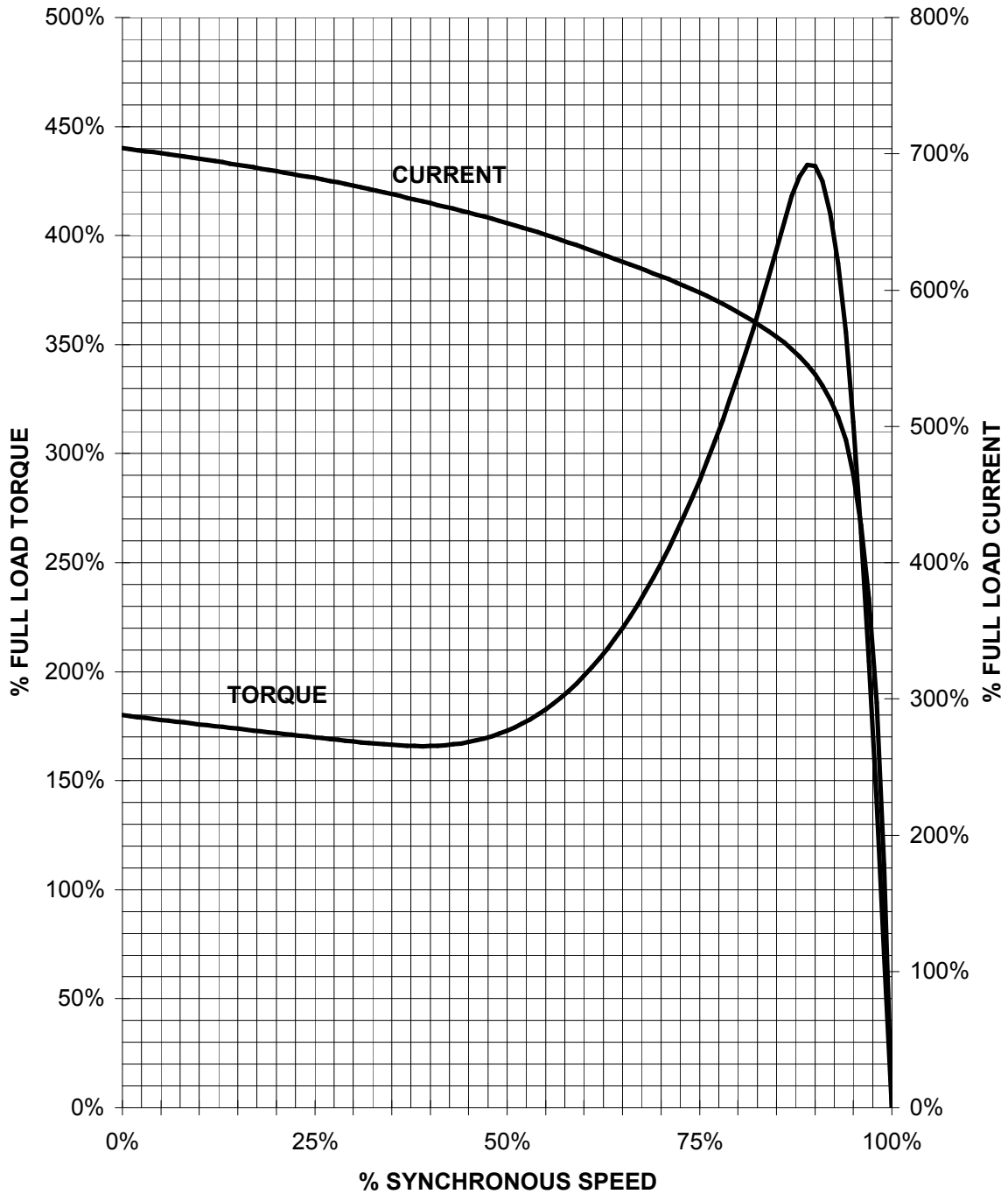
2

1

# SIEMENS INDUSTRY, INC.

HP 10 VOLTS < 600V RPM 3600 TYPE GP100  
HZ 60 PHASE 3 FRAME 215T NEMA B

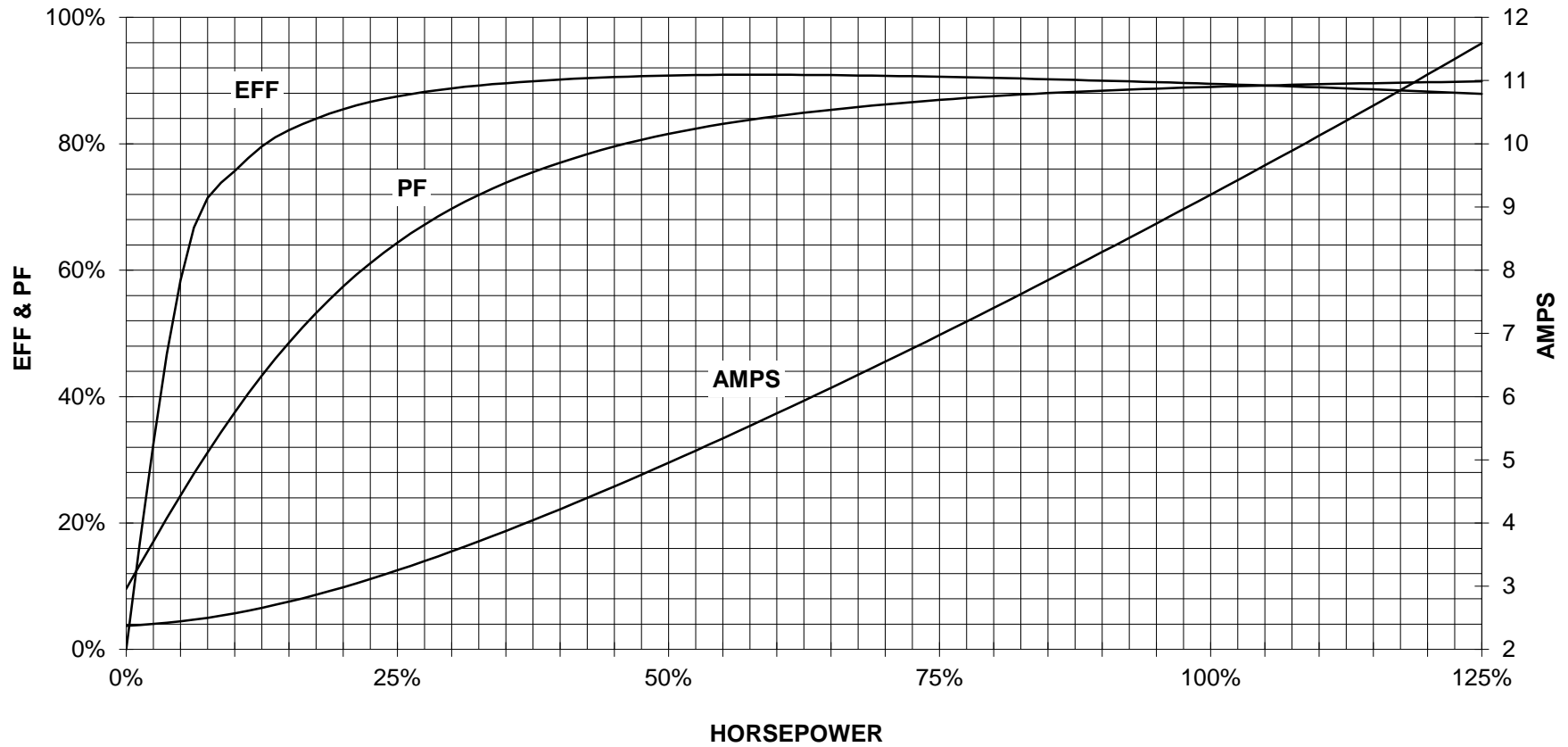
## TORQUE & CURRENT VS. SPEED



CUSTOMER: \_\_\_\_\_ ORDER#: \_\_\_\_\_

10 HP 3600 RPM 215T FRAME 575 VOLTS 3 PHASE NEMA DESIGN B

**SIEMENS INDUSTRY, INC.**  
**PERFORMANCE CURVE**  
**GP100**



CUSTOMER \_\_\_\_\_ ORDER # \_\_\_\_\_ PO # \_\_\_\_\_

PERFORMANCE BASED ON DESIGN CALCULATIONS. SUBJECT TO CHANGE WITHOUT NOTICE.

REV. 1