



## NEMA Motor Data

MLFB-Ordering data : 1LE2221-2AA21-4EA3

Client order no. :  
Order no. :  
Offer no. :  
Remarks :

Item no. :  
Consignment no. :  
Project :

| Nameplate Data | Mounting and motor protection |
|----------------|-------------------------------|
|----------------|-------------------------------|

Type: GP100 - NEMA Premium Efficiency

|               |  |            |                    |
|---------------|--|------------|--------------------|
| HP            | 10.0                                       | Rating     | Cont.              |
| Voltage       | (14) 230/460V, 60Hz<br>(Suitable for 208V) | Ins. Class | Class F (Standard) |
| Amps          | 23.0 / 11.5 A                              | S.F.       | 1.15               |
| FL RPM        | 3515                                       | Amb. Temp. | +40C TO -20C       |
| FL Efficiency | 90.2 %                                     | Temp. Rise | Class B            |
| FRAME         | 215TC                                      | kVA Code   | H                  |
| DE AFBMA      | 40BC02JPP30                                | NEMA Des   | B                  |
| ODE AFBMA     | 40BC02JPP30                                | Mtr WT     | 208                |
| 60 Hertz      | 3 Ph TEFC                                  | IP         | 55                 |

Type of construction (E) Foot mounted - C-Face  
Motor protection (A) Without Protection  
Terminal box design (3) F-1, Standard Floor Mount, T. Box

| Bearing Data |  |  |
|--------------|--|--|
|--------------|--|--|

|              |               |               |
|--------------|---------------|---------------|
|              | DE            | ODE           |
| Bearing Size | 6208 ZZ C3 S0 | 6208 ZZ C3 S0 |
| Bearing Type | Ball Bearing  | Ball Bearing  |
| AFBMA        | 40BC02JPP30   | 40BC02JPP30   |

| Typical Performance Data |  |  |  |  |  |
|--------------------------|--|--|--|--|--|
|--------------------------|--|--|--|--|--|

|               |         |        |        |             |        |
|---------------|---------|--------|--------|-------------|--------|
| Load          | No Load | 1/2    | 3/4    | Full Load   | LRC    |
| Efficiency    |         | 91.0 % | 91.1 % | 90.2 %      |        |
| Power Factor  |         | 81.5   | 88.8   | 90.3        |        |
| Current (A)   | 3.5 A   | 6.3 A  | 8.7 A  | 23.0 / 11.5 | 81.0 A |
| Inverter Duty | VT      | 20:1   | CT     | 4:1         |        |

| Mechanical Data |  |  |  |  |
|-----------------|--|--|--|--|
|-----------------|--|--|--|--|

|                                   |                         |         |          |             |
|-----------------------------------|-------------------------|---------|----------|-------------|
| SAFE STALL TIME                   | HOT (s)                 | 14      | COLD (s) | 28          |
| Rtr wt (lbs)                      | 33.16                   | Rtr WK2 | 0.51     |             |
| FLT (lb-ft)                       | 15.0                    | LRT (%) | 180      | BDT (%) 440 |
| Ext Load Inertia (WK2) Capability | 11.0 lb-ft <sup>2</sup> |         |          |             |
| Brake:                            | without                 |         |          |             |

| Typical Noise Data |  |  |  |  |  |  |  |  |  |  |
|--------------------|--|--|--|--|--|--|--|--|--|--|
|--------------------|--|--|--|--|--|--|--|--|--|--|

|                  |   |     |     |      |      |      |      |       |    |  |
|------------------|---|-----|-----|------|------|------|------|-------|----|--|
| A-weighted Sound | Octave Band Center Frequencies Hertz (Hz) |     |     |      |      |      |      |       |    |  |
| Pressure Level   | 125                                       | 250 | 500 | 1000 | 2000 | 4000 | 8000 | SPL   | 66 |  |
| at 3 feet        | 36  | 53  | 55  | 63   | 62   | 58   | 47   | SPwrL | 78 |  |

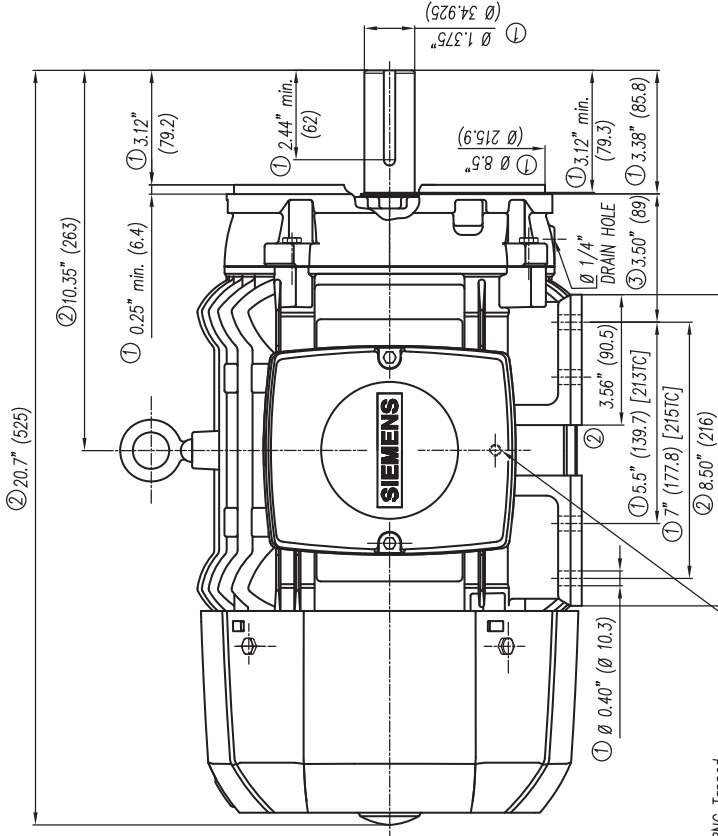
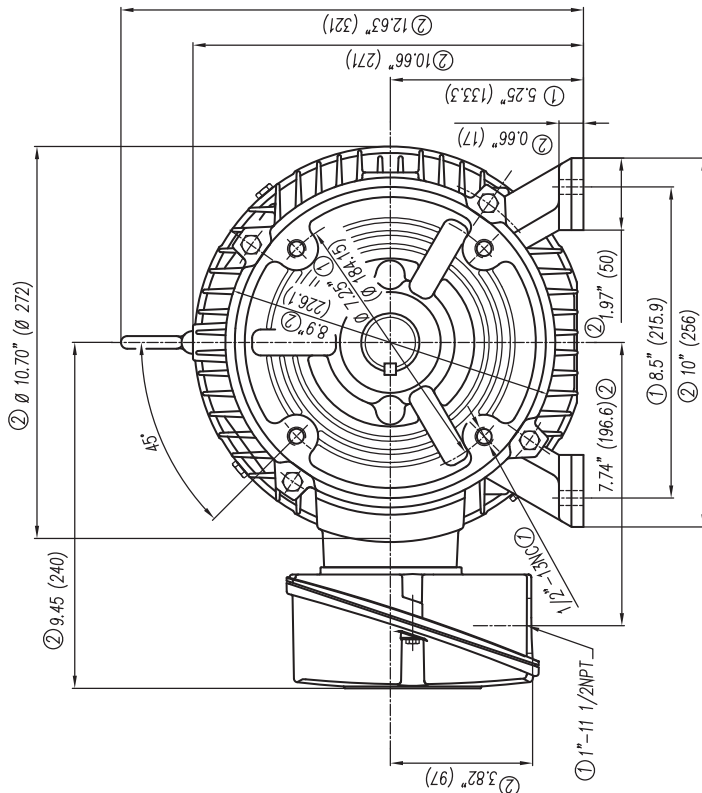
| Wiring Connection Information |  |  |  |  |  |
|-------------------------------|--|--|--|--|--|
|-------------------------------|--|--|--|--|--|

|             |                        |       |       |                     |  |
|-------------|------------------------|-------|-------|---------------------|--|
| Description | 3 PHASE - 9 LEAD - WYE |       |       |                     |  |
| Voltage     | L1                     | L2    | L3    | Connected together  |  |
| LOW         | T1 T7                  | T2 T8 | T3 T9 | T4 T5 T6 YY         |  |
| HIGH        | T1                     | T2    | T3    | T4 T7-T5 T8-T6 T9 Y |  |

|                  |
|------------------|
| Special design : |
|------------------|

| Lubrication Information |  |
|-------------------------|--|
|-------------------------|--|

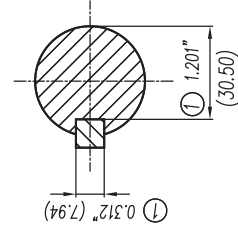
|                      |                           |
|----------------------|---------------------------|
| Manufacturer         | Mobil Polyrex EM or equal |
| Type                 | Polyurea (standard)       |
| DE Capacity (oz.)    | 0.30                      |
| ODEnd Capacity (oz.) | 0.30                      |



5/16"-18NC Tapped Hole for Grounding both sides of Frame

- 1) Tolerances According to NEMA Std.
- 2) All these dimensions corresponding to assemblies and castings shall have a tolerance as per DIN standard 1686-G1B 19.
- 3) Not According to NEMA Std.

- 1) Tolerancias acorde a NEMA Std.
- 2) Todas estas dimensiones correspondientes a ensambles y fundición en bruto tendrán una tolerancia según DIN 1686-G1B-19
- 3) No Acorde a NEMA Std.



Keyseat detail  
Detalle Cuñero

|                                      |                |           |           |
|--------------------------------------|----------------|-----------|-----------|
| <b>CERTIFIED PRINT/CERTIFICACION</b> |                |           |           |
| ESTRUCTURA/CENTRO                    | SOLUBRE/CENTRO |           |           |
| PP                                   | RM             | FRAME/ARM | TYPE/TIPO |
|                                      |                | VALS      | PIVALS    |
|                                      |                |           | RE        |

|  |                         |  |       |
|--|-------------------------|--|-------|
| <br>European Projection/<br>Proyeccion Europea | <br>To dir./<br>No dir. | Tol. in mm. acc. to/Tol. en mm. segun DIN-1686-GTB-19<br>Over/desde to/hasta |       |
|  |                         | 18   | ± 4.5 |
|  |                         | 30   | ± 4.7 |
|  |                         | 50   | ± 5   |
|  |                         | 80   | ± 5.5 |
|  |                         | 120  | ± 6   |
|  |                         | 180  | ± 6.5 |
|  |                         | 250  | ± 7   |
|  |                         | 315  | ± 7.5 |
|  |                         | 400  | ± 8   |
|  |                         | 500  | ± 8.5 |
|  |                         | 630  | ± 9.5 |
|  |                         | 800  | ± 10  |

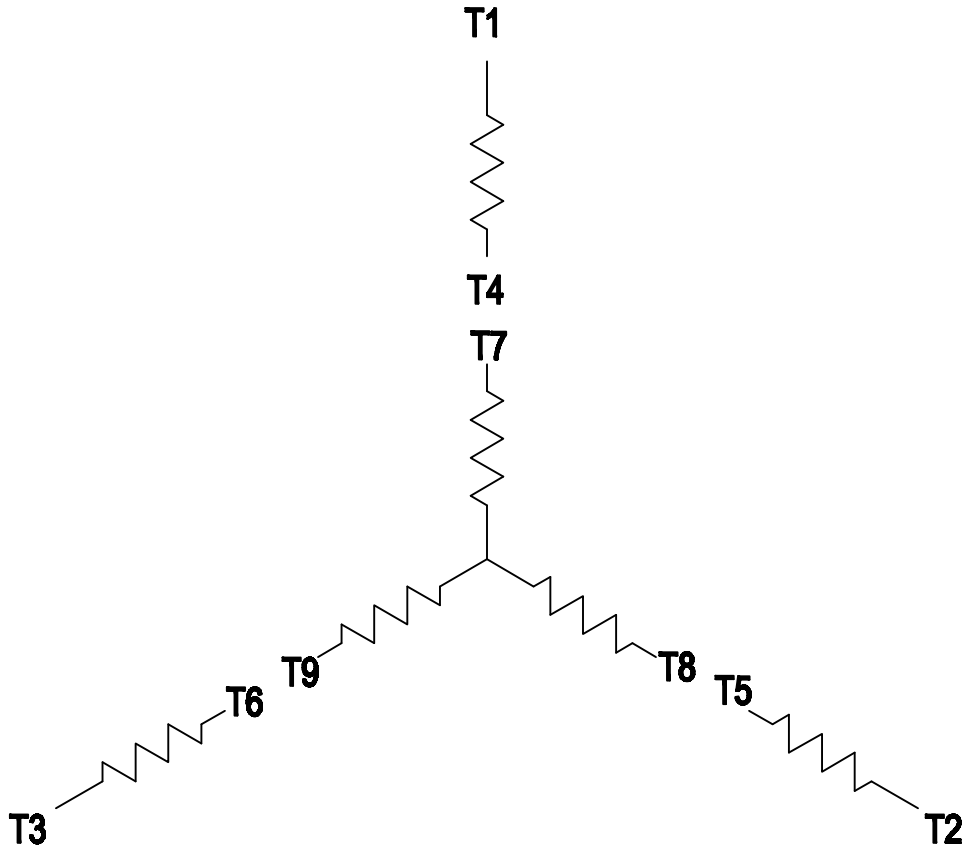
a) Se cambio formato a Inglés-Español y se especificó tipos en los que aplica este dibujo.  
 a) Changed the format to English-Spanish and was specified in what kind of motors apply this drawing.

|               |          |
|---------------|----------|
| Date/Fecha    | 03/03/08 |
| Drawn/Elab    | Suzymari |
| Check/Rev.    |          |
| Std.Cnd./Aut. |          |

Dim. in inches/Dim. en pulg.  
 Type/ Tipo: GP100 213/215TC Arm.  
**SIEMENS**  
 GUADALAJARA FACTORY  
 Ref. 3MSE 222 0851a  
 Scale/Escala: Sin W/O

### 3 PHASE - 9 LEADS - WYE

| VOLTS | LINES    |          |          | CONNECTED TOGETHER | CONN. |
|-------|----------|----------|----------|--------------------|-------|
|       | L1       | L2       | L3       |                    |       |
| LOW   | T1<br>T7 | T2<br>T8 | T3<br>T9 | T4 T5 T6           | Y Y   |
| HIGH  | T1       | T2       | T3       | T4 T7-T5 T8-T6 T9  | Y     |



THIS IS A CAD DRAWING  
DO NOT MAKE MANUAL CHANGES

01 | 09-27-07

TYPE

-CONFIDENTIAL-

PROPERTY OF

Siemens Energy & Automation, Inc.  
Industrial Motor Division - Little Rock, AR

FRAME

HP

NAME

WIRING DIAGRAM

VOLTS

RPM

HZ

PH

3

Customer

PO #

SO #

DRAWN

9.24.07

DATE

JRH

CHECKED

DATE

APP

DATE

SHEET

1 OF 1

Sim. To

PART NO.

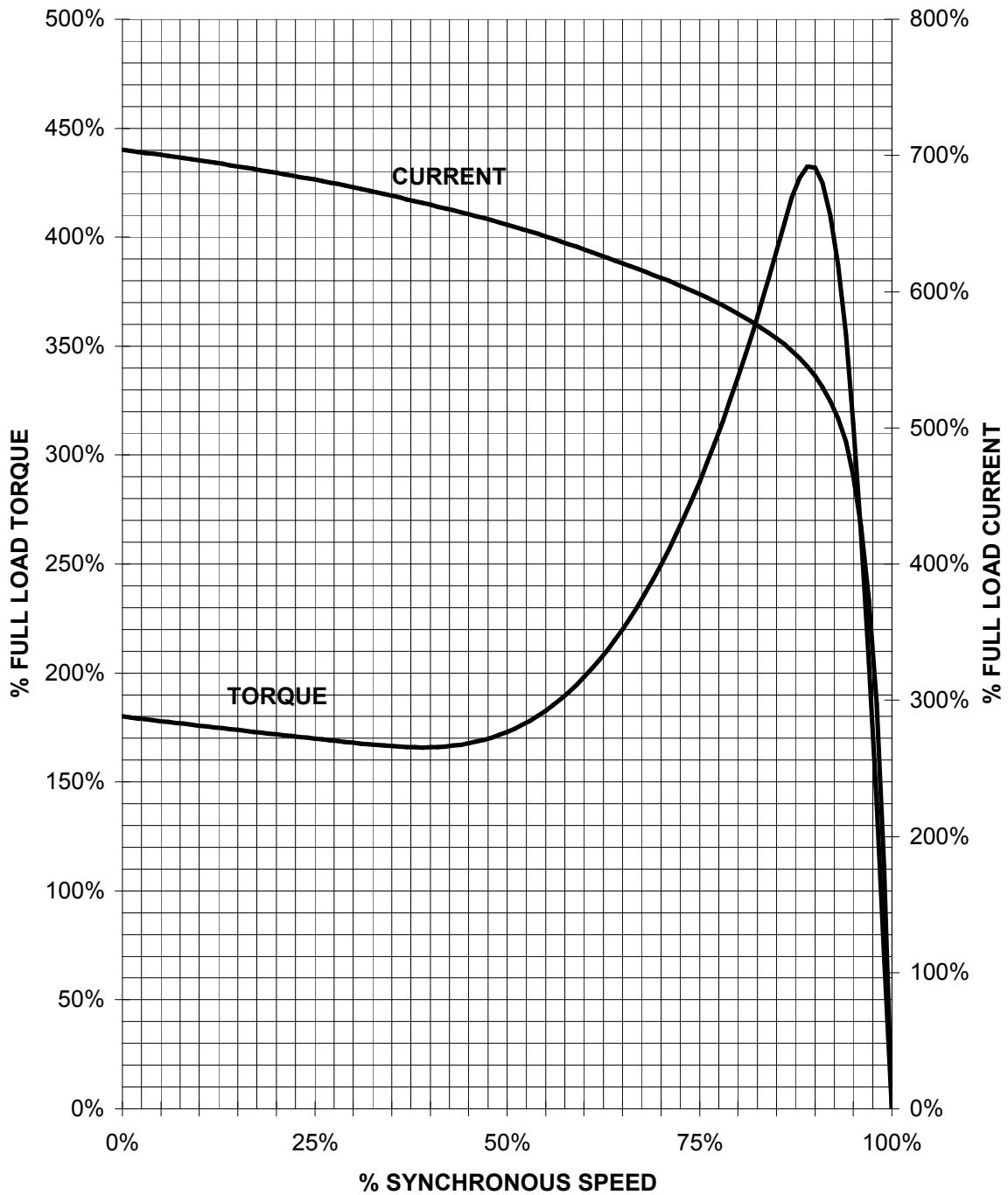
51-382-114-501

A

# SIEMENS INDUSTRY, INC.

HP 10 VOLTS < 600V RPM 3600 TYPE GP100  
HZ 60 PHASE 3 FRAME 215T NEMA B

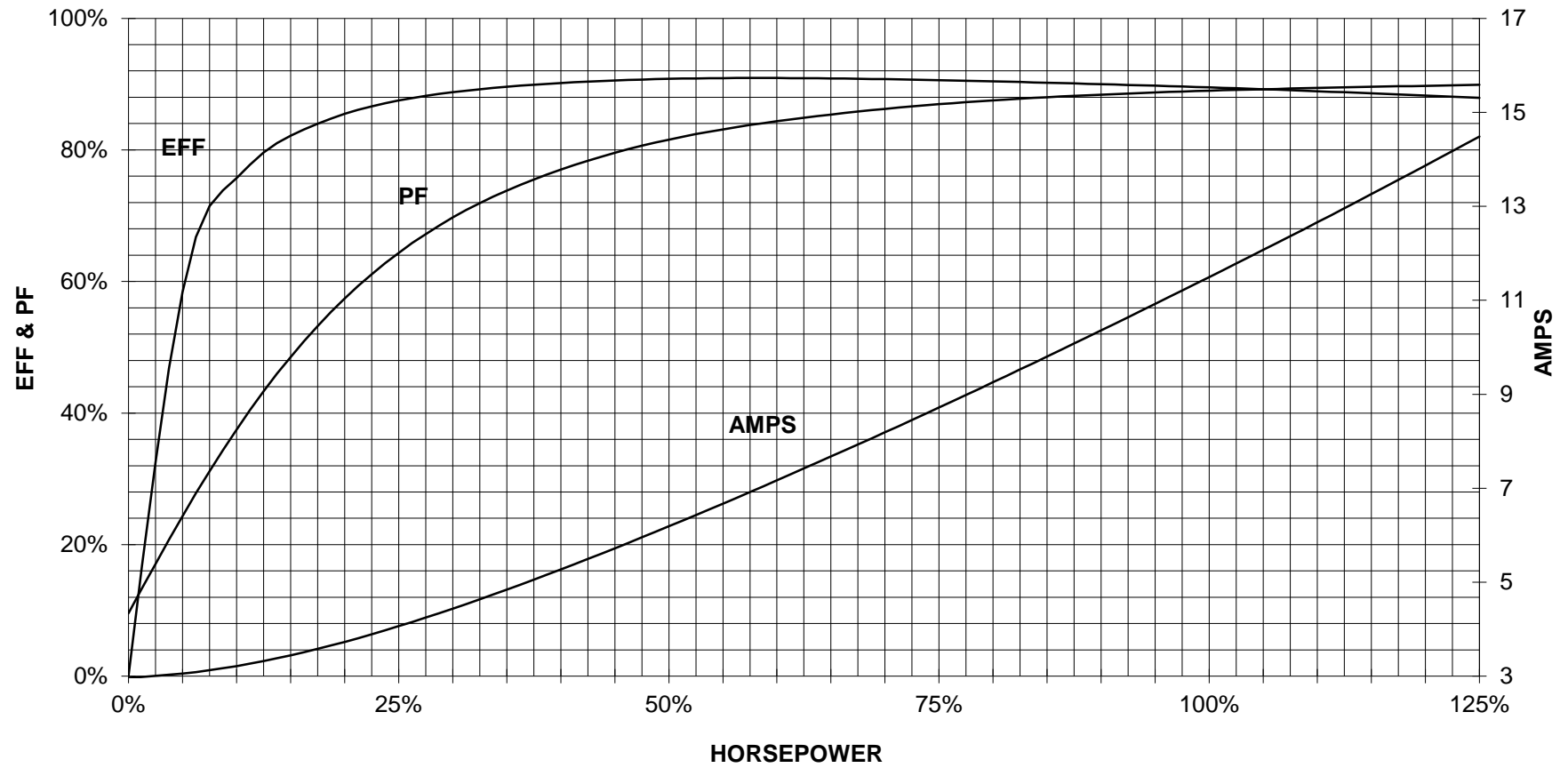
## TORQUE & CURRENT VS. SPEED



CUSTOMER: \_\_\_\_\_ ORDER#: \_\_\_\_\_

10 HP 3600 RPM 215T FRAME 460 VOLTS 3 PHASE NEMA DESIGN B

**SIEMENS INDUSTRY, INC.**  
**PERFORMANCE CURVE**  
**GP100**



CUSTOMER \_\_\_\_\_ ORDER # \_\_\_\_\_ PO # \_\_\_\_\_

PERFORMANCE BASED ON DESIGN CALCULATIONS. SUBJECT TO CHANGE WITHOUT NOTICE.

REV. 1