



## NEMA Motor Data

MLFB-Ordering data : 1LE2221-2AB21-4EA3

Client order no. :  
 Order no. :  
 Offer no. :  
 Remarks :

Item no. :  
 Consignment no. :  
 Project :

Nameplate Data	Mounting and motor protection
----------------	-------------------------------

Type: GP100 - NEMA Premium Efficiency			
HP	10.0	Rating	Cont.
Voltage	(14) 230/460V, 60Hz (Suitable for 208V)	Ins. Class	Class F (Standard)
Amps	25.0 / 12.5 A	S.F.	1.15
FL RPM	1755	Amb. Temp.	+40C TO -20C
FL Efficiency	91.7 %	Temp. Rise	Class B
FRAME	215TC	kVA Code	H
DE AFBMA	40BC02JPP30	NEMA Des	B
ODE AFBMA	40BC02JPP30	Mtr WT	166
60 Hertz	3 Ph TEFC	IP	55

Type of construction	( E ) Foot mounted - C-Face
Motor protection	(A) Without Protection
Terminal box design	(3) F-1, Standard Floor Mount, T. Box

Bearing Data		
	DE	ODE
Bearing Size	6208 ZZ C3 S0	6208 ZZ C3 S0
Bearing Type	Ball Bearing	Ball Bearing
AFBMA	40BC02JPP30	40BC02JPP30

Typical Performance Data					
--------------------------	--	--	--	--	--

Load	No Load	1/2	3/4	Full Load	LRC
Efficiency		91.7 %	92.2 %	91.7 %	
Power Factor		63.8	76.2	81.7	
Current (A)	6.1 A	8.0 A	10.0 A	25.0 / 12.5	81.0 A
Inverter Duty	VT	20:1	CT	4:1	

Mechanical Data				
-----------------	--	--	--	--

SAFE STALL TIME	HOT (s)	20	COLD (s)	36
Rtr wt (lbs)	44.63	Rtr WK2	0.86	
FLT (lb-ft)	30.0	LRT (%)	270	BDT (%) 410
Ext Load Inertia (WK2) Capability	51.0 lb-ft <sup>2</sup>			
Brake:	without			

Typical Noise Data										
--------------------	--	--	--	--	--	--	--	--	--	--

A-weighted Sound	Octave Band Center Frequencies Hertz (Hz)								
Pressure Level	125	250	500	1000	2000	4000	8000	SPL	57
at 3 feet	0	37	44	54	53	44	35	SPwrL	69

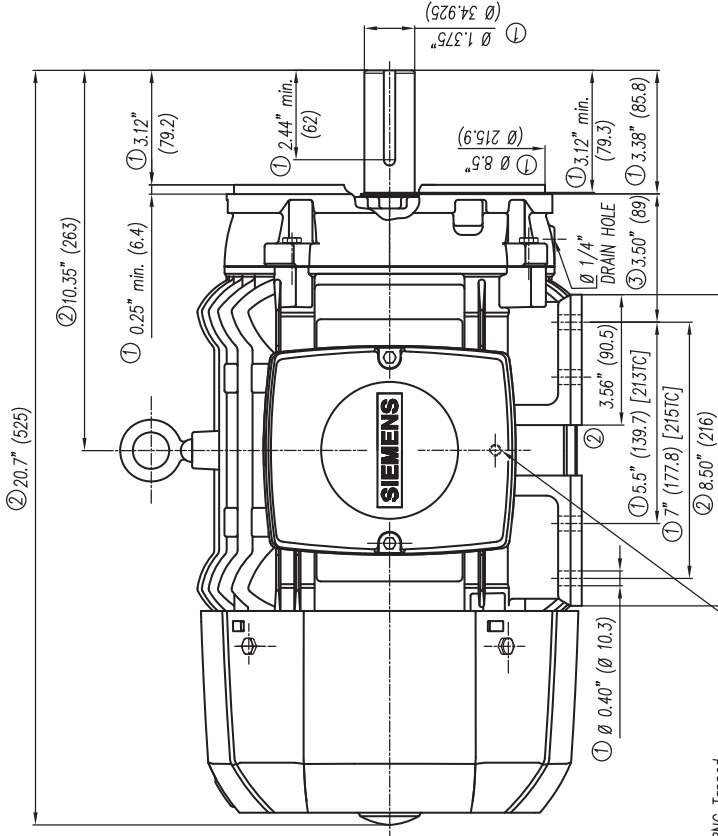
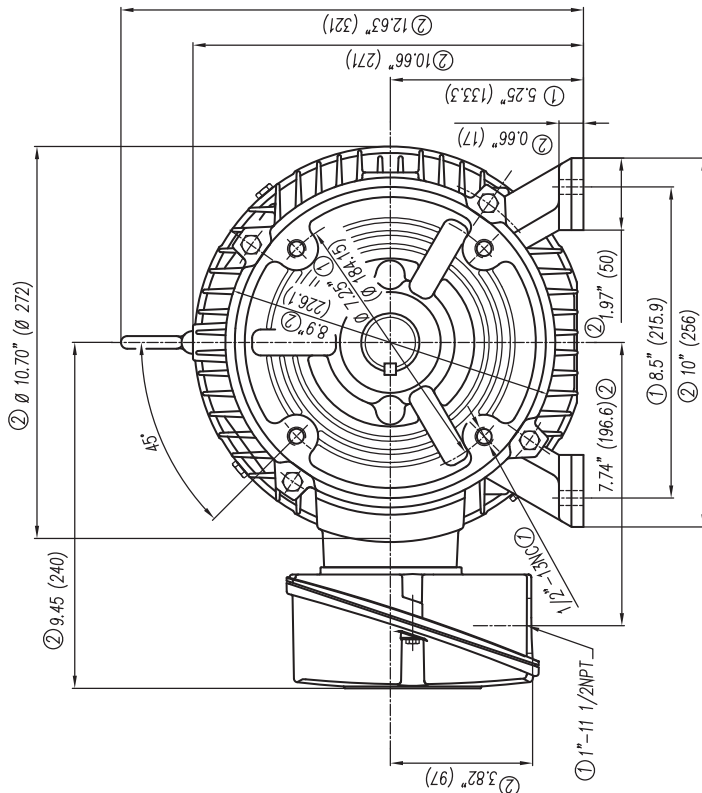
Wiring Connection Information					
-------------------------------	--	--	--	--	--

Description	3 PHASE - 9 LEAD - WYE				
Voltage	L1	L2	L3	Connected together	
LOW	T1 T7	T2 T8	T3 T9	T4 T5 T6 YY	
HIGH	T1	T2	T3	T4 T7-T5 T8-T6 T9 Y	

Special design :
------------------

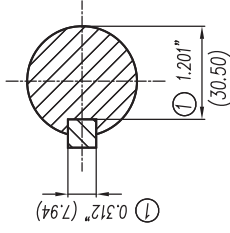
Lubrication Information	
-------------------------	--

Manufacturer	Mobil Polyrex EM or equal
Type	Polyurea (standard)
DE Capacity (oz.)	0.30
ODEnd Capacity (oz.)	0.30



5/16"-18NC Tapped Hole for Grounding both sides of Frame

- ① Tolerancias According to NEMA Std.
- ② All these dimensions corresponding to assemblies and castings shall have a tolerance as per DIN standard 1686-GTB 19.
- ③ Not According to NEMA Std.



Keyseat detail  
Detalle Cuñero

CERTIFIED PRINT/CERTIFICACION			
CUSTOMER/CIENTE		SOLUBRENT CENTER	
PP	FRM	FRM/FRM	FRM/FRM
FRM	FRM/FRM	FRM/FRM	FRM

Tol. in mm. acc. to Tol. en mm. segun DIN-1686-GTB-19	18	± 4.5
Over/hasta	30	± 4.7
---	50	± 5
18	80	± 5.5
30	120	± 6
50	180	± 6.5
80	250	± 7
120	315	± 7.5
180	400	± 8
250	500	± 8.5
315	630	± 9.5
400	800	± 10

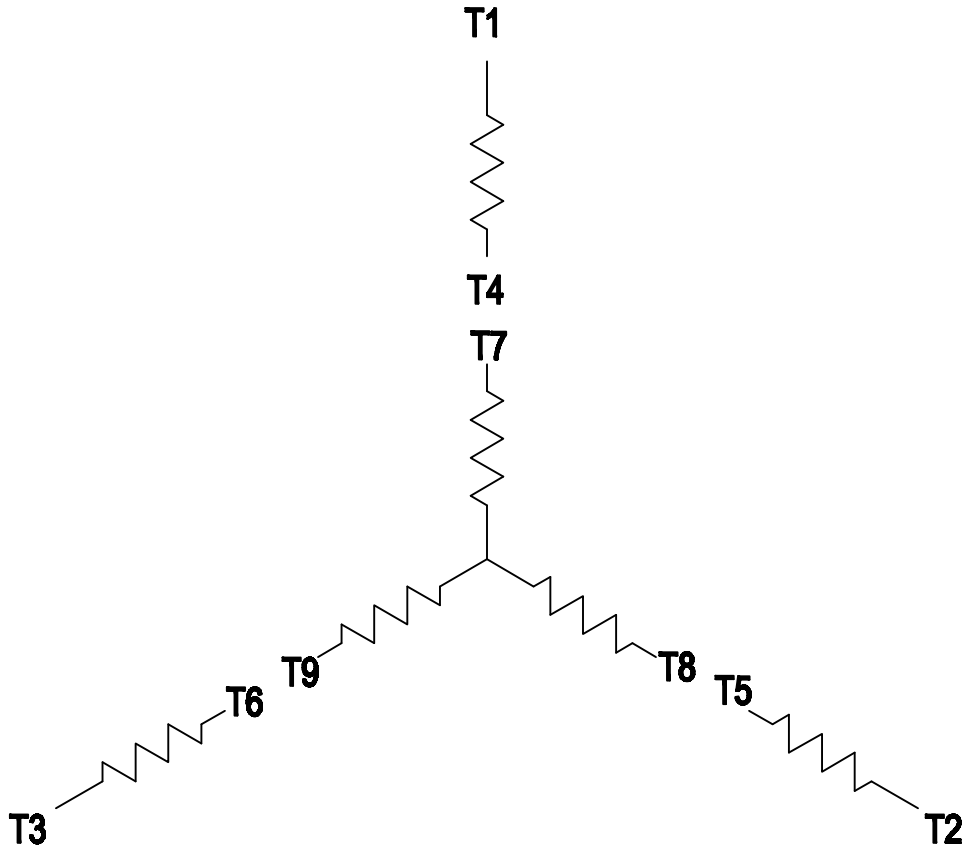
European Projection/ Proyeccion Europea	1st Ang.	To d. fit.	
Dim. in inches/Dim. en pulg.	Date/Fecha	Name/Nombre	Scale/Escala
	03/03/08	Suzymari	W/O
	Drawn/Elab	Check/Rev.	W/O
	Std.Cnd./Aut	Type/ Tipo	213/215TC Arm.
		GP100	3MSE 222 0851a
		Ref.	3MSE 222 0851
		Scale/Escala	W/O

Se cambio formato a Inglés-Español y se especificó tipos en los que aplica este dibujo.  
Changed the format to English-Spanish and was specified in what kind of motors apply this drawing.

SIEMENS  
GUADALAJARA FACTORY

### 3 PHASE - 9 LEADS - WYE

VOLTS	LINES			CONNECTED TOGETHER	CONN.
	L1	L2	L3		
LOW	T1 T7	T2 T8	T3 T9	T4 T5 T6	Y Y
HIGH	T1	T2	T3	T4 T7-T5 T8-T6 T9	Y



THIS IS A CAD DRAWING  
DO NOT MAKE MANUAL CHANGES

01 | 09-27-07

TYPE

-CONFIDENTIAL-

PROPERTY OF

Siemens Energy & Automation, Inc.  
Industrial Motor Division - Little Rock, AR

FRAME

HP

NAME

WIRING DIAGRAM

VOLTS

RPM

HZ

PH

3

Customer

PO #

SO #

DRAWN 9.24.07

DATE JRH

CHECKED

DATE

APP

DATE

SHEET

1 OF 1

Sim. To

PART NO.

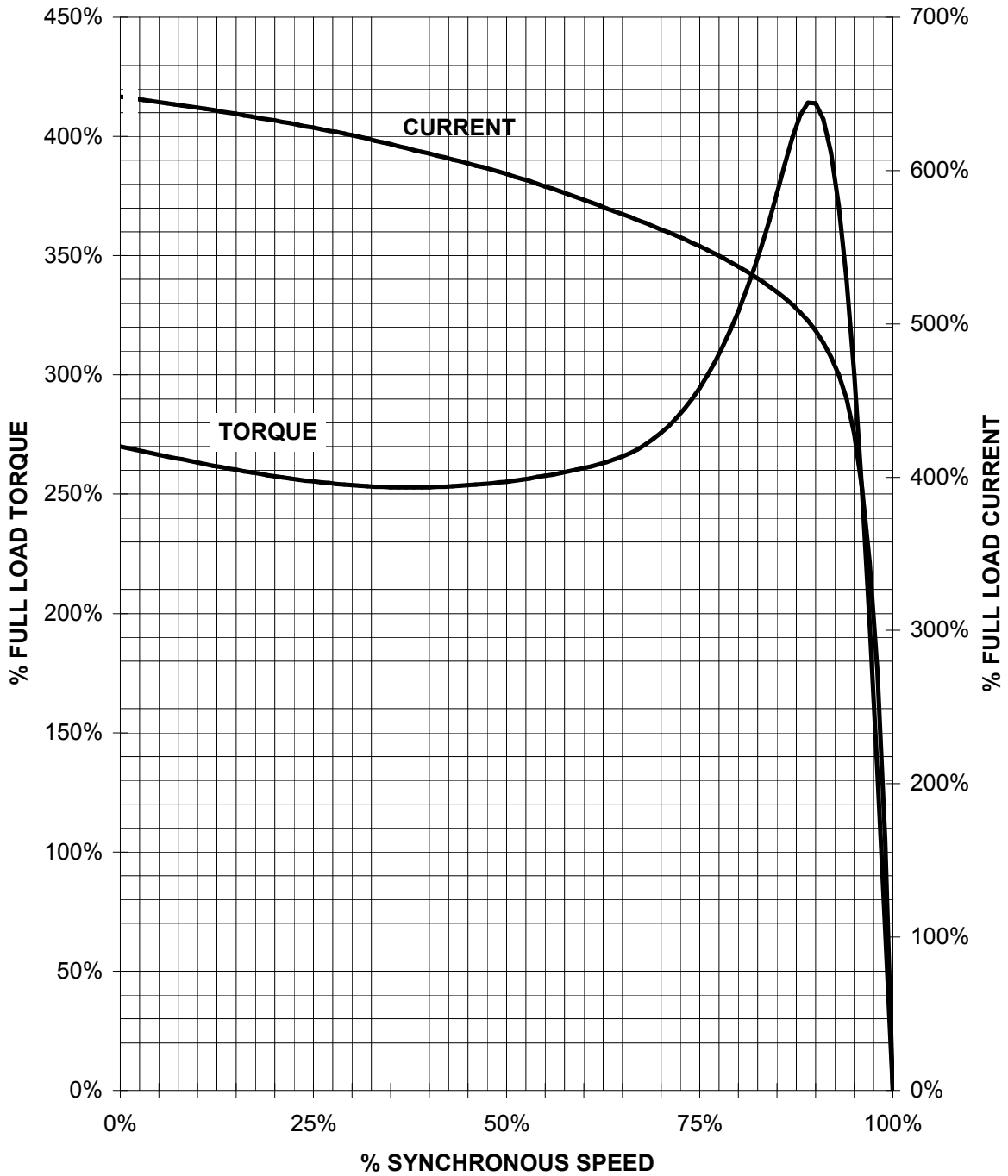
51-382-114-501

A

# SIEMENS INDUSTRY, INC.

HP 10 VOLTS < 600V RPM 1800 TYPE GP100  
HZ 60 PHASE 3 FRAME 215T NEMA B

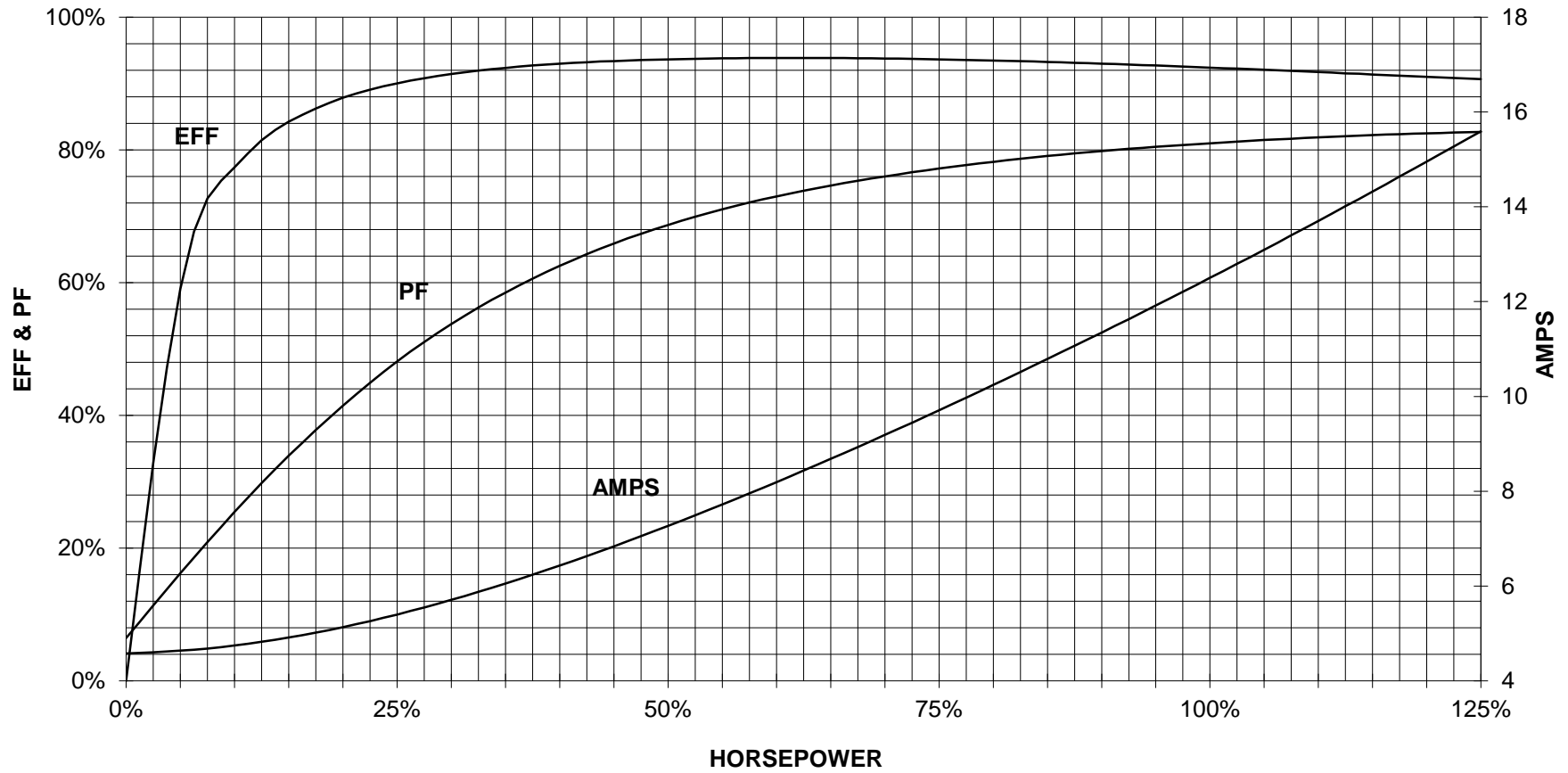
## TORQUE & CURRENT VS. SPEED



CUSTOMER: \_\_\_\_\_ ORDER#: \_\_\_\_\_

10 HP 1800 RPM 215T FRAME 460 VOLTS 3 PHASE NEMA DESIGN B

**SIEMENS INDUSTRY, INC.**  
**PERFORMANCE CURVE**  
**GP100**



CUSTOMER \_\_\_\_\_ ORDER # \_\_\_\_\_ PO # \_\_\_\_\_

PERFORMANCE BASED ON DESIGN CALCULATIONS. SUBJECT TO CHANGE WITHOUT NOTICE.

REV. 1