

Data sheet for three-phase Squirrel-Cage-Motors SIMOTICS

Motor type: **GP100** FS: **284T - 8p - 10 hp -**

Client order no.	Item-No.	Offer no.
Order no.	Consignment no.	Project
Remarks		

Electrical data

U [V]	Δ/Y	f [Hz]	P [HP]	P [kW]	n [rpm]	I Load [Amps]					LRC	Nom. Eff Load [%]			Pwr. Factor Load [%]			Torque [lb-ft]	T _A /T _N LRT [%]	T _k /T _N BDT [%]
						4/4	3/4	1/2	0	4/4		3/4	2/4	4/4	3/4	2/4				
460	Δ	60	10.00	7.50	900	17.00	14.80	12.60	11.00	81.0	90.2	89.8	88.2	61.0	53.0	42.0	59.0	161	224	
230	$\Delta\Delta$	60	10.00	7.50	900	34.00	29.51	25.28	22.00	162.0	90.2	89.8	88.2	61.0	53.0	42.0	59.0	161	224	

without

Frame Type: 284T	Type of constr.: (A) Foot mounted - End shield	Ins. Cl.: Standard Class F Insulation	Motor Prot.: (A) Without Protection	NEMA Des.: B	S.F.: 1.15
Mtr. WT: 418		Temp. Rise Cl.: B	Amb. Temp.: + 40 to -20 °C @1000 m	kVA: H	IP 54


Mechanical data

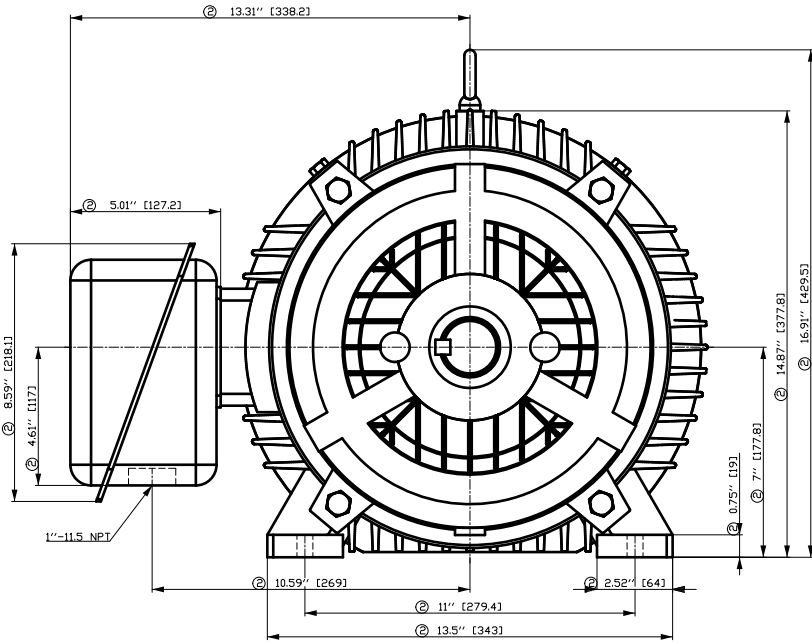
Sound level (SPL / SWL) at 60 Hz	59.0 dB(A) / 70.0 dB(A)	Thickener	Polyurea						
Octave Band Center Frequencies Hertz		Safe Stall Time Hot	15 s						
250	500	1000	2000	4000	8000	Hz	Safe Stall Time Cold	30 s	
SPL@3	51.0	54.0	52.0	54.0	44.0	37.0	dB(A)	Frame material	cast iron
Moment of inertia	4.0 Lb-ft ²	Color, paint shade	Standard Paint - RAL7030						
Ext Load Inertia Capability:	273.0 Lb ft ²	Coating (paint finish)	Standard Alkyed + Epoxy (C2)						
Bearings		Ventilation Type							
Bearing DE NDE	6310 Z C3 S0	6210 ZZ C3 S0	Method of cooling	TEFC					
Bearing_Type	Ball Bearing	Ball Bearing	Direction of rotation	Bidirectional					
AFBMA:	50BC03JP30	50BC02JPP30	Fan Material	Polypropylen ESD					
Grease		VFD	CT: 4:1	VT: 20:1					
Capacity	2.6 oz	2.3 oz	Space heaters	without					
Grease Type:	Exxon Mobile EM	Brake:	without						

Terminal box

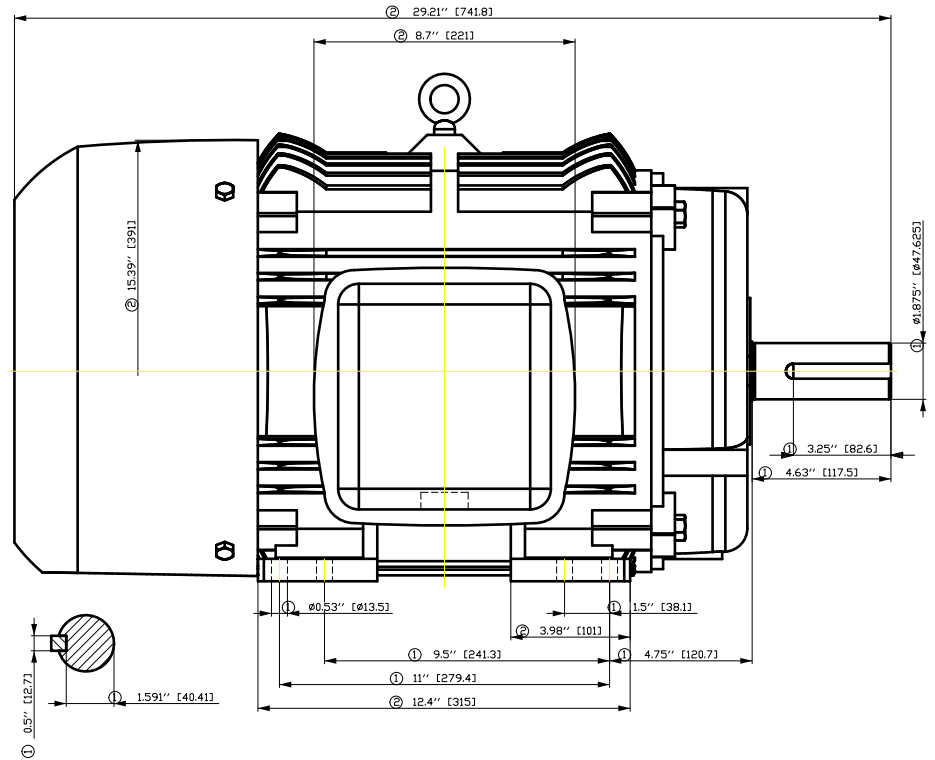
Lead Wire Connection	9 LEAD - DELTA	Terminal box position	(3) F-1, Standard Floor Mount, T. Box LHS
Voltage	L1 L1 L1 Connected together	Material of terminal box	Stamped Steel
LOW	T1 T7 T6 T2 T8 T4 T3 T9 T5	Cable entry	1.5" NPT
HIGH	T1 T2 T3 T4 T7-T5 T8-T6 T9		

Notes:			
I _L /I _N = locked rotor current / current nominal	M _L /M _N = locked rotor torque / torque nominal	M _L /M _N = break down torque / nominal torque	3) Value is valid only for DOL operation with motor design IC411 2) at rated power / at full load

responsible dep. DI MC LVM	technical reference	created by DT Configurator	approved by	<i>Technical data are subject to change! There may be discrepancies between software and hardware versions</i>	
	document type datasheet	document status released	customer		
	title 1LE2221-2CD11-6AA3	document number	rev. 01	creation date 2022-04-08 20:31	language en
© Siemens AG 2022					



- ① Tolerances according to NEMA std.
- ② All these dimensions corresponding to assemblies and castings shall have a tolerance as per DIN standard 1686-GTB 19.
- ③ Not according to NEMA std.

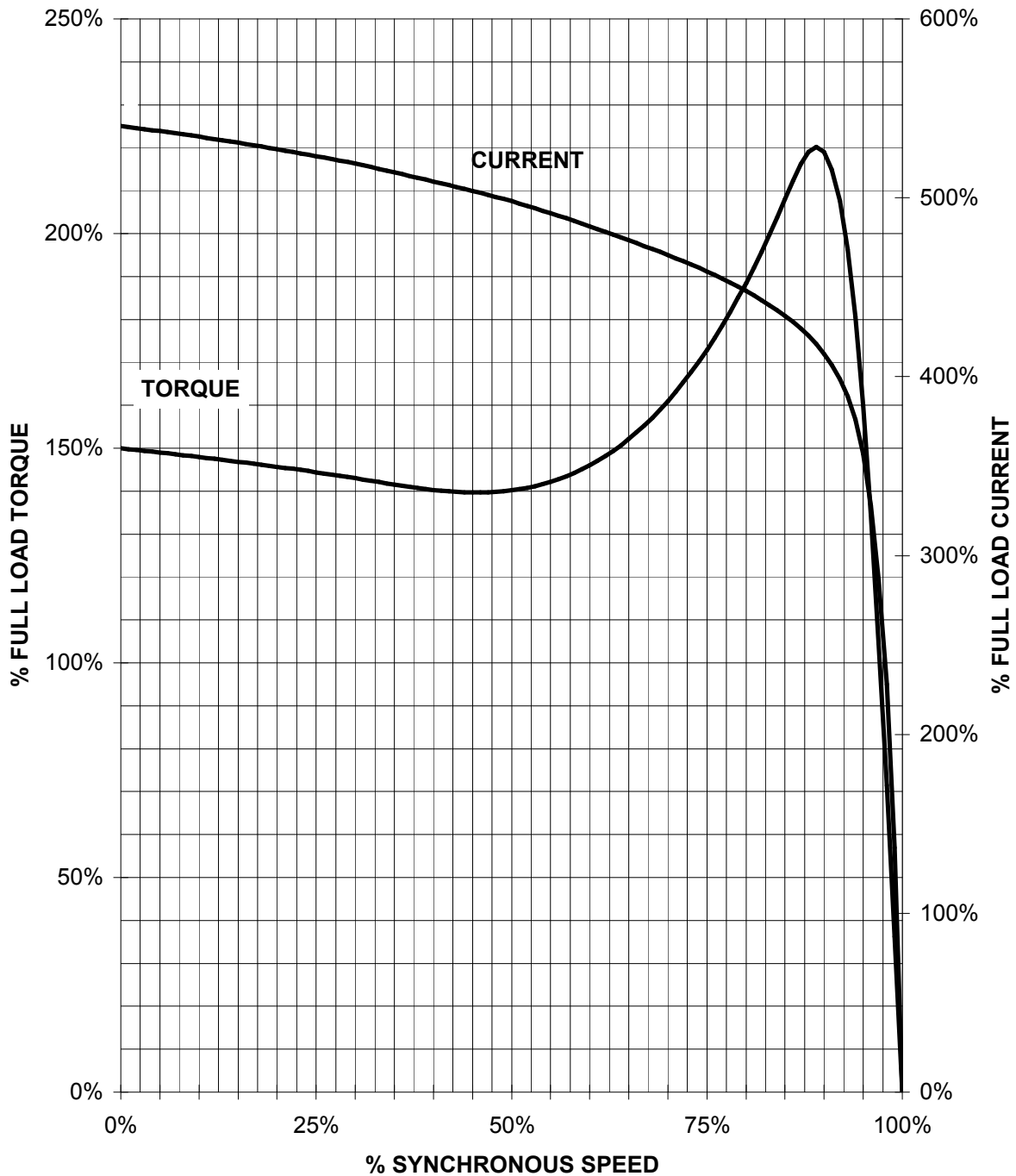


Tolerance	Surface	Material	Weight	Scale
F50GGFEE0FFE OEH	Author	ÖS	1.875	1:1
E	Creator	T a : ^ & @ } *		
	Approval			
	Department			
	Change Order	MLFB		
	Doc. State	I 000	Doc Type	
SIEMENS	Revision	Index RS	Item No	Paper Size OEH
© Siemens AG 2018	Project No	E	Doc No	1st Language ^
				2nd Language a^
			Ref No	E
				Sheet F of F

SIEMENS INDUSTRY, INC.

HP 10 VOLTS < 600V RPM 900 TYPE GP100
HZ 60 PHASE 3 FRAME 284T NEMA B

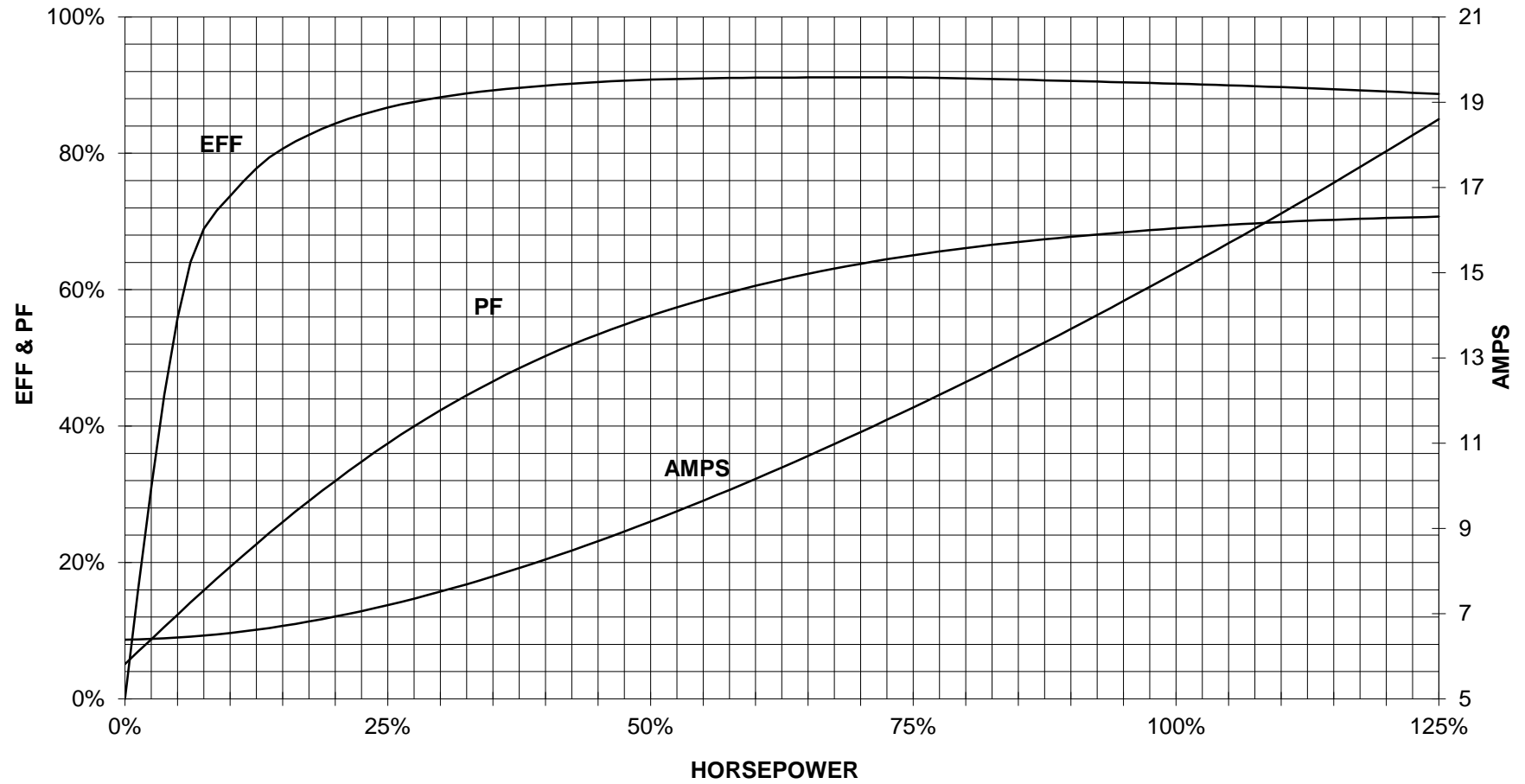
TORQUE & CURRENT VS. SPEED



CUSTOMER: _____ ORDER#: _____

10 HP 900 RPM 284T FRAME 460 VOLTS 3 PHASE NEMA DESIGN B

SIEMENS INDUSTRY, INC.
PERFORMANCE CURVE
GP100

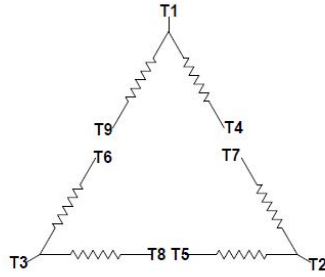


CUSTOMER _____ ORDER # _____ PO # _____

PERFORMANCE BASED ON DESIGN CALCULATIONS. SUBJECT TO CHANGE WITHOUT NOTICE.

REV. 1

Main terminal diagram



9 LEAD DELTA						
Volts	LINES			CONNECTED TOGETHER	CONN.	
	L1	L2	L3			
LOW	T1 T6	T7 T4	T8 T5	T3 T9		Δ Δ
HIGH	T1	T2	T3	T4 T7-T5 T8-T6 T9		Δ

responsible dep. DI MC LVM	technical reference	created by	approved by	Project
SIEMENS	document type Wiring Diagram	document status free		customer
	title 1LE2221-2CD11-6AA3	document number		
© Siemens AG 2019	rev. 01	creation date 12/03/2019	language en	Page 1/1