



## NEMA Motor Data

MLFB-Ordering data : 1LE2311-1AB21-4GA3

Client order no. :  
Order no. :  
Offer no. :  
Remarks :

Item no. :  
Consignment no. :  
Project :

<b>Nameplate Data</b>	<b>Mounting and motor protection</b>
-----------------------	--------------------------------------

Type: SD100 - NEMA Premium Efficiency Plus

HP	1.0	Rating	Cont.
Voltage	(14) 230/460V, 60Hz (Suitable for 208V)	Ins. Class	Class F (Standard)
Amps	3.0 / 1.5 A	S.F.	1.15
FL RPM	1775	Amb. Temp.	+40C TO -20C
FL Efficiency	86.5 %	Temp. Rise	Class B
FRAME	143TC	kVA Code	N
DE AFBMA	25BC02JP30	NEMA Des	B
ODE AFBMA	25BC02JP30	Mtr WT	81
60 Hertz	3 Ph TEFC	IP	55

Type of construction	( G ) Round body - C-Face
Motor protection	(A) Without Protection
Terminal box design	(3) F-1, Standard Floor Mount, T. Box

Bearing Data		
	DE	ODE
Bearing Size	6205 Z C3 S0	6205 Z C3 S0
Bearing Type	Ball Bearing	Ball Bearing
AFBMA	25BC02JP30	25BC02JP30

### Typical Performance Data

Load	No Load	1/2	3/4	Full Load	LRC
Efficiency		83.0 %	86.0 %	86.5 %	
Power Factor		53.0	65.0	74.0	
Current (A)	0.9 A	1.1 A	1.3 A	3.0 / 1.5 A	15.0 A
Inverter Duty	VT	20:1	CT	20:1	

### Mechanical Data

SAFE STALL TIME	HOT (s)	16	COLD (s)	20
Rtr wt (lbs)	16.82	Rtr WK2	0.24	
FLT (lb-ft)	3.0	LRT (%)	287	BDT (%) 467
Ext Load Inertia (WK2) Capability	5.8 lb-ft <sup>2</sup>			
Brake:	without			

### Typical Noise Data

A-weighted Sound	Octave Band Center Frequencies Hertz (Hz)								
Pressure Level	125	250	500	1000	2000	4000	8000	SPL	50
at 3 feet	0	37	40	49	45	37	31	SPwrL	62

### Wiring Connection Information

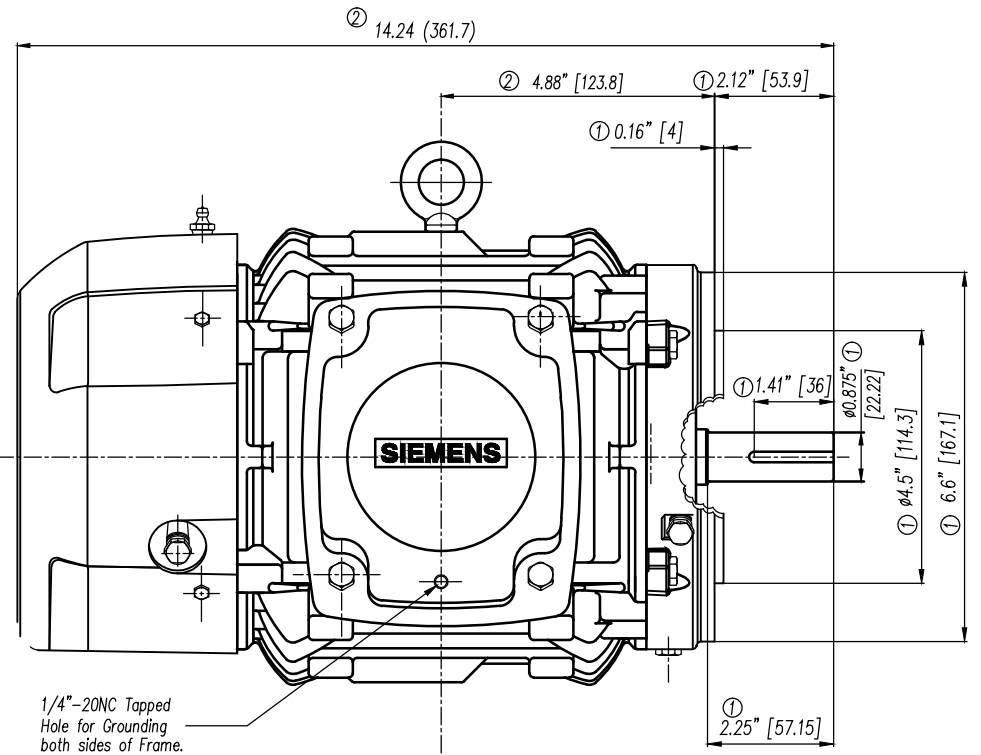
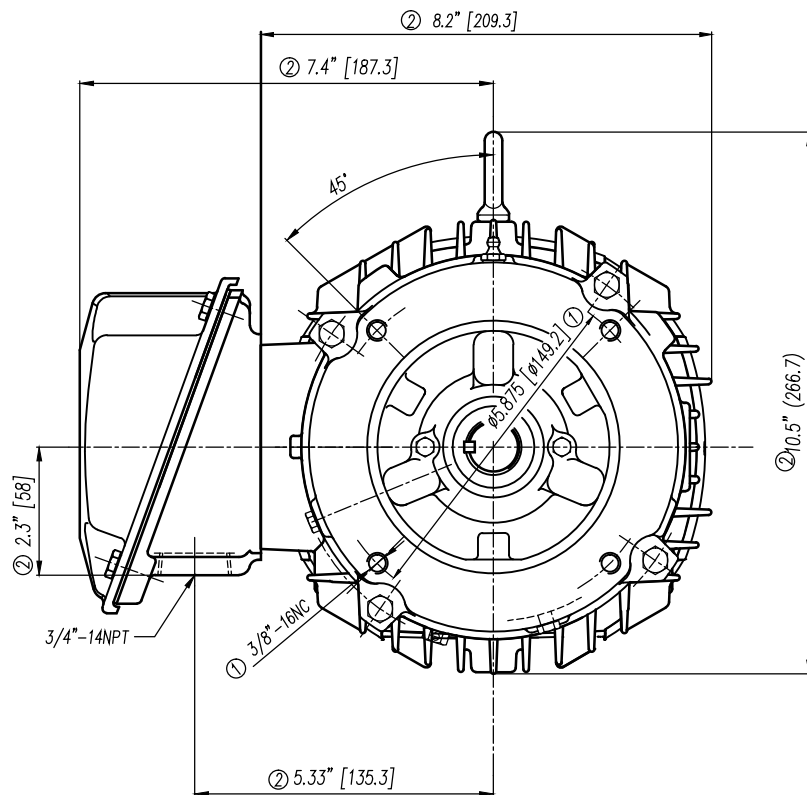
Description	3 PHASE - 9 LEAD - WYE					
Voltage	L1	L2	L3	Connected together		
LOW	T1 T7	T2 T8	T3 T9	T4 T5 T6 YY		
HIGH	T1	T2	T3	T4 T7-T5 T8-T6 T9 Y		

### Special design :

### Lubrication Information

Manufacturer	Mobil Polyrex EM or equal
Type	Polyurea (standard)
DE Capacity (oz.)	0.10
ODEnd Capacity (oz.)	0.10

Relubricate bearings every six months (more frequent if conditions require). See Instruction Manual.



① Tolerances According to NEMA Std.

② All these dimensions corresponding to assemblies and castings shall have a tolerance as per DIN standard 1686-GTB 19.

③ Not According to NEMA Std.

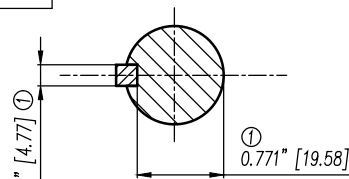
① Tolerancias acorde a NEMA Std.

② Todas estas dimensiones correspondientes a ensambles y fundición en bruto tendrán una tolerancia según DIN 1686-GTB-19

③ No Acorde a NEMA Std.

### CERTIFIED PRINT/CERTIFICACION

CUSTOMER/CLIENTE						
POR/ORDEN COMPRA#			SOB/ORDEN CLIENTE#			
IP	BPM	FRAME/ARM	TYPE/TIPO	VOLTS	PH/VAS.	HZ



Keyseat detail  
Detalle Cuñero

Tol. in mm. acc. to/Tol. en mm. según DIN-1686-GTB-19

Over/desde	to/hasta	±
---	18	± 4.5
18	30	± 4.7
30	50	± 5
50	80	± 5.5
80	120	± 6
120	180	± 6.5
180	250	± 7
250	315	± 7.5
315	400	± 8
400	500	± 8.5
500	630	± 9.5
630	800	± 10

European Projection/  
Proyeccion Europea

Dim. in inches/Dim. en pulg.

Drawn/Elab.	Date/Fecha	Name/Nombre
19/01/2015	R. Kaiser	
Check/Rev.		
Std.Ckd./Aut		

**SIEMENS**

GUADALAJARA FACTORY

a) Se cambió formato a Inglés-Español y se especificó tipos en los que aplica este dibujo.

a) Changed the format to English-Spanish and was specified in what kind of motors apply this drawing.

Outline/Dimensiones		Scale/Escala
New NEMA Motors		Sin W/O
Type/ SD10,SD100	143/145TCV Frame/Arm. Mexico	
Tipo: SD10 145TCV, SD100 143/145TCV	USA	

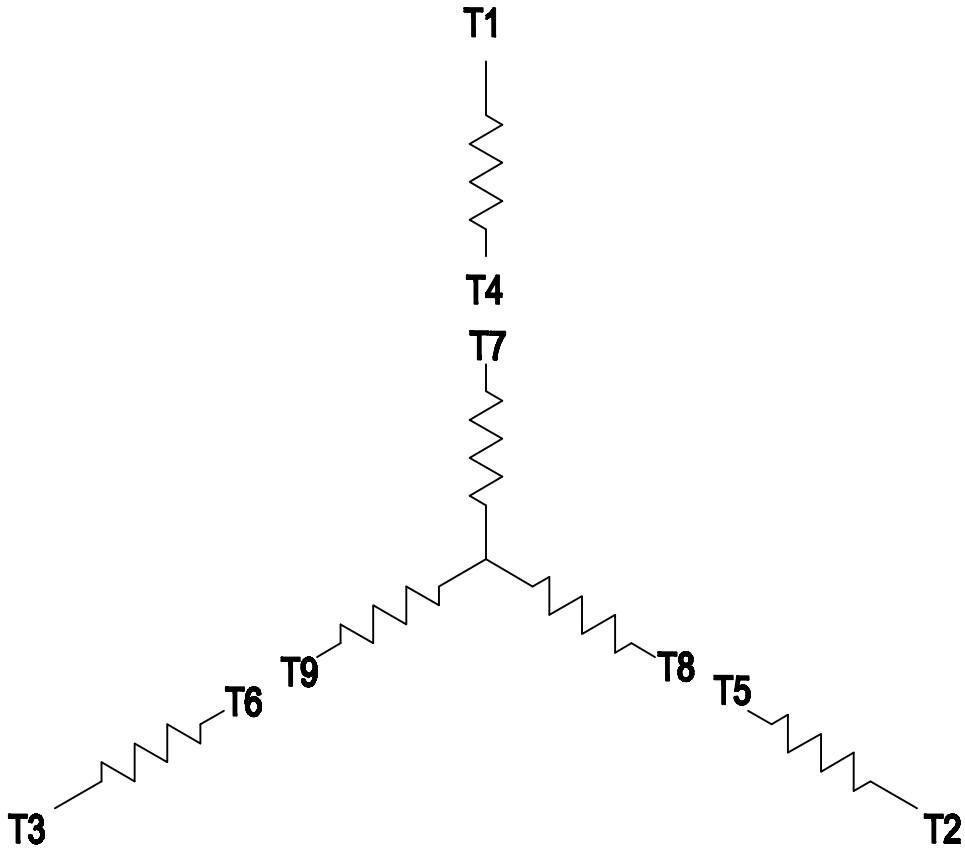
**3MSE 220 1598**

Ref. 3MSE2200842

Rep./ Sdo

### 3 PHASE - 9 LEADS - WYE

VOLTS	LINES			CONNECTED TOGETHER	CONN.
	L1	L2	L3		
LOW	T1 T7	T2 T8	T3 T9	T4 T5 T6	Y Y
HIGH	T1	T2	T3	T4 T7-T5 T8-T6 T9	Y



THIS IS A CAD DRAWING  
DO NOT MAKE MANUAL CHANGES

01 | 09-27-07

TYPE

-CONFIDENTIAL-

PROPERTY OF

Siemens Energy & Automation, Inc.  
Industrial Motor Division - Little Rock, AR

FRAME

HP

NAME

WIRING DIAGRAM

VOLTS

RPM

HZ

PH

3

Customer

PO #

SO #

DRAWN 9.24.07

DATE

JRH

CHECKED

DATE

APP

DATE

SHEET

1 OF 1

Sim. To

PART NO.

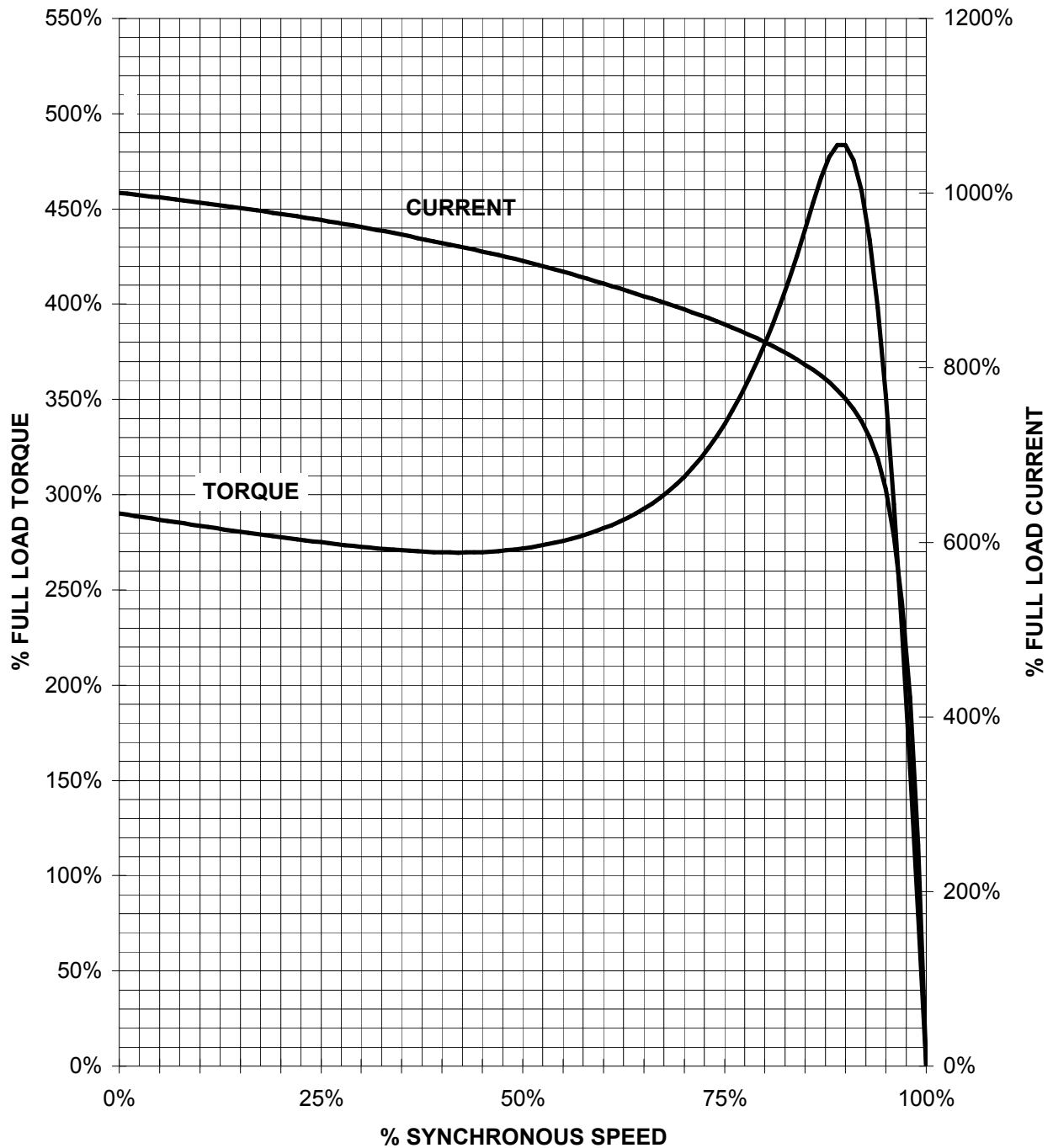
51-382-114-501

A

# SIEMENS INDUSTRY, INC.

HP 1      VOLTS < 600V      RPM 1800      TYPE SD100 NPP  
HZ 60      PHASE 3      FRAME 143T      NEMA B

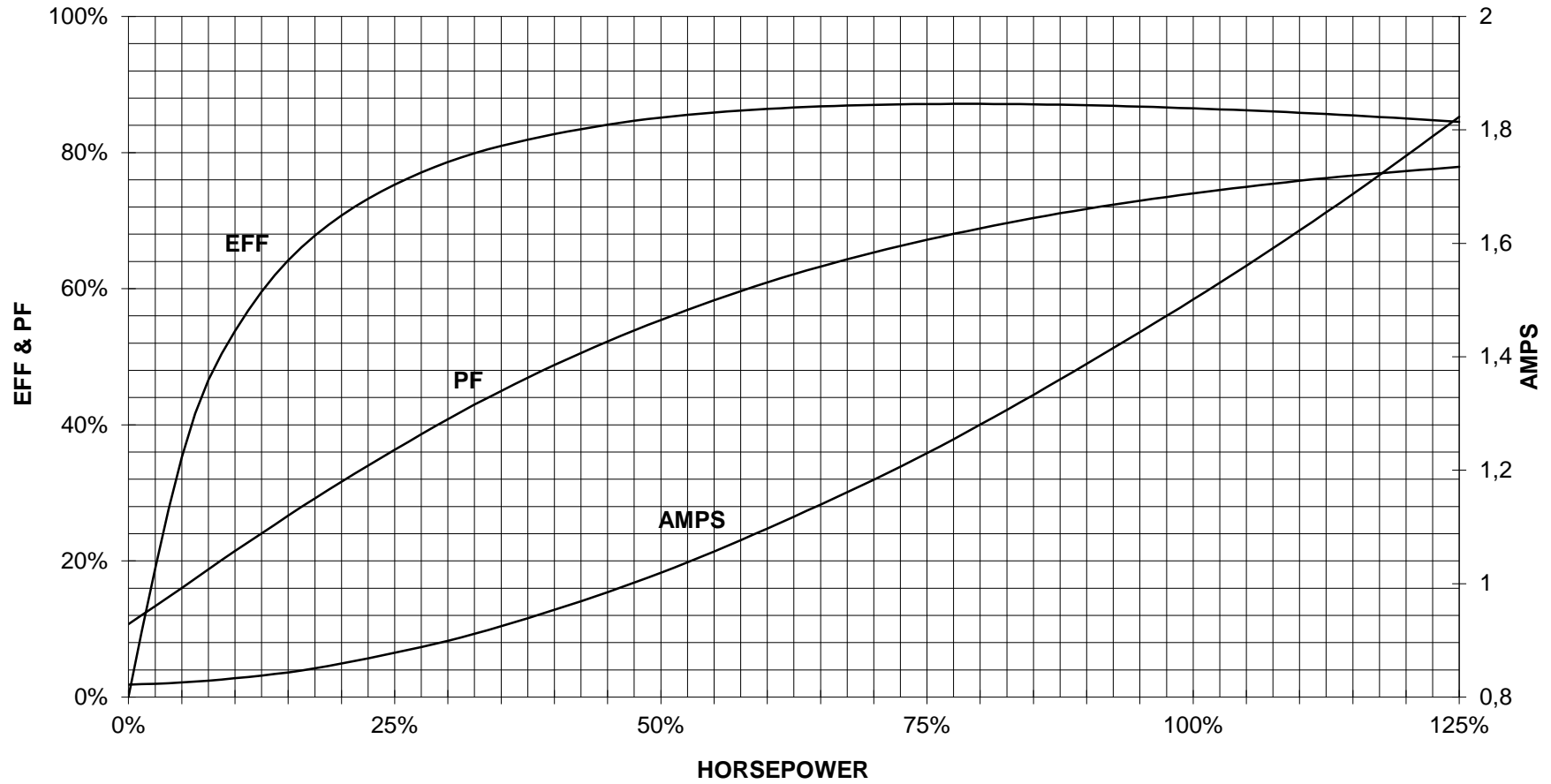
## TORQUE & CURRENT VS. SPEED



CUSTOMER: \_\_\_\_\_ ORDER#: \_\_\_\_\_

1 HP 1800 RPM 143T FRAME 460 VOLTS 3 PHASE NEMA DESIGN B

**SIEMENS INDUSTRY, INC.**  
**PERFORMANCE CURVE**  
**SD100 NPP**



CUSTOMER \_\_\_\_\_ ORDER # \_\_\_\_\_ PO # \_\_\_\_\_

PERFORMANCE BASED ON DESIGN CALCULATIONS. SUBJECT TO CHANGE WITHOUT NOTICE.

REV. 1