



## NEMA Motor Data

MLFB-Ordering data : 1LE2311-1AC31-4AA3

Client order no. :  
Order no. :  
Offer no. :  
Remarks :

Item no. :  
Consignment no. :  
Project :

<b>Nameplate Data</b>	<b>Mounting and motor protection</b>
-----------------------	--------------------------------------

Type: SD100 - NEMA Premium Efficiency Plus

HP	1.0	Rating	Cont.
Voltage	(14) 230/460V, 60Hz (Suitable for 208V)	Ins. Class	Class F (Standard)
Amps	3.2 / 1.6 A	S.F.	1.15
FL RPM	1175	Amb. Temp.	+40C TO -20C
FL Efficiency	84.0 %	Temp. Rise	Class B
FRAME	145T	kVA Code	L
DE AFBMA	25BC02JP30	NEMA Des	B
ODE AFBMA	25BC02JP30	Mtr WT	81
60 Hertz	3 Ph TEFC	IP	55

Type of construction	( A ) Foot mounted - End shield
Motor protection	(A) Without Protection
Terminal box design	(3) F-1, Standard Floor Mount, T. Box

### Bearing Data

	DE	ODE
Bearing Size	6205 Z C3 S0	6205 Z C3 S0
Bearing Type	Ball Bearing	Ball Bearing
AFBMA	25BC02JP30	25BC02JP30

### Typical Performance Data

Load	No Load	1/2	3/4	Full Load	LRC
Efficiency		80.5 %	83.5 %	84.0 %	
Power Factor		49.0	61.0	70.0	
Current (A)	1.0 A	1.2 A	1.4 A	3.2 / 1.6 A	12.0 A
Inverter Duty	VT	20:1	CT	4:1	

### Mechanical Data

SAFE STALL TIME	HOT (s)	19	COLD (s)	27
Rtr wt (lbs)	16.91	Rtr WK2	0.20	
FLT (lb-ft)	4.5	LRT (%)	209	BDT (%) 378
Ext Load Inertia (WK2) Capability	15.0 lb-ft <sup>2</sup>			
Brake:	without			

### Typical Noise Data

A-weighted Sound	Octave Band Center Frequencies Hertz (Hz)								
Pressure Level	125	250	500	1000	2000	4000	8000	SPL	50
at 3 feet	26	31	43	47	40	36	31	SPwrL	58

### Wiring Connection Information

Description	3 PHASE - 9 LEAD - WYE					
Voltage	L1	L2	L3	Connected together		
LOW	T1 T7	T2 T8	T3 T9	T4 T5 T6 YY		
HIGH	T1	T2	T3	T4 T7-T5 T8-T6 T9 Y		

### Special design :

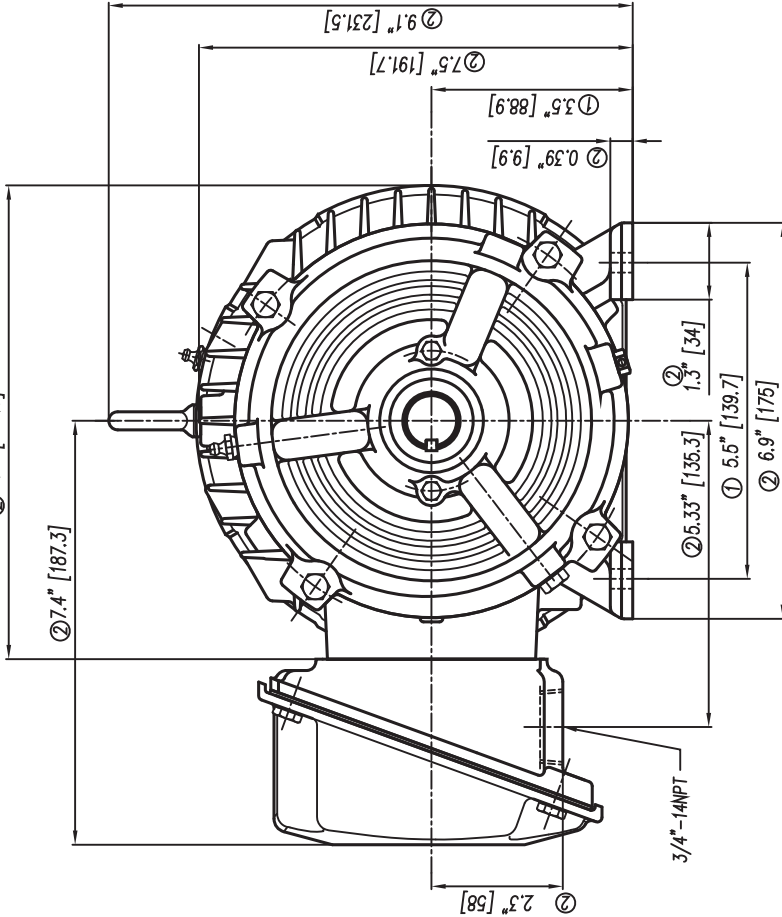
### Lubrication Information

Manufacturer	Mobil Polyrex EM or equal
Type	Polyurea (standard)
DE Capacity (oz.)	0.10
ODEnd Capacity (oz.)	0.10

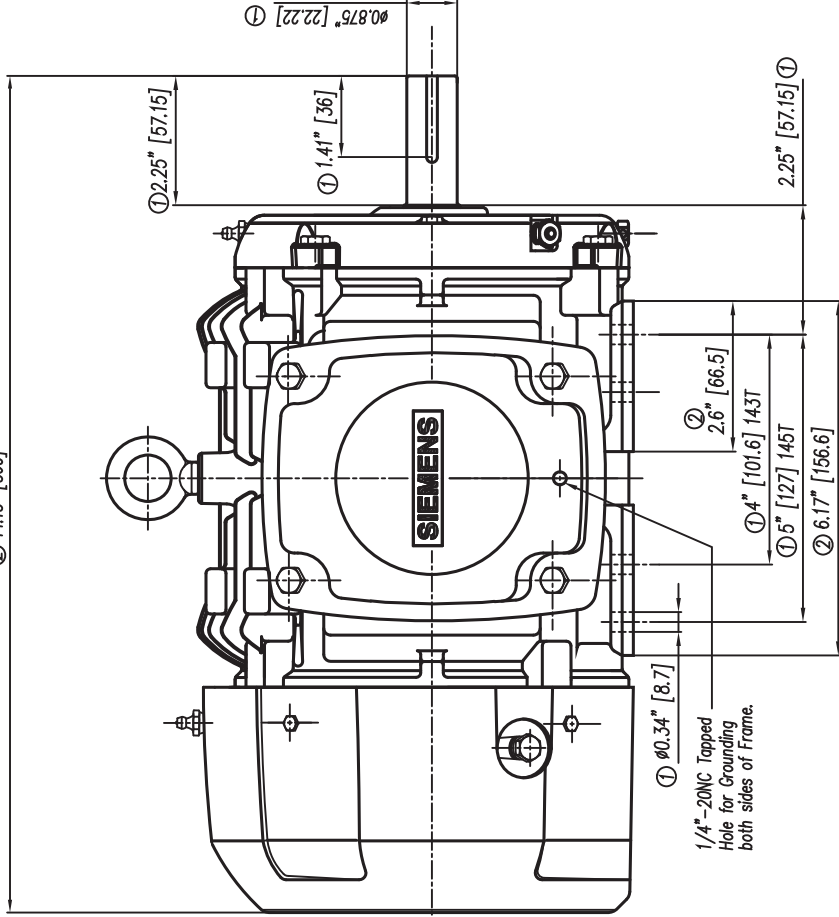
Relubricate bearings every six months (more frequent if conditions require). See Instruction Manual.

② 8.2" [209.3]

② 7.4" [187.3]



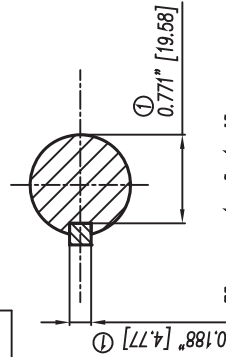
② 14.15" [360]



① 0.875" [22.22]

- ① Tolerancias According to NEMA Std.
- ② All these dimensions corresponding to assemblies and castings shall have a tolerance as per DIN standard 1686-GTB 19.
- ③ Not According to NEMA Std.

- ① Tolerancias acorde a NEMA Std.
- ② Todas estas dimensiones correspondientes a ensamblajes y fundición en bruto tendrán una tolerancia según DIN 1686-GTB-19
- ③ No Acorde a NEMA Std.



Keyseat detail  
Detalle Cuñero

Tol. in mm. ac. to/Tol. en mm. según DIN-1686-GTB-19		European Projection/Proyección Europea		Date/Fecha		Scale/Escala	
Over/desde	to/hasta	± 4.5	± 4.7	28/02/08	28/02/08	1:1	1:1
---	18	± 4.5	± 4.7	Drawn/Elab.	28/02/08	SD10	SD10
18	30	± 4.5	± 5	Check/Rev.		SD100	SD100
30	50	± 5	± 5.5	Stat.Chd./Aut.		143/145T	143/145T
50	80	± 5.5	± 6			SD100 143/145T	SD100 143/145T
80	120	± 6	± 6.5				
120	180	± 6.5	± 7				
180	250	± 7	± 7.5				
250	315	± 7.5	± 8				
315	400	± 8	± 8.5				
400	500	± 8.5	± 9				
500	630	± 9	± 9.5				
630	800	± 9.5	± 10				

① Se cambio formato a Ingles-Español y se especificó tipos en los que aplica este dibujo.  
② Changed the format to English-Spanish and was specified in What kind of motors apply this drawing.

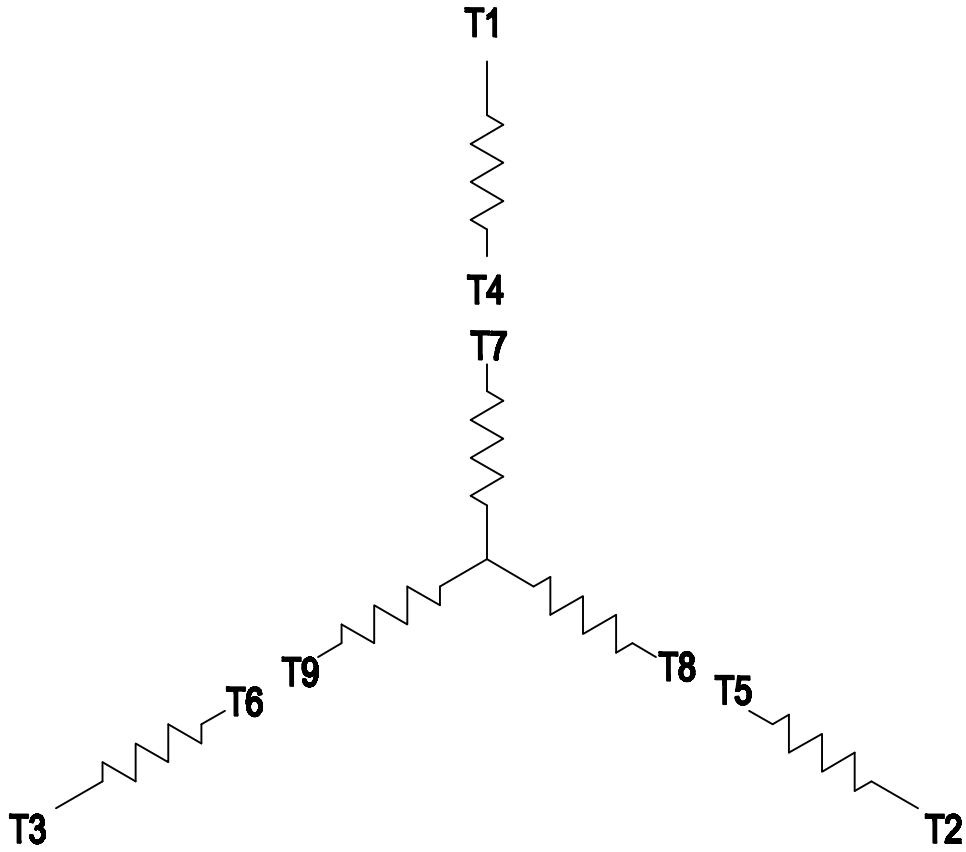
**Outline/Dimensiones**  
New NEMA Motors  
SD10, SD100, 143/145T Frame/Arm. Mexico USA  
SD10 145T, SD100 143/145T

**SIEMENS**  
GUADALAJARA FACTORY  
3MSE 220 0840a  
Ref. Rep./ 3MSE 220 0840

<b>CERTIFIED PRINT/CERTIFICACION</b>			
FOR/USO PARA	FOR/USO PARA	FOR/USO PARA	FOR/USO PARA
IP	TYPE/TP	WELLS	RE

### 3 PHASE - 9 LEADS - WYE

VOLTS	LINES			CONNECTED TOGETHER	CONN.
	L1	L2	L3		
LOW	T1 T7	T2 T8	T3 T9	T4 T5 T6	Y Y
HIGH	T1	T2	T3	T4 T7-T5 T8-T6 T9	Y



THIS IS A CAD DRAWING  
DO NOT MAKE MANUAL CHANGES

01 | 09-27-07

TYPE

-CONFIDENTIAL-

PROPERTY OF

Siemens Energy & Automation, Inc.  
Industrial Motor Division - Little Rock, AR

FRAME

HP

NAME

WIRING DIAGRAM

VOLTS

RPM

HZ

PH

3

Customer

PO #

SO #

DRAWN

9.24.07

DATE

JRH

CHECKED

DATE

APP

DATE

SHEET

1 OF 1

Sim. To

PART NO.

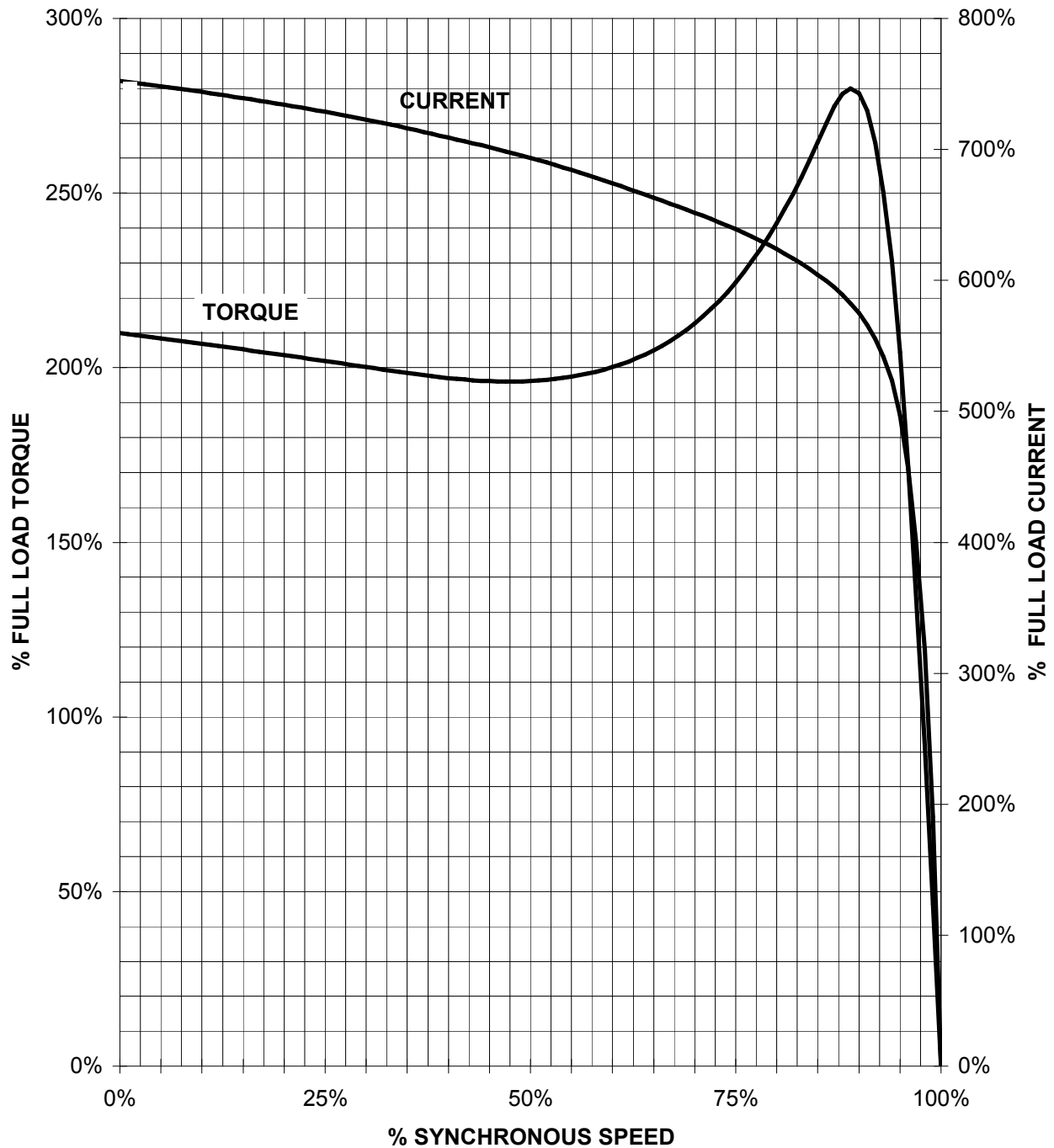
51-382-114-501

A

# SIEMENS INDUSTRY, INC.

HP 1 VOLTS < 600V RPM 1200 TYPE SD100 NPP  
HZ 60 PHASE 3 FRAME 145T NEMA B

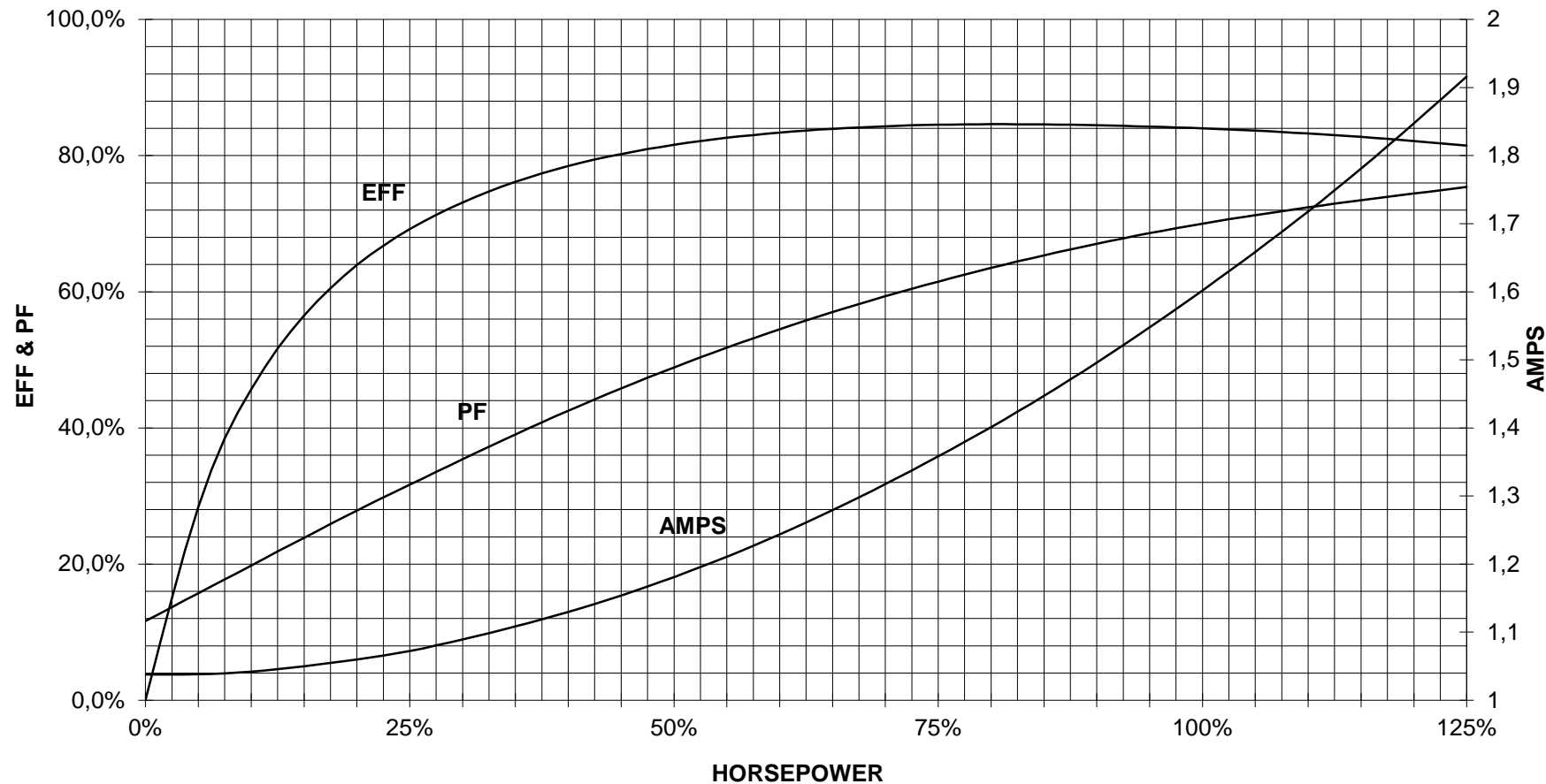
## TORQUE & CURRENT VS. SPEED



CUSTOMER: \_\_\_\_\_ ORDER#: \_\_\_\_\_

1 HP 1200 RPM 145T FRAME 460 VOLTS 3 PHASE NEMA DESIGN B

**SIEMENS INDUSTRY, INC.**  
**PERFORMANCE CURVE**  
**SD100 NPP**



CUSTOMER \_\_\_\_\_ ORDER # \_\_\_\_\_ PO # \_\_\_\_\_

PERFORMANCE BASED ON DESIGN CALCULATIONS. SUBJECT TO CHANGE WITHOUT NOTICE.

REV. 1