



## NEMA Motor Data

MLFB-Ordering data : 1LE2311-2BC11-4GA3

Client order no. :  
 Order no. :  
 Offer no. :  
 Remarks :

Item no. :  
 Consignment no. :  
 Project :

Nameplate Data	Mounting and motor protection
----------------	-------------------------------

Type: SD100 - NEMA Premium Efficiency Plus

HP	7.5	Rating	Cont.
Voltage	(14) 230/460V, 60Hz (Suitable for 208V)	Ins. Class	Class F (Standard)
Amps	21.0 / 10.5 A	S.F.	1.15
FL RPM	1180	Amb. Temp.	+40C TO -20C
FL Efficiency	92.4 %	Temp. Rise	Class B
FRAME	254TC	kVA Code	H
DE AFBMA	45BC03JP30	NEMA Des	B
ODE AFBMA	45BC03JP30	Mtr WT	323
60 Hertz	3 Ph TEFC	IP	55

Type of construction (G) Round body - C-Face  
 Motor protection (A) Without Protection  
 Terminal box design (3) F-1, Standard Floor Mount, T. Box

Bearing Data		
--------------	--	--

	DE	ODE
Bearing Size	6309 Z C3 S0	6309 Z C3 S0
Bearing Type	Ball Bearing	Ball Bearing
AFBMA	45BC03JP30	45BC03JP30

Typical Performance Data					
--------------------------	--	--	--	--	--

Load	No Load	1/2	3/4	Full Load	LRC
Efficiency		91.5 %	92.5 %	92.4 %	
Power Factor		57.0	67.0	76.0	
Current (A)	5.0 A	6.7 A	8.5 A	21.0 / 10.5	63.0 A
Inverter Duty	VT	20:1	CT	4:1	

Mechanical Data				
-----------------	--	--	--	--

SAFE STALL TIME HOT (s) 66 COLD (s) 92  
 Rtr wt (lbs) 84.85 Rtr WK2 2.88  
 FLT (lb-ft) 33.0 LRT (%) 191 BDT (%) 233  
 Ext Load Inertia (WK2) Capability 104.0 lb-ft<sup>2</sup>  
 Brake: without

Typical Noise Data									
--------------------	--	--	--	--	--	--	--	--	--

A-weighted Sound	Octave Band Center Frequencies Hertz (Hz)								
Pressure Level	125	250	500	1000	2000	4000	8000	SPL	55
at 3 feet	21	40	42	51	46	51	28	SPwrL	67

Wiring Connection Information					
-------------------------------	--	--	--	--	--

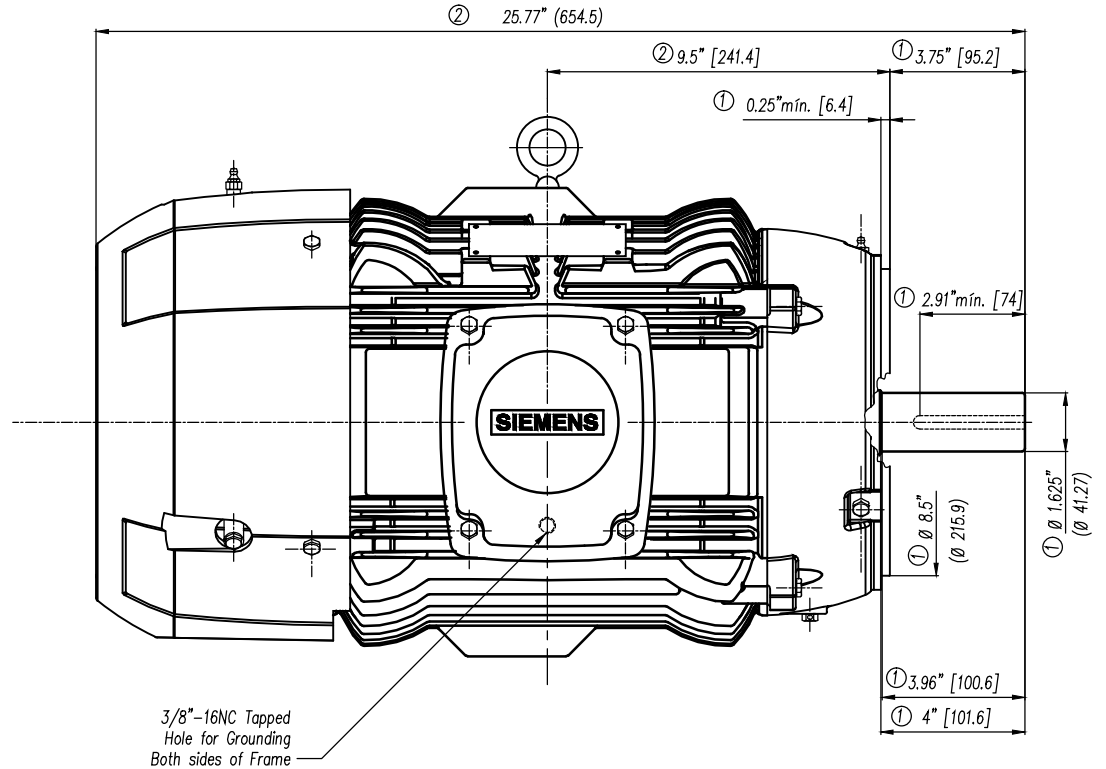
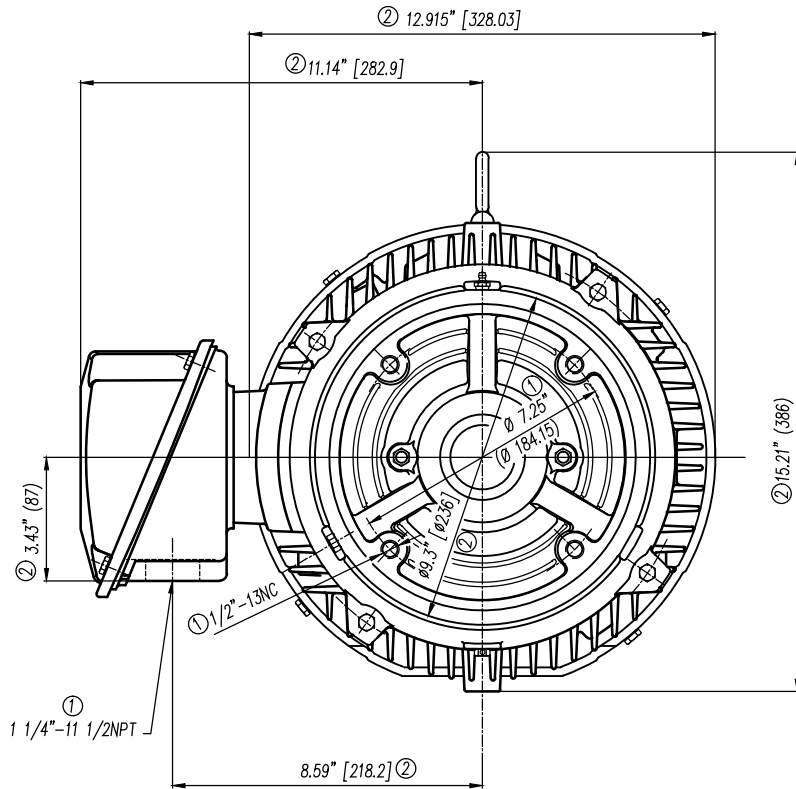
Description	3 PHASE - 9 LEAD - WYE				
Voltage	L1	L2	L3	Connected together	
LOW	T1 T7	T2 T8	T3 T9	T4 T5 T6 YY	
HIGH	T1	T2	T3	T4 T7-T5 T8-T6 T9 Y	

Special design :
------------------

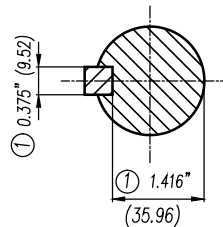
Lubrication Information	
-------------------------	--

Manufacturer Mobil Polyrex EM or equal  
 Type Polyurea (standard)  
 DE Capacity (oz.) 0.50  
 ODEnd Capacity (oz.) 0.50

Relubricate bearings every six months (more frequent if conditions require). See Instruction Manual.



- |   |  |
|---|--|
| ① Tolerances According to NEMA Std.   | ① Tolerancias acorde a NEMA Std.   |
| ② All these dimensions corresponding to assemblies and castings shall have a tolerance as per DIN standard 1686-GTB 19. | ② Todas estas dimensiones correspondientes a ensambles y fundición en bruto tendrán una tolerancia según DIN 1686-GTB-19 |
| ③ Not According to NEMA Std.  | ③ No Acorde a NEMA Std.  |



Keyseat detail  
Detalle Cuñero

CERTIFIED PRINT/CERTIFICACION						
CUSTOMER/CLIENTE						
POB/ORDEN COMPRA#			SOB/ORDEN CLIENTE#			
IP	RPM	FRAME/ARM	TYPE/TIPO	VOLTS	PH/FASES	HZ

Tol. in mm. acc. to/Tol. en mm. según DIN-1686-GTB-19

Over/desde	to/hasta	±
---	18	± 4.5
18	30	± 4.7
30	50	± 5
50	80	± 5.5
80	120	± 6
120	180	± 6.5
180	250	± 7
250	315	± 7.5
315	400	± 8
400	500	± 8.5
500	630	± 9.5
630	800	± 10

European Projection/  
Proyeccion Europea

Dim. in inches/Dim. en pulg.

Date/Fecha: 19/01/16  
Name/Nombre: R. Kaiser  
Drawn/Etab.  
Check/Rev.  
Std.Ckd./Aut.

a) Se cambió formato a Inglés-Español y se especificó tipos en los que aplica este dibujo.

a) Changed the format to English-Spanish and was specified in what kind of motors apply this drawing.

Outline/Dimensiones  
New NEMA Motors  
Type/ SD10, SD100 254/256TC S/P Arm. Mexico  
Tipo: SD10 256TCV, SD100 254/256TC Frame Wo/F USA

Scale/  
Escala  
Sin  
W/O

**SIEMENS**  
GUADALAJARA FACTORY

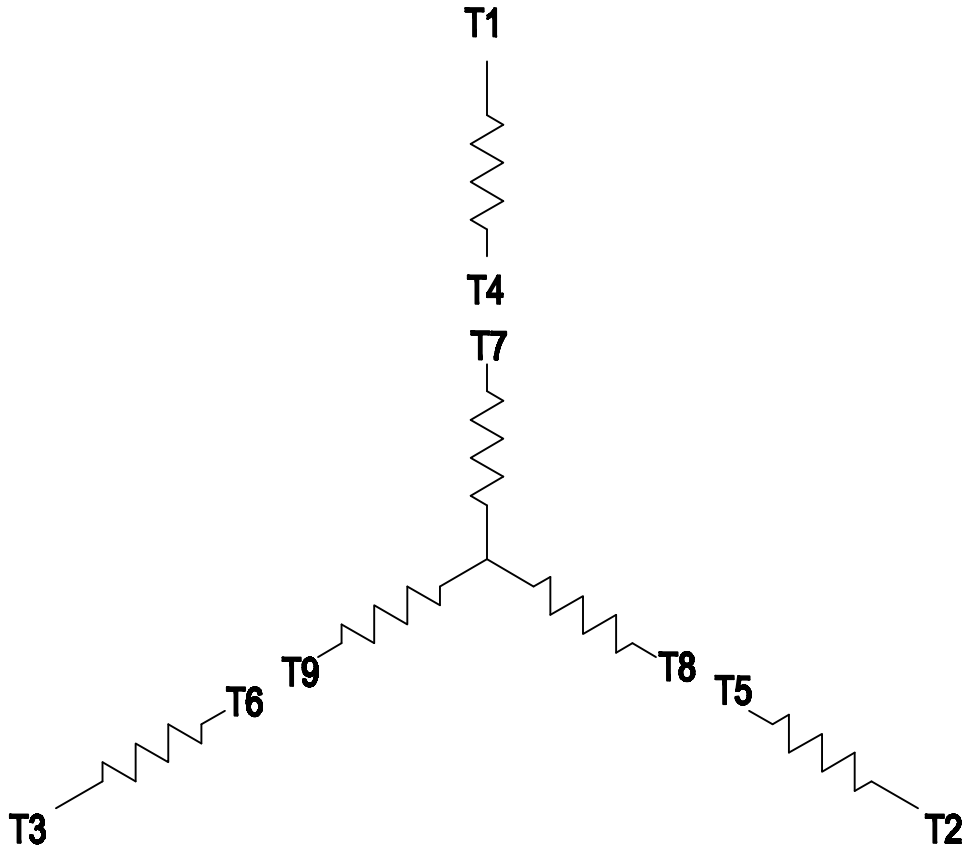
**3MSE 223 1519**

Ref. 3MSE 223 0841  
3MSE 223 0842

Rep/  
Sdo

### 3 PHASE - 9 LEADS - WYE

VOLTS	LINES			CONNECTED TOGETHER	CONN.
	L1	L2	L3		
LOW	T1 T7	T2 T8	T3 T9	T4 T5 T6	Y Y
HIGH	T1	T2	T3	T4 T7-T5 T8-T6 T9	Y



THIS IS A CAD DRAWING  
DO NOT MAKE MANUAL CHANGES

01 | 09-27-07

TYPE

-CONFIDENTIAL-

PROPERTY OF

Siemens Energy & Automation, Inc.  
Industrial Motor Division - Little Rock, AR

FRAME

HP

NAME

WIRING DIAGRAM

VOLTS

RPM

HZ

PH

3

Customer

PO #

SO #

DRAWN

9.24.07

DATE

JRH

CHECKED

DATE

APP

DATE

SHEET

1 OF 1

Sim. To

PART NO.

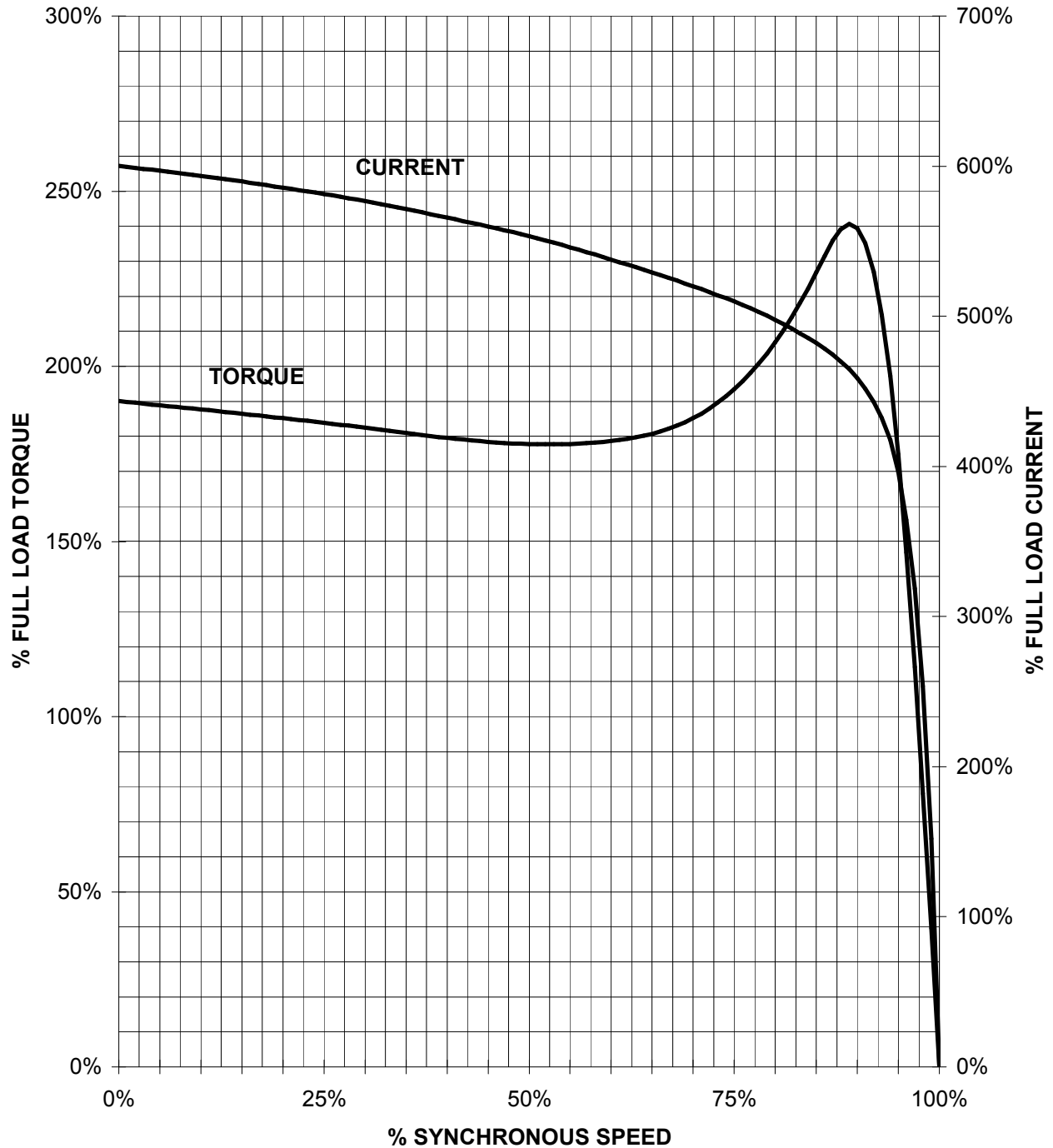
51-382-114-501

A

# SIEMENS INDUSTRY, INC.

HP 7,5    VOLTS < 600V    RPM 1200    TYPE SD100 NPP  
HZ 60    PHASE 3    FRAME 254T    NEMA B

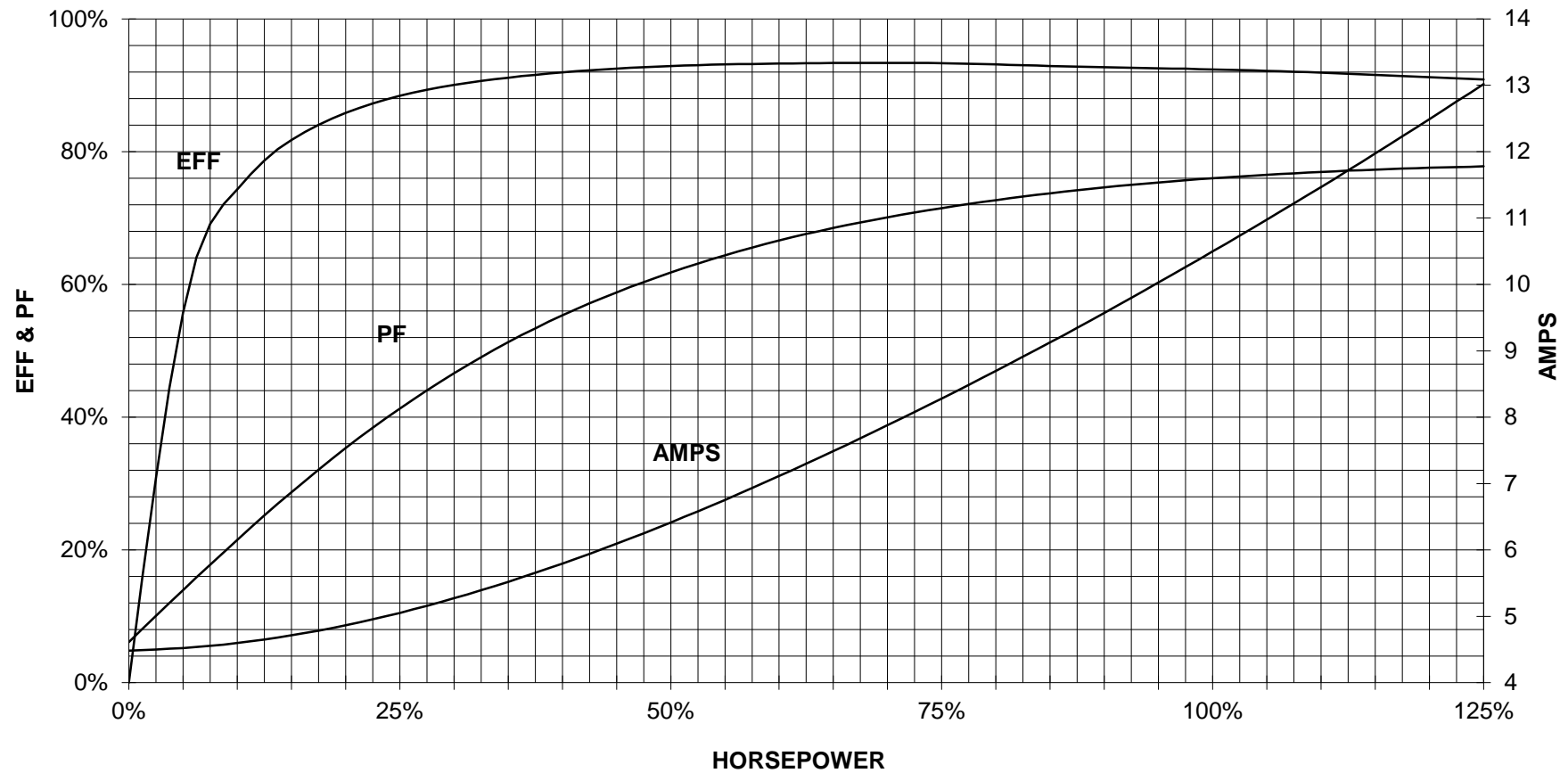
## TORQUE & CURRENT VS. SPEED



CUSTOMER: \_\_\_\_\_ ORDER#: \_\_\_\_\_

7.5 HP 1200 RPM 254T FRAME 460 VOLTS 3 PHASE NEMA DESIGN B

**SIEMENS INDUSTRY, INC.**  
**PERFORMANCE CURVE**  
**SD100 NPP**



CUSTOMER \_\_\_\_\_ ORDER # \_\_\_\_\_ PO # \_\_\_\_\_

PERFORMANCE BASED ON DESIGN CALCULATIONS. SUBJECT TO CHANGE WITHOUT NOTICE.

REV. 1