



NEMA Motor Data

MLFB-Ordering data : 1LE2411-1CB11-2AA3

Client order no. :
Order no. :
Offer no. :
Remarks :

Item no. :
Consignment no. :
Project :

Nameplate Data	Mounting and motor protection
----------------	-------------------------------

Type: SD100 IEEE841 - NEMA Premium Efficiency Plus			
HP	3.0	Rating	Cont.
Voltage	(12) 460V STD, 60Hz	Ins. Class	Class F (Standard)
Amps	4.0 A	S.F.	1.15
FL RPM	1770	Amb. Temp.	+40C TO -20C
FL Efficiency	90.2 %	Temp. Rise	Class B
FRAME	182T	kVA Code	K
DE AFBMA	30BC02JP30	NEMA Des	B
ODE AFBMA	30BC02JP30	Mtr WT	105
60 Hertz	3 Ph	TEFC	IP 55

Type of construction	(A) Foot mounted - End shield
Motor protection	(A) Without Protection
Terminal box design	(3) F-1, Standard Floor Mount, T. Box

Bearing Data		
--------------	--	--

	DE	ODE
Bearing Size	6206 Z C3 S0	6206 Z C3 S0
Bearing Type	Ball Bearing	Ball Bearing
AFBMA	30BC02JP30	30BC02JP30

Typical Performance Data					
--------------------------	--	--	--	--	--

Load	No Load	1/2	3/4	Full Load	LRC
Efficiency		88.5 %	90.0 %	90.2 %	
Power Factor		63.0	73.0	79.0	
Current (A)	1.8 A	2.5 A	3.2 A	4.0 A	33.0 A
Inverter Duty	VT	20:1	CT	20:1	

Mechanical Data				
-----------------	--	--	--	--

SAFE STALL TIME	HOT (s)	31	COLD (s)	45
Rtr wt (lbs)	24.86	Rtr WK2	0.37	
FLT (lb-ft)	8.9	LRT (%)	225	BDT (%) 393
Ext Load Inertia (WK2) Capability	17.0 lb-ft ²			
Brake:	without			

Typical Noise Data										
--------------------	--	--	--	--	--	--	--	--	--	--

A-weighted Sound	Octave Band Center Frequencies Hertz (Hz)									
Pressure Level	125	250	500	1000	2000	4000	8000	SPL	57	
at 3 feet	0	42	46	54	49	43	32	SPwrL	67	

Wiring Connection Information					
-------------------------------	--	--	--	--	--

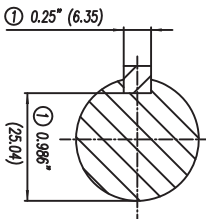
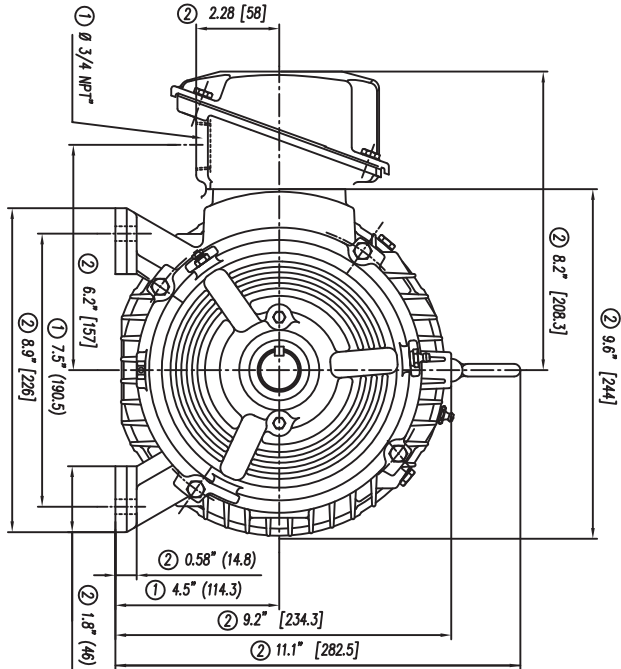
Description	3 PHASE - 3 LEAD - WYE				
Voltage	L1	L2	L3	Connected together	
-----	-----	-----	-----	-----	-
-----	T1	T2	T3	-----	Y

Special design :

Lubrication Information	
-------------------------	--

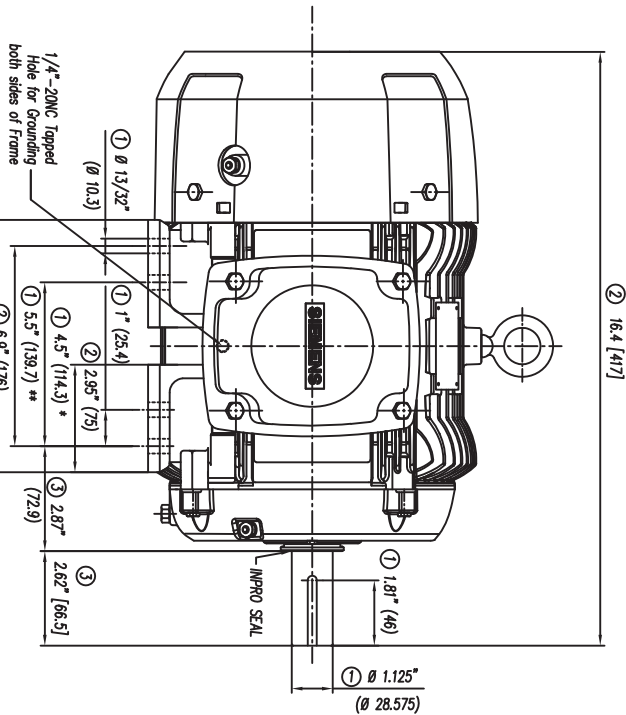
Manufacturer	Mobil Polyrex EM or equal
Type	Polyurea (standard)
DE Capacity (oz.)	0.20
ODEnd Capacity (oz.)	0.20

Relubricate bearings every six months (more frequent if conditions require). See Instruction Manual.



Keyseat detail

CERTIFIED PRINT			
DESIGNER			
APP	398	DATE	
REV	FRAGE	DATE	



- ① Tolerances according to NEMA Std.
- ② All these dimensions corresponding to assemblies and castings shall have a tolerance as per DIN standard 1686-GTB 19.
- ③ Not according to NEMA Std.

* Arm 182T
** Arm 184T

Tolerance in mm according to DIN-1686-GTB-19	Quantity	04 03 02 01
to 18	± 4.5	
Over 18 to 30	± 4.7	
Over 30 to 50	± 5	
Over 50 to 80	± 5.5	
Over 80 to 120	± 6	
Over 120 to 180	± 6.5	
Over 180 to 250	± 7	
Over 250 to 315	± 7.5	
Over 315 to 400	± 8	
Over 400 to 500	± 8.5	
Over 500 to 630	± 9.5	
Over 630 to 800	± 10	

Parts and Measure	Quantity	Remark
European Projection		
Dimensions in inches		
Date	Name	
06.02.2005	L. ZERVINO	
Drawn		
Checked		
Std Cnd		
Dimension Drawing		
Type: ILE2 S0100 IEE 182/184T FRAME	NEMA IBSB-441	Scale W/O
	2.8 Pol.	
SIEMENS	3MSE 221 0845	2 / 2
GUADALAJARA FACTORY	Replace	

2

1

B

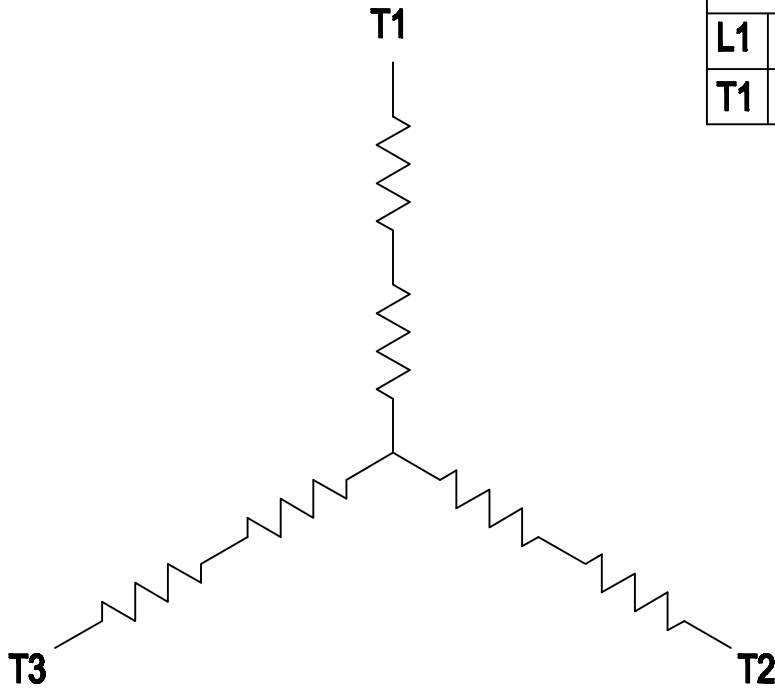
B

A

A

3 PHASE - 3 LEADS - WYE

LINES			CONN.
L1	L2	L3	
T1	T2	T3	Y



THIS IS A CAD DRAWING
DO NOT MAKE MANUAL CHANGES

01 | 09-27-07

TYPE

-CONFIDENTIAL-

PROPERTY OF

Siemens Energy & Automation, Inc.
Industrial Motor Division - Little Rock, AR

FRAME

HP

NAME

WIRING DIAGRAM

VOLTS

RPM

HZ

PH

3

Customer

PO #

SO #

DRAWN 9.24.07 DATE JRH

CHECKED DATE

APP DATE

SHEET

1 OF 1

Sim. To

PART NO.

51-382-114-503

A

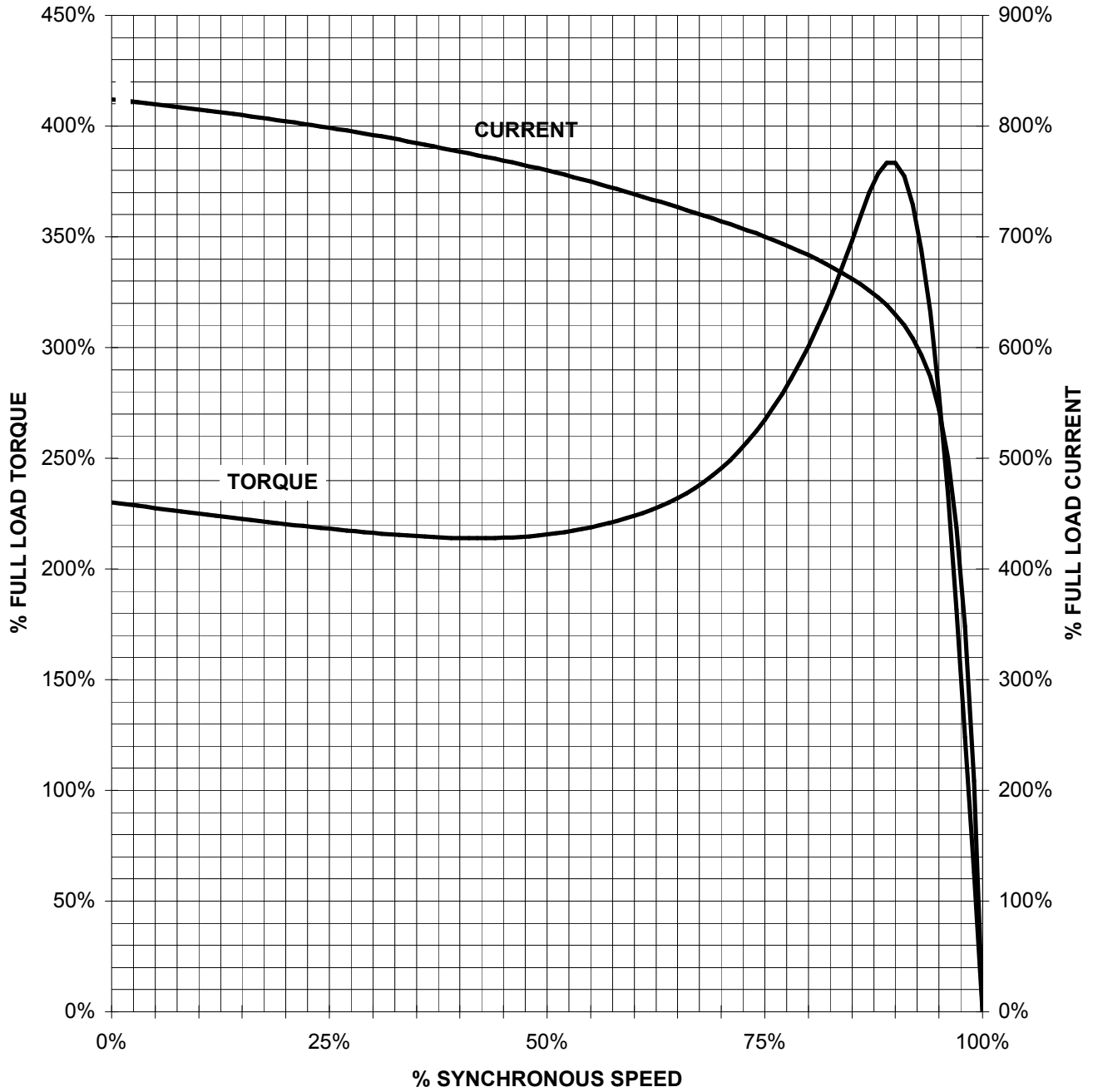
2

1

SIEMENS INDUSTRY, INC.

HP 3 VOLTS < 600V RPM 1800 TYPE SD100 IEEE841 NPP
HZ 60 PHASE 3 FRAME 182T NEMA B

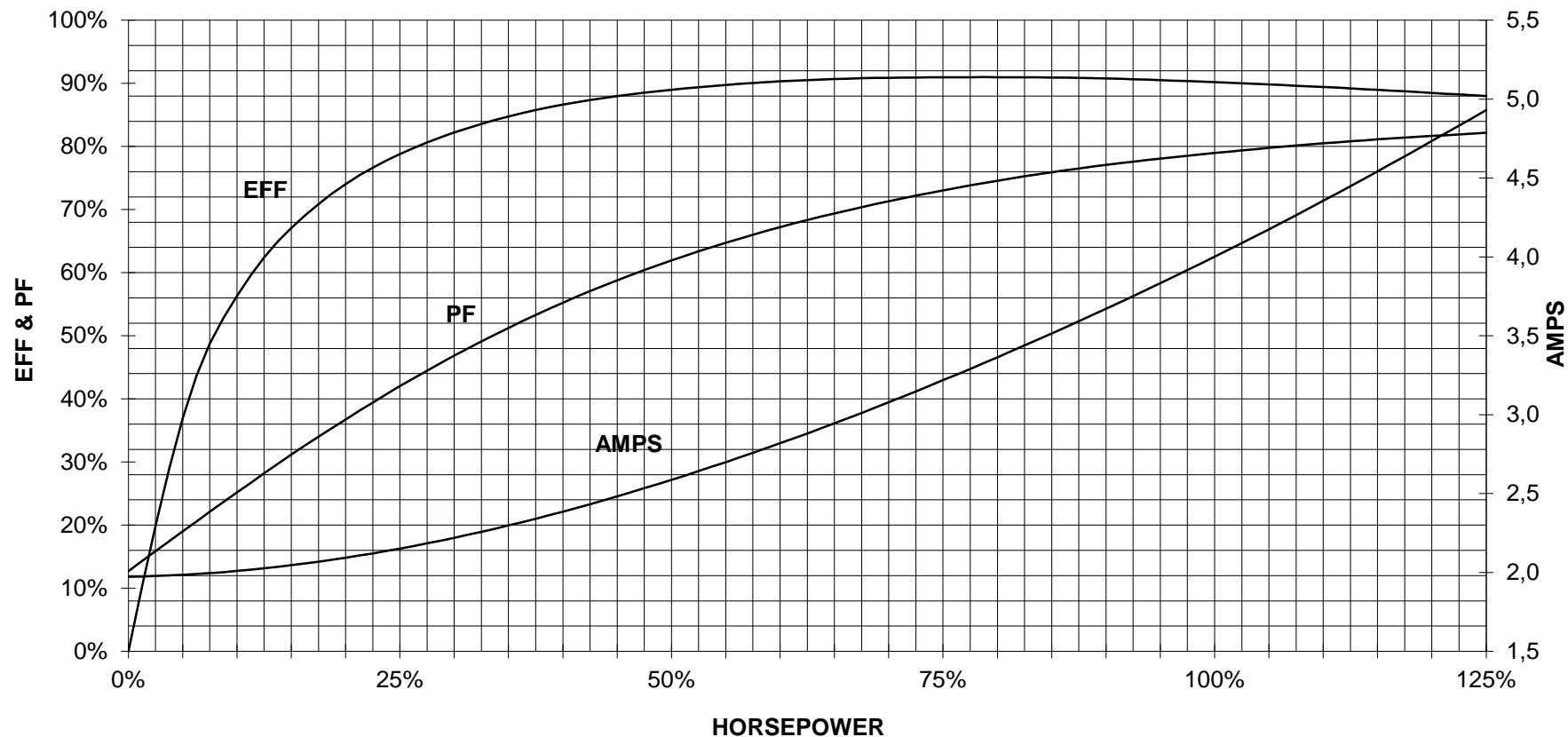
TORQUE & CURRENT VS. SPEED



CUSTOMER: _____ ORDER#: _____

3 HP 1800 RPM 182T FRAME 460 VOLTS 3 PHASE NEMA DESIGN B

SIEMENS INDUSTRY, INC.
PERFORMANCE CURVE
SD100 IEEE841 NPP



CUSTOMER _____ ORDER # _____ PO # _____

PERFORMANCE BASED ON DESIGN CALCULATIONS. SUBJECT TO CHANGE WITHOUT NOTICE.

REV. 1