

# Data sheet for three-phase Squirrel-Cage-Motors SIMOTICS

**Motor type:** FS: 182T - 8p - 1 hp -

Client order no.	Item-No.	Offer no.
Order no.	Consignment no.	Project
Remarks		

**Electrical data** Class I, Div 1 Gr. C&D; Class II, Div1, Gr. F&G

U [V]	$\Delta/Y$	f [Hz]	P [HP]	P [kW]	n [rpm]	I Load [Amps]					LRC	Nom. Eff Load [%]			Pwr. Factor Load [%]			Torque [lb-ft]	T <sub>A</sub> /T <sub>N</sub> LRT [%]	T <sub>k</sub> /T <sub>N</sub> BDT [%]
						4/4	3/4	1/2	0	4/4		3/4	2/4	4/4	3/4	2/4				
575		60	1.00	-/-	870	1.70	1.50	1.40	1.20	7.2	81.5	80.0	77.0	56.0	47.0	36.0	8.0	138	250	
Frame Type: 182T		Type of constr.: (A) Foot mounted - End shield				Ins. Cl.:Insulation class F		Motor Prot.:(G) Thermostats, Klixon type, normally closed				NEMA Des.: B		S.F.: 1.15						
Mtr. WT:105						Temp. Rise Cl.: B		Amb. Temp.: + to -20 °C @1000 m				kVA: J		IP IP65						

**Mechanical data**

Sound level (SPL / SWL) at 60 Hz	54.0 dB(A) / 63.0 dB(A)	Thickener	Polyurea
Octave Band Center Frequencies Hertz		Safe Stall Time Hot	50 s
250	500	1000	2000
4000	8000	Hz	
SPL@3		dB(A)	
Moment of inertia	0.2 Lb-ft <sup>2</sup>	Safe Stall Time Cold	68 s
Ext Load Inertia Capability:	31.0 Lb ft <sup>2</sup>	Frame material	cast iron
<b>Bearings</b>		Color, paint shade	
Bearing DE   NDE	6206 Z C3 S0	6206 Z C3 S0	
Bearing_Type	Ball Bearing	Ball Bearing	
AFBMA:	30BC02JP30	30BC02JP30	
<b>Grease</b>		Coating (paint finish)	
Capacity	0.2 oz	0.2 oz	
Grease Type:	Exxon Mobile EM		
		<b>Ventilation Type</b>	
		Method of cooling	TEFC
		Direction of rotation	Bidirectional
		Fan Material	Polypropylen ESD
		VFD	CT: 4:1 VT: 20:1
		Space heaters	without
		Brake:	-/-


**Terminal box**

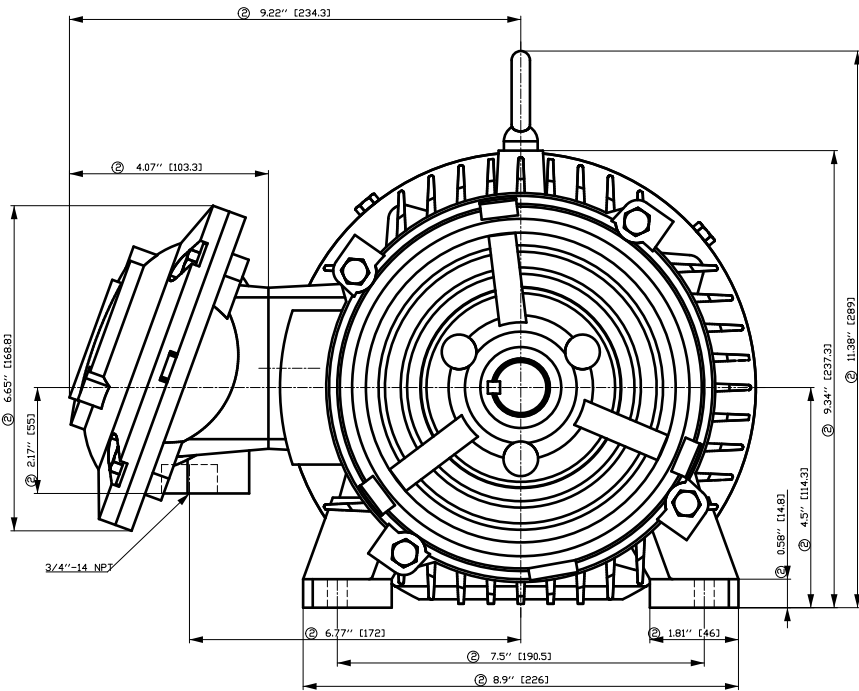
Lead Wire Connection	3 LEAD - WYE				Terminal box position	(3) Mounting - F-1
Voltage	L1	L1	L1	Connected together	Material of terminal box	
----	----	----	----	----	Cable entry	-/-
----	T1	T2	T3	----		

**Notes:**

I<sub>r</sub>/I<sub>N</sub> = locked rotor current / current nominal  
M<sub>r</sub>/M<sub>N</sub> = locked rotor torque / torque nominal  
M<sub>b</sub>/M<sub>N</sub> = break down torque / nominal torque

3) Value is valid only for DOL operation with motor design IC411  
2) at rated power / at full load

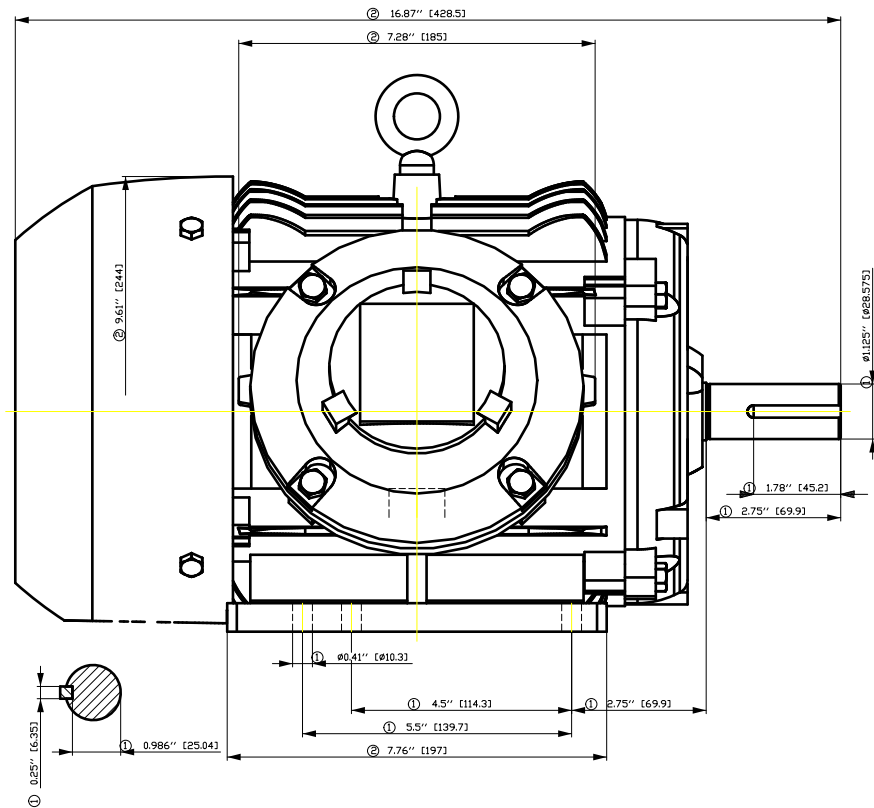
responsible dep. DI MC LVM	technical reference	created by DT Configurator	approved by	<i>Technical data are subject to change! There may be discrepancies between software and hardware versions</i>			
	document type datasheet	document status released		customer			
	title 1MB2121-1CD11-3AG3	document number					
© Siemens AG 2022	rev. 01	creation date 2022-04-08 17:48	language en	Page 1/1			



① Tolerances according to NEMA std.

② All these dimensions corresponding to assemblies and castings shall have a tolerance as per DIN standard 1686-GTB 19.

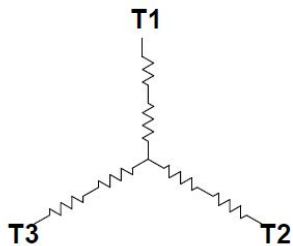
③ Not according to NEMA std.



Tolerance	Surface	Material	Weight	Scale
FT ÖGFGEÖÖFF#ÖÖH	Author	ÖB \}•\} \}•\} \}•\} *	É	{ {
É	Creator	ÖVS		
	Approval	T æ : ^æ@` } *		
	Department			
	Change Order	MFB		Doc Type
	Doc. State	I ð ÖG		Paper Size
	Revision	Index RS		1st Language ^}
				2nd Language â^
© Siemens AG 2018	Project No	É	Ref No	É
				Sheet F of F

刀线管  
 用转为  
 文金  
 图  
 积  
 01  
 02  
 03  
 04  
 05  
 06  
 07  
 08  
 09  
 10  
 11  
 12  
 13  
 14  
 15  
 16  
 17  
 18  
 19  
 20  
 21  
 22  
 23  
 24  
 25  
 26  
 27  
 28  
 29  
 30  
 31  
 32  
 33  
 34  
 35  
 36  
 37  
 38  
 39  
 40  
 41  
 42  
 43  
 44  
 45  
 46  
 47  
 48  
 49  
 50  
 51  
 52  
 53  
 54  
 55  
 56  
 57  
 58  
 59  
 60  
 61  
 62  
 63  
 64  
 65  
 66  
 67  
 68  
 69  
 70  
 71  
 72  
 73  
 74  
 75  
 76  
 77  
 78  
 79  
 80  
 81  
 82  
 83  
 84  
 85  
 86  
 87  
 88  
 89  
 90  
 91  
 92  
 93  
 94  
 95  
 96  
 97  
 98  
 99  
 100

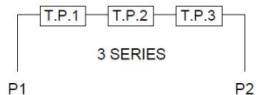
Main terminal diagram



3 LEAD WYE			
LINES			CONN.
L1	L2	L3	
T1	T2	T3	Y

Motor protection

THERMOSTATS

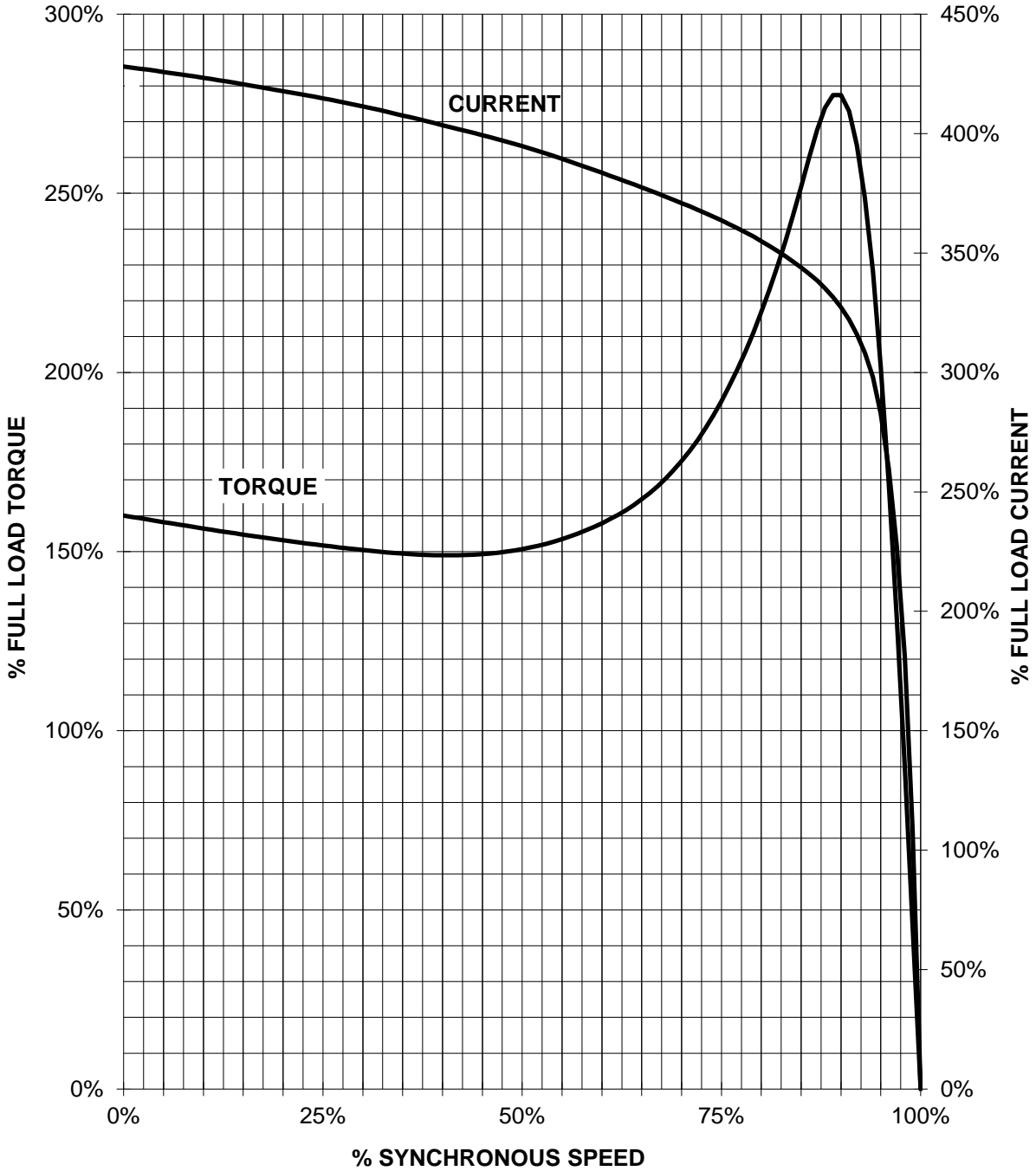


responsible dep. DI MC LVM	technical reference	created by	approved by	Project
<b>SIEMENS</b>	document type Wiring Diagram	document status free		customer
	title 1MB2121-1CD11-3AG3	document number		
© Siemens AG 2019		rev. 01	creation date 12/03/2019	language en Page 1/1

# SIEMENS INDUSTRY, INC.

HP 1 VOLTS <600 RPM 900 TYPE XP100  
HZ 60 PHASE 3 FRAME 182T NEMA B

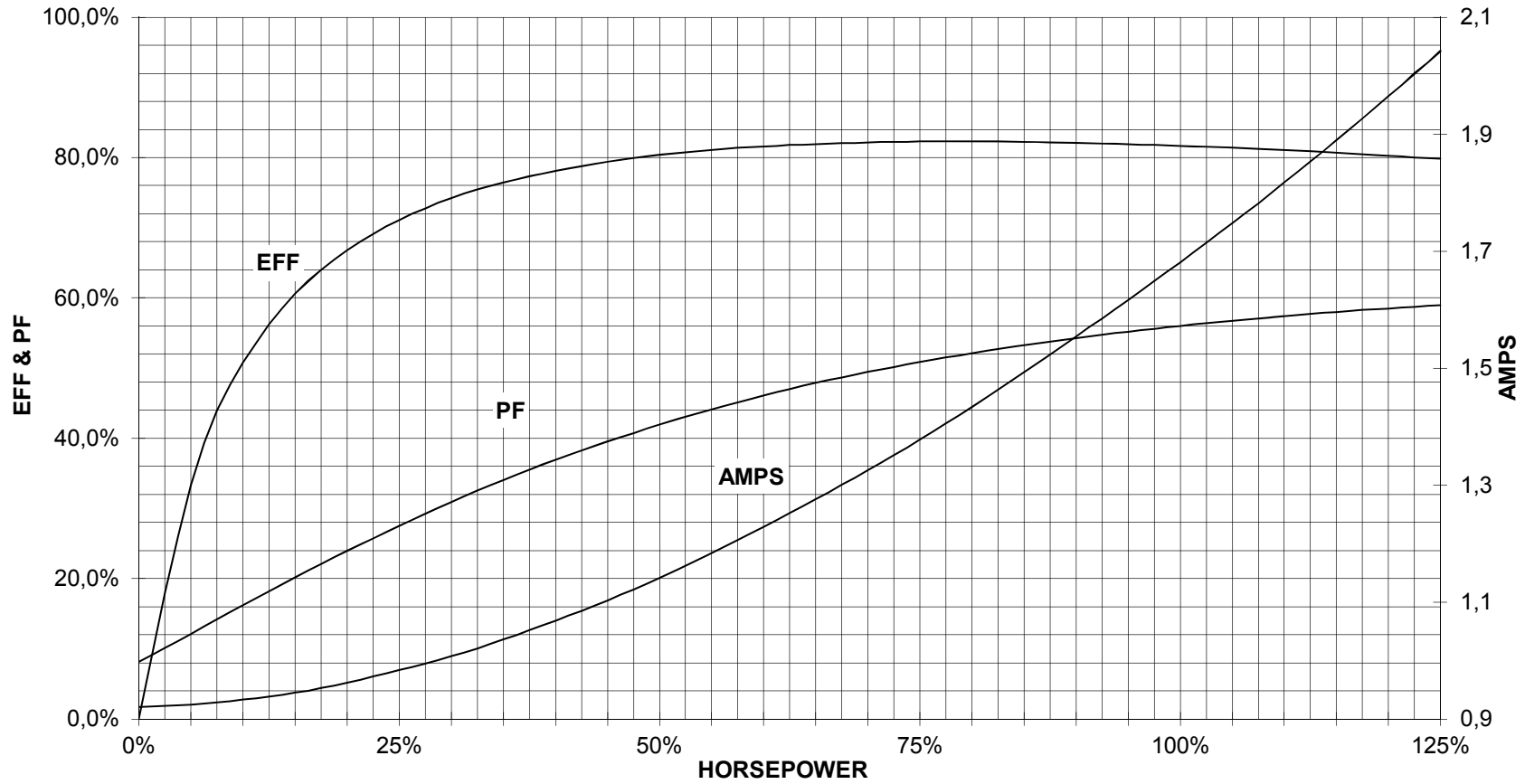
## TORQUE & CURRENT VS. SPEED



CUSTOMER: \_\_\_\_\_ ORDER#: \_\_\_\_\_

1 HP 900 RPM 182T FRAME 575 VOLTS 3 PHASE NEMA DESIGN B

**SIEMENS INDUSTRY, INC.**  
**PERFORMANCE CURVE**  
**XP100**



CUSTOMER \_\_\_\_\_ ORDER # \_\_\_\_\_ PO # \_\_\_\_\_

PERFORMANCE BASED ON DESIGN CALCULATIONS. SUBJECT TO CHANGE WITHOUT NOTICE.

REV. 1