

Data sheet for three-phase Squirrel-Cage-Motors SIMOTICS

Motor type: FS: 284T - 8p - 10 hp -

Client order no.	Item-No.	Offer no.
Order no.	Consignment no.	Project
Remarks		

Electrical data Class I, Div 1 Gr. C&D; Class II, Div1, Gr. F&G

U [V]	Δ/Y	f [Hz]	P [HP]	P [kW]	n [rpm]	I Load [Amps]					LRC	Nom. Eff Load [%]			Pwr. Factor Load [%]			Torque [lb-ft]	T _A /T _N LRT [%]	T _k /T _N BDT [%]
						4/4	3/4	1/2	0	4/4		3/4	2/4	4/4	3/4	2/4				
575		60	10.00	-/-	885	13.60	11.80	10.10	8.80	64.8	90.2	89.8	88.2	61.0	53.0	42.0	59.0	161	224	
Frame Type: 284T		Type of constr.: (A) Foot mounted - End shield				Ins. Cl.:Insulation class F		Motor Prot.:(G) Thermostats, Klixon type, normally closed				NEMA Des.: B		S.F.: 1.15						
Mtr. WT:486						Temp. Rise Cl.: B		Amb. Temp.: + to -20 °C @1000 m				kVA: H		IP IP65						


Mechanical data

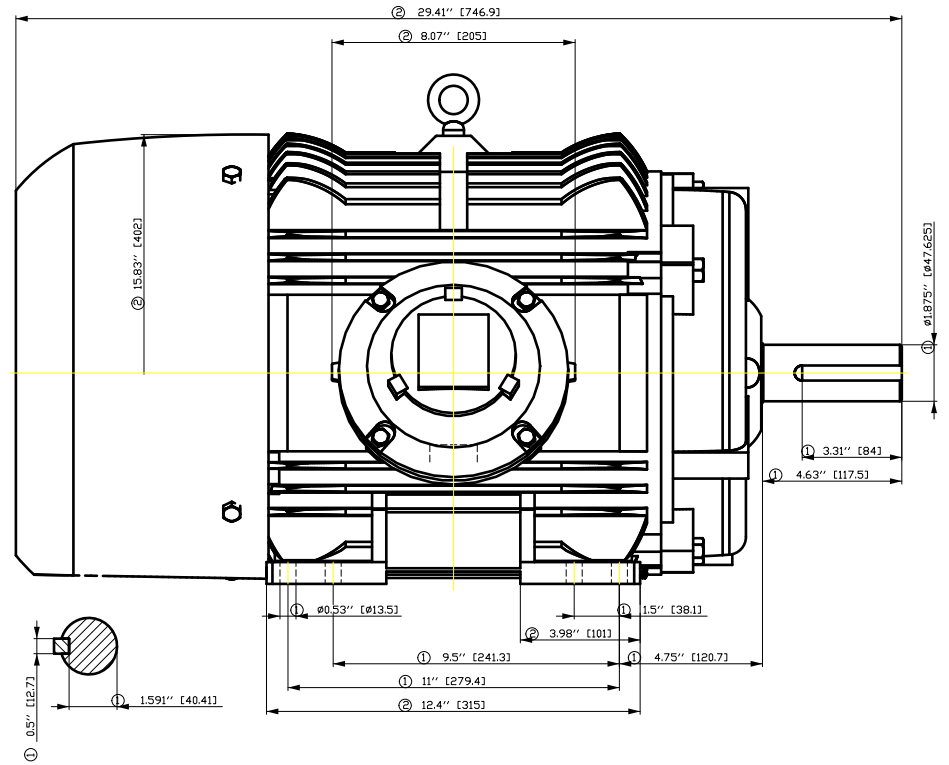
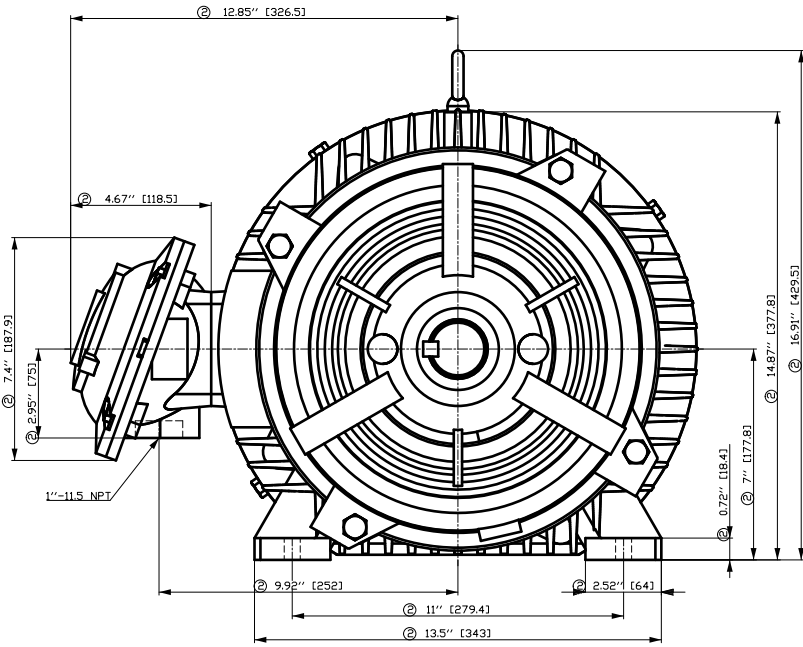
Sound level (SPL / SWL) at 60 Hz	59.0 dB(A) / 70.0 dB(A)	Thickener	Polyurea
Octave Band Center Frequencies Hertz		Safe Stall Time Hot	15 s
250	500	1000	2000
4000	8000	Hz	
SPL@3		dB(A)	
Moment of inertia	4.1 Lb-ft ²	Safe Stall Time Cold	30 s
Ext Load Inertia Capability:	273.0 Lb ft ²	Frame material	cast iron
Bearings		Color, paint shade	
Bearing DE NDE	6310 Z C3 S0	6310 Z C3 S0	
Bearing_Type	Ball Bearing	Ball Bearing	
AFBMA:	50BC03JP30	50BC03JP30	
Grease		Coating (paint finish)	
Capacity	2.6 oz	2.6 oz	
Grease Type:	Exxon Mobile EM	Ventilation Type	
		Method of cooling	TEFC
		Direction of rotation	Bidirectional
		Fan Material	Polypropylen ESD
		VFD	CT: 4:1 VT: 20:1
		Space heaters	without
		Brake:	-/-

Terminal box

Lead Wire Connection	3 LEAD - DELTA	Terminal box position	(3) Mounting - F-1
Voltage	L1	L1	L1
	Connected together	Material of terminal box	
		Cable entry	-/-

Notes:			
I _L /I _N = locked rotor current / current nominal	M _L /M _N = locked rotor torque / torque nominal	M _B /M _N = break down torque / nominal torque	3) Value is valid only for DOL operation with motor design IC411 2) at rated power / at full load

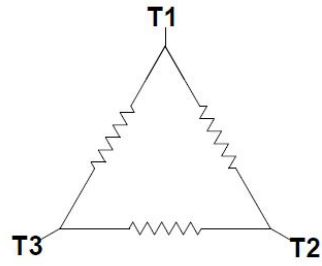
responsible dep. DI MC LVM	technical reference	created by DT Configurator	approved by	<i>Technical data are subject to change! There may be discrepancies between software and hardware versions</i>	
	document type datasheet	document status released	customer		
	title 1MB2121-2CD11-3AG3	document number			
© Siemens AG 2022	rev. 01	creation date 2022-04-08 21:00	language en	Page 1/1	



- ① Tolerances according to NEMA std.
- ② All these dimensions corresponding to assemblies and castings shall have a tolerance as per DIN standard 1686-GTB 19.
- ③ Not according to NEMA std.

Tolerance	Surface	Material	Weight	Scale
FT ÖGFC EÖÖFF# EÖH	Author	ÖG ^ } • q } a# / a# q # *	É	{ {
É	Creator	ÖVS		
	Approval	T a# : ^ a# @ } *		
	Department			
	Change Order	MLFB		Doc Type
	Doc. State	I ð EÖG	Item No	Paper Size
	Revision	Index RS	Doc No	1st Language ^ } 2nd Language a ^
© Siemens AG 2018	Project No	É	Ref No	É
				Sheet F of F

Main terminal diagram



3 LEAD DELTA			
LINES			CONN.
L1	L2	L3	
T1	T2	T3	Δ

Motor protection

THERMOSTATS



responsible dep.
DI MC LVM

technical reference

created by

approved by

Project

SIEMENS

document type
Wiring Diagram

title
1MB2121-2CD11-3AG3

document status
free

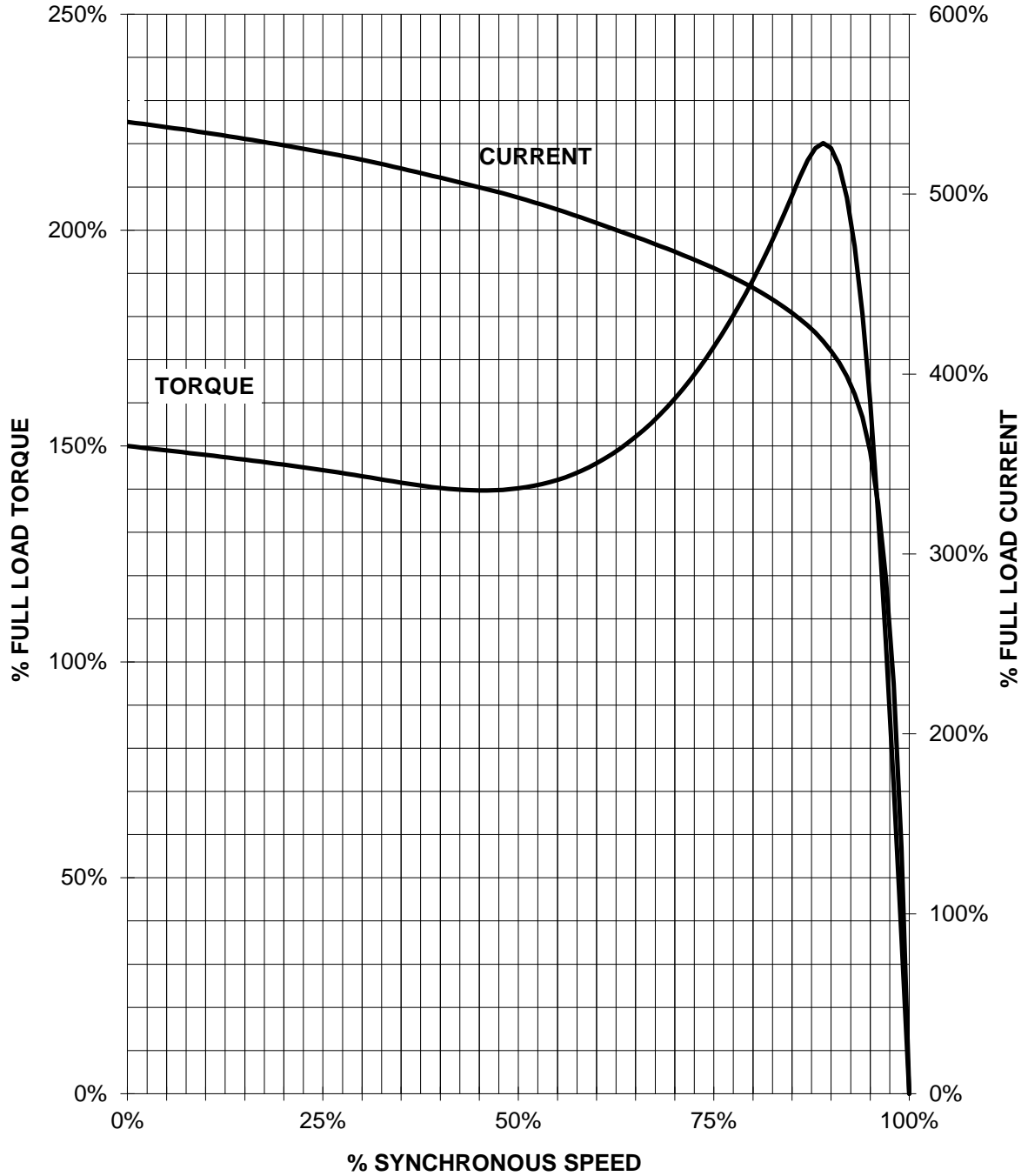
document number

customer

SIEMENS INDUSTRY, INC.

HP 10 VOLTS <600 RPM 900 TYPE XP100
HZ 60 PHASE 3 FRAME 284T NEMA B

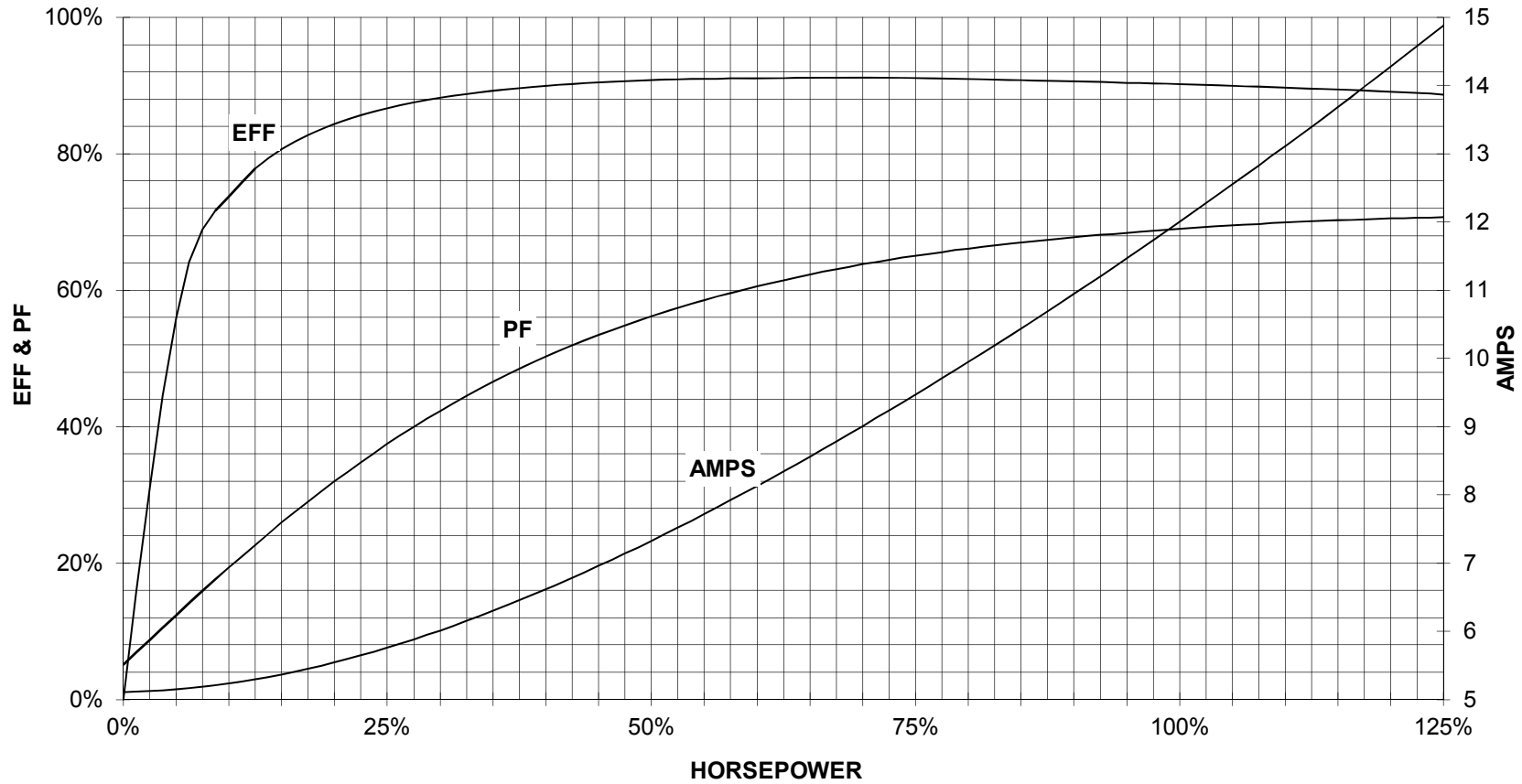
TORQUE & CURRENT VS. SPEED



CUSTOMER: _____ ORDER#: _____

10 HP 900 RPM 284T FRAME 575 VOLTS 3 PHASE NEMA DESIGN B

**SIEMENS INDUSTRY, INC.
PERFORMANCE CURVE
XP100**



CUSTOMER _____ ORDER # _____ PO # _____

PERFORMANCE BASED ON DESIGN CALCULATIONS. SUBJECT TO CHANGE WITHOUT NOTICE.

REV. 1