

# Data sheet for three-phase Squirrel-Cage-Motors SIMOTICS

**Motor type:** FS: 286T - 8p - 15 hp -

Client order no.	Item-No.	Offer no.
Order no.	Consignment no.	Project
Remarks		

**Electrical data** Class I, Div 1 Gr. C&D; Class II, Div1, Gr. F&G

U [V]	$\Delta/Y$	f [Hz]	P [HP]	P [kW]	n [rpm]	I Load [Amps]					LRC	Nom. Eff Load [%]			Pwr. Factor Load [%]			Torque [lb-ft]	T <sub>A</sub> /T <sub>N</sub> LRT [%]	T <sub>k</sub> /T <sub>N</sub> BDT [%]
						4/4	3/4	1/2	0	4/4		3/4	2/4	4/4	3/4	2/4				
575		60	15.00	-/-	885	18.40	15.80	13.40	11.20	92.8	91.0	90.6	89.4	66.0	59.0	47.0	89.0	160	240	
Frame Type: 286T		Type of constr.: (A) Foot mounted - End shield				Ins. Cl.:Insulation class F		Motor Prot.:(G) Thermostats, Klixon type, normally closed				NEMA Des.: B		S.F.: 1.15						
Mtr. WT:531						Temp. Rise Cl.: B		Amb. Temp.: + to -20 °C @1000 m				kVA: G		IP IP65						


**Mechanical data**

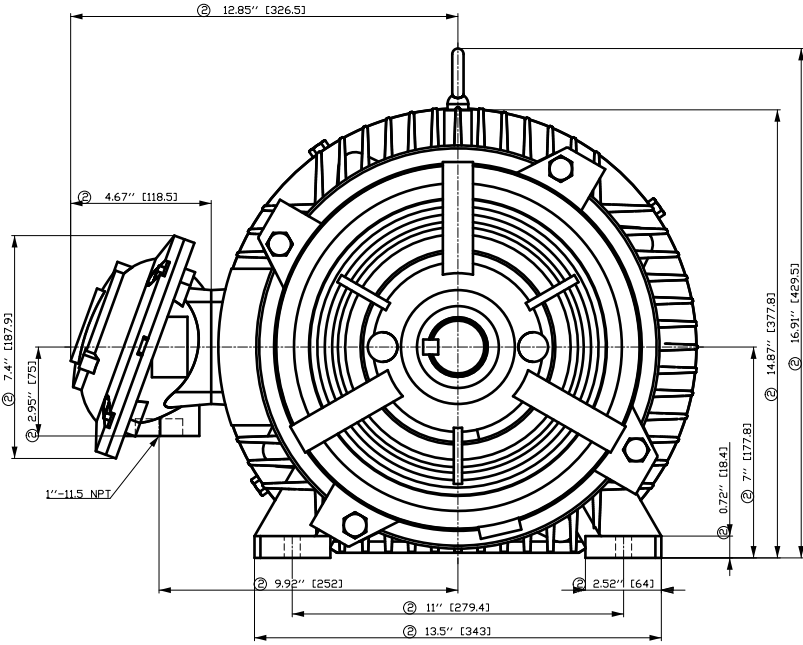
Sound level (SPL / SWL) at 60 Hz	59.0 dB(A) / 70.0 dB(A)	Thickener	Polyurea
Octave Band Center Frequencies Hertz		Safe Stall Time Hot	18 s
250	500	1000	2000
4000	8000	Hz	
SPL@3		dB(A)	
Moment of inertia	5.2 Lb-ft <sup>2</sup>	Safe Stall Time Cold	35 s
Ext Load Inertia Capability:	400.0 Lb ft <sup>2</sup>	Frame material	cast iron
<b>Bearings</b>		Color, paint shade	
Bearing DE   NDE	6310 Z C3 S0	6310 Z C3 S0	
Bearing_Type	Ball Bearing	Ball Bearing	
AFBMA:	50BC03JP30	50BC03JP30	
<b>Grease</b>		Coating (paint finish)	
Capacity	2.6 oz	2.6 oz	
Grease Type:	Exxon Mobile EM	<b>Ventilation Type</b>	
		Method of cooling	TEFC
		Direction of rotation	Bidirectional
		Fan Material	Polypropylen ESD
		VFD	CT: 4:1 VT: 20:1
		Space heaters	without
		Brake:	-/-

**Terminal box**

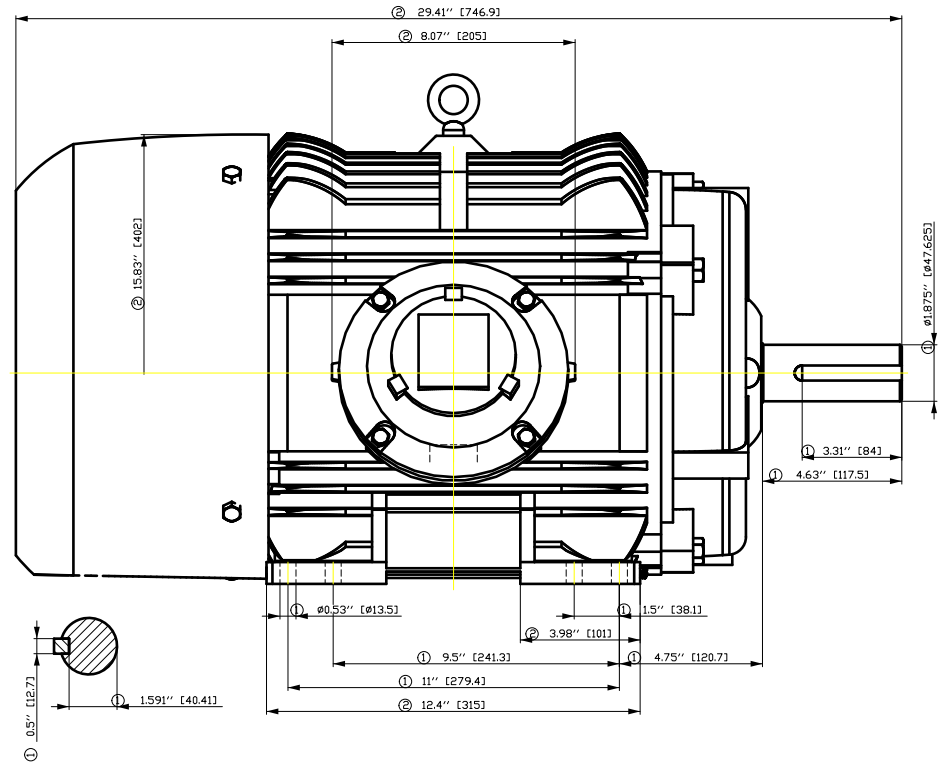
Lead Wire Connection	3 LEAD - DELTA	Terminal box position	(3) Mounting - F-1
Voltage	L1	L1	L1
	Connected together	Material of terminal box	
		Cable entry	-/-

<b>Notes:</b>			
I <sub>L</sub> /I <sub>N</sub> = locked rotor current / current nominal	M <sub>L</sub> /M <sub>N</sub> = locked rotor torque / torque nominal	M <sub>b</sub> /M <sub>N</sub> = break down torque / nominal torque	3) Value is valid only for DOL operation with motor design IC411 2) at rated power / at full load

responsible dep. DI MC LVM	technical reference	created by DT Configurator	approved by	<i>Technical data are subject to change! There may be discrepancies between software and hardware versions</i>	
	document type datasheet	document status released	customer		
	title 1MB2121-2CD21-3AG3	document number			
© Siemens AG 2022	rev. 01	creation date 2022-04-08 21:01	language en	Page 1/1	



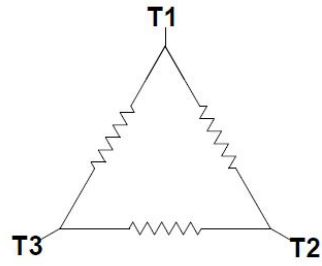
- ① Tolerances according to NEMA std.
- ② All these dimensions corresponding to assemblies and castings shall have a tolerance as per DIN standard 1686-GTB 19.
- ③ Not according to NEMA std.



Tolerance	Surface	Material	Weight	Scale
FT ÖGFC EÖÖGF EÖH	Author	ÖS T a : ^ @ } *	E	
E	Creator			
	Approval			
	Department	MLFB	Doc Type	/
	Change Order			
	Doc. State	I ÖG	Item No	Paper Size
	Revision	Index	Doc No	1st Language
				2nd Language
© Siemens AG 2018	Project No	E	Ref No	E
				Sheet
				F of F

刀线管  
 用转平口  
 为全图  
 面积  
 图  
 01 11.5 NPT  
 1.1 27.94  
 2.52 64  
 0.72 18.4  
 7 177.8  
 14.87 377.8  
 16.91 429.5  
 9.92 252  
 11 279.4  
 13.5 343  
 1.591 40.41  
 0.5 12.7  
 0.53 13.5  
 1.5 38.1  
 3.98 101  
 9.5 241.3  
 11 279.4  
 12.4 315  
 4.75 120.7  
 4.63 117.5  
 3.31 84  
 1.875 47.625

Main terminal diagram



3 LEAD DELTA			
LINES			CONN.
L1	L2	L3	
T1	T2	T3	Δ

Motor protection

THERMOSTATS



responsible dep.  
DI MC LVM

technical reference

created by

approved by

Project

**SIEMENS**

document type  
Wiring Diagram

title  
1MB2121-2CD21-3AG3

document status  
free

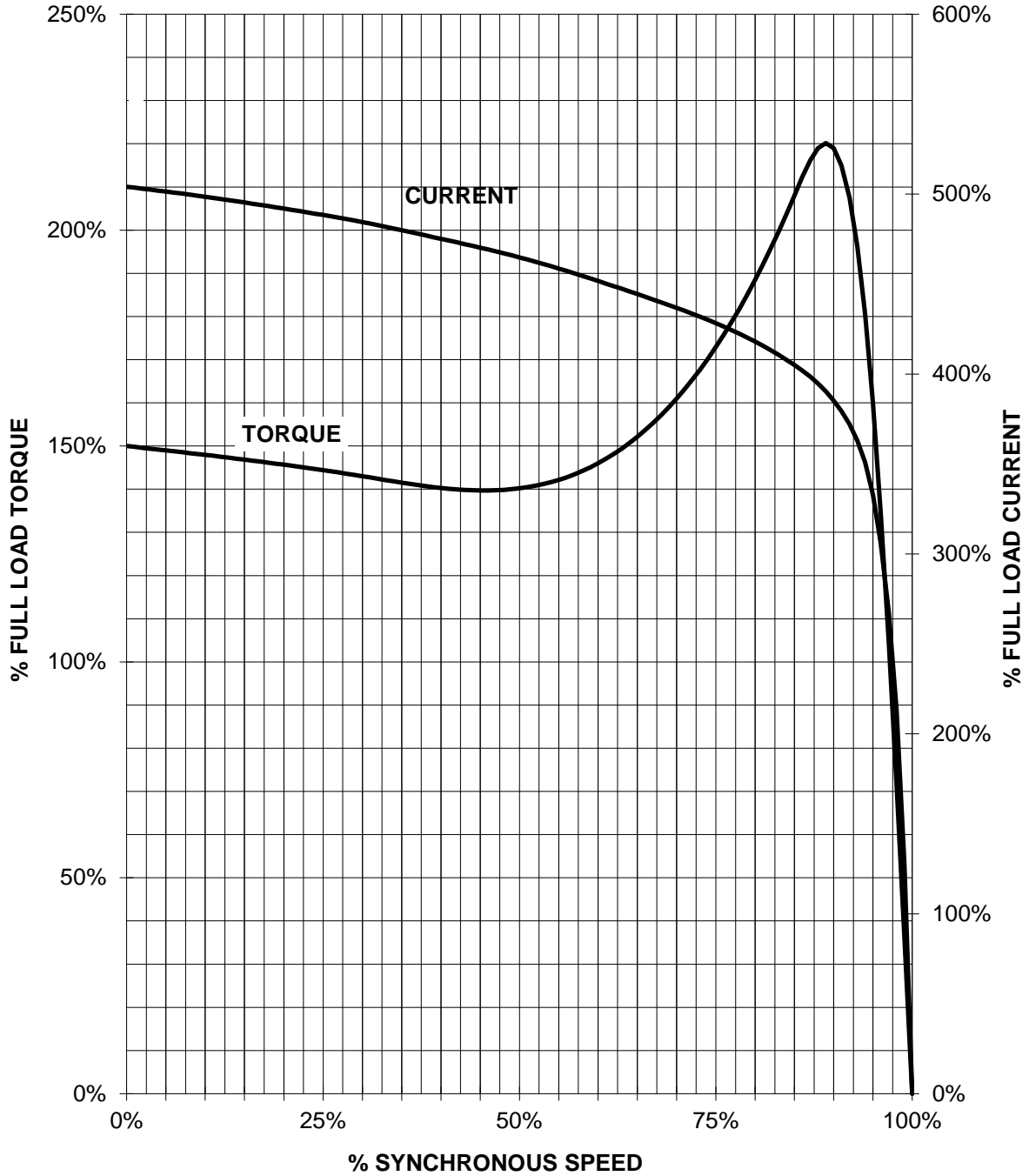
document number

customer

# SIEMENS INDUSTRY, INC.

HP 15 VOLTS <600 RPM 900 TYPE XP100  
HZ 60 PHASE 3 FRAME 286T NEMA B

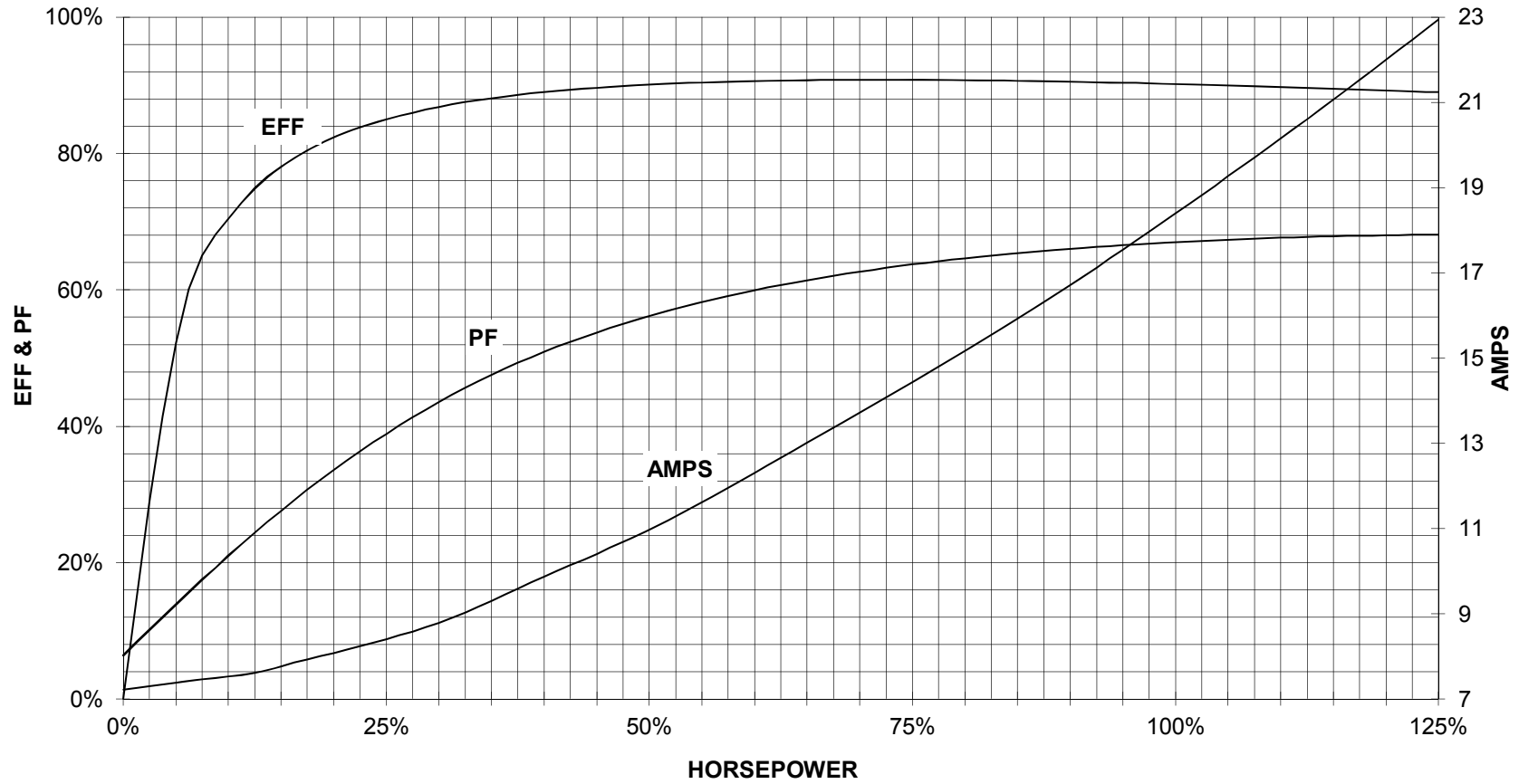
## TORQUE & CURRENT VS. SPEED



CUSTOMER: \_\_\_\_\_ ORDER#: \_\_\_\_\_

15 HP 900 RPM 286T FRAME 575 VOLTS 3 PHASE NEMA DESIGN B

**SIEMENS INDUSTRY, INC.**  
**PERFORMANCE CURVE**  
**XP100**



CUSTOMER \_\_\_\_\_ ORDER # \_\_\_\_\_ PO # \_\_\_\_\_

PERFORMANCE BASED ON DESIGN CALCULATIONS. SUBJECT TO CHANGE WITHOUT NOTICE.

REV. 1