

# Data sheet for three-phase Squirrel-Cage-Motors SIMOTICS

**Motor type:** FS: 213TC - 4p - 7.5 hp -

Client order no.	Item-No.	Offer no.
Order no.	Consignment no.	Project

Remarks

**Electrical data** **Class I Division 1 Groups D**

U [V]	$\Delta/Y$	f [Hz]	P [HP]	P [kW]	n [rpm]	I Load [Amps]					LRC	Nom. Eff Load [%]			Pwr. Factor Load [%]			Torque [lb-ft]	T <sub>A</sub> /T <sub>N</sub> LRT [%]	T <sub>k</sub> /T <sub>N</sub> BDT [%]
						4/4	3/4	1/2	0	4/4		3/4	2/4	4/4	3/4	2/4				
460		60	7.50	-/-	1,765	9.70	7.90	6.40	5.00	63.0	91.7	91.7	90.7	78.9	72.3	60.5	22.0	273	455	
230		60	7.50	-/-	1,765	19.40					91.7	91.7	90.7	78.9	72.3	60.5	22.0	273	455	

Frame Type: 213TC	Type of constr.: ( G ) Round body - C-Face	Ins. Cl.:Insulation class F	Motor Prot.:(A) No winding protection	NEMA Des.: B	S.F.: 1.15
Mtr. WT:192		Temp. Rise Cl.: B	Amb. Temp.: + to -20 °C @1000 m	kVA: H	IP IP65

**Mechanical data**

Sound level (SPL / SWL) at 60 Hz	57.0 dB(A) / 69.0 dB(A)	Thickener	Polyurea
Octave Band Center Frequencies Hertz	250 500 1000 2000 4000 8000 Hz	Safe Stall Time Hot	25 s
SPL@3	dB(A)	Safe Stall Time Cold	42 s
Moment of inertia	0.8 Lb-ft <sup>2</sup>	Frame material	cast iron
Ext Load Inertia Capability:	39.0 Lb ft <sup>2</sup>	Color, paint shade	
<b>Bearings</b>		Coating (paint finish)	
Bearing DE   NDE	6208 Z C3 S0   6208 Z C3 S0	<b>Ventilation Type</b>	
Bearing_Type	Ball Bearing   Ball Bearing	Method of cooling	TEFC
AFBMA:	40BC02JP30   40BC02JP30	Direction of rotation	Bidirectional
<b>Grease</b>		Fan Material	Polypropylen ESD
Capacity	0.3 oz   0.3 oz	VFD	CT: 4:1 VT: 20:1
Grease Type:	Exxon Mobile EM	Space heaters	without
		Brake:	-/-


**Terminal box**

Lead Wire Connection	9 LEAD - WYE	Terminal box position	(3) Mounting - F-1
Voltage	L1 L1 L1 Connected together	Material of terminal box	
LOW	T1 T7 T2 T8 T3 T9 T4 T5 T6	Cable entry	-/-
HIGH	T1 T2 T3 T4 T7-T5 T8-T6 T9		

Notes:

1) I<sub>r</sub>/I<sub>N</sub> = locked rotor current / current nominal  
 2) M<sub>r</sub>/M<sub>N</sub> = locked rotor torque / torque nominal  
 3) Value is valid only for DOL operation with motor design IC411  
 4) M<sub>b</sub>/M<sub>N</sub> = break down torque / nominal torque  
 5) 2) at rated power / at full load

responsible dep.	technical reference	created by	approved by	<i>Technical data are subject to change! There may be discrepancies between software and customer interface</i>
DI MC LVM		DT Configurator		

	document type	document status	customer	
	datasheet	released		
	title	document number	rev.	creation date
	1MB2221-2AB11-6GA3		01	2022-04-08 19:00
© Siemens AG 2022			language	Page
			en	1/1

刀线  
用  
所  
文  
全  
金  
图  
样  
印  
行

刀线  
用  
所  
文  
全  
金  
图  
样  
印  
行

刀线  
用  
所  
文  
全  
金  
图  
样  
印  
行

刀线  
用  
所  
文  
全  
金  
图  
样  
印  
行

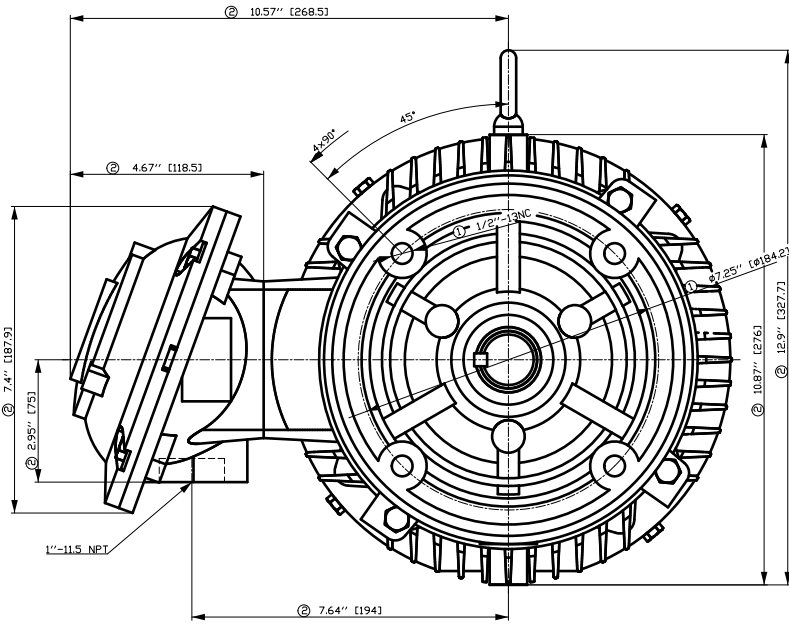
刀线  
用  
所  
文  
全  
金  
图  
样  
印  
行

刀线  
用  
所  
文  
全  
金  
图  
样  
印  
行

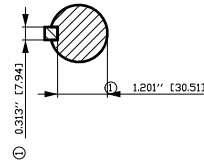
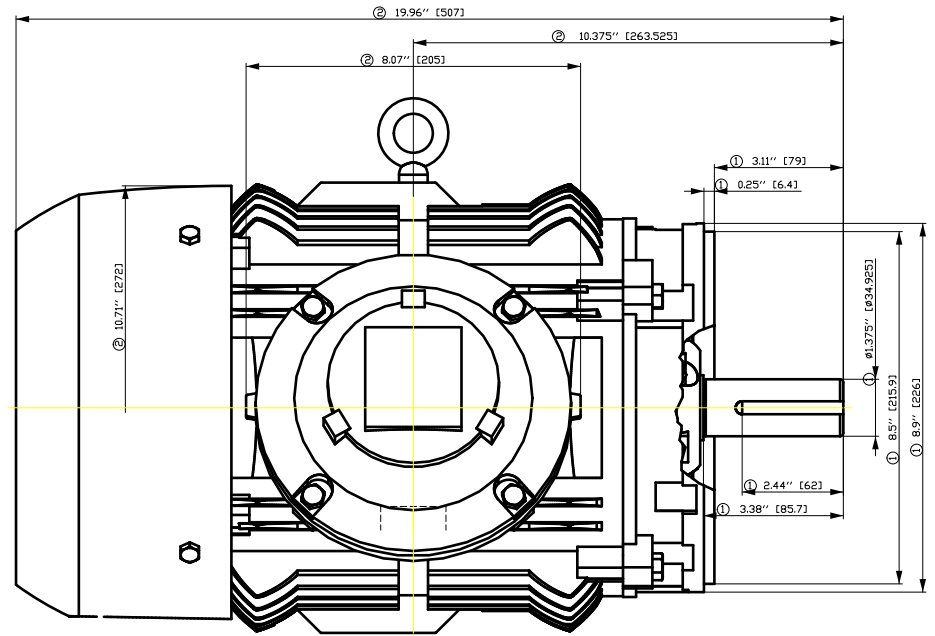
刀线  
用  
所  
文  
全  
金  
图  
样  
印  
行

刀线  
用  
所  
文  
全  
金  
图  
样  
印  
行

刀线  
用  
所  
文  
全  
金  
图  
样  
印  
行

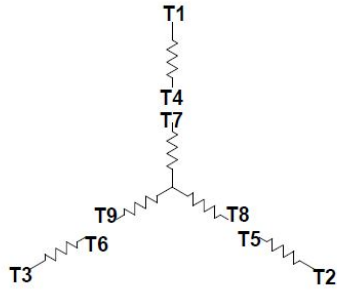


- ① Tolerances according to NEMA std.
- ② All these dimensions corresponding to assemblies and castings shall have a tolerance as per DIN standard 1686-GTB 19.
- ③ Not according to NEMA std.



Tolerance	Surface	Material	Weight	Scale
FT ÖGGEFCOFFÉ ÖCH			E	{ {
É	Author	ÖV	T æ : ^ @ } *	
	Creator			
	Approval			
	Department			
	Change Order	MFB	Doc Type	
SIEMENS	Doc State	I ð ÖG	Paper Size CH	
	Revision	Index RS	1st Language ^	
			2nd Language á	
© Siemens AG 2018	Project No	É	Ref No	É
				Sheet F of F

Main terminal diagram



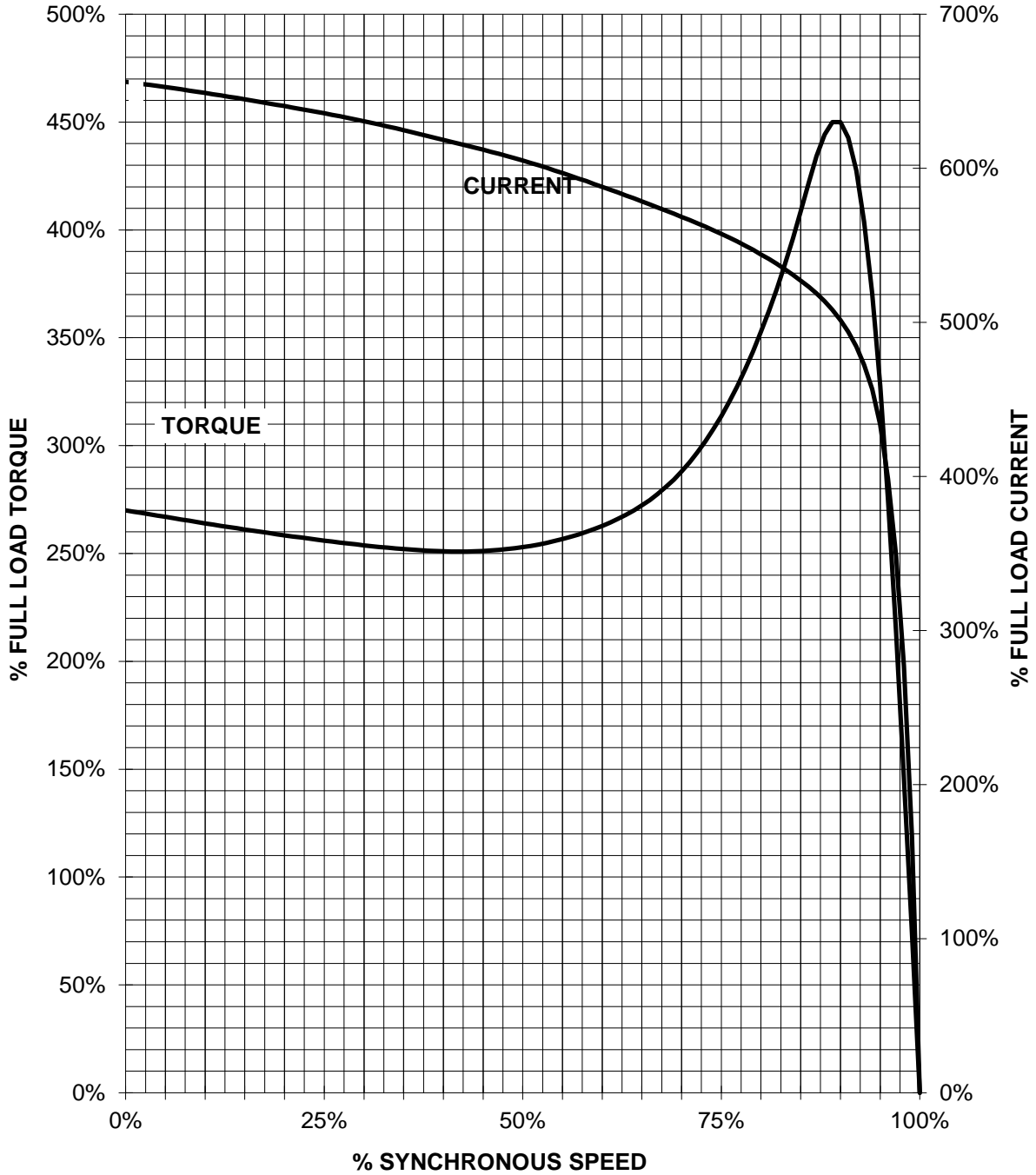
9 LEAD WYE						
Volts	LINES			CONNECTED TOGETHER	CONN.	
	L1	L2	L3			
LOW	T1 T7	T2 T6	T3 T9	T4 T5 T6	YY	
HIGH	T1	T2	T3	T4 T7-T5 T8-T6 T9	Y	

responsible dep. DI MC LVM	technical reference	created by	approved by	Project
<b>SIEMENS</b>	document type Wiring Diagram	document status free		customer
	title 1MB2221-2AB11-6GA3	document number		
© Siemens AG 2019	rev. 01	creation date 12/03/2019	language en	Page 1/1

# SIEMENS INDUSTRY, INC.

HP 7,5 VOLTS <600 RPM 1800 TYPE XP100 1D1  
HZ 60 PHASE 3 FRAME 213T NEMA B

## TORQUE & CURRENT VS. SPEED



CUSTOMER: \_\_\_\_\_ ORDER#: \_\_\_\_\_