

# Data sheet for three-phase Squirrel-Cage-Motors SIMOTICS

Motor type: **DP200 HPS - Definite Purpose motor - NEMA Premium Efficiency**

FS: **5013S - 2p - 800 hp -**

Client order no.	Item-No.	Offer no.
Order no.	Consignment no.	Project
Remarks		

## Electrical data

Class I Division 2 Gr. A, B, C or D T2D

U [V]	$\Delta/Y$	f [Hz]	P [HP]	P [kW]	n [rpm]	I Load [Amps]					Nom. Eff Load [%]			Pwr. Factor Load [%]			Torque [lb-ft]	T <sub>A</sub> /T <sub>N</sub> LRT [%]	T <sub>k</sub> /T <sub>N</sub> BDT [%]
						4/4	3/4	1/2	0	LRC	4/4	3/4	2/4	4/4	3/4	2/4			
460	$\Delta \Delta$	60	800.00	596.80	3,585	870	667.30	478.00	210.00	6300.0	96.2	96.0	95.1	89.4	87.7	82.4	1172.0	250	290

Frame Type: 5013S	Type of constr.: (A) Foot Mounted Horizontal (IMB3)	Ins. Cl.: Standard Class H Insulation	Motor Prot.: A: No Winding Protection	NEMA Des.: -/-	S.F.: 1.15
Mtr. WT: 5,798		Temp. Rise Cl.: B	Amb. Temp.: + 40 to °C @1000 m	kVA: G	IP 55

## Mechanical data

Sound level (SPL / SWL) at 60 Hz	93.0 dB(A) / 106.0 dB(A)							Thickener	Polyurea
Octave Band Center Frequencies Hertz									
	250	500	1000	2000	4000	8000	Hz	Safe Stall Time Hot	19 s
SPL@3	87.0	77.0	76.0	75.0	75.0	70.0	dB(A)	Safe Stall Time Cold	24 s
Moment of inertia	166.0 Lb-ft <sup>2</sup>							Frame material	Cast iron
Ext Load Inertia Capability:	560.0 Lb ft <sup>2</sup>							Color, paint shade	RAL 7030
<b>Bearings</b>								Coating (paint finish)	Standard Alkyed + Epoxy (C2)
Bearing DE   NDE	6316 Z C3 S0			6316 Z C3 S0 insulated			<b>Ventilation Type</b>		
Bearing_Type	Ball Bearing			Ball Bearing			Method of cooling	TEFC	
AFBMA:	80BC03JP3			80BC03JP3			Direction of rotation	Bi-Directional	
<b>Grease</b>								Fan Material	Polypropylene ESD
Capacity	9 oz			9 oz			VFD	CT: 4:1 VT: 20:1	
Grease Type:	Exxon Mobil EM							Space heaters	without
								Brake:	-/-


## Terminal box

Lead Wire Connection	12 TERMINAL - Connection DELTA					Terminal box position	(1) LHS Mount - View From DE (F-1) - DE or Center of Motor
Voltage	L1	L1	L1	Connected together		Material of terminal box	Cast Iron
---	---	---	---	---	-	Cable entry	(1) 5" NPT
RUN	T12-T7-T6-T1	T10-T8-T4-T2	T11-T9-T5-T13	---	$\Delta \Delta$		

## Notes:

I<sub>L</sub>/I<sub>N</sub> = locked rotor current / current nominal  
M<sub>L</sub>/M<sub>N</sub> = locked rotor torque / torque nominal  
M<sub>d</sub>/M<sub>N</sub> = break down torque / nominal torque

3) Value is valid only for DOL operation with motor design IC411  
2) at rated power / at full load

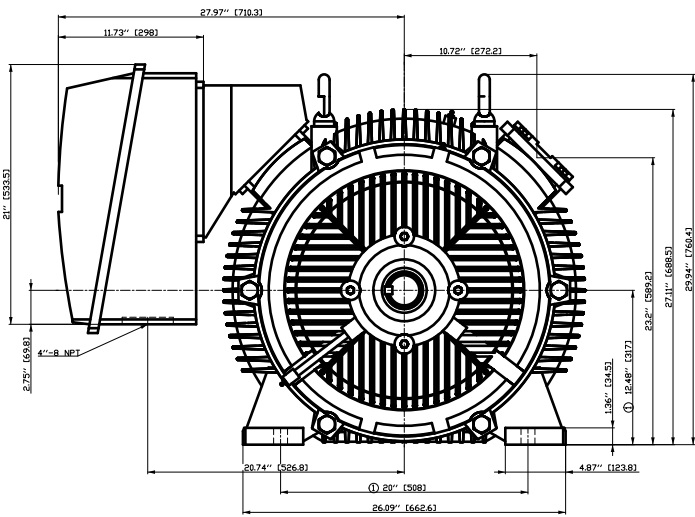
responsible dep. DI MC LVM	technical reference	created by DT Configurator	approved by	<i>Technical data are subject to change! There may be discrepancies between authorized and authorized versions</i>			
	document type datasheet	document status released		customer			
	title 1PC6521-5FA81-2AA1	document number					
© Siemens AG 2022	rev. 01	creation date 2022-04-08 01:07	language en	Page 1/1			

刀续需  
用文  
全金  
用  
后  
积

刀续需  
用文  
全金  
用  
后  
积

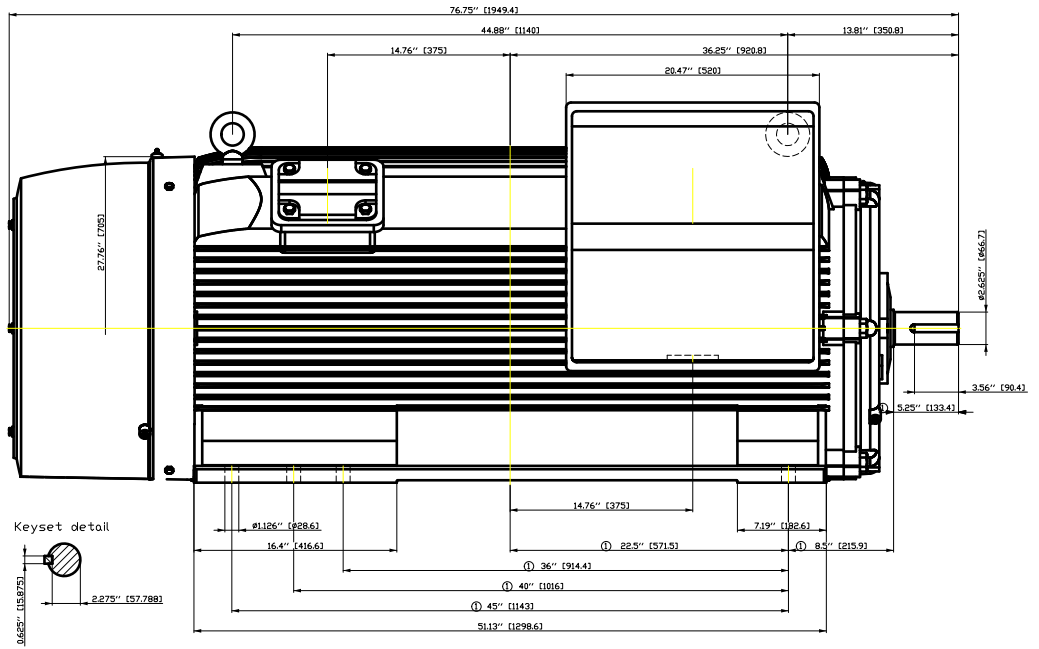
刀续需  
用文  
全金  
用  
后  
积

刀续需  
用文  
全金  
用  
后  
积

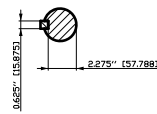


① Tolerances according to NEMA std.

All dimensions corresponding to assemblies and castings shall have a tolerance as per ISD 8062-3 DCTG 12.



Keyset detail

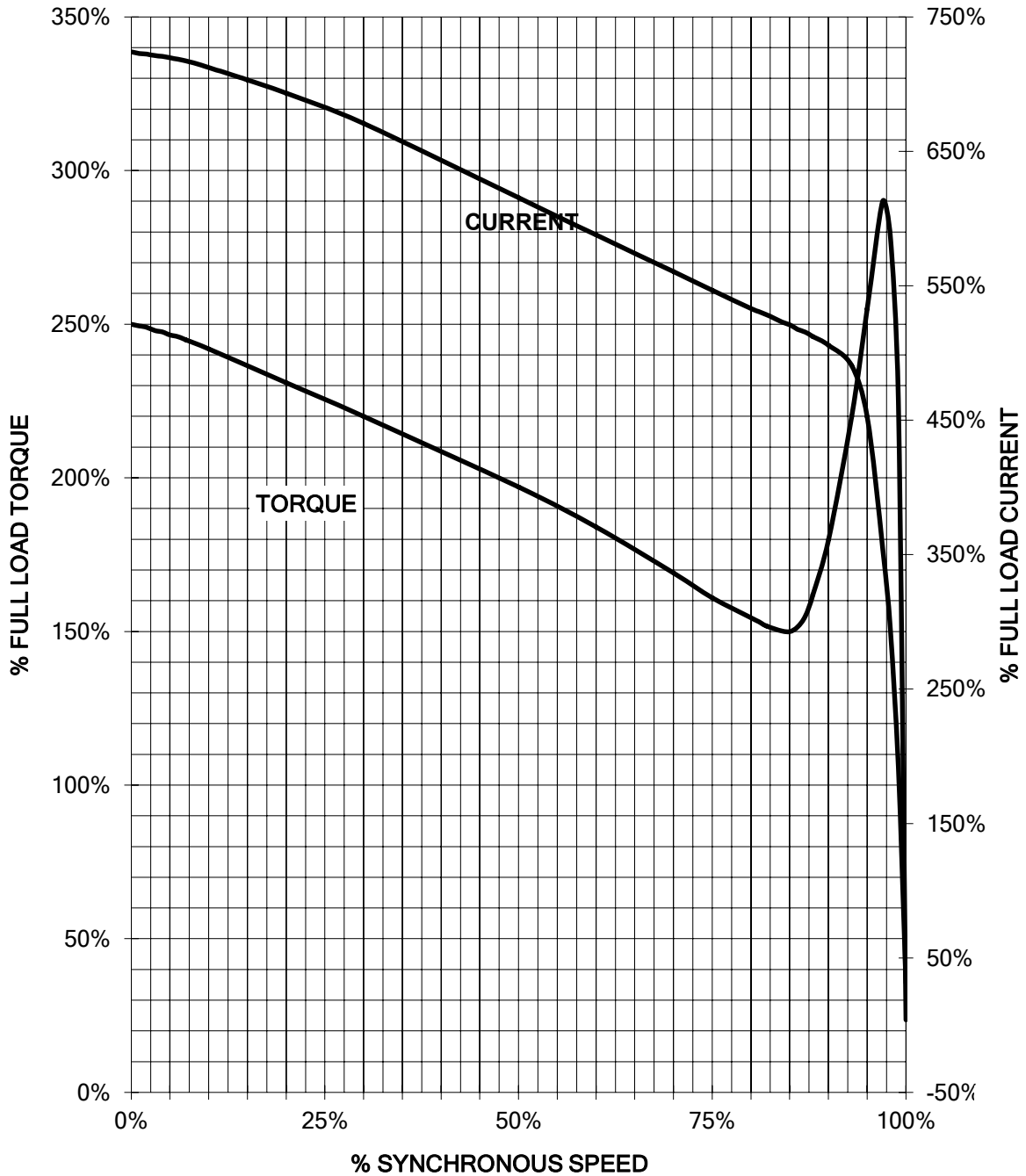


Tolerance	Surface	Material	Weight	Scale
FÜÖI i GF-EÖE FÉÖÖEF	Author	ÖV	1	1:1
É	Creator			
	Approval	T a : ^ & @ } *		
	Department			
	Change Order	MLFB		Doc Type
<b>SIEMENS</b>	Doc. State	I ð EÖG	Item No	Paper Size
© Siemens AG	Revision	Index RS	Doc No	1st Language ^}
2018	Project No	É	Ref No	2nd Language á^
			É	Sheet F of F

# SIEMENS INDUSTRY, INC.

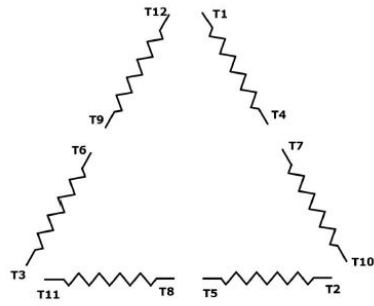
HP 800 VOLTS 460 RPM 3585 TYPE SD200  
HZ 60 PHASE 3 FRAME 5013S NEMA \_\_\_\_\_

## TORQUE & CURRENT VS. SPEED



Unrestricted CUSTOMER: \_\_\_\_\_ ORDER#: \_\_\_\_\_

Main terminal diagram



12 LEAD DELTA		
LINES	CONNECT TOGETHER	CONN.
L1	T12 - T7 - T6 - T1	ΔΔ
L2	T10 - T8 - T4 - T2	
L2	T11 - T9 - T5 - T3	

responsible dep. DI MC LVM	technical reference	created by	approved by	Project
<b>SIEMENS</b>	document type Wiring Diagram	document status free		customer
	title 1PC6521-5FA81-2AA1	document number		
© Siemens AG 2019	rev. 01	creation date 12/03/2019	language en	Page 1/1