

Data sheet for three-phase Squirrel-Cage-Motors SIMOTICS

Motor type: **DP200 HPS - Definite Purpose motor - NEMA Premium Efficiency**

FS: **5013S - 2p - 800 hp -**

Client order no.	Item-No.	Offer no.
Order no.	Consignment no.	Project
Remarks		

Electrical data

Class I Division 2 Gr. A, B, C or D T2D

U [V]	Δ/Y	f [Hz]	P [HP]	P [kW]	n [rpm]	I Load [Amps]					Nom. Eff Load [%]			Pwr. Factor Load [%]			Torque [lb-ft]	T _A /T _N LRT [%]	T _k /T _N BDT [%]
						4/4	3/4	1/2	0	LRC	4/4	3/4	2/4	4/4	3/4	2/4			
460	$\Delta \Delta$	60	800.00	596.80	3,585	870	667.30	478.00	210.00	6300.0	96.2	96.0	95.1	89.4	87.7	82.4	1172.0	250	290

Frame Type: 5013S	Type of constr.: (A) Foot Mounted Horizontal (IMB3)	Ins. Cl.: Standard Class H Insulation	Motor Prot.: K: Stator RTD's, 2 Per Phase	NEMA Des.: -/-	S.F.: 1.15
Mtr. WT: 5,798		Temp. Rise Cl.: B	Amb. Temp.: + 40 to °C @1000 m	kVA: G	IP 55


Mechanical data

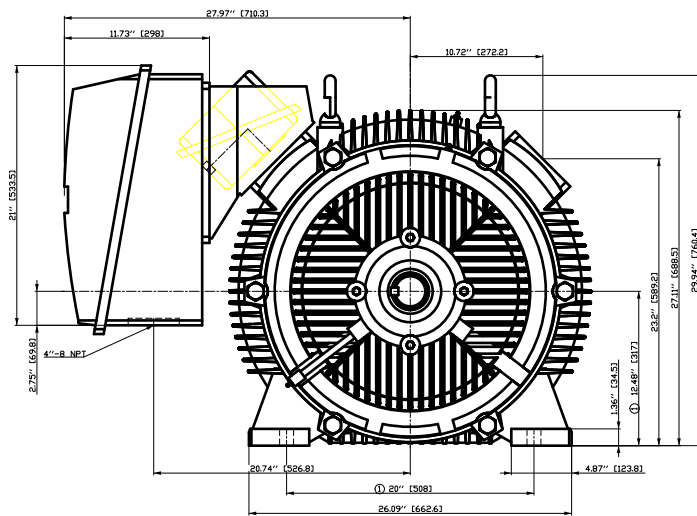
Sound level (SPL / SWL) at 60 Hz	93.0 dB(A) / 106.0 dB(A)		Thickener	Polyurea					
Octave Band Center Frequencies Hertz			Safe Stall Time Hot	19 s					
	250	500	1000	2000	4000	8000	Hz	Safe Stall Time Cold	24 s
SPL@3	87.0	77.0	76.0	75.0	75.0	70.0	dB(A)	Frame material	Cast iron
Moment of inertia	166.0 Lb-ft ²		Color, paint shade	RAL 7030					
Ext Load Inertia Capability:	560.0 Lb ft ²		Coating (paint finish)	Standard Alkyed + Epoxy (C2)					
Bearings			Ventilation Type						
Bearing DE NDE	6316 Z C3 S0		6316 Z C3 S0 insulated	Method of cooling	TEFC				
Bearing_Type	Ball Bearing		Ball Bearing	Direction of rotation	Bi-Directional				
AFBMA:	80BC03JP3		80BC03JP3	Fan Material	Polypropylene ESD				
Grease			VFD	CT: 4:1 VT: 20:1					
Capacity	9 oz		9 oz	Space heaters	without				
Grease Type:	Exxon Mobil EM		Brake:	-/-					

Terminal box

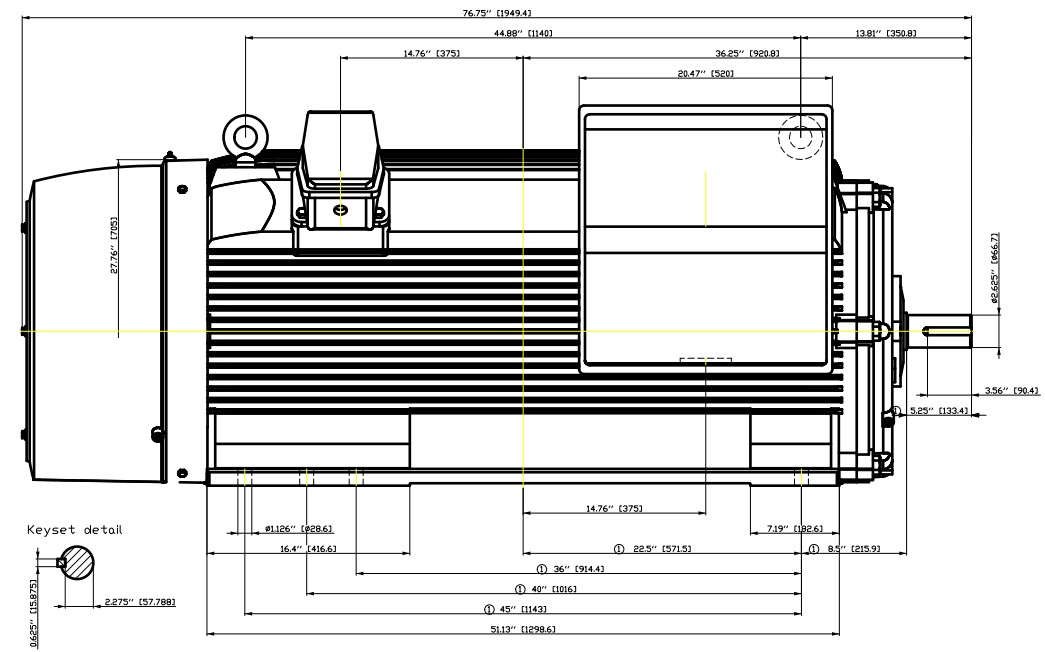
Lead Wire Connection	12 TERMINAL - Connection DELTA				Terminal box position	(1) LHS Mount - View From DE (F-1) - DE or Center of Motor
Voltage	L1	L1	L1	Connected together	Material of terminal box	Cast Iron
---	---	---	---	---	Cable entry	(1) 5" NPT
RUN	T12-T7-T6-T1	T10-T8-T4-T2	T11-T9-T5-T13	---		

Notes:
 I_L/I_N = locked rotor current / current nominal
 M_L/M_N = locked rotor torque / torque nominal
 M_L/M_N = break down torque / nominal torque
 3) Value is valid only for DOL operation with motor design IC411
 2) at rated power / at full load

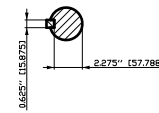
responsible dep. DI MC LVM	technical reference	created by DT Configurator	approved by	<i>Technical data are subject to change! There may be discrepancies between software and hardware versions</i>	
	document type datasheet	document status released	customer		
	title 1PC6521-5FA81-2AK1	document number	rev. 01	creation date 2022-04-08 01:08	language en
© Siemens AG 2022				Page 1/1	



① Tolerances according to NEMA std.
 All dimensions corresponding to assemblies and castings shall have a tolerance as per ISD 8062-3 DCTG 12.



Keyset detail

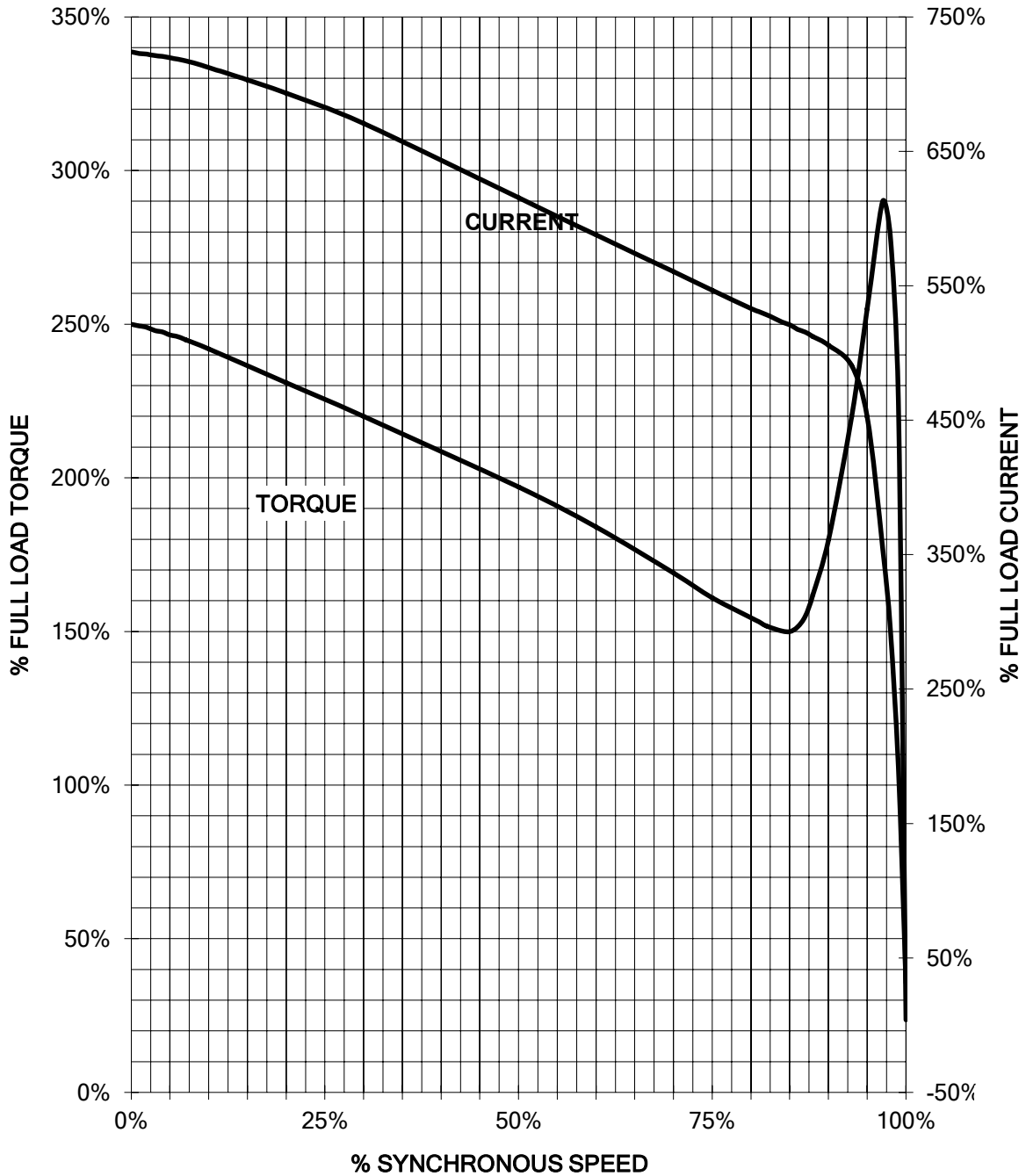


Tolerance	Surface	Material	Weight	Scale
			Ě	{ }
FUÓÍ i G-Ě ĚĚ FĚOSF Ě	Author Creator Approval Department Change Order Doc. State Revision	OVS T æ : ^æ@` } * MLFB I Ě Ě Ě Ě Index RS		
SIEMENS			Doc Type	
© Siemens AG 2018			Paper Size	ĚĚ
			Item No	
			Doc No	
			1st Language	^
			2nd Language	â^
			Ref. No	Ě
			Project No	Ě
			Sheet	F of F

SIEMENS INDUSTRY, INC.

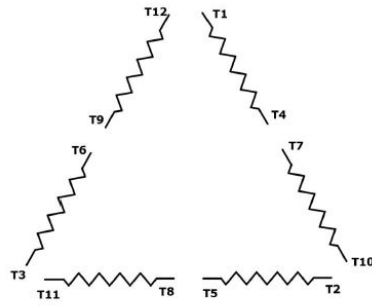
HP 800 VOLTS 460 RPM 3585 TYPE SD200
HZ 60 PHASE 3 FRAME 5013S NEMA _____

TORQUE & CURRENT VS. SPEED



Unrestricted CUSTOMER: _____ ORDER#: _____

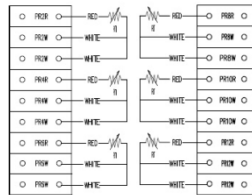
Main terminal diagram



12 LEAD DELTA		
LINES	CONNECT TOGETHER	CONN.
L1	T12 - T7 - T6 - T1	ΔΔ
L2	T10 - T8 - T4 - T2	
L2	T11 - T9 - T5 - T3	

Motor protection

3 WIRE STATOR RTDs



responsible dep.
DI MC LVM

technical reference

created by

approved by

Project

SIEMENS

document type
Wiring Diagram

title
1PC6521-5FA81-2AK1

document status
free

document number

customer