

BALDOR® • RELIANCE 

Product Information Packet

2048-151D

1.5HP,3600RPM,1PH,60HZ,3528L,3528L,TEFC

Part Detail							
Revision:	AV	Status:	PRD/A	Change #:		Proprietary:	No
Type:	AC	Elec. Spec:	35WGW811	CD Diagram:	CD0093	Mfg Plant:	
Mech. Spec:	B2-3	Layout:	B2LY0003	Poles:	02	Created Date:	
Base:	RG	Eff. Date:	12-15-2021	Leads:	4#16		

Specs			
Nameplate Output:	1.5		

Nameplate NP3118**CAT.NO.** 2048-151D**HP** 1.5**PHASE** 1**HZ** 60**SER.NO****SPEC.** B2-3A**VOLTS** 115/230**AMPS** 15/7.5**RPM** 3600

Parts List		
Part Number	Description	Quantity
HA6218A02	MOUNTING BRACKET	1.000 EA
91XN3816A16	3/8-16X1 HEX SOC CNTRSK	4.000 EA
HA6068A02	BRACKET, TOOL REST MACH	1.000 EA
10XN3118A14	5/16-18 X 7/8 HEX HEAD CAP	1.000 EA
35H713W811	1.5HP,3600RPM,1PH,60HZ,56CYZ,3528L,TEFC	1.000 EA
LB1008	LABEL, UL	1.000 EA
LB1014	WARNING LABEL, FOR BELT GRINDERS	1.000 EA
LB1119N	WARNING LABEL	1.000 EA
LB5003A01	TAG, CONNECTION	1.000 EA
B2PA1001	PACKAGING GROUP	1.000 EA
LC0279A01	1PH, DV, FIX, GRINDER, CONN FOR LV	1.000 EA
LB1618	PROPOSITION 65 WARNING LABEL 1-1/2 X 1/2	1.000 EA
HW1000A31	5/16 SAE FL WSHR NARROW, ID=.344, OD=.62	1.000 EA
HW1001A31	LOCKWASHER 5/16, ZINC PLT.591 OD, .319 I	1.000 EA
G8AP1003A01SP	TOOL REST	1.000 EA
10XN3816A24	3/8-16 X 1 1/2 HEX HD CAP SCREW	1.000 EA
HW1001A38	LOCKWASHER 3/8, ZINC PLT .688 OD, .382 I	1.000 EA
XY3816A12	3/8-16 FINISHED NUT	1.000 EA
HW1000A38	WASHER, 3/8" FLAT, SAE Z/P	2.000 EA
B2AP1005A02	PLATEN FOR BELT GRINDER WELKER	1.000 EA
12XN0832A08	8-32 X 1/2 HEX HD	2.000 EA
HW1001A08	WASHER, #8 SPLT LK, ZN	2.000 EA
B2FH2806A01SP	CONTACT WHEEL GUARD	1.000 EA
HA6225	SPACER (WELKER)	2.000 EA

Parts List (continued)		
Part Number	Description	Quantity
10XN2520A26	1/4-20X 1 5/8 HEX HD	2.000 EA
HW1001A25	LOCKWASHER 1/4, ZINC PLT .493 OD, .255 I	2.000 EA
B2AP5002A01	TRACK ARM & SHAFT ASSY	1.000 EA
B2FH2801A01SP	GRINDER GUARD, MACH	1.000 EA
10XN2520A12	1/4-20 X 3/4 HEX HEAD CAP	2.000 EA
HW1001A25	LOCKWASHER 1/4, ZINC PLT .493 OD, .255 I	2.000 EA
HW1000A25	1/4 SAE FLAT WASHER (FS)	2.000 EA
B2AP3003A01SP	IDLER WHEEL -- BELT GRINDER	1.000 EA
HW5000A51	N5000-156 RETAINER RING (F/S)	2.000 EA
BG6203E03	6203 D.SL,C3,POLYREX EM	2.000 EA
HW5010A32	RET RING 5100-66 (WALDES)	1.000 EA
B2AP1000A01	LATCH, IDLER ARM -- MACH	1.000 EA
HA7001A01	TORSION SPRING,4.5" FREE-LENGTH, .855 I.	1.000 EA
HA7002A01	TORSION SPRING, .843 FREELNGTH, .437 I.	1.000 EA
MN902	MANUAL FOR BELT GRINDERS	1.000 EA
10XN3816A20	3/8-16X1 1/4 HEX HD CAP	1.000 EA
80XN2520A06	1/4-20 X 3/8 SET SCREW	1.000 EA
HA5000A01	KNOB AND STUD ASSY	1.000 EA
B2AP5001A01SP	CONTACT WHEEL ASSY WITH RUBBER THREAD	1.000 EA
HW1000A75	WASHER, 3/4 FLAT, ZN	2.000 EA
XY7510A12SP	3/4-10 NUT R.H. HEX (NC) ZINC PLATED	1.000 EA
AB248	ABRASIVE BELT, 2" X 48" ZGR300501	1.000 EA
B2FH2810A01SP	GUARD (HALF) MACHINED, USE W/B2FH2811A01	1.000 EA
B2FH2811A01	GUARD (HALF) MACHINED, USE W/B2FH2810A01	1.000 EA

Product Information Packet: 2048-151D - 1.5HP,3600RPM,1PH,60HZ,3528L,3528L,TEFC

51XN1032A12	10-32 X 0.750 HX WS SL SR	3.000 EA
HW1023A10	WASHER,#10 INT/EX TH LK, ZN X TDR#2	3.000 EA
XY1032A02	10-32 HEX NUT DIRECTIONAL SERRATION	3.000 EA
93XN1032A12	10-32X3/4 SHOULDER/TYP T TDR 1	2.000 EA
HW1003A10	WASHER, #10 EX TH LK, ZN X	2.000 EA
B2FH2808A01SP	GUARD COVER, MACH	1.000 EA
93XN1032A12	10-32X3/4 SHOULDER/TYP T TDR 1	2.000 EA
HW1003A10	WASHER, #10 EX TH LK, ZN X	2.000 EA
B2FH2809A01SP	GUARD COVER, MACH	1.000 EA
93XN1032A08	10-32X1/2 SHOULDER/TYP T	1.000 EA
HW1003A10	WASHER, #10 EX TH LK, ZN X	1.000 EA
MG1000G01	MUNSELL 5.93PB 3.81/ 2.71	0.017 GA

Accessories		
Part Number	Description	Multiplier
GA16	PEDESTAL INDUSTRIAL, CAST IRON 6" - 10"	A8
GA14	PEDESTAL FABRICATED STEEL W/SHELVES	A8
GA20	PEDESTAL INDUSTRIAL, CAST IRON 8"-14"	A8
GA20E	PEDESTAL LIGHT INDUSTRIAL,STEEL	A8
AB248	2' X 48' 80 GRIT GRINDER BELT	A8
BQ1-015-CC	1PH Brake, NEMA 1,110-125 VAC, 50/60Hz	P1
BQ1-015-CP	1PH Brake, Panel 110-125 VAC, 50/60 Hz	P1
BQ2-015-CC	1PH Brake,NEMA 1 208-230 VAC,50/60Hz	P1
BQ2-015-CP	1PH Brake, Panel 208-230 VAC, 50/60 Hz	

AC Induction Motor Performance Data

Record # 9881

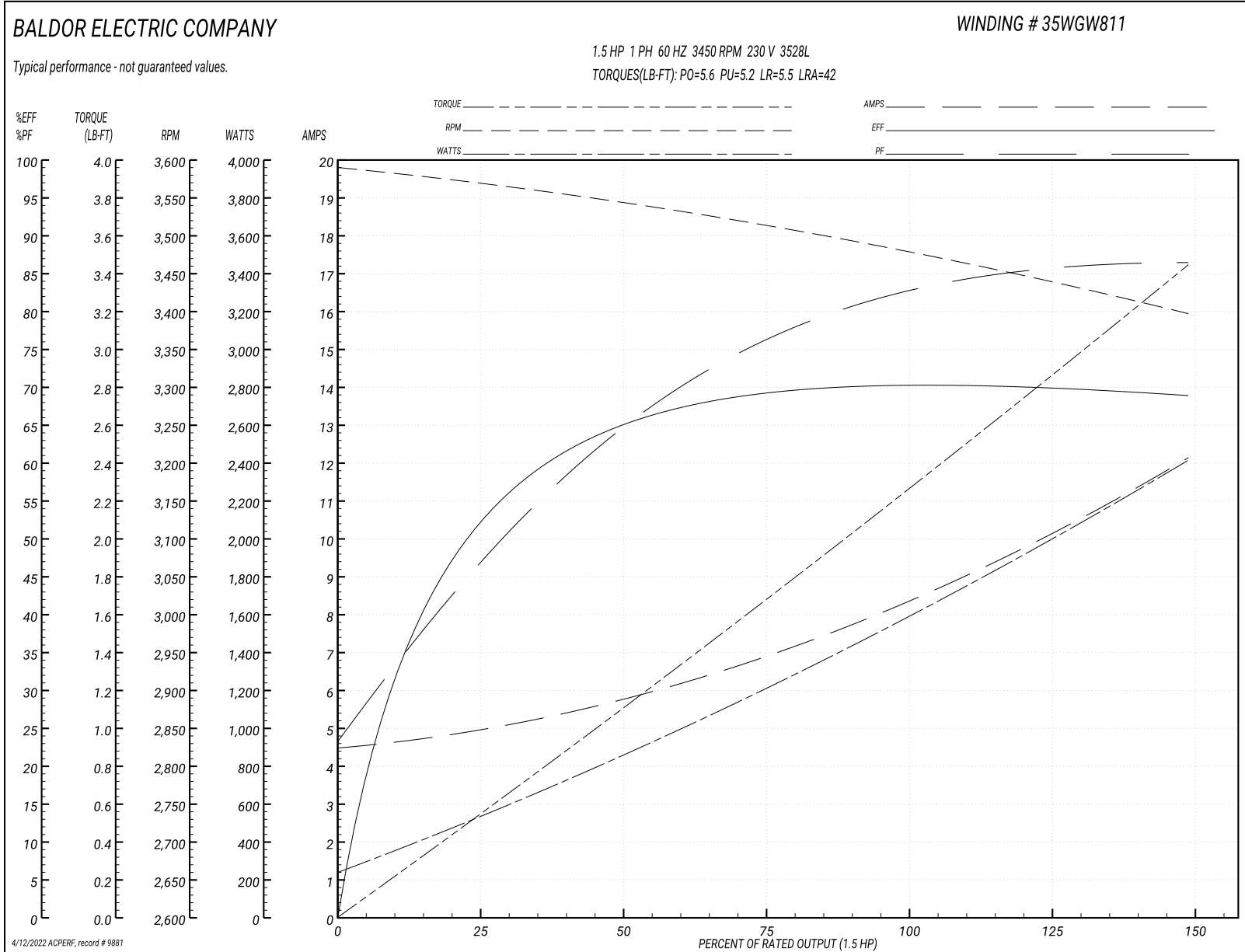
Typical performance - not guaranteed values

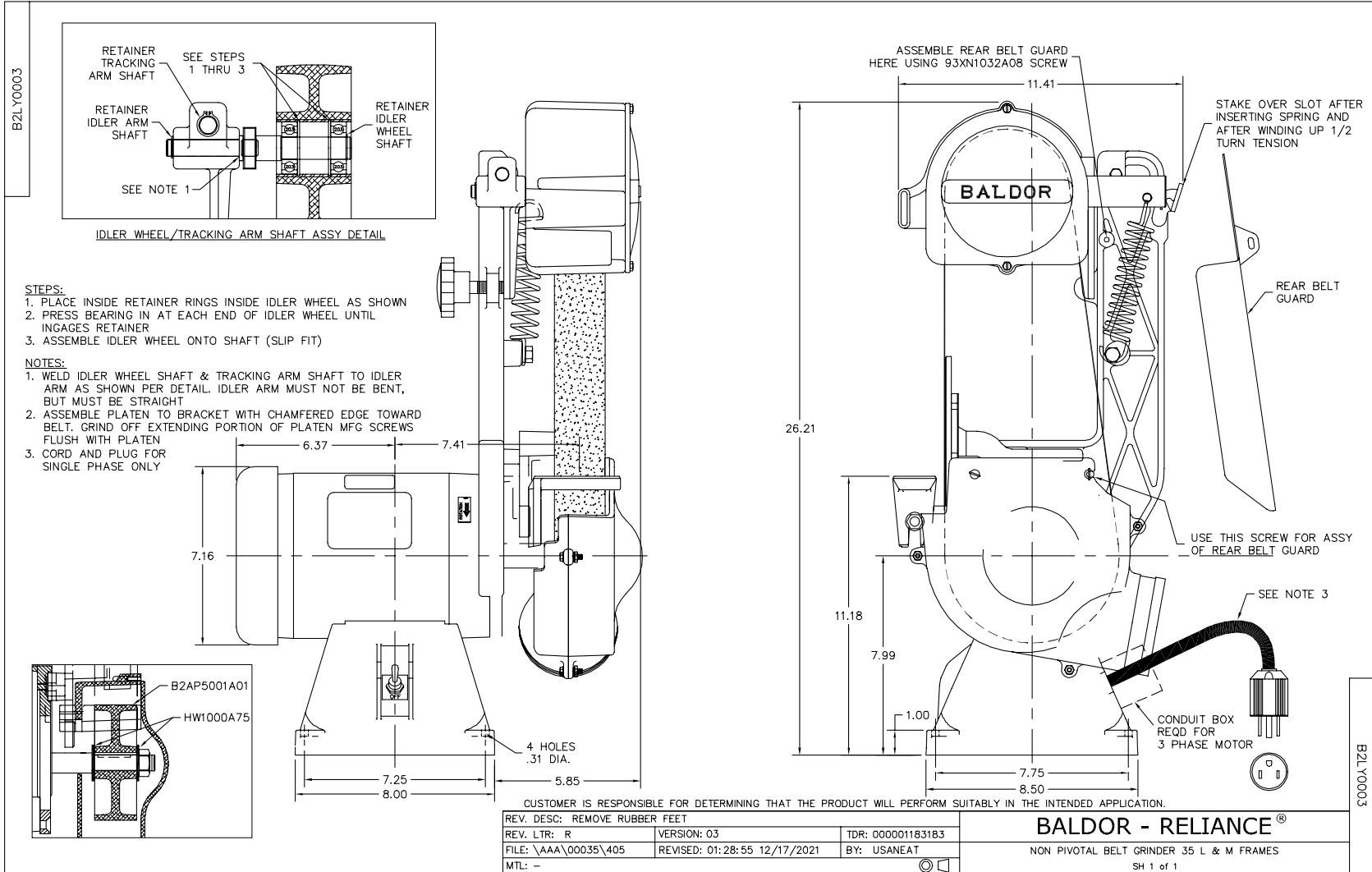
Winding: 35WG811-R001		Type: 3528L	Enclosure: TEFC		
Nameplate Data			230 V, 60 Hz: High Voltage Connection		
Rated Output (HP)	1.5	Full Load Torque	2.3 LB-FT		
Volts	115/230	Start Configuration	direct on line		
Full Load Amps	15/7.5	Breakdown Torque	5.6 LB-FT		
R.P.M.	3450	Pull-up Torque	5.2 LB-FT		
Hz	60 Phase	1	Locked-rotor Torque	5.5 LB-FT	
NEMA Design Code	L	KVA Code	H	Starting Current	42 A
Service Factor (S.F.)	1	No-load Current	4.5 A		
NEMA Nom. Eff.	70	Power Factor	82	Line-line Res. @ 25°C	1.26 Ω A Ph 1.23 Ω B Ph
Rating - Duty	40C AMB-CONT		Temp. Rise @ Rated Load	70°C	
S.F. Amps			Temp. Rise @ S.F. Load	84°C	

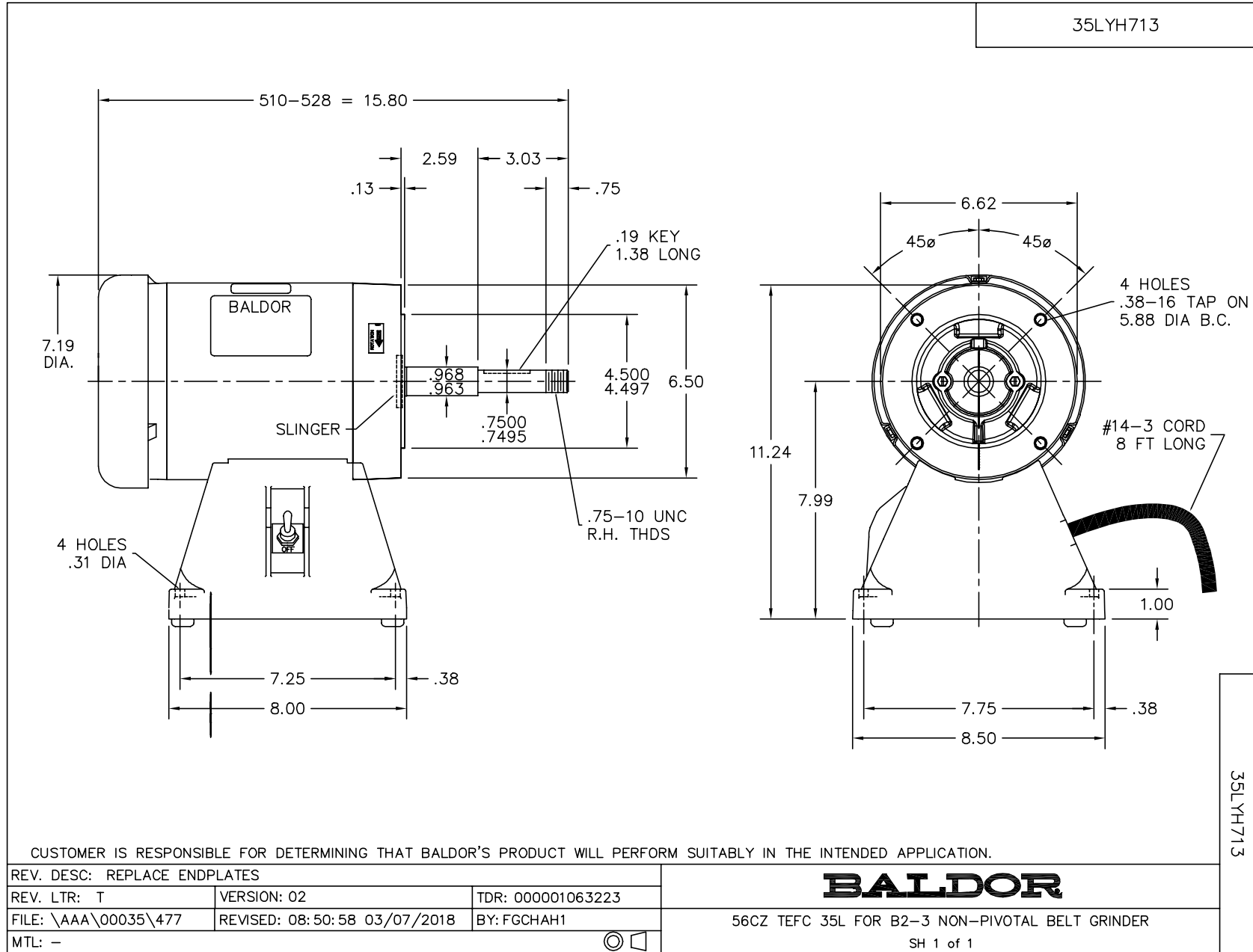
Load Characteristics 230 V, 60 Hz, 1.5 HP

% of Rated Load	25	50	75	100	125	150	S.F.
Power Factor	47	64	73	80	84	86	82
Efficiency	51.9	65.3	68.4	71.2	70.6	68.4	70.8
Speed	3567	3541	3514	3475	3439	3397	3453
Line amperes	5	5.8	6.9	8.6	10.2	12.1	9.6

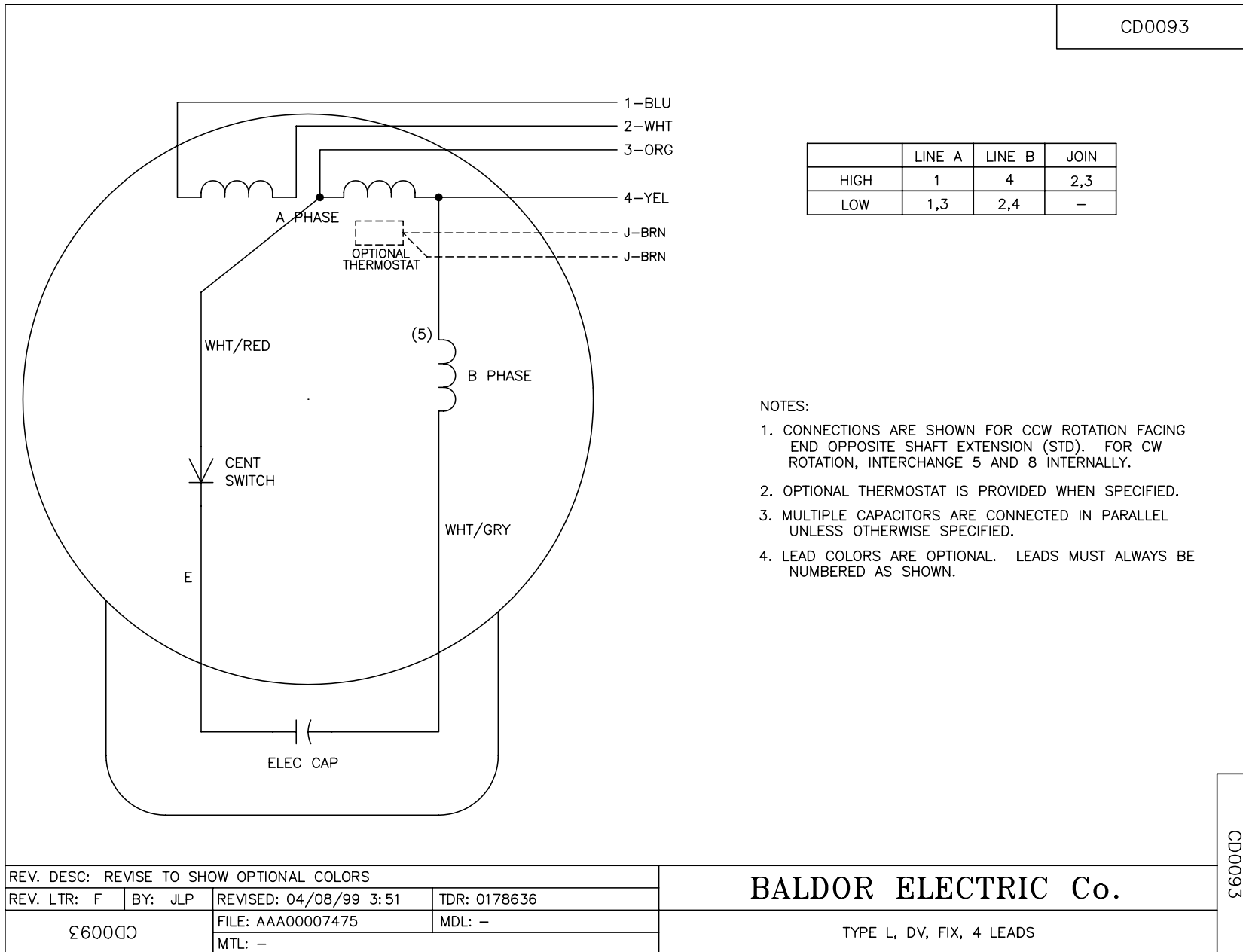
Performance Graph at 230V, 60Hz, 1.5HP Typical performance - Not guaranteed values







CD0093



REV. DESC: REVISE TO SHOW OPTIONAL COLORS			
REV. LTR: F	BY: JLP	REVISED: 04/08/99 3:51	TDR: 0178636
Ω600D		FILE: AAA00007475	MDL: -
		MTL: -	

BALDOR ELECTRIC Co.

TYPE L, DV, FIX, 4 LEADS

CD0093