

BALDOR® • RELIANCE 

Product Information Packet

248-181TD

1.5HP,3600RPM,1PH,60HZ,3535LC,3535LC

Part Detail							
Revision:	AP	Status:	PRD/A	Change #:		Proprietary:	No
Type:	AC	Elec. Spec:	G8WG0350	CD Diagram:	CD0728	Mfg Plant:	
Mech. Spec:	B2-6	Layout:	B2LY0006	Poles:	02	Created Date:	
Base:	RG	Eff. Date:	01-10-2022	Leads:	4#16 A PH,1#18 B PH		

Specs			
Nameplate Output:	1.5		
Product Style:	BELT SANDER		

Nameplate NP3361L

CAT.NO.	248-181TD		
HP	1.5	VOLTS	115/230
PHASE	1	AMPS	15/7.5
HZ	60	RPM	3600
SER.NO			
SPEC.	B2-6D		
BLANK			

Parts List		
Part Number	Description	Quantity
HA6219A01	BELT GRNDR ADAPTOR, MACH	1.000 EA
91XN3816A16	3/8-16X1 HEX SOC CNTRSK	4.000 EA
HA6220A01	PIVOTAL BRACKET, MACH	1.000 EA
MG1000G01	MUNSELL 5.93PB 3.81/ 2.71	0.017 GA
HA6218A01	MOUNTING BRACKET, MACH	1.000 EA
91XN3816A16	3/8-16X1 HEX SOC CNTRSK	4.000 EA
RB4011A01	BEARING RETAINER, STAMPED (PLATED)	1.000 EA
10XN2520A08	1/4-20X1/2 HEX HEAD CAP	3.000 EA
HW1001A25	LOCKWASHER 1/4, ZINC PLT .493 OD, .255 I	3.000 EA
HA6222	PULL KNOB RETAINER PLATE	1.000 EA
53XN1032A06	10-32X3/8 PAN HD SLTD SER	2.000 EA
HA6068A02	BRACKET, TOOL REST MACH	1.000 EA
10XN3118A14	5/16-18 X 7/8 HEX HEAD CAP	1.000 EA
HW1000A31	5/16 SAE FL WSHR NARROW, ID=.344, OD=.62	1.000 EA
HW1001A31	LOCKWASHER 5/16, ZINC PLT.591 OD, .319 I	1.000 EA
G8AP1003A01SP	TOOL REST	1.000 EA
10XN3816A24	3/8-16 X 1 1/2 HEX HD CAP SCREW	1.000 EA
HW1001A38	LOCKWASHER 3/8, ZINC PLT .688 OD, .382 I	1.000 EA
XY3816A12	3/8-16 FINISHED NUT	1.000 EA
B2AP1005A02	PLATEN FOR BELT GRINDER WELKER	1.000 EA
12XN0832A08	8-32 X 1/2 HEX HD	2.000 EA
HW1001A08	WASHER, #8 SPLT LK, ZN	2.000 EA
B2FH2806A01SP	CONTACT WHEEL GUARD	1.000 EA
10XN2520A26	1/4-20X 1 5/8 HEX HD	2.000 EA

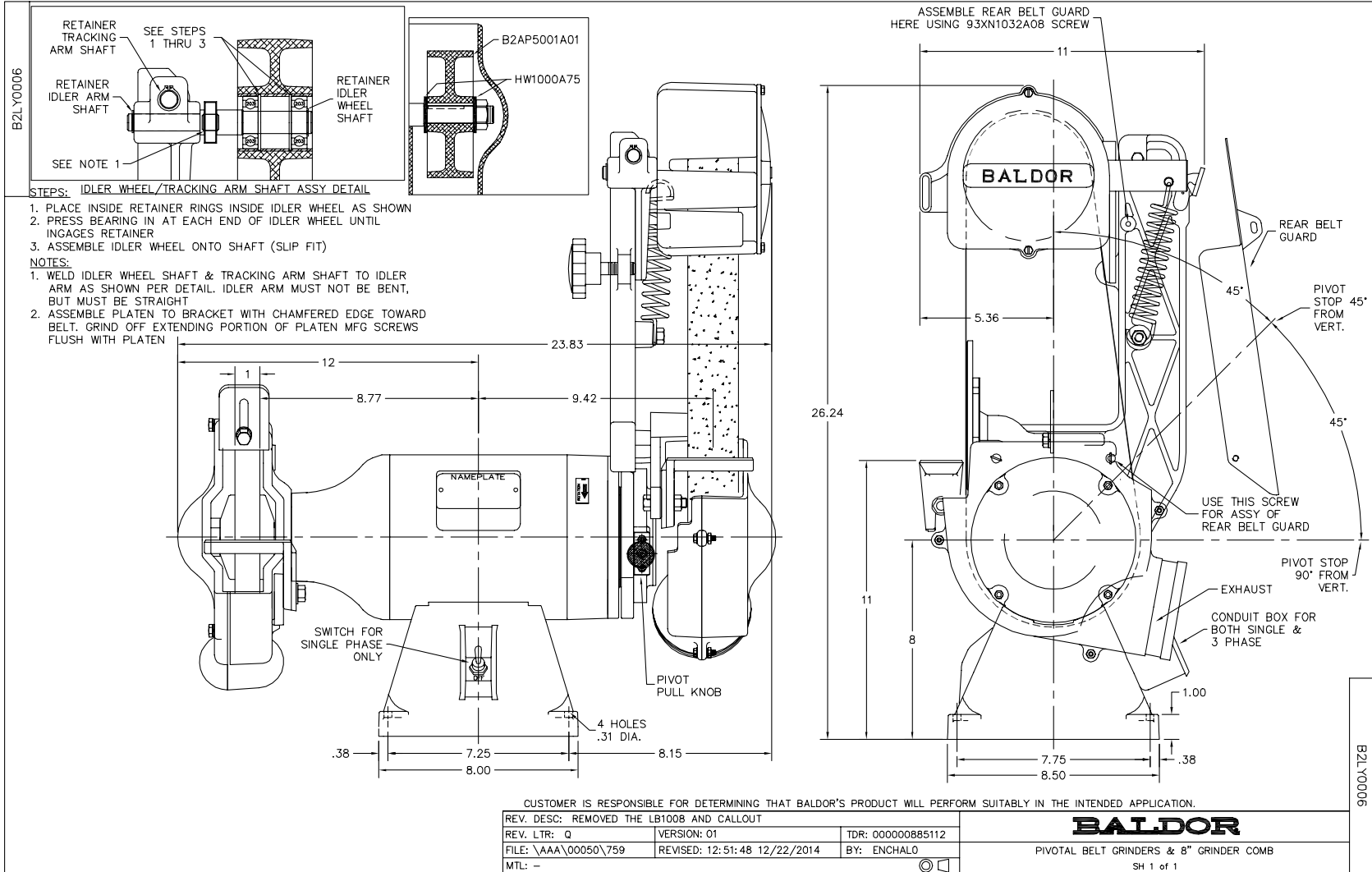
Parts List (continued)		
Part Number	Description	Quantity
HW1001A25	LOCKWASHER 1/4, ZINC PLT .493 OD, .255 I	2.000 EA
B2AP5002A01	TRACK ARM & SHAFT ASSY	1.000 EA
B2FH2801A01SP	GRINDER GUARD, MACH	1.000 EA
10XN2520A12	1/4-20 X 3/4 HEX HEAD CAP	2.000 EA
HW1001A25	LOCKWASHER 1/4, ZINC PLT .493 OD, .255 I	2.000 EA
HW1000A25	1/4 SAE FLAT WASHER (FS)	2.000 EA
HA3504A01	A-432 TRKNG ARM PIVOT SH.(AUTO.MACH)	2.000 EA
HA6134A01SP	TRACKING ARM, MACH	1.000 EA
B2AP3003A01SP	IDLER WHEEL -- BELT GRINDER	1.000 EA
HW5000A51	N5000-156 RETAINER RING (F/S)	2.000 EA
BG6203E03	6203 D.SL,C3,POLYREX EM	2.000 EA
HW5010A27	RETAINER RING 5100-50 (WALDES)	2.000 EA
B2AP1000A01	LATCH, IDLER ARM -- MACH	1.000 EA
HA7001A01	TORSION SPRING,4.5" FREE-LENGTH, .855 I.	1.000 EA
HA7002A01	TORSION SPRING, .843 FREELNGTH, .437 I.	1.000 EA
10XN3816A20	3/8-16X1 1/4 HEX HD CAP	1.000 EA
80XN2520A06	1/4-20 X 3/8 SET SCREW	1.000 EA
HA5000A01	KNOB AND STUD ASSY	1.000 EA
80XN1032A06	10-32 X 3/8 SET SC HEX SOCK	1.000 EA
B2AP5001A01SP	CONTACT WHEEL ASSY WITH RUBBER THREAD	1.000 EA
HW1000A75	WASHER, 3/4 FLAT, ZN	2.000 EA
XY7510A12SP	3/4-10 NUT R.H. HEX (NC) ZINC PLATED	1.000 EA
HA3401A01	A-443 STUD (WELKER)	1.000 EA
HW2400A01	DK-2 FLUTED PL KNOB REID	1.000 EA

Product Information Packet: 248-181TD - 1.5HP,3600RPM,1PH,60HZ,3535LC,3535LC

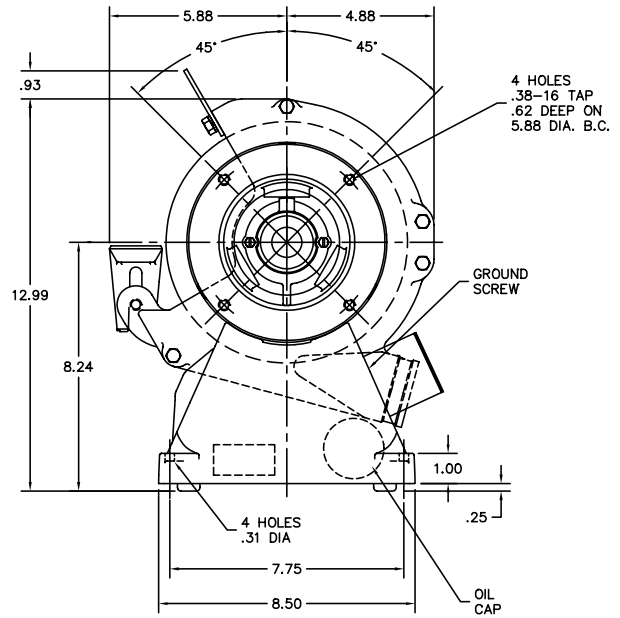
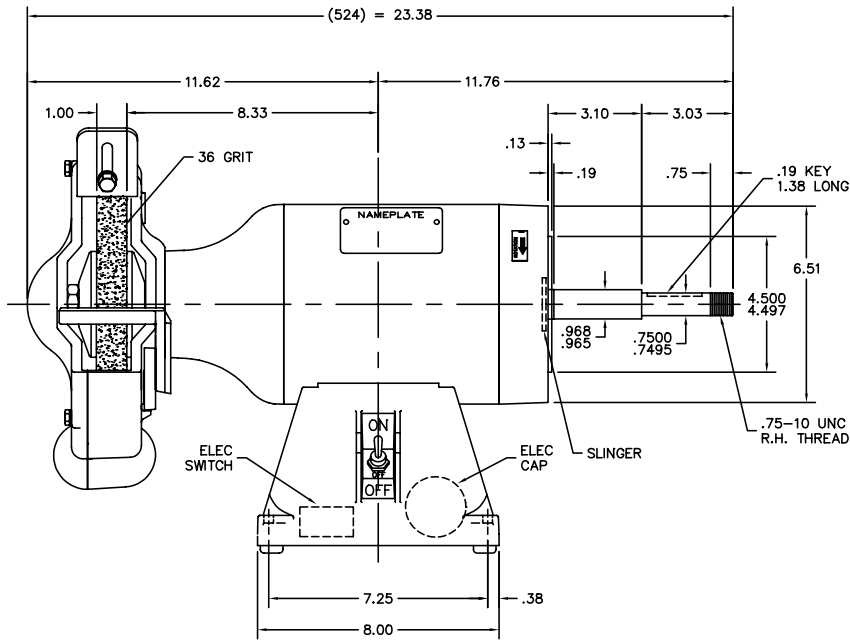
AB248	ABRASIVE BELT, 2" X 48" ZGR300501	1.000 EA
B2FH2810A01SP	GUARD (HALF) MACHINED, USE W/B2FH2811A01	1.000 EA
B2FH2811A01	GUARD (HALF) MACHINED, USE W/B2FH2810A01	1.000 EA
51XN1032A12	10-32 X 0.750 HX WS SL SR	3.000 EA
HW1023A10	WASHER,#10 INT/EX TH LK, ZN X TDR#2	3.000 EA
XY1032A02	10-32 HEX NUT DIRECTIONAL SERRATION	3.000 EA
93XN1032A12	10-32X3/4 SHOULDER/TYPE T TDR 1	2.000 EA
HW1003A10	WASHER, #10 EX TH LK, ZN X	2.000 EA
B2FH2808A01SP	GUARD COVER, MACH	1.000 EA
93XN1032A12	10-32X3/4 SHOULDER/TYPE T TDR 1	2.000 EA
HW1003A10	WASHER, #10 EX TH LK, ZN X	2.000 EA
B2FH2809A01SP	GUARD COVER, MACH	1.000 EA
93XN1032A08	10-32X1/2 SHOULDER/TYPE T	1.000 EA
HA6223	LOCKING PIN (WELKER)	1.000 EA
HW2404A01	KNOB, #597 DIMCO-GRAY	1.000 EA
HA7005A02	C0360-032-0940S,ASSC.SPRGSTLS.STEEL,.94	1.000 EA
LB5003A01	TAG, CONNECTION	1.000 EA
G8-351-350	35LC 2P GRNDR	1.000 EA
NP3361L	ALUM NP FOR 8" UTILITY GRINDERS-BUFFERS	1.000 EA
B2PA1001	PACKAGING GROUP	1.000 EA
MN902	MANUAL FOR BELT GRINDERS	1.000 EA
LB1618	PROPOSITION 65 WARNING LABEL 1-1/2 X 1/2	1.000 EA

Accessories		
Part Number	Description	Multiplier
GA16	PEDESTAL INDUSTRIAL, CAST IRON 6" - 10"	A8
GA14	PEDESTAL FABRICATED STEEL W/SHELVES	A8
GA20	PEDESTAL INDUSTRIAL, CAST IRON 8"-14"	A8
GA20E	PEDESTAL LIGHT INDUSTRIAL,STEEL	A8
AB248	2' X 48' 80 GRIT GRINDER BELT	A8
BQ1-015-CC	1PH Brake, NEMA 1,110-125 VAC, 50/60Hz	P1
BQ1-015-CP	1PH Brake, Panel 110-125 VAC, 50/60 Hz	P1
BQ2-015-CC	1PH Brake,NEMA 1 208-230 VAC,50/60Hz	P1
BQ2-015-CP	1PH Brake, Panel 208-230 VAC, 50/60 Hz	

No performance data has been
assigned to this product.



GBLY0351



CUSTOMER IS RESPONSIBLE FOR DETERMINING THAT MOTOR PERFORMANCE IS SUITABLE IN THE APPLICATION.

REV. DESC: OMITTED FELT WSHR HA1025A03 & CHG'D TO SEALED BRGS			
REV. LTR: F	BY: SSS	REVISED: 10/02/00 1:27	TDR: 0212666
FILE: AAA00066705		REF: -	
MTL: -			

BALDOR ELECTRIC Co.

8" GRINDER 35LC FOR B2-6 PIVOTAL BELT GRINDER

GBLY0351

