

**BALDOR® • RELIANCE** 

**Product Information Packet**

**380T**

**.33/.17HP,3450/1725RPM,1PH,60HZ,3528L**

Part Detail							
Revision:	AS	Status:	PRD/A	Change #:		Proprietary:	No
Type:	AC	Elec. Spec:	L5WG0160	CD Diagram:	CD0349	Mfg Plant:	
Mech. Spec:	L35-242	Layout:	L5LY0242	Poles:	02/04	Created Date:	
Base:	RG	Eff. Date:	12-15-2021	Leads:	3#18		

Specs			
Nameplate Output:	.33/.17		
Product Style:	DENTAL LATHE		

## Nameplate NP3356L

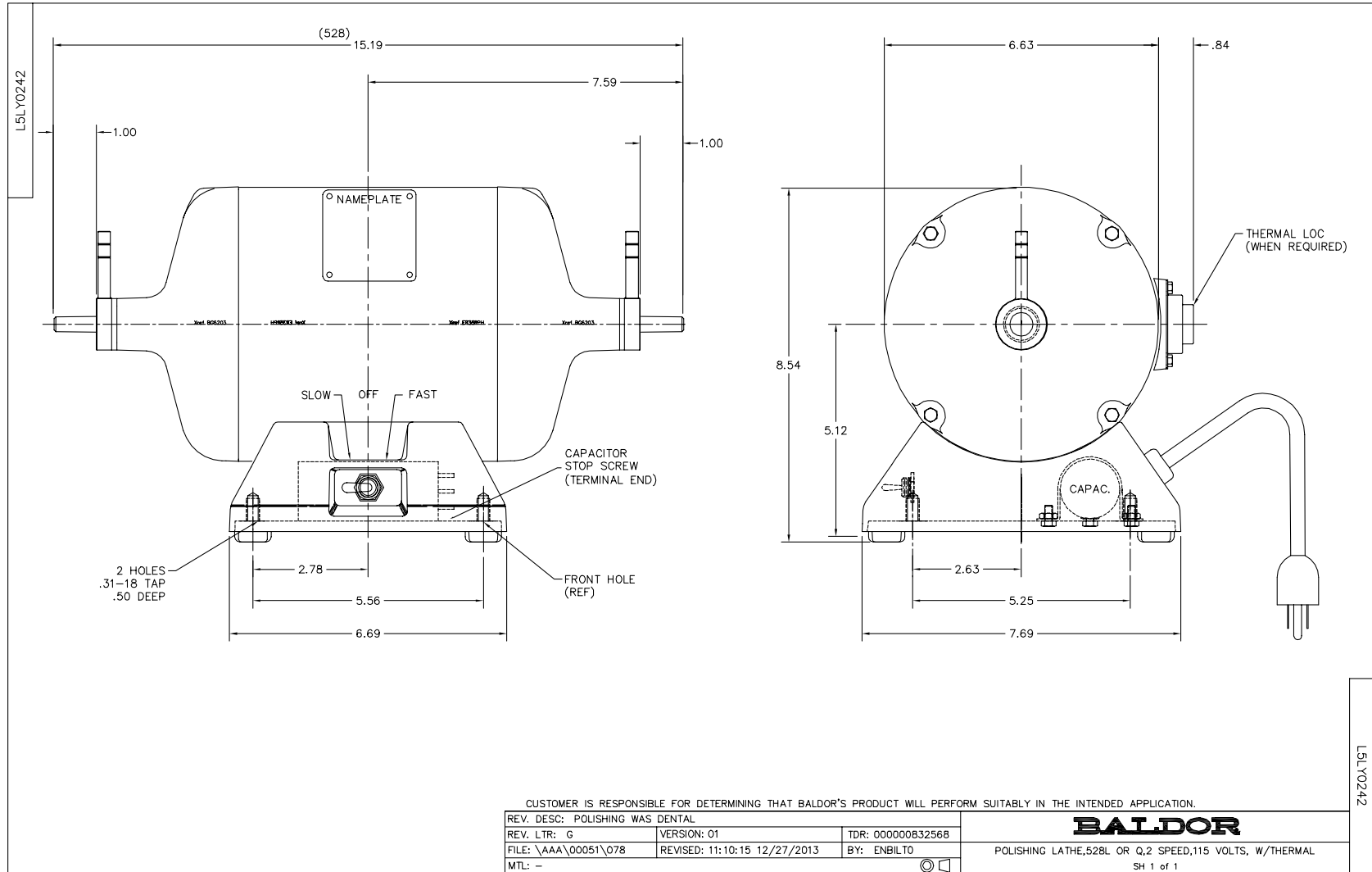
<b>CAT.NO.</b>	380T		
<b>SPEC.</b>	L35-242-160		
<b>HP</b>	.33/.17		
<b>VOLTS</b>	115		
<b>PHASE</b>	1	<b>AMPS</b>	3.3/2.1
<b>CYCLE</b>	60		
<b>RPM</b>	3450/1725		
<b>CL</b>	F		
<b>RATING</b>	40C AMB-CONT		
<b>SERIAL</b>			

Parts List		
Part Number	Description	Quantity
SA037700	SA L35-242-160	1.000 EA
RA033725	RA L35-242-160	1.000 EA
EC1108A01	ELEC CAP, 108-130 MFD, 125V, 1.48D X 2.	1.000 EA
L5BA3000A01	BASE, MACH	1.000 EA
11XW1032G06	10-32 X .38, TAPTITE II, HEX WSHR SLTD U	1.000 EA
HW3001B01	BRASS CUP WASHER, FOR #10 SCREW	1.000 EA
L5EP3900A01SP	ENDPLATE, MACH	1.000 EA
HA6105A01	DR-178A L.H.EJECT.W/HANDL (WELKER)	1.000 EA
HA1025A04	FELT WSH 1.25OD/.492ID X .125	1.000 EA
HA3100A14	THRUBOLT 10-32 X 7.875	4.000 EA
LD5001A02	CORD & PLUG ASSY 18-3 SJT .33 DIA. 10 AM	1.000 EA
WD4102A01	SR-6L-1 HEYCO STRN RELIEF OR 23MPO6L10 M	1.000 EA
SP9019A01	SP9019 SWITCH W/6 LEADS	1.000 EA
51XW0832A07	8-32 X .44, TAPTITE II, HEX WSHR SLTD SE	2.000 EA
HA6003A33ZP	CLAMP, CAPACITOR ZINC PLATED	1.000 EA
51XN1032A04	10-32 X 0.25 HX WS SL SR	2.000 EA
HW1001A10	WASHER, #10 SPLT LK, ZN X	2.000 EA
XY1032A02	10-32 HEX NUT DIRECTIONAL SERRATION	2.000 EA
HW5100A03	WAVY WASHER (W1543-017)	1.000 EA
L5EP3900A02	ENDPLATE, MACH	1.000 EA
HA6105A02	DR-178B R.H.EJECT.W/HANDL (WELKER)	1.000 EA
HA1025A04	FELT WSH 1.25OD/.492ID X .125	1.000 EA
XY1032A02	10-32 HEX NUT DIRECTIONAL SERRATION	4.000 EA
L5CB4500A01	BASE COVER, STAMPED (PLATED YELLOW)	1.000 EA

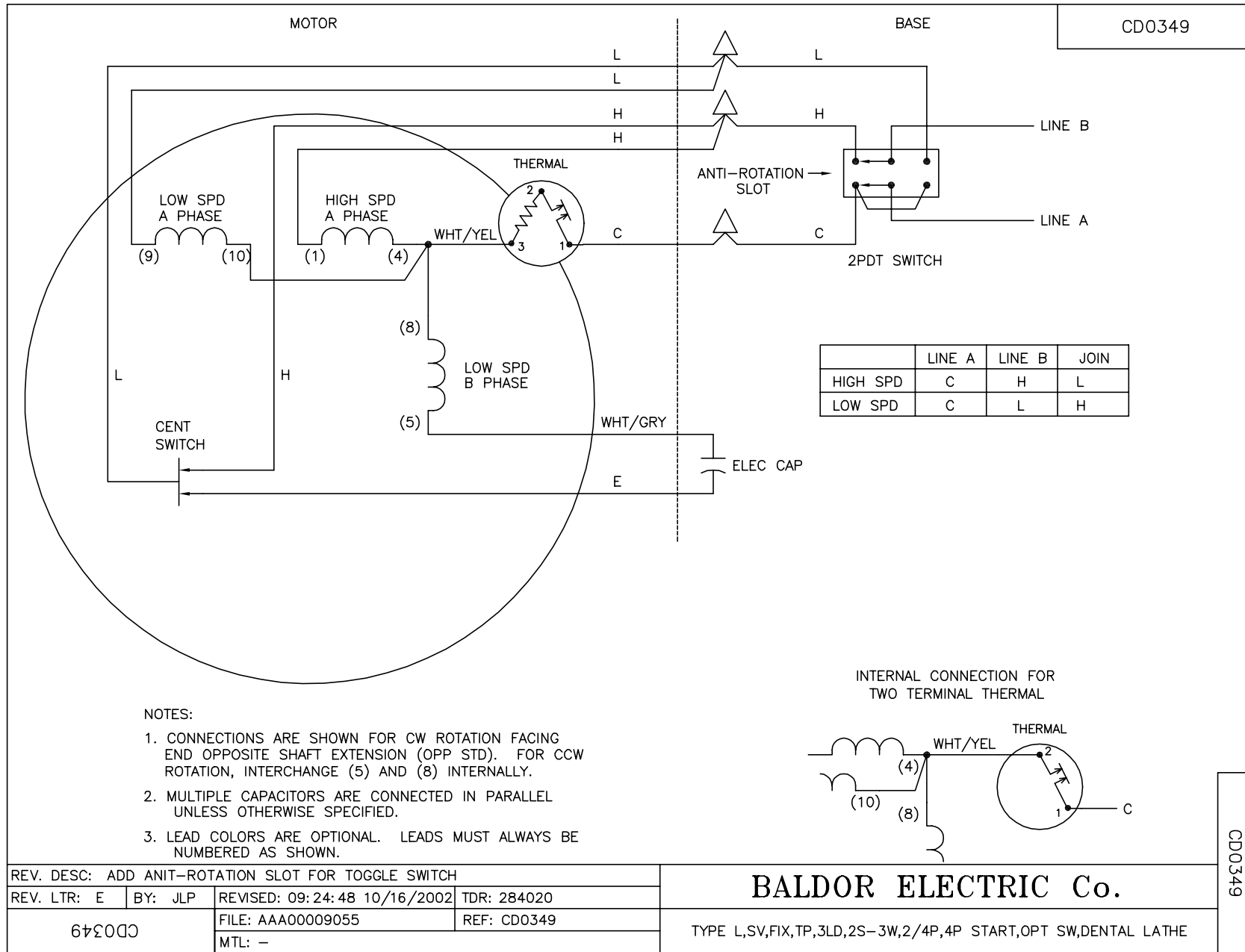
Parts List (continued)		
Part Number	Description	Quantity
RM1005A01SP	BUMPER- #2089 (R-R CO)	4.000 EA
15XF1032A10	10-32X5/8 PIN HD PHL TY FSEE JT	4.000 EA
85XU0407A04	#4-7 X 1/4 DRIVE PIN	4.000 EA
51XB1214A10	12-14 X 5/8HX WS SL SR TYBX	3.000 EA
HW1000A12X	#12 SAE FLAT WASHER	3.000 EA
WD4006A01	WIRE JOINT,T&B RB-4 OR RB-44	1.000 EA
MJ1000A02	GREASE, MOBIL POLYREX EM - 124047	0.050 LB
HW5100A03	WAVY WASHER (W1543-017)	1.000 EA
HA1000A16	DR2567A .02 BRG GUARD B N	4.000 EA
MG1000G18	PAINT, 189-905 SILVER HAMR	0.017 GA
LB1087	LABEL,MANUAL RESET (ROLL LABEL)	1.000 EA
LB1119N	WARNING LABEL	1.000 EA
LB1208	WARNING LABEL FOR POLISHING LATHE MOTORS	1.000 EA
NP3356L	ALUM LATHE W/THERMAL NO LOGOS	1.000 EA
LC0046	CONN LABEL, 1PH, SV, FIX, 2S-3W, THERMAL	1.000 EA
SP5186A04	TORQ STA SW LEAD CONFIG, 2-SPD DENTAL LA	1.000 EA
36PA1000	PKG GRP, PRINT PK1016A06	1.000 EA
MN904	Baldor Polishing Lathes 6/05	1.000 EA
LB1618	PROPOSITION 65 WARNING LABEL 1-1/2 X 1/2	1.000 EA

<b>Accessories</b>		
<b>Part Number</b>	<b>Description</b>	<b>Multiplier</b>
R1	DR-3544 R1 RH CHUCK	A8
R2	DR-3546B R2 RH WHEEL CHUCK	A8
R5A	BURR CHUCK-RH	A8
R6	ARBOR BAND CHUCK	A8
L3	DR-3545 LH HD WHEEL CHUCK	A8
L4	DR-3547B L4 LH SF WHEEL CHUCK	A8

No performance data has been  
assigned to this product.







REV. DESC: ADD ANIT-ROTATION SLOT FOR TOGGLE SWITCH			
REV. LTR: E	BY: JLP	REVISED: 09:24:48 10/16/2002	TDR: 284020
642000		FILE: AAA00009055	REF: CD0349
CD0349		MTL: -	

**BALDOR ELECTRIC Co.**

TYPE L,SV,FX,TP,3LD,2S-3W,2/4P,4P START,OPT SW,DENTAL LATHE

CD0349