

BALDOR® • RELIANCE 

Product Information Packet

409B

1.5HP, 1500/1800RPM, 3PH, 50/60HZ, 3528M

Part Detail							
Revision:	AT	Status:	PRD/A	Change #:		Proprietary:	No
Type:	AC	Elec. Spec:	G0WG0004	CD Diagram:	CD0005	Mfg Plant:	
Mech. Spec:	G10-167	Layout:	G0LY0167	Poles:	04	Created Date:	
Base:	RG	Eff. Date:	12-15-2021	Leads:	9#18 12" LG		Y

Specs			
Nameplate Output:	1.5		
Product Style:	BUFFER		

Nameplate NP3411L

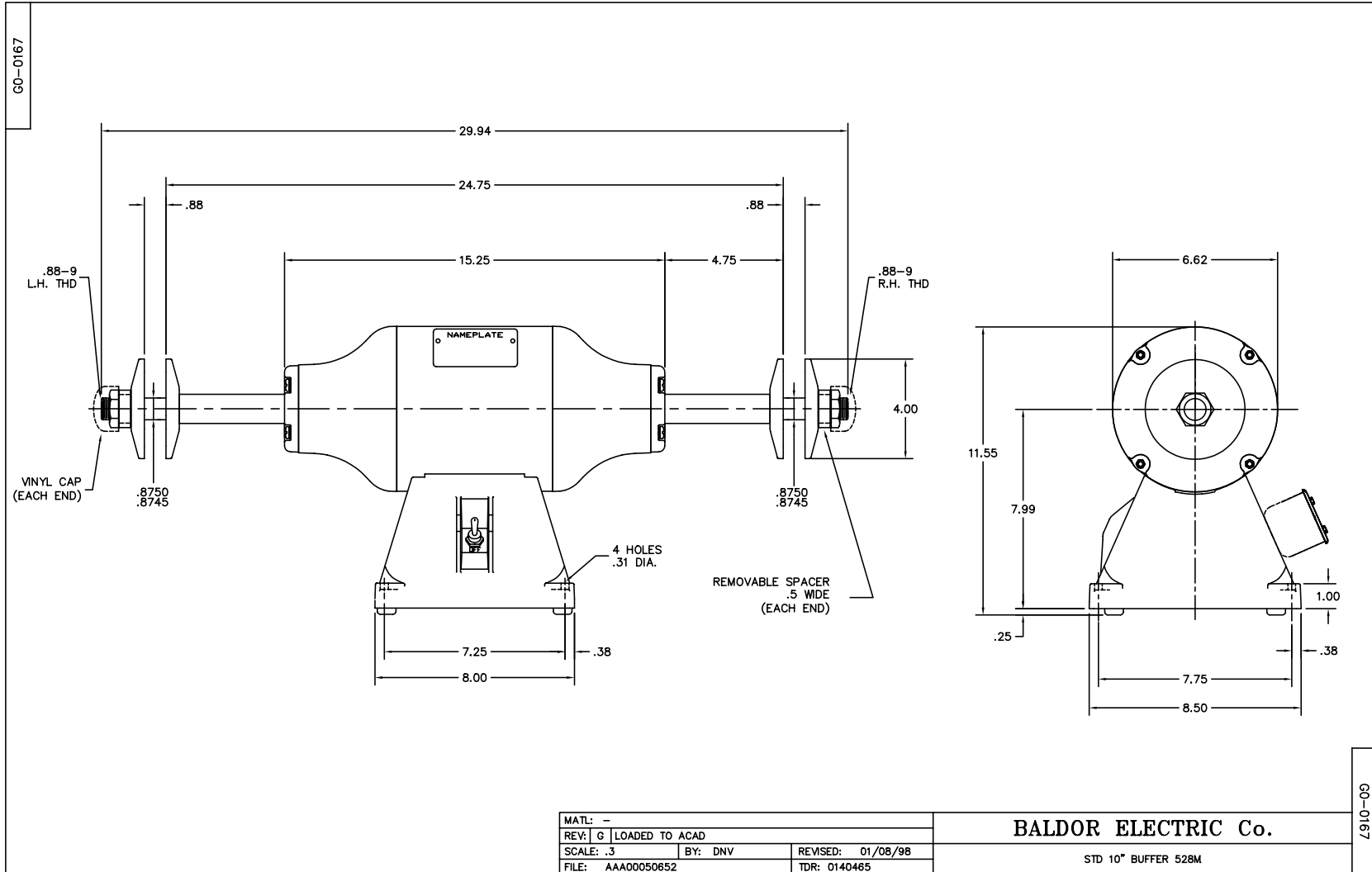
CAT.NO.	409B		
HP	1.5	VOLTS	208-230/460
PHASE	3	AMPS	2.6/1.3
HZ	50//60	RPM	1500//1800
SER.NO			
SPEC.	G10-167-4		
BLANK			

Parts List		
Part Number	Description	Quantity
SA037587	SA G10-167-4	1.000 EA
RA033612	RA G10-167-4	1.000 EA
G8BA3000A01	BASE, MACH	1.000 EA
19XX2510A14	1/4-10 X 7/8 HEX HD PLASTITE SCREW	4.000 EA
HW1000A25	1/4 SAE FLAT WASHER (FS)	4.000 EA
G8CB4500A02	G8-272 BASE COVER,STPD X PLATED	1.000 EA
51XW0832A07	8-32 X .44, TAPTITE II, HEX WSHR SLTD SE	2.000 EA
RM1005A01SP	BUMPER- #2089 (R-R CO)	4.000 EA
15XF1032A10	10-32X5/8 PIN HD PHL TY FSEE JT	4.000 EA
G8EP3900A01SP	ENDPLATE, MACH	2.000 EA
HW5100A06	W2420-025 WVY WSHR (WB)	1.000 EA
HW5100A06	W2420-025 WVY WSHR (WB)	1.000 EA
HA1000A34	DR2463A .02 BRG GUARD B N	4.000 EA
HA1025A21	WSHR,FELT .125" THK	2.000 EA
19XW2520A12	SCREW,1/4-20X3/4 TAPTITE-II OR ROLOC 91	8.000 EA
HA3100A14	THRUBOLT 10-32 X 7.875	4.000 EA
XY1032A02	10-32 HEX NUT DIRECTIONAL SERRATION	4.000 EA
HA6100	WHEEL FLANGE, CAST	4.000 EA
HW3020E04	1/8 X 3/8 A GROOVE PIN (DRIV-LOCK #118	2.000 EA
HA2050A01	G10-18SP 1-1/2 DIA C.R.STC1137(WELKER)	2.000 EA
XY8809A62SP	7/8-9 NUT L.H. HEX (NC)	1.000 EA
XY8809A12SP	7/8-9 NUT R.H. HEX (NC)	1.000 EA
RM1010A05	VNYL CAP 1.375-16 701-89 BLACK S/R Q=1	2.000 EA
WD4502A01	T&B 58361 1/2, HANDY BOX	1.000 EA

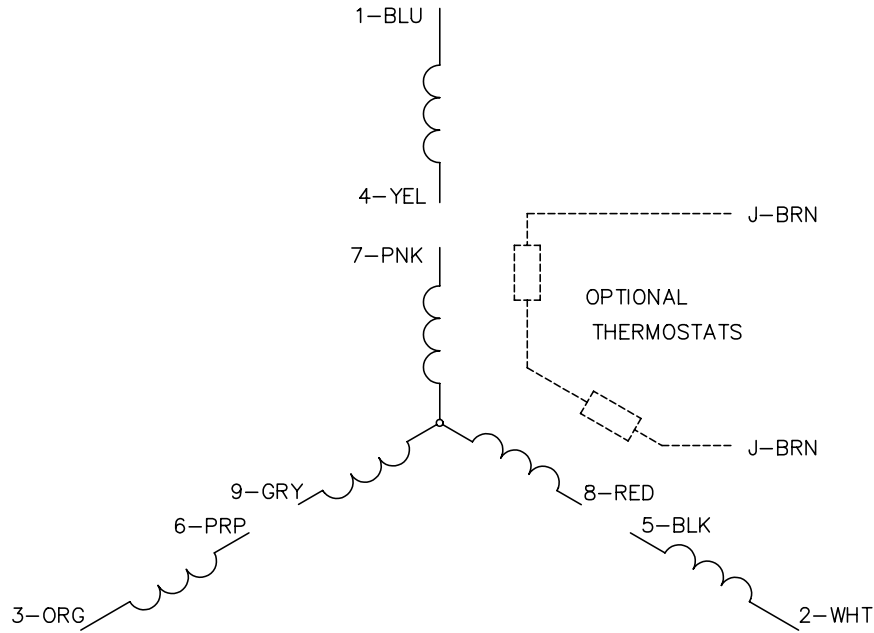
Parts List (continued)		
Part Number	Description	Quantity
51XB1016A06	10-16X3/8 HXWSSLD SERTYB	2.000 EA
11XW1032G06	10-32 X .38, TAPTITE II, HEX WSHR SLTD U	1.000 EA
WD4503A01	T&B 58 C 1, OUTLET BOX LID	1.000 EA
MG2000A02	RUST VETO-377-HF HOUGHTON	0.001 GA
85XU0407S04	4X1/4 U DRIVE PIN STAINLESS	2.000 EA
MN906	Baldor Buffer 6/13	1.000 EA
SP9004	SWITCH HKA270-73 CARLING	1.000 EA
MJ1000A02	GREASE, MOBIL POLYREX EM - 124047	0.050 LB
MG1000G01	MUNSELL 5.93PB 3.81/ 2.71	0.017 GA
LB1009N	LABEL,ROTATION DIRECTION (ON ROLLS)	1.000 EA
LB1092	LABEL, WARNING BUFFERS	1.000 EA
LB1119N	WARNING LABEL	1.000 EA
LC0005B01	CONN LABEL GRINDER/BUFFER X	1.000 EA
NP3411L	ALUM NAMEPLATE - BALDOR BUFFER CSA	1.000 EA
37PA1016	PKG GRP, PRINT PK1035A06	1.000 EA
LB1618	PROPOSITION 65 WARNING LABEL 1-1/2 X 1/2	1.000 EA

Accessories		
Part Number	Description	Multiplier
GA16	PEDESTAL INDUSTRIAL, CAST IRON 6" - 10"	A8
GA14	PEDESTAL FABRICATED STEEL W/SHELVES	A8
GA20	PEDESTAL INDUSTRIAL, CAST IRON 8"-14"	A8
GA20E	PEDESTAL LIGHT INDUSTRIAL,STEEL	A8
A103	10" COTTON BUFFING WHEEL (G0AP3004)	A8

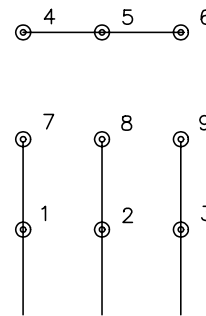
No performance data has been
assigned to this product.



CD0005

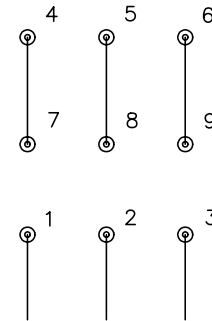


LOW VOLTAGE
(2Y)



LINE

HIGH VOLTAGE
(1Y)



LINE

NOTES:

1. INTERCHANGE ANY TWO LINE LEADS TO REVERSE ROTATION.
2. OPTIONAL THERMOSTATS ARE PROVIDED WHEN SPECIFIED.
3. ACTUAL NUMBER OF INTERNAL PARALLEL CIRCUITS MAY BE A MULTIPLE OF THOSE SHOWN ABOVE.
4. LEAD COLORS ARE OPTIONAL. LEADS MUST ALWAYS BE NUMBERED AS SHOWN.

REV. DESC: REVISE TO SHOW OPTIONAL COLORS			
REV. LTR: E	BY: JLP	REVISED: 01/19/99 10:15	TDR: 0171435
900000		FILE: AAA00005140	MDL: -
		MTL: -	

BALDOR ELECTRIC Co.

3PH, DV, 9 LEADS

CD0005