

BALDOR[®] • RELIANCE 

Product Information Packet

532

.5HP,3000/3600RPM,3PH,50/60HZ,3524M

Part Detail							
Revision:	AZ	Status:	PRD/A	Change #:		Proprietary:	No
Type:	AC	Elec. Spec:	G9WG0341	CD Diagram:	CD0294	Mfg Plant:	
Mech. Spec:	A-742	Layout:	ALY0742	Poles:	02	Created Date:	08-08-2007
Base:	RG	Eff. Date:	12-15-2021	Leads:	9#18 12" LG		Y

Specs			
Nameplate Output:	.5		
Product Style:	GRINDER		

Nameplate NP3118	
CAT.NO.	532
HP	.5
PHASE	3
HZ	50//60
SER.NO.	
SPEC.	A-742-341
	VOLTS 208-230/460
	AMPS 2/1
	RPM 3000//3600

Parts List		
Part Number	Description	Quantity
SA037570	SA A-742-341	1.000 EA
RA033595	RA A-742-341	1.000 EA
G8BA3000A04	BASE, MACH	1.000 EA
19XX2510A14	1/4-10 X 7/8 HEX HD PLASTITE SCREW	4.000 EA
HW1000A25	1/4 SAE FLAT WASHER (FS)	4.000 EA
G9EP1900A02	ENDPLATE, MACH	1.000 EA
SP9035SP	SWITCH HMA250-73(CARLING)	1.000 EA
HW1003A50	LOCKWASHER,1/2",EXT.TOOTHZINC PLATED	1.000 EA
WD1000A02	41202 AMP RECP.(11M/REEL)NON-CANCELABLE/	4.000 EA
G8CB4500A02	G8-272 BASE COVER,STPD X PLATED	1.000 EA
10XN2520A16	1/4-20 X 1 HEX HEAD CAP SCR, ZINC PLATED	4.000 EA
12XN1032A24	10-32 X 1 1/2 LG.HEX HEAD MACH. SLOTTED	4.000 EA
G9EP1900A10	R.H. ENDPLATE, MACH	1.000 EA
HA3100A45	THRUBOLT 10-32 X 8.875	4.000 EA
HW1001A10	WASHER, #10 SPLT LK, ZN X	4.000 EA
XY1032A02	10-32 HEX NUT DIRECTIONAL SERRATION	4.000 EA
G9FH1800A01	GRINDER GUARD, MACH	1.000 EA
HA3212A01	DR-1895D TABLE GUIDE PLMS(AUTO.MACH)	4.000 EA
10XN2520A14	1/4 20X7/8 HX HD CAP	4.000 EA
HW1001A25	LOCKWASHER 1/4, ZINC PLT .493 OD, .255 I	4.000 EA
G9FH1800A01	GRINDER GUARD, MACH	1.000 EA
HA3212A01	DR-1895D TABLE GUIDE PLMS(AUTO.MACH)	4.000 EA
10XN2520A14	1/4 20X7/8 HX HD CAP	4.000 EA
HW1001A25	LOCKWASHER 1/4, ZINC PLT .493 OD, .255 I	4.000 EA

Parts List (continued)		
Part Number	Description	Quantity
G9AP1006A01SP	GRINDER LIGHT VIMCO	1.000 EA
51XB1214A10	12-14 X 5/8HX WS SL SR TYBX	2.000 EA
HA1005A03SP	SLINGER, OD 1.750, ID .938, 205 BRG	2.000 EA
G9AP1003A01	TABLE CLAMP, MACH AMB	4.000 EA
HA5001A01	HA5001A01 TABLE CL.SCREW WELKER	4.000 EA
85XU1008A06	10-32X3/8 TY U DRIVE	2.000 EA
XY1032A01	10/32 SQUARE NUT	1.000 EA
HW1000A10	#10 FLAT WASHER (SAE)	1.000 EA
G9AP1005A02	DR799B LH ANGLE INDICATOR ZINC PLATED	2.000 EA
12XN1032A06	10-32 X 3/8 HEX SLT HD, ZN	4.000 EA
HW1001A10	WASHER, #10 SPLT LK, ZN X	4.000 EA
G9AP1005A01	DR799A RH ANGLE INDICATOR PLATED	2.000 EA
12XN1032A06	10-32 X 3/8 HEX SLT HD, ZN	4.000 EA
HW1001A10	WASHER, #10 SPLT LK, ZN X	4.000 EA
HW1000A38	WASHER, 3/8" FLAT, SAE Z/P	4.000 EA
HW1001A38	LOCKWASHER 3/8, ZINC PLT .688 OD, .382 I	4.000 EA
HA6104A01SP	WHEEL FLANGE, MACH	2.000 EA
HA3407A01	DR-780 TABLE STUD(AUTO)	4.000 EA
G9AP1000A01	TABLE, TOOL GR, MACH	2.000 EA
HA3007A01SP	DR8218 SCREW (WELKER) AISI-1018	8.000 EA
XY3118A12	5/16-18 HEX NUT DIRECTIONAL SERRATION	4.000 EA
HW1001A31	LOCKWASHER 5/16, ZINC PLT.591 OD, .319 I	4.000 EA
HA3203A12	3/4-16HEX JAM NUT(RH)MACH	2.000 EA
G9AP1008A01	HUB PROTECTOR FOR GRINDER 3.88"OD	2.000 EA

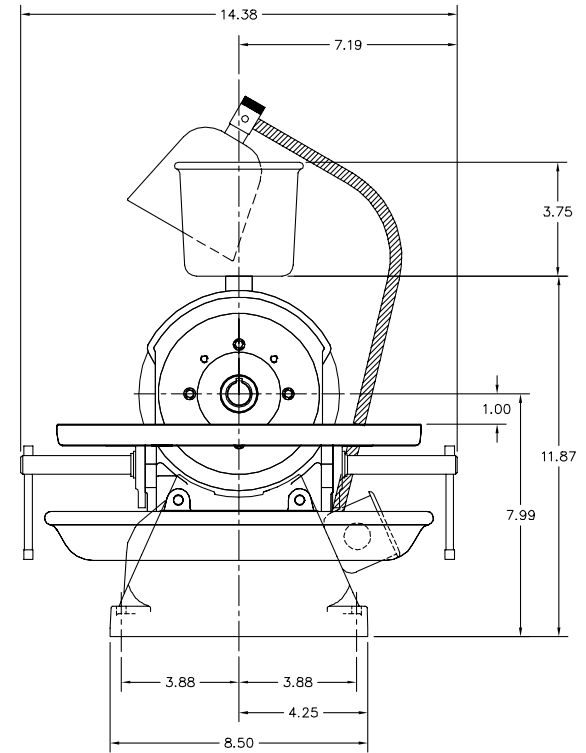
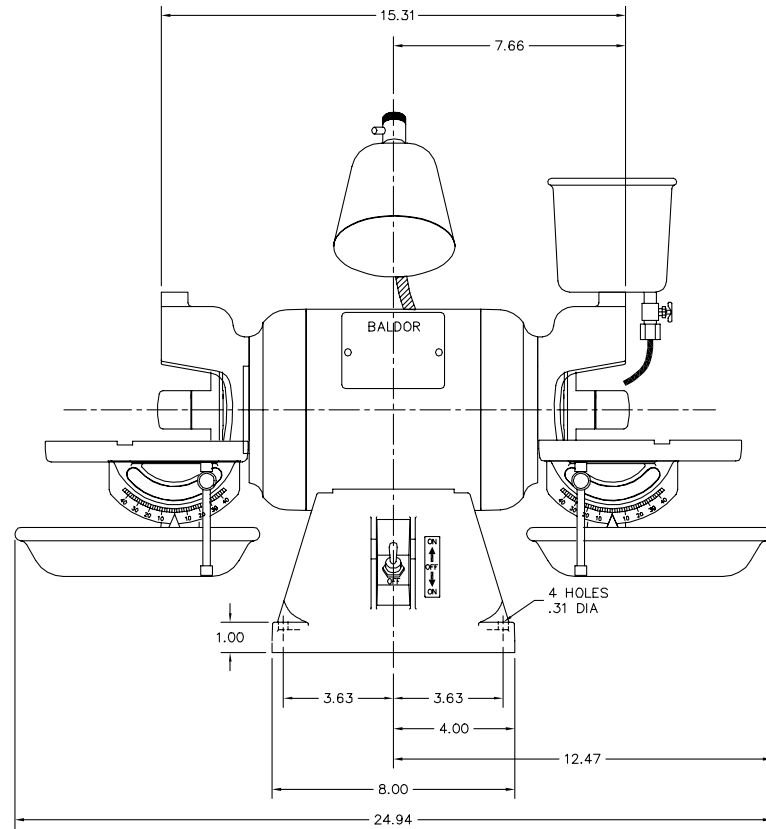
Product Information Packet: 532 - .5HP,3000/3600RPM,3PH,50/60HZ,3524M

G9AP1008A02	HUB PROTECTOR FOR GRINDER 4.425"OD	2.000 EA
91XN2520J12	1/4-20X3/4 FT CTRSK HDCAP	8.000 EA
RM1010A06	VNYL CAP 1.125-14 701-89 BLACK S/R Q=	2.000 EA
G9AP1001A01	WATER TRAY, 153 CARBIDE TOOL GRINDER	2.000 EA
HA3405A01	DR-798A STUD(AUTO.MACH)	4.000 EA
HA3406A01	DR-798B STUD (AUTO)	2.000 EA
G9AP5001A01	WATER POT ASSEMBLY	1.000 EA
G9AP5000A01SP	TOOL REST ASSEMBLY	1.000 EA
WD4502A01A02	CONDUIT BOX W/KNOCKOUTS, FOR 7,8 & 10 GR	1.000 EA
30GS1000	GASKET, CONDUIT BOX	1.000 EA
12XF1032A06	10-32X3/8 TY F HEX HD SLT	2.000 EA
WD4503A01	T&B 58 C 1, OUTLET BOX LID	1.000 EA
LB1015	LABEL, UL APP CARBIDE GDR	1.000 EA
LB1034	LABEL, "ON" AND "OFF" X	1.000 EA
85XU0407S04	4X1/4 U DRIVE PIN STAINLESS	2.000 EA
HW5100A04	WAVY WASHER, 204 BRG	2.000 EA
HW1001A10	WASHER, #10 SPLT LK, ZN X	4.000 EA
MG1000G01	MUNSELL 5.93PB 3.81/ 2.71	0.017 GA
NP3118	ALUM GRINDERS-BUFFERS NO LOGO'S	1.000 EA
LB1119N	WARNING LABEL	1.000 EA
LC0005B01	CONN LABEL GRINDER/BUFFER X	1.000 EA
07PA1007	PKG GRP, PRINT PK1156A06	1.000 EA
MN905	Inst. Manual for Tool Grinders 9/03	1.000 EA
LB1618	PROPOSITION 65 WARNING LABEL 1-1/2 X 1/2	1.000 EA

Accessories		
Part Number	Description	Multiplier
GA16	PEDESTAL INDUSTRIAL, CAST IRON 6" - 10"	A8
GA14	PEDESTAL FABRICATED STEEL W/SHELVES	A8
GA20	PEDESTAL INDUSTRIAL, CAST IRON 8"-14"	A8
GA20E	PEDESTAL LIGHT INDUSTRIAL,STEEL	A8
D501	GENERAL PURPOSE DIAMOND WHEEL	A8
D502	FINE FINISH DIAMOND WHEEL	A8

No performance data has been
assigned to this product.

ALY0742



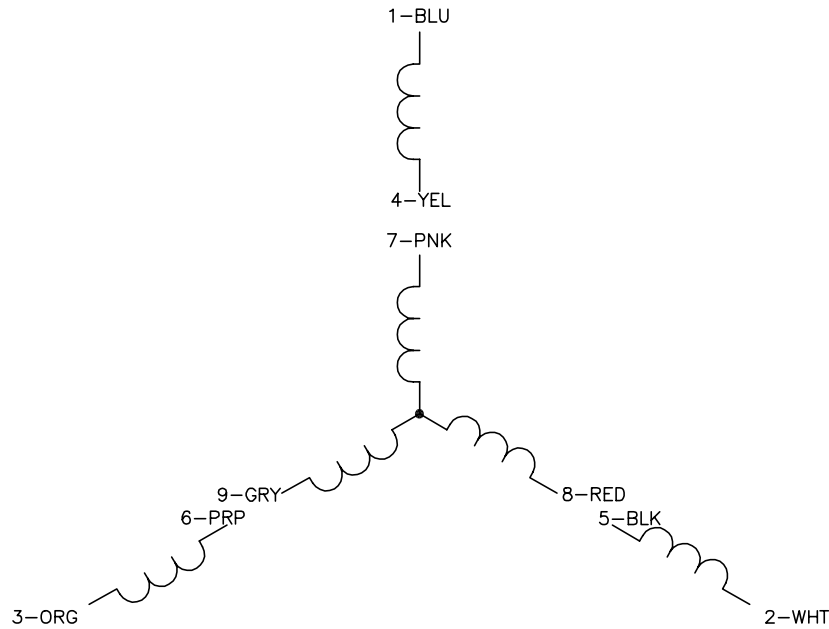
ALY0742

CUSTOMER IS RESPONSIBLE FOR DETERMINING THAT THE PRODUCT WILL PERFORM SUITABLY IN THE INTENDED APPLICATION.

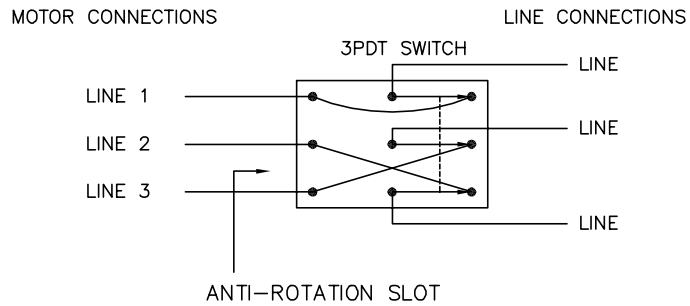
REV. DESC: REMOVE RUBBER FEET	VERSION: 01	TDR: 000001183183
REV. LTR: E	REVISED: 01:17:54 12/17/2021	BY: USANEAT
FILE: \AAA\00077\148		
MTL: -		

BALDOR - RELIANCE[®]
 STD 6" DIAMOND WHEEL TOOL GRINDER 524C FRAME 35
 SH 1 of 1

CD0294



	LINE 1	LINE 2	LINE 3	JOIN 1	JOIN 2	JOIN 3
HIGH	1	2	3	4,7	5,8	6,9
LOW	1,7	2,8	3,9	4,5,6	-	-



NOTES:

1. INTERCHANGE ANY TWO LINE LEADS TO REVERSE ROTATION.
2. ACTUAL NUMBER OF INTERNAL PARALLEL CIRCUITS MAY VARY.
3. LEAD COLORS ARE OPTIONAL. LEADS MUST ALWAYS BE NUMBERED AS SHOWN.

REV. DESC: ADDED THE LCOATION OF ANTI-ROTATION SLOT			
REV. LTR: C	VERSION: 01	TDR: 000000406180	
CD0294	FILE: \AAA\00051\250	REVISED: 14:15:46 09/27/2006	
	MTL: -	BY: ENALEMO	

BALDOR ELECTRIC Co.

3PH, DV, 9 LEADS, 2PDT REVERSING SWITCH

CD0294