

Product Information Packet

February 5, 2024

Data shown is for the current revision model #. Ensure your nameplate model # matches.

Model Number:	WPN-DA184TSL-2C
Catalog Number:	BA2N005V4C
Connection Diagram:	See Page 4
Outline Drawing:	See Page 3

Table of Contents

Specification	01
Performance Characteristics	02
Outline Drawing	03
Connection Drawing(s)	04

Marks:

MODEL NUMBER:	BA2N005V4C	Estimated Weight:	112 Lbs
Outline Drawing:	See Page 3	Time Rating:	S1
Connection Diagram:	See Page 4	Enclosure:	TEFC
Design Code:	B	Encl Construction:	GP
Type:	KS	Ambient Max(°C):	40
Frame:	184TC	Alt Ambient Max(°C):	40
Phases:	3	Insulation Class:	F
Poles:	2	NEMA Design:	B
Output Power:	5HP	Nominal Efficiency:	88.5 %
RPM:	3505	Guaranteed Efficiency:	86.5 %
Voltage:	208-230/460	3/4 Load Efficiency:	89.6 %
Hertz:	60	KVA Code:	H
Amps - FL:	11.5/5.77	Max KVAR:	7.1
Service Factor:	1.25@60Hz	Power Factor:	91%
Alt Service Factor:	1.15	Bearing - DE:	6206-ZZC3
		Bearing - ODE:	6205-ZZC3

Enclosure is Totally Enclosed Fan-Cooled

Stamped Nameplate Notes:

12-60HZ CONSTANT TORQUE, 6-60Hz VARIABLE TORQUE

50HZ DATA:
190-200/400V
13.5/6.74AMPS
RPM 2920
SF 1.0

CSA APPROVED FOR CLASS I;DIVISION 2; GROUPS A, B, C & D,ZONE 2; GROUPS IIA & IIB T3 WITH VFD

Additional Information:

F1/F2/F3/ROUND BODY MOUNTING USING REMOVABLE/REPOSITIONABLE FEET
INVERTER DUTY: CT5:1(12Hz~60Hz)@100%TN, CT15:1(4Hz~60Hz)@66.7%TN, VT20:1

Performance Characteristics

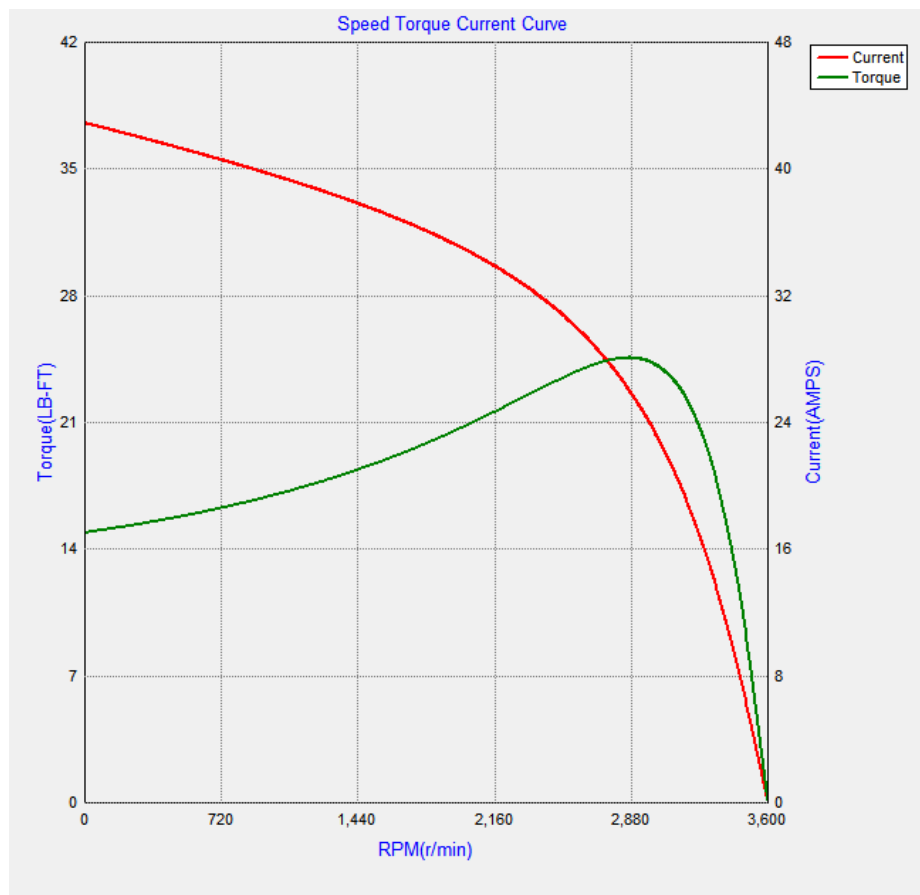
Marks:

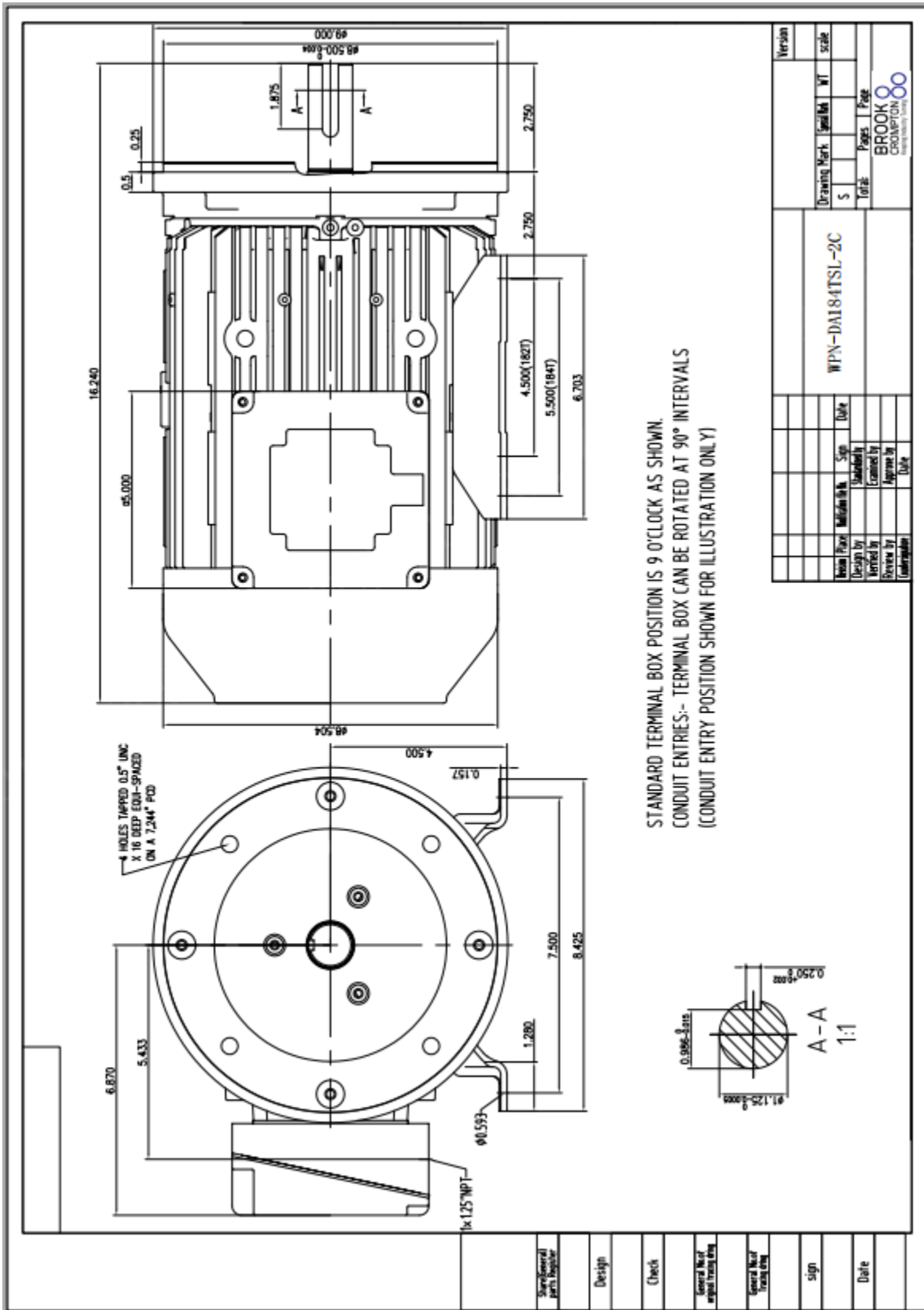
LOAD %	150.0	125.0	100.0	75.0	50.0	25.0
% EFF	85.32	87.07	88.53	89.66	90.14	88.51
% PF	91.52	91.33	91.03	89.37	83.60	67.27
AMPS(460V)	8.93	7.30	5.76	4.35	3.08	1.95

TORQUE(FL) LB-FT 10.08 TORQUE(LR)%FL 200 TORQUE(BD)%FL 320
 AMPS(LR 460V) 44.4 PF AT START 37

Other Useful Information for Application:

Rotor Inertia: Lb-Ft ² (Kg-m ²):	0.177(0.007)
Max load inertia: Lb-Ft ² (Kg-m ²):	
Load Type:	Square Torque/Speed Characteristic
Voltage:	100%
Number of starts per hour:	2 Cold or 1 Hot
Acceleration Time with maximum inertia (sec):	7.8
Safe stall time (sec): Cold/Hot	18/7





Marks:

Connection Diagram

