



Product Information Packet

February 5, 2024

Data shown is for the current revision model #. Ensure your nameplate model # matches.

Model Number:	WPN-DA254TSD-2C
Catalog Number:	BA2N015V5C
Connection Diagram:	See Page 4
Outline Drawing:	See Page 3

Table of Contents

Specification	01
Performance Characteristics	02
Outline Drawing	03
Connection Drawing(s)	04

Marks:

MODEL NUMBER:	BA2N015V5C	Estimated Weight:	264 Lbs
Outline Drawing:	See Page 3	Time Rating:	S1
Connection Diagram:	See Page 4	Enclosure:	TEFC
Design Code:	B	Encl Construction:	GP
Type:	KS	Ambient Max(°C):	40
Frame:	254TC	Alt Ambient Max(°C):	40
Phases:	3	Insulation Class:	F
Poles:	2	NEMA Design:	B
Output Power:	15HP	Nominal Efficiency:	91.0 %
RPM:	3525	Guaranteed Efficiency:	89.5 %
Voltage:	575	3/4 Load Efficiency:	92.64%
Hertz:	60	KVA Code:	G
Amps - FL:	13.36	Max KVAR:	6.3
Service Factor:	1.25@60Hz	Power Factor:	91%
Alt Service Factor:	1.15	Bearing - DE:	6309-ZZC3
		Bearing - ODE:	6307-ZZC3

Enclosure is Totally Enclosed Fan-Cooled

Stamped Nameplate Notes:

12-60HZ CONSTANT TORQUE, 6-60Hz VARIABLE TORQUE

50HZ DATA:
RPM 2935
SF 1.0

CSA APPROVED FOR CLASS I;DIVISION 2; GROUPS A, B, C & D,ZONE 2; GROUPS IIA & IIB T3 WITH VFD

Additional Information:

F1/F2/F3/ROUND BODY MOUNTING USING REMOVABLE/REPOSITIONABLE FEET
INVERTER DUTY: CT5:1(12Hz~60Hz)@100%TN, CT15:1(4Hz~60Hz)@66.7%TN, VT20:1

Performance Characteristics

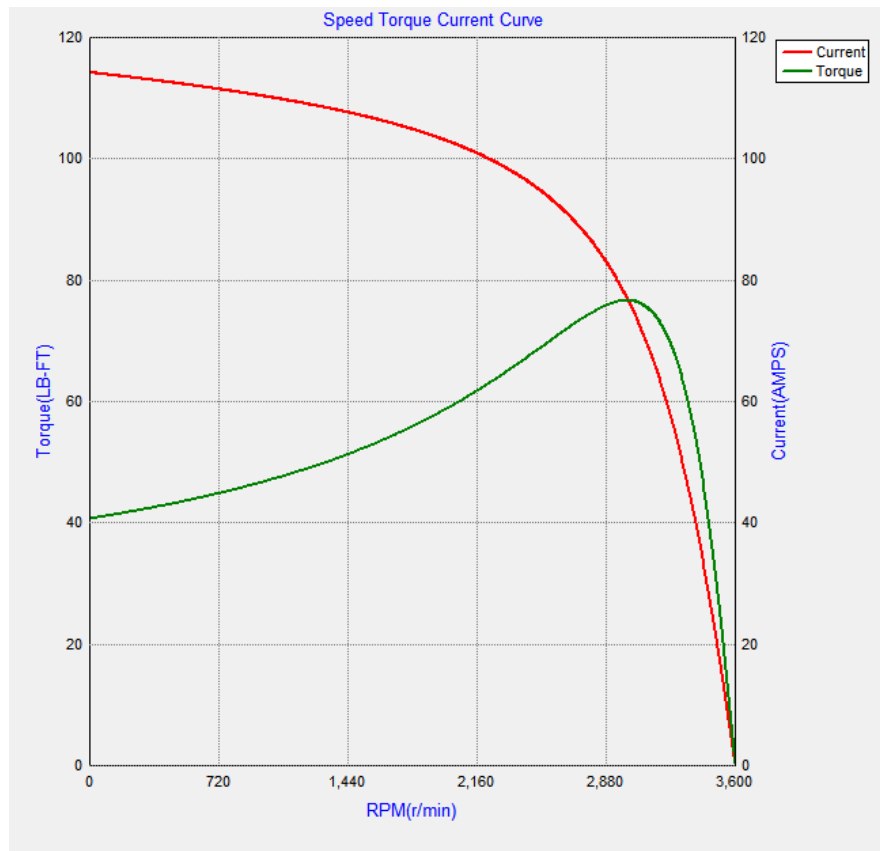
Marks:

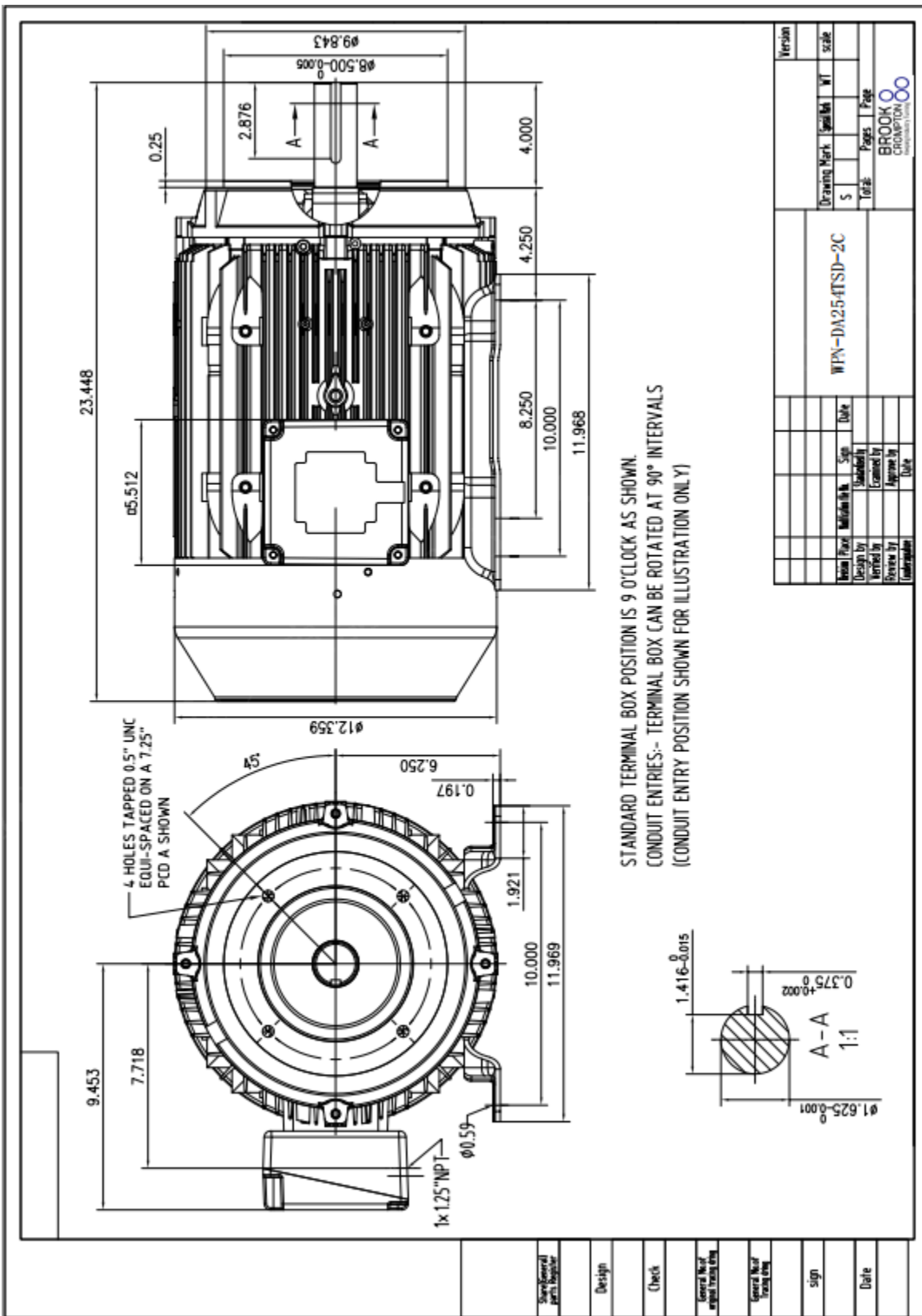
LOAD %	150.0	125.0	100.0	75.0	50.0	25.0
% EFF	90.01	91.19	92.12	92.64	92.30	88.97
% PF	92.94	93.05	92.35	89.94	83.73	67.53
AMPS(460V)	24.76	20.34	16.23	12.43	8.94	5.75

TORQUE(FL) LB-FT 29.67 TORQUE(LR)%FL 200 TORQUE(BD)%FL 350
 AMPS(LR 460V) 267 PF AT START 36

Other Useful Information for Application:

Rotor Inertia: Lb-Ft ² (Kg-m ²):	1.110(0.047)
Max load inertia: Lb-Ft ² (Kg-m ²):	
Load Type:	Square Torque/Speed Characteristic
Voltage:	100%
Number of starts per hour:	2 Cold or 1 Hot
Acceleration Time with maximum inertia (sec):	10.6
Safe stall time (sec): Cold/Hot	34/14





Version	Scale	WT	Scale
1	1:1		
Drawing Mark: WPN-DA2.5-ETSD-2C			
Design by: _____ Date: _____ Checked by: _____ Date: _____ Drawn by: _____ Date: _____ Reviewed by: _____ Date: _____ Approved by: _____ Date: _____			
Total Pages: 1 Page Total: 1 Page			
BROOK CROMPTON CORPORATION <small>Manufacturing Division</small>			

Marks:

Connection Diagram

Thermistor Connection 235A3027VD

