



Product Information Packet

February 5, 2024

Data shown is for the current revision model #. Ensure your nameplate model # matches.

| | |
|----------------------------|------------------------|
| Model Number: | WPN-DA284TSC-2C |
| Catalog Number: | BA2N025V5C |
| Connection Diagram: | See Page 4 |
| Outline Drawing: | See Page 3 |

Table of Contents

| | |
|-----------------------------|----|
| Specification | 01 |
| Performance Characteristics | 02 |
| Outline Drawing | 03 |
| Connection Drawing(s) | 04 |

Marks:

| | | | |
|----------------------------|------------|-------------------------------|-----------|
| MODEL NUMBER: | BA2N025V5C | Estimated Weight: | 329 Lbs |
| Outline Drawing: | See Page 3 | Time Rating: | S1 |
| Connection Diagram: | See Page 4 | Enclosure: | TEFC |
| Design Code: | B | Encl Construction: | GP |
| Type: | KS | Ambient Max(°C): | 40 |
| Frame: | 284TSC | Alt Ambient Max(°C): | 40 |
| Phases: | 3 | Insulation Class: | F |
| Poles: | 2 | NEMA Design: | B |
| Output Power: | 25HP | Nominal Efficiency: | 91.7 % |
| RPM: | 3560 | Guaranteed Efficiency: | 90.2 % |
| Voltage: | 575 | 3/4 Load Efficiency: | 90.8 % |
| Hertz: | 60 | KVA Code: | F |
| Amps - FL: | 22.8 | Max KVAR: | 5.6 |
| Service Factor: | 1.25@60Hz | Power Factor: | 89% |
| Alt Service Factor: | 1.15 | Bearing - DE: | 6310-ZZC3 |
| | | Bearing - ODE: | 6308-ZZC3 |

Enclosure is Totally Enclosed Fan-Cooled

Stamped Nameplate Notes:

12-60HZ CONSTANT TORQUE, 6-60Hz VARIABLE TORQUE

50HZ DATA:
RPM 2965
SF 1.0

CSA APPROVED FOR CLASS I;DIVISION 2; GROUPS A, B, C & D,ZONE 2; GROUPS IIA & IIB T3 WITH VFD

Additional Information:

F1/F2/F3/ROUND BODY MOUNTING USING REMOVABLE/REPOSITIONABLE FEET
INVERTER DUTY: CT5:1(12Hz~60Hz)@100%TN, CT15:1(4Hz~60Hz)@66.7%TN, VT20:1

Performance Characteristics

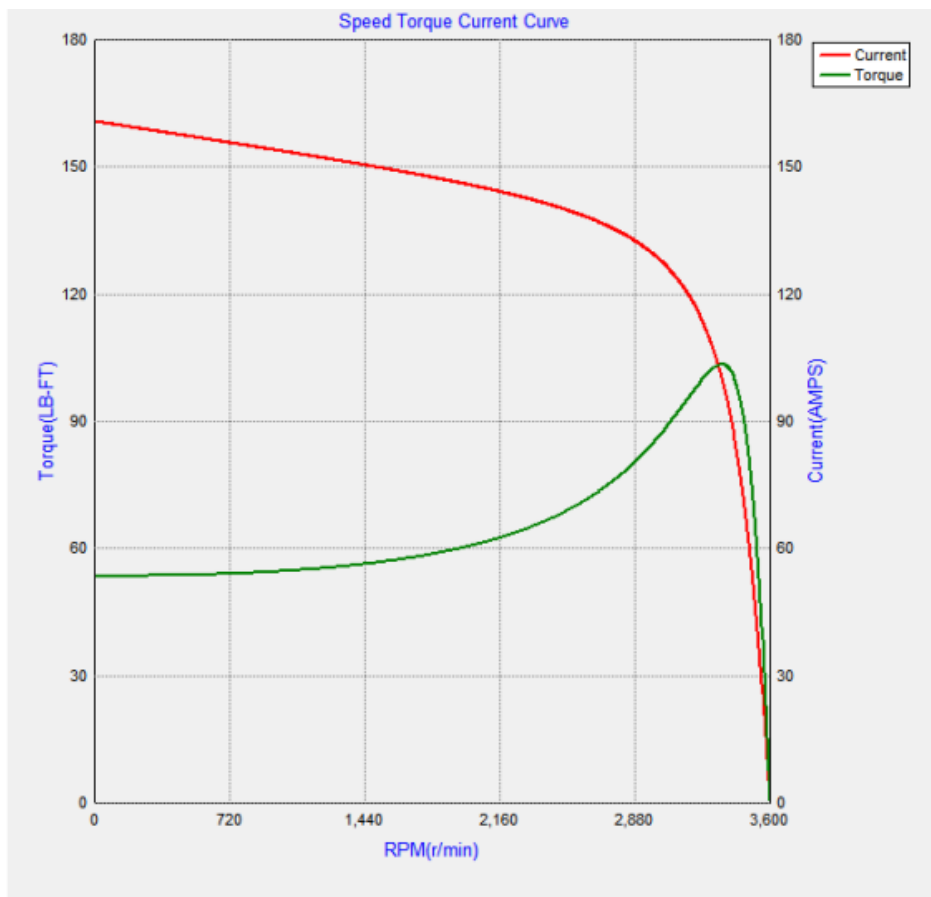
Marks:

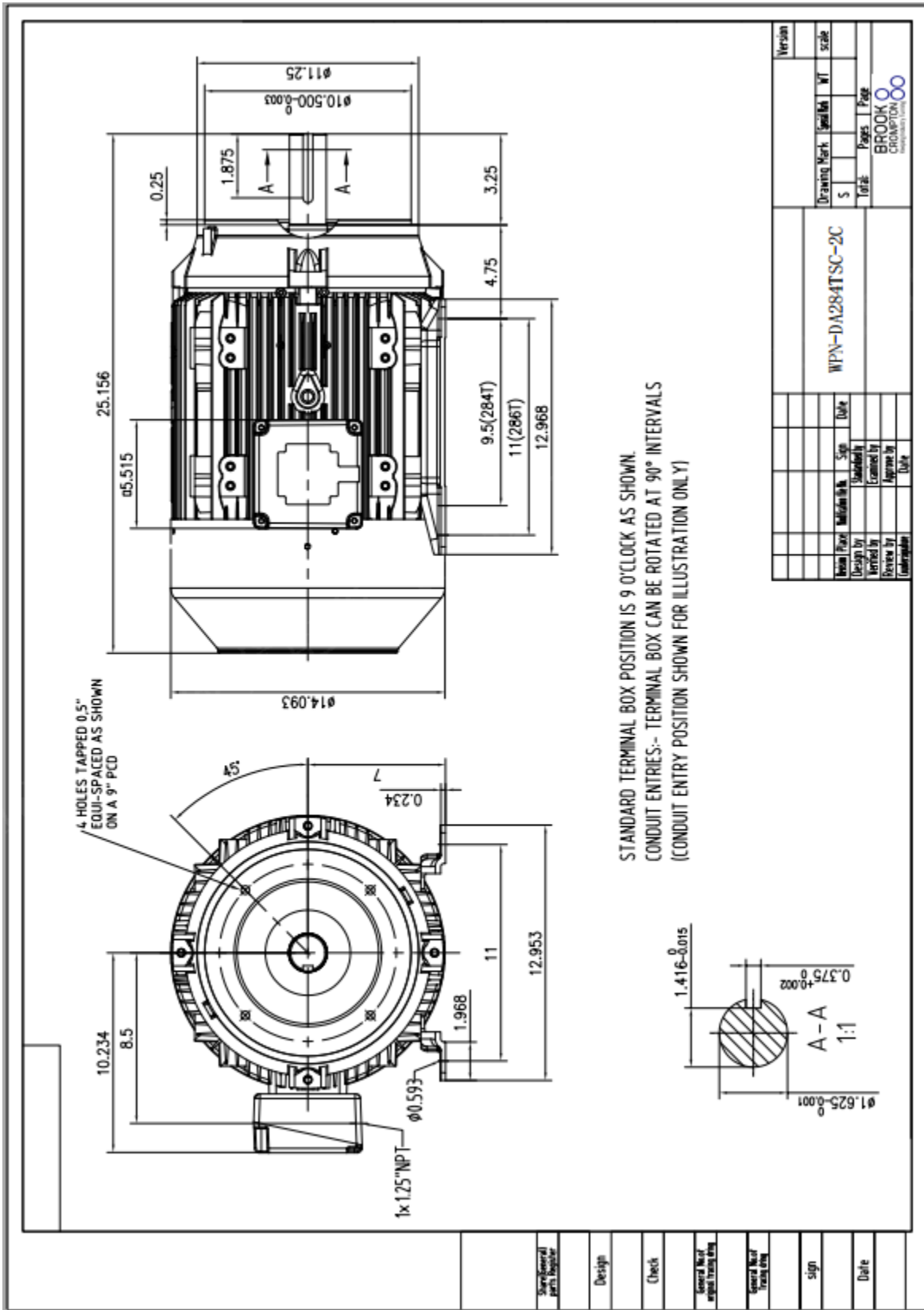
| LOAD % | 150.0 | 125.0 | 100.0 | 75.0 | 50.0 | 25.0 |
|------------|-------|-------|-------|-------|-------|-------|
| % EFF | 89.09 | 90.15 | 91.70 | 90.88 | 89.62 | 84.00 |
| % PF | 86.98 | 87.83 | 88.95 | 85.95 | 79.89 | 63.54 |
| AMPS(460V) | 44.95 | 36.66 | 28.4 | 22.30 | 16.22 | 10.88 |

TORQUE(FL) LB-FT 49.63 TORQUE(LR)%FL 150 TORQUE(BD)%FL 284
 AMPS(LR 460V) 175 PF AT START 33

Other Useful Information for Application:

| | |
|--|------------------------------------|
| Rotor Inertia: Lb-Ft ² (Kg-m ²): | 2.010(0.085) |
| Max load inertia: Lb-Ft ² (Kg-m ²): | |
| Load Type: | Square Torque/Speed Characteristic |
| Voltage: | 100% |
| Number of starts per hour: | 2 Cold or 1 Hot |
| Acceleration Time with maximum inertia (sec): | 12.6 |
| Safe stall time (sec): Cold/Hot | 56/23 |





Marks:

Connection Diagram

Thermistor Connection 235A3027VD

