

Product Information Packet

February 5, 2024

Data shown is for the current revision model #. Ensure your nameplate model # matches.

Model Number:	WPN-DA286TSG-2C
Catalog Number:	BA2N030V3C
Connection Diagram:	See Page 4
Outline Drawing:	See Page 3

Table of Contents

Specification	01
Performance Characteristics	02
Outline Drawing	03
Connection Drawing(s)	04

Marks:

MODEL NUMBER:	BA2N030V3C	Estimated Weight:	380 Lbs
Outline Drawing:	See Page 3	Time Rating:	S1
Connection Diagram:	See Page 4	Enclosure:	TEFC
Design Code:	B	Encl Construction:	GP
Type:	KS	Ambient Max(°C):	40
Frame:	286TSC	Alt Ambient Max(°C):	40
Phases:	3	Insulation Class:	F
Poles:	2	NEMA Design:	B
Output Power:	30HP	Nominal Efficiency:	91.7 %
RPM:	3560	Guaranteed Efficiency:	90.2 %
Voltage:	208/416	3/4 Load Efficiency:	91.2 %
Hertz:	60	KVA Code:	F
Amps - FL:	73.98/37.04	Max KVAR:	5.6
Service Factor:	1.25@60Hz	Power Factor:	90%
Alt Service Factor:	1.15	Bearing - DE:	6310-ZZC3
		Bearing - ODE:	6308-ZZC3

Enclosure is Totally Enclosed Fan-Cooled

Stamped Nameplate Notes:

12-60HZ CONSTANT TORQUE, 6-60Hz VARIABLE TORQUE

50HZ DATA:
RPM 2925
SF 1.0

CSA APPROVED FOR CLASS I;DIVISION 2; GROUPS A, B, C & D,ZONE 2; GROUPS IIA & IIB T3 WITH VFD

Additional Information:

F1/F2/F3/ROUND BODY MOUNTING USING REMOVABLE/REPOSITIONABLE FEET
INVERTER DUTY: CT5:1(12Hz~60Hz)@100%TN, CT15:1(4Hz~60Hz)@66.7%TN, VT20:1

Performance Characteristics

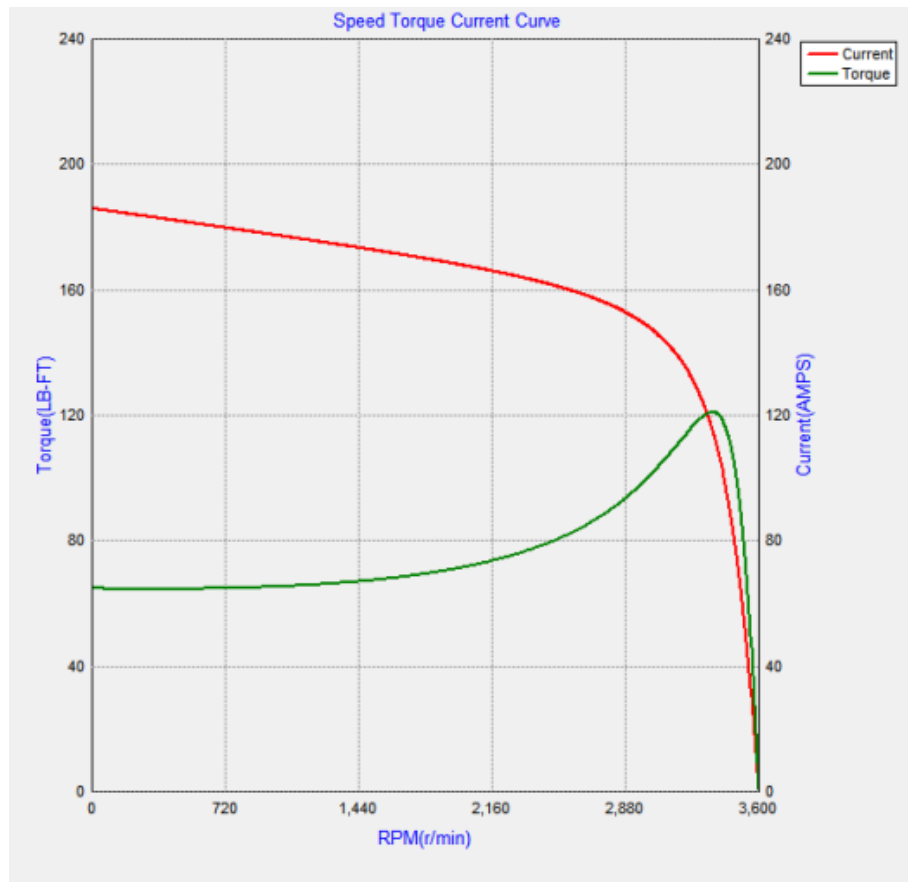
Marks:

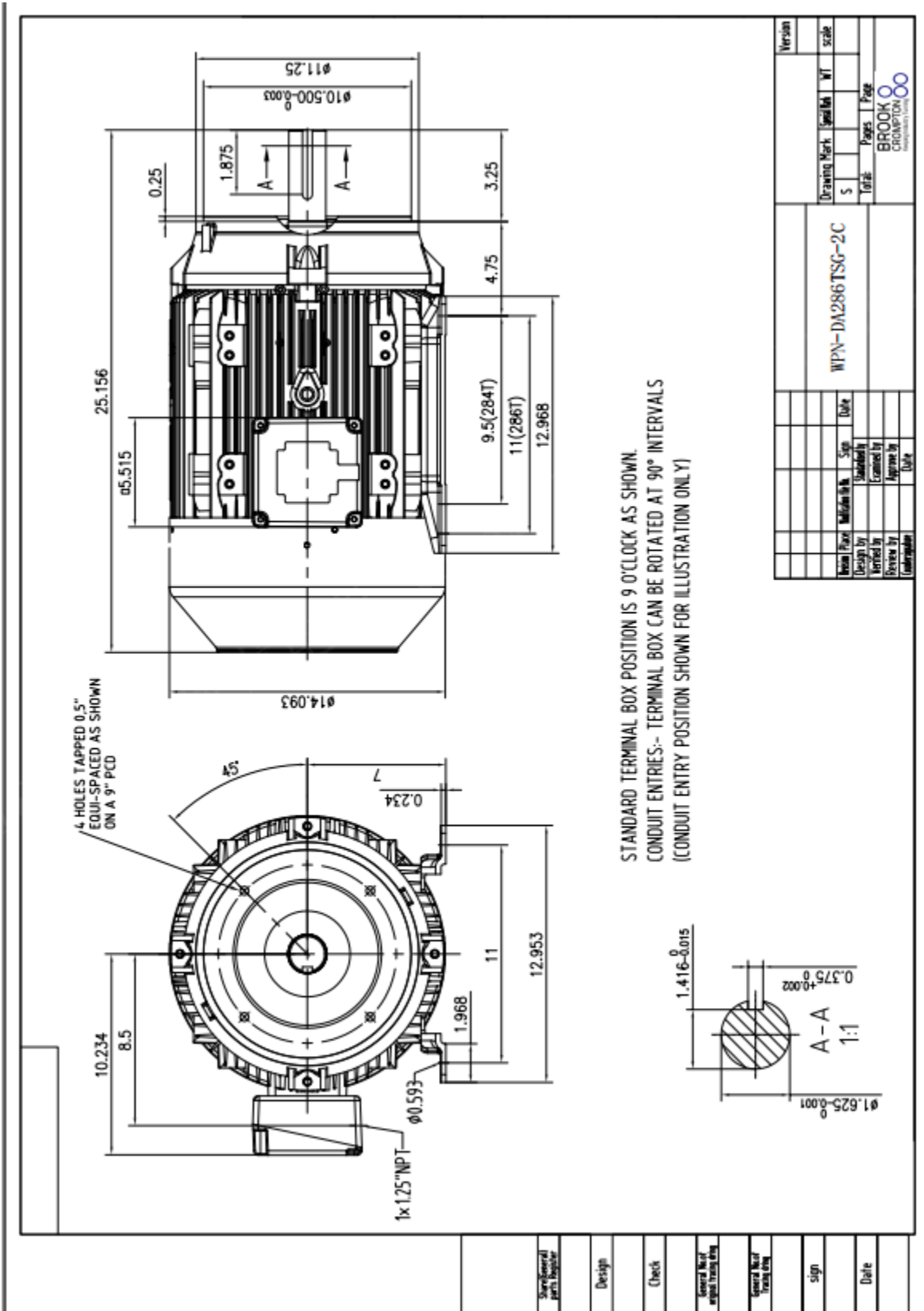
LOAD %	150.0	125.0	100.0	75.0	50.0	25.0
% EFF	88.61	89.92	91.71	91.25	90.45	85.73
% PF	87.84	88.71	88.89	87.42	82.09	66.61
AMPS(460V)	53.21	43.27	33.85	25.96	18.59	12.09

TORQUE(FL) LB-FT 59.02 TORQUE(LR)%FL 150 TORQUE(BD)%FL 276
 AMPS(LR 460V) 211 PF AT START 38

Other Useful Information for Application:

Rotor Inertia: Lb-Ft ² (Kg-m ²):	2.320(0.098)
Max load inertia: Lb-Ft ² (Kg-m ²):	
Load Type:	Square Torque/Speed Characteristic
Voltage:	100%
Number of starts per hour:	2 Cold or 1 Hot
Acceleration Time with maximum inertia (sec):	13.4
Safe stall time (sec): Cold/Hot	55/22





Marks:

Connection Diagram

Thermistor Connection 235A3027VD

