

Product Information Packet

February 5, 2024

Data shown is for the current revision model #. Ensure your nameplate model # matches.

| | |
|----------------------------|-----------------------|
| Model Number: | WPN-DA213TSC-2 |
| Catalog Number: | BA2N7.5V3 |
| Connection Diagram: | See Page 4 |
| Outline Drawing: | See Page 3 |

Table of Contents

| | |
|-----------------------------|----|
| Specification | 01 |
| Performance Characteristics | 02 |
| Outline Drawing | 03 |
| Connection Drawing(s) | 04 |

Marks:

| | | | |
|----------------------------|------------|-------------------------------|-----------|
| MODEL NUMBER: | BA2N7.5V3 | Estimated Weight: | 130 Lbs |
| Outline Drawing: | See Page 3 | Time Rating: | S1 |
| Connection Diagram: | See Page 4 | Enclosure: | TEFC |
| Design Code: | B | Encl Construction: | GP |
| Type: | KS | Ambient Max(°C): | 40 |
| Frame: | 213T | Alt Ambient Max(°C): | 40 |
| Phases: | 3 | Insulation Class: | F |
| Poles: | 2 | NEMA Design: | B |
| Output Power: | 7.5HP | Nominal Efficiency: | 89.5 % |
| RPM: | 3515 | Guaranteed Efficiency: | 87.5 % |
| Voltage: | 208/416 | 3/4 Load Efficiency: | 89.5 % |
| Hertz: | 60 | KVA Code: | G |
| Amps - FL: | 18.91/9.48 | Max KVAR: | 6.3 |
| Service Factor: | 1.25@60Hz | Power Factor: | 90% |
| Alt Service Factor: | 1.15 | Bearing - DE: | 6208-ZZC3 |
| | | Bearing - ODE: | 6208-ZZC3 |

Enclosure is Totally Enclosed Fan-Cooled

Stamped Nameplate Notes:

12-60HZ CONSTANT TORQUE, 6-60Hz VARIABLE TORQUE

50HZ DATA:
RPM 2925
SF 1.0

CSA APPROVED FOR CLASS I;DIVISION 2; GROUPS A, B, C & D,ZONE 2; GROUPS IIA & IIB T3 WITH VFD

Additional Information:

F1/F2/F3/ROUND BODY MOUNTING USING REMOVABLE/REPOSITIONABLE FEET
INVERTER DUTY: CT5:1(12Hz~60Hz)@100%TN, CT15:1(4Hz~60Hz)@66.7%TN, VT20:1

Performance Characteristics

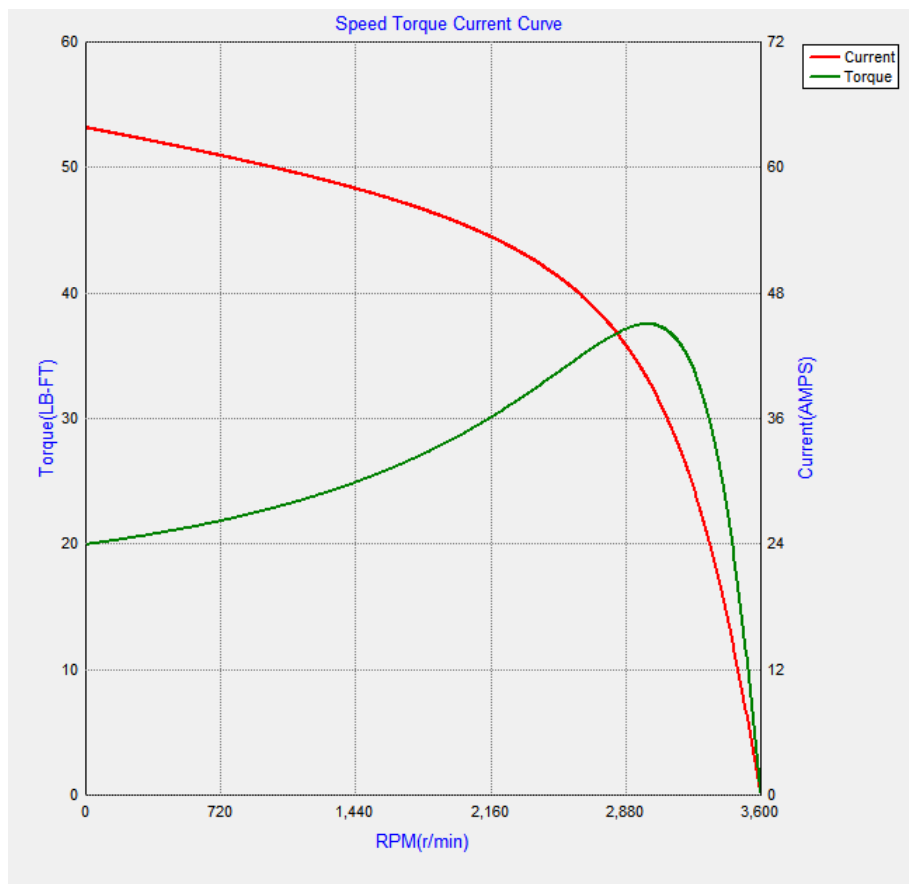
Marks:

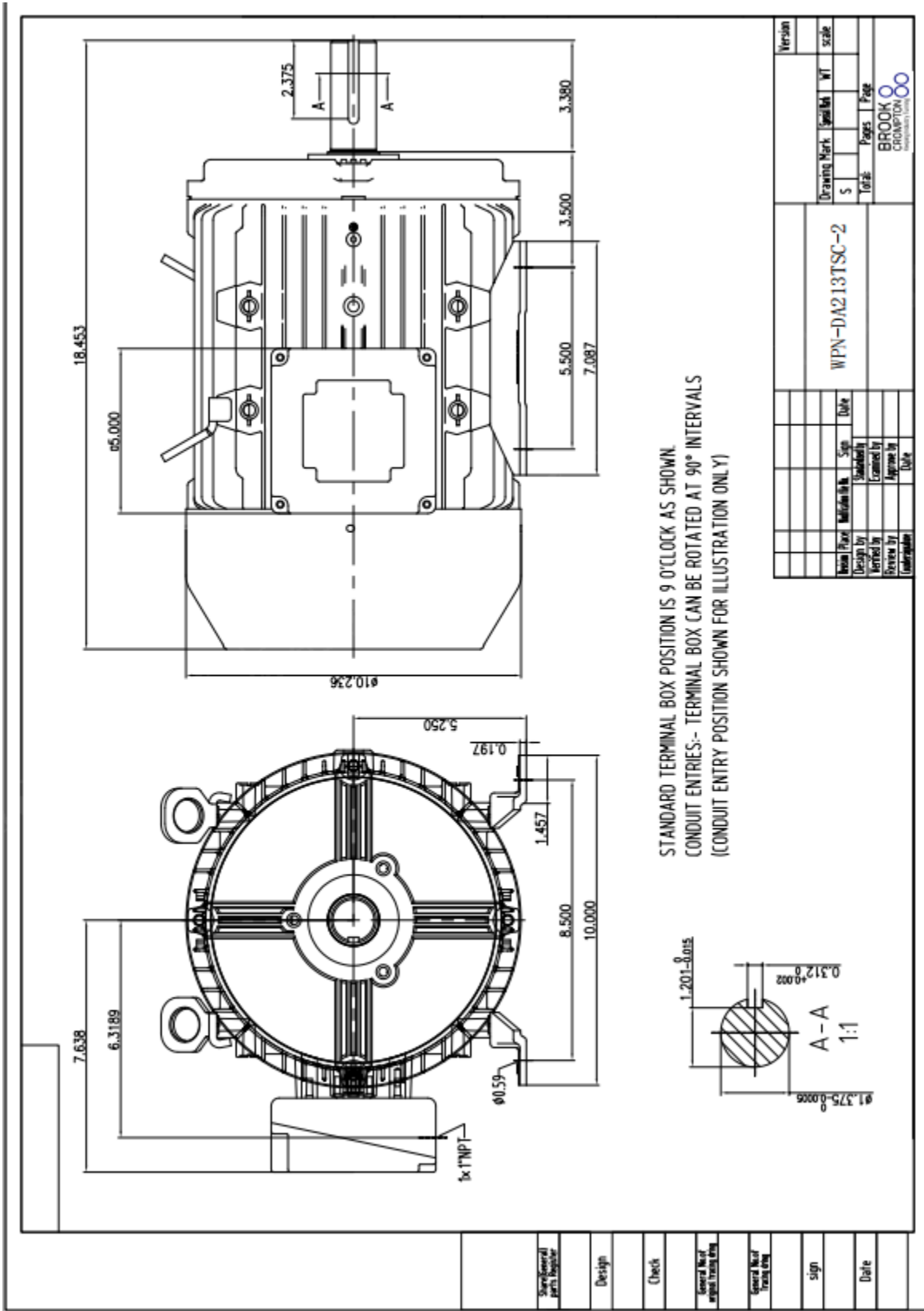
| LOAD % | 150.0 | 125.0 | 100.0 | 75.0 | 50.0 | 25.0 |
|------------|-------|-------|-------|-------|-------|-------|
| % EFF | 87.86 | 88.81 | 89.53 | 89.86 | 89.41 | 86.15 |
| % PF | 90.71 | 90.69 | 90.05 | 87.92 | 82.49 | 64.72 |
| AMPS(460V) | 12.99 | 10.71 | 8.56 | 6.55 | 4.68 | 3.10 |

TORQUE(FL) LB-FT 14.94 TORQUE(LR)%FL 200 TORQUE(BD)%FL 350
 AMPS(LR 460V) 67.1 PF AT START 36

Other Useful Information for Application:

| | |
|--|------------------------------------|
| Rotor Inertia: Lb-Ft ² (Kg-m ²): | 0.344(0.014) |
| Max load inertia: Lb-Ft ² (Kg-m ²): | |
| Load Type: | Square Torque/Speed Characteristic |
| Voltage: | 100% |
| Number of starts per hour: | 2 Cold or 1 Hot |
| Acceleration Time with maximum inertia (sec): | 8.7 |
| Safe stall time (sec): Cold/Hot | 33/13 |





Marks:

Connection Diagram

