

Product Information Packet

February 5, 2024

Data shown is for the current revision model #. Ensure your nameplate model # matches.

Model Number:	WPN-DA184TSW-4C
Catalog Number:	BA4N005V4C
Connection Diagram:	See Page 4
Outline Drawing:	See Page 3

Table of Contents

Specification	01
Performance Characteristics	02
Outline Drawing	03
Connection Drawing(s)	04

Marks:

MODEL NUMBER:	BA4N005V4C	Estimated Weight:	112 Lbs
Outline Drawing:	See Page 3	Time Rating:	S1
Connection Diagram:	See Page 4	Enclosure:	TEFC
Design Code:	B	Encl Construction:	GP
Type:	KS	Ambient Max(°C):	40
Frame:	184TC	Alt Ambient Max(°C):	40
Phases:	3	Insulation Class:	F
Poles:	4	NEMA Design:	B
Output Power:	5HP	Nominal Efficiency:	89.5 %
RPM:	1755	Guaranteed Efficiency:	87.5 %
Voltage:	208-230/460	3/4 Load Efficiency:	90.6 %
Hertz:	60	KVA Code:	K
Amps - FL:	14.0/7.00	Max KVAR:	9
Service Factor:	1.25@60Hz	Power Factor:	74%
Alt Service Factor:	1.15	Bearing - DE:	6206-ZZC3
		Bearing - ODE:	6205-ZZC3

Enclosure is Totally Enclosed Fan-Cooled

Stamped Nameplate Notes:

12-60HZ CONSTANT TORQUE, 6-60Hz VARIABLE TORQUE

50HZ DATA:
 190-200/400V
 14.9/7.43AMPS
 RPM 1460
 SF 1.0

CSA APPROVED FOR CLASS I;DIVISION 2; GROUPS A, B, C & D,ZONE 2; GROUPS IIA & IIB T3 WITH VFD

Additional Information:

F1/F2/F3/ROUND BODY MOUNTING USING REMOVABLE/REPOSITIONABLE FEET
 INVERTER DUTY: CT5:1(12Hz~60Hz)@100%TN, CT15:1(4Hz~60Hz)@66.7%TN, VT20:1

Performance Characteristics

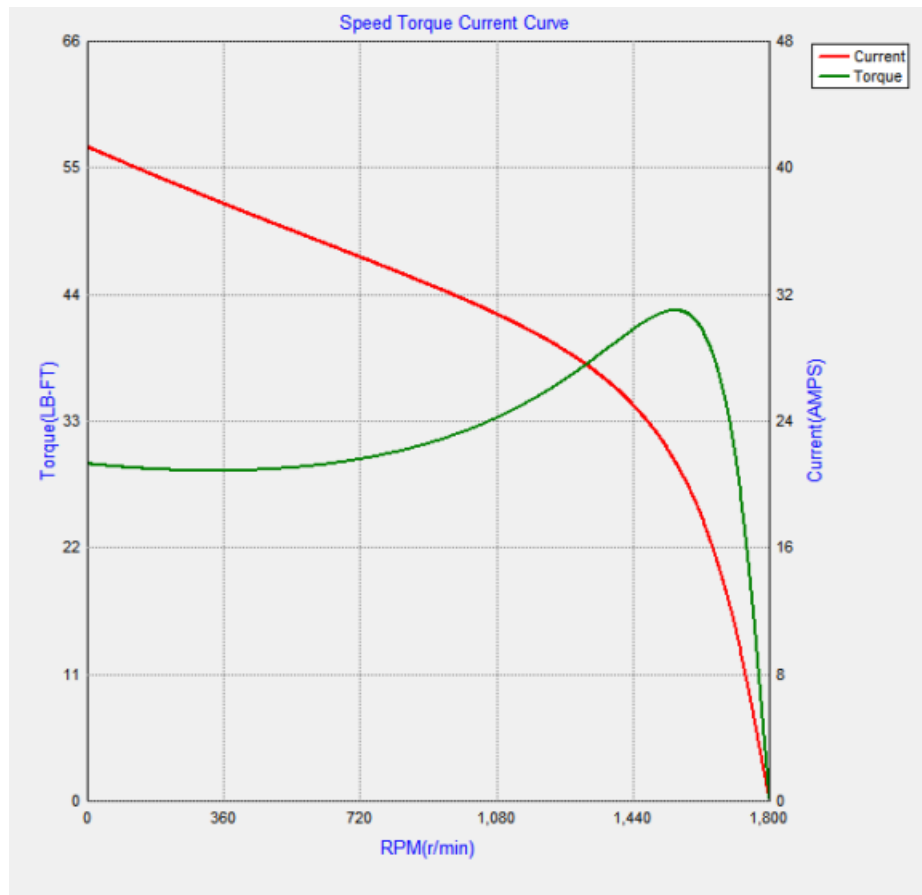
Marks:

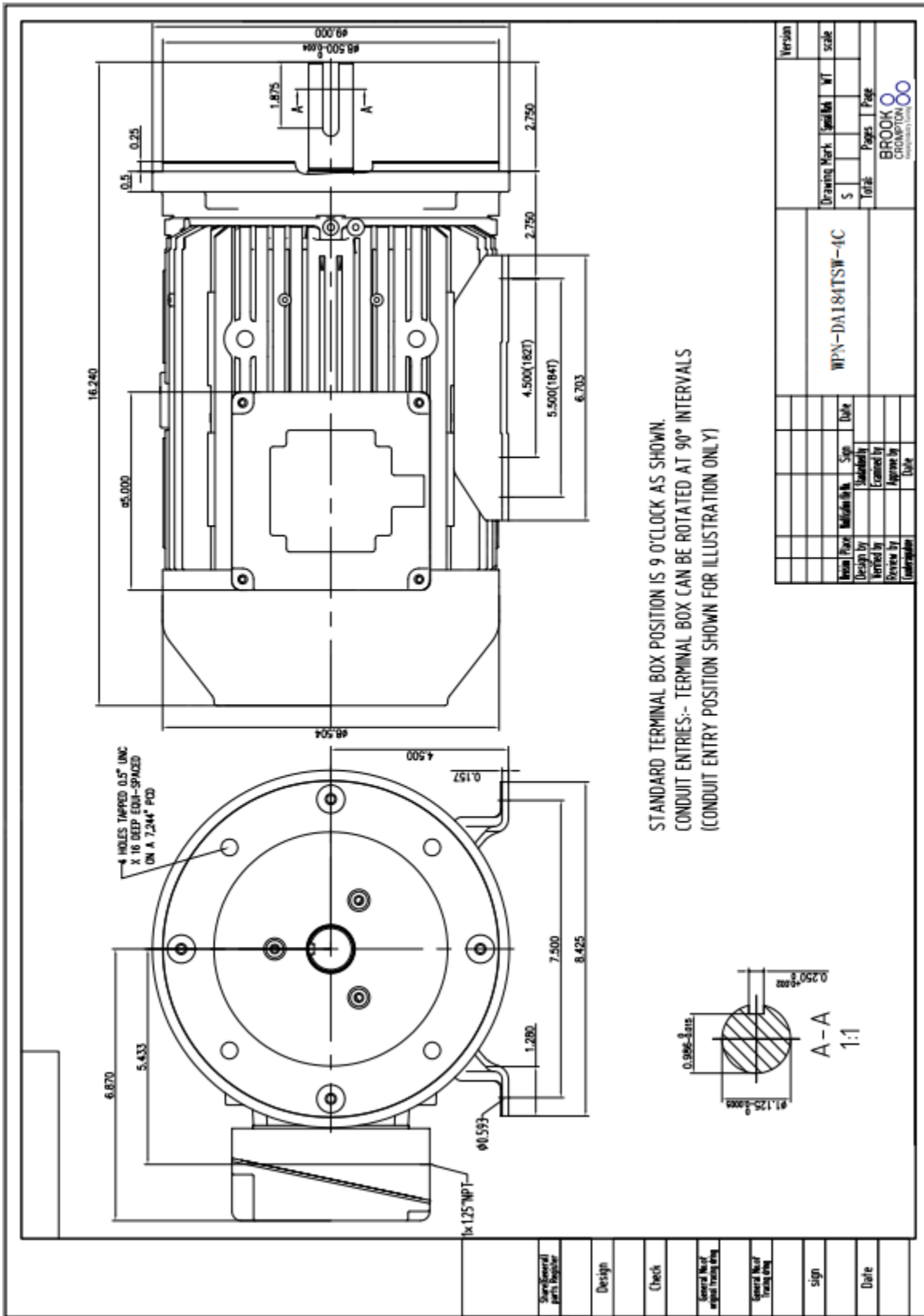
LOAD %	150.0	125.0	100.0	75.0	50.0	25.0
% EFF	87.07	88.70	89.95	90.64	90.20	86.07
% PF	85.05	83.89	80.82	74.35	62.15	40.75
AMPS(460V)	9.407	7.80	6.39	5.17	4.15	3.31

TORQUE(FL) LB-FT 20.1 TORQUE(LR)%FL 275 TORQUE(BD)%FL 280
 AMPS(LR 460V) 49.8 PF AT START 23

Other Useful Information for Application:

Rotor Inertia: Lb-Ft ² (Kg-m ²):	0.432(0.018)
Max load inertia: Lb-Ft ² (Kg-m ²):	
Load Type:	Square Torque/Speed Characteristic
Voltage:	100%
Number of starts per hour:	2 Cold or 1 Hot
Acceleration Time with maximum inertia (sec):	7.8
Safe stall time (sec): Cold/Hot	31/12





Marks:

Connection Diagram

