

Product Information Packet

February 5, 2024

Data shown is for the current revision model #. Ensure your nameplate model # matches.

Model Number:	WPN-DA286TSW-4C
Catalog Number:	BA4N030V4C
Connection Diagram:	See Page 4
Outline Drawing:	See Page 3

Table of Contents

Specification	01
Performance Characteristics	02
Outline Drawing	03
Connection Drawing(s)	04

Marks:

MODEL NUMBER:	BA4N030V4C	Estimated Weight:	380 Lbs
Outline Drawing:	See Page 3	Time Rating:	S1
Connection Diagram:	See Page 4	Enclosure:	TEFC
Design Code:	B	Encl Construction:	GP
Type:	KS	Ambient Max(°C):	40
Frame:	286TC	Alt Ambient Max(°C):	40
Phases:	3	Insulation Class:	F
Poles:	4	NEMA Design:	B
Output Power:	30HP	Nominal Efficiency:	93.6 %
RPM:	1775	Guaranteed Efficiency:	92.4 %
Voltage:	208-230/460	3/4 Load Efficiency:	94.5 %
Hertz:	60	KVA Code:	K
Amps - FL:	68.6/34.3	Max KVAR:	9
Service Factor:	1.25@60Hz	Power Factor:	86%
Alt Service Factor:	1.15	Bearing - DE:	6310-ZZC3
		Bearing - ODE:	6308-ZZC3

Enclosure is Totally Enclosed Fan-Cooled

Stamped Nameplate Notes:

12-60HZ CONSTANT TORQUE, 6-60Hz VARIABLE TORQUE

50HZ DATA:
 190-200/400V
 79.4/39.7AMPS
 RPM 1475
 SF 1.0

CSA APPROVED FOR CLASS I;DIVISION 2; GROUPS A, B, C & D,ZONE 2; GROUPS IIA & IIB T3 WITH VFD

Additional Information:

F1/F2/F3/ROUND BODY MOUNTING USING REMOVABLE/REPOSITIONABLE FEET
 INVERTER DUTY: CT5:1(12Hz~60Hz)@100%TN, CT15:1(4Hz~60Hz)@66.7%TN, VT20:1

Performance Characteristics

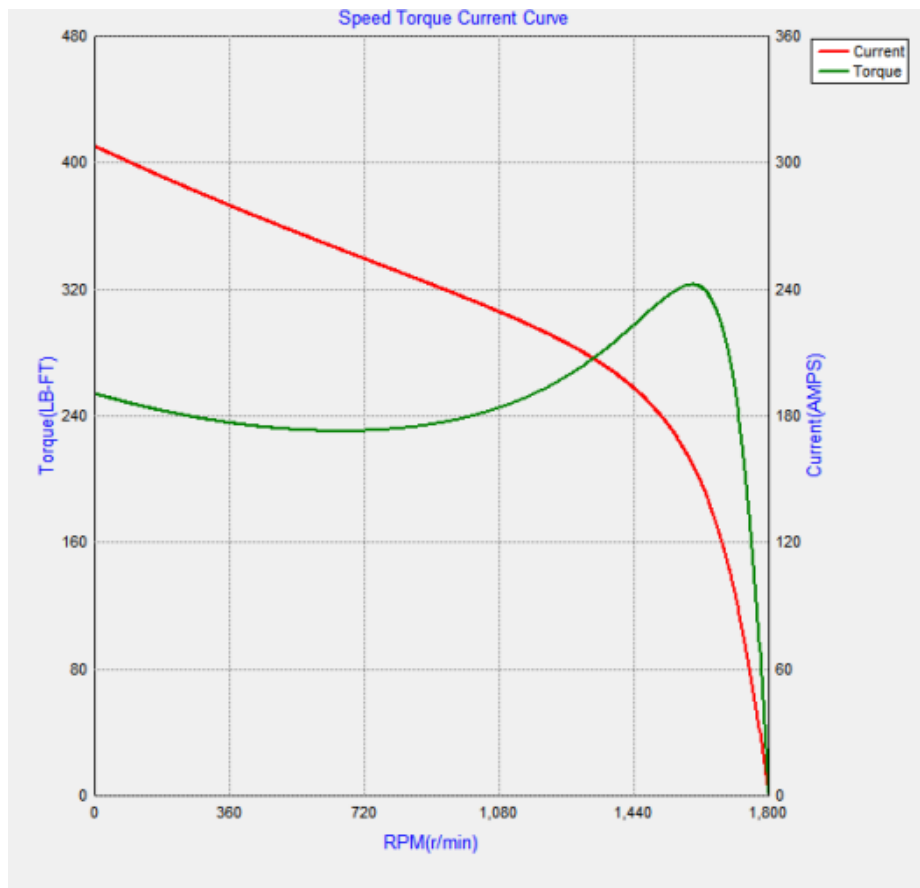
Marks:

LOAD %	150.0	125.0	100.0	75.0	50.0	25.0
% EFF	93.28	93.94	94.39	94.50	93.87	90.63
% PF	88.23	87.66	85.55	80.67	70.60	50.14
AMPS(460V)	50.33	41.92	34.20	27.17	20.83	15.19

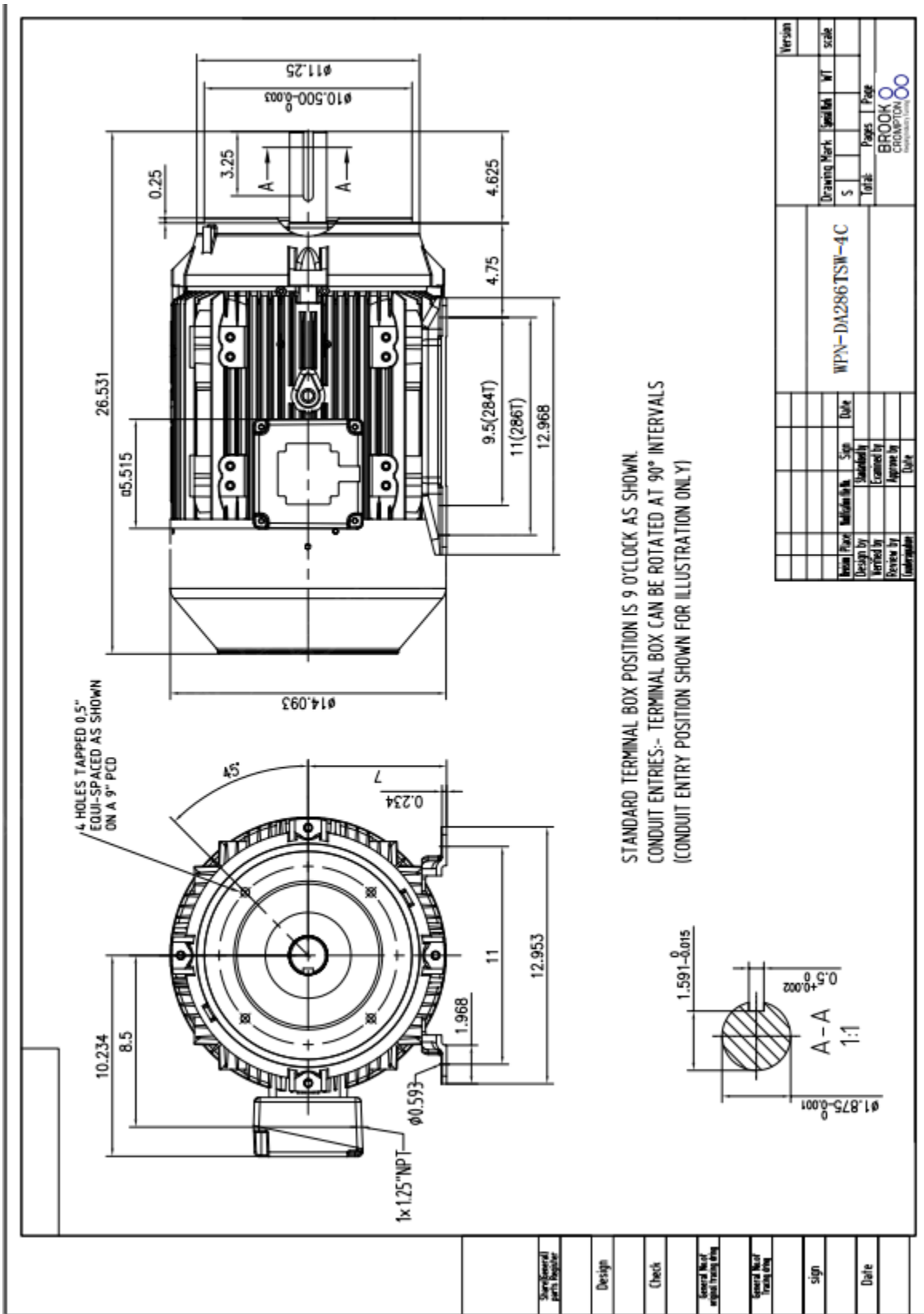
TORQUE(FL) LB-FT 118.37 TORQUE(LR)%FL 211 TORQUE(BD)%FL 360
 AMPS(LR 460V) 384 PF AT START 25

Other Useful Information for Application:

Rotor Inertia: Lb-Ft ² (Kg-m ²):	5.340(0.224)
Max load inertia: Lb-Ft ² (Kg-m ²):	
Load Type:	Square Torque/Speed Characteristic
Voltage:	100%
Number of starts per hour:	2 Cold or 1 Hot
Acceleration Time with maximum inertia (sec):	13.4
Safe stall time (sec): Cold/Hot	27/11



Place GE's Outline drawing



Marks:

Connection Diagram

Thermistor Connection 235A3027VD

