

Product Information Packet

February 5, 2024

Data shown is for the current revision model #. Ensure your nameplate model # matches.

| | |
|----------------------------|-----------------------|
| Model Number: | WPN-DA145TSP-4 |
| Catalog Number: | BA4N1.5V4 |
| Connection Diagram: | See Page 4 |
| Outline Drawing: | See Page 3 |

Table of Contents

| | |
|-----------------------------|----|
| Specification | 01 |
| Performance Characteristics | 02 |
| Outline Drawing | 03 |
| Connection Drawing(s) | 04 |

Marks:

| | | | |
|----------------------------|-------------|-------------------------------|-----------|
| MODEL NUMBER: | BA4N1.5V4 | Estimated Weight: | 40 Lbs |
| Outline Drawing: | See Page 3 | Time Rating: | S1 |
| Connection Diagram: | See Page 4 | Enclosure: | TEFC |
| Design Code: | B | Encl Construction: | GP |
| Type: | KS | Ambient Max(°C): | 40 |
| Frame: | 145T | Alt Ambient Max(°C): | 40 |
| Phases: | 3 | Insulation Class: | F |
| Poles: | 4 | NEMA Design: | B |
| Output Power: | 1.5HP | Nominal Efficiency: | 86.5 % |
| RPM: | 1750 | Guaranteed Efficiency: | 84.0 % |
| Voltage: | 208-230/460 | 3/4 Load Efficiency: | 86.2 % |
| Hertz: | 60 | KVA Code: | K |
| Amps - FL: | 4.09/2.05 | Max KVAR: | 9 |
| Service Factor: | 1.25@60Hz | Power Factor: | 78% |
| Alt Service Factor: | 1.15 | Bearing - DE: | 6205-ZZC3 |
| | | Bearing - ODE: | 6203-ZZC3 |

Enclosure is Totally Enclosed Fan-Cooled

Stamped Nameplate Notes:

12-60HZ CONSTANT TORQUE, 6-60Hz VARIABLE TORQUE

50HZ DATA:
 190-200/400V
 4.84/2.42AMPS
 RPM 1455
 SF 1.0

CSA APPROVED FOR CLASS I;DIVISION 2; GROUPS A, B, C & D,ZONE 2; GROUPS IIA & IIB T3 WITH VFD

Additional Information:

F1/F2/F3/ROUND BODY MOUNTING USING REMOVABLE/REPOSITIONABLE FEET
 INVERTER DUTY: CT5:1(12Hz~60Hz)@100%TN, CT15:1(4Hz~60Hz)@66.7%TN, VT20:1

Performance Characteristics

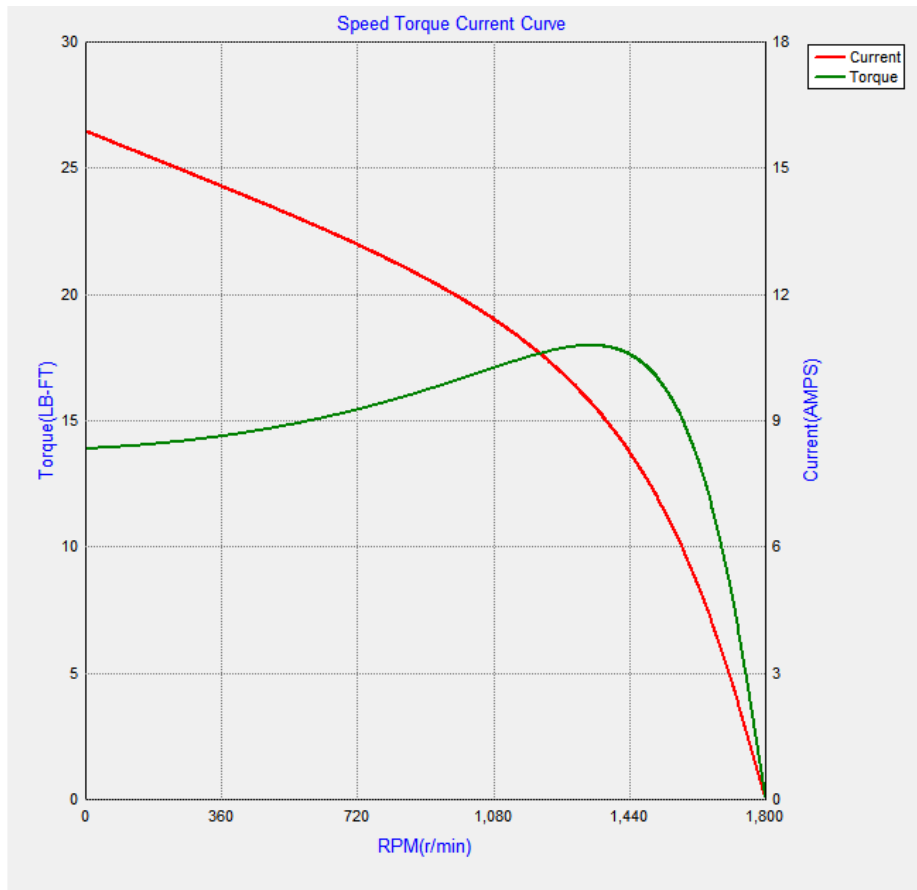
Marks:

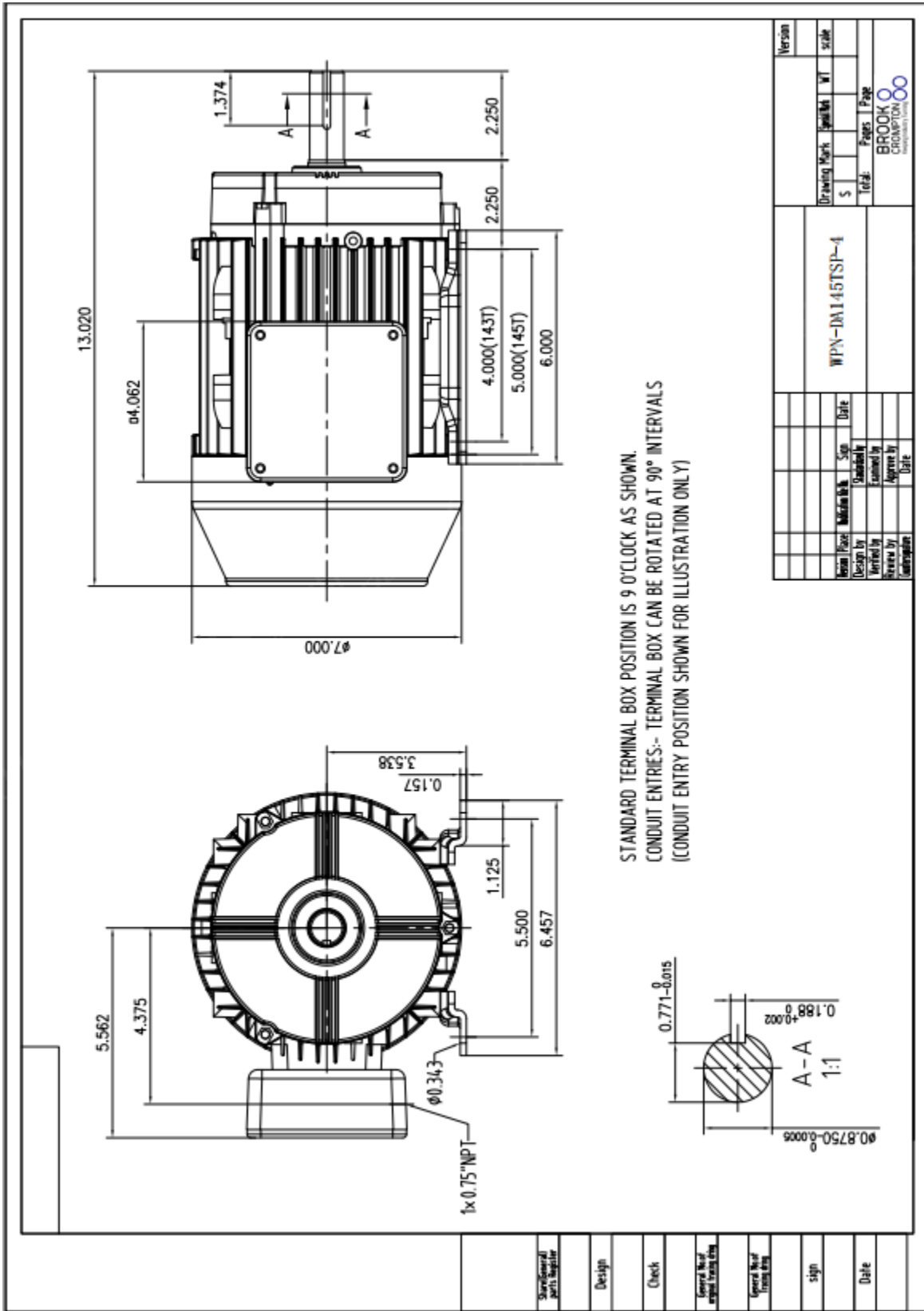
| LOAD % | 150.0 | 125.0 | 100.0 | 75.0 | 50.0 | 25.0 |
|------------|-------|-------|-------|-------|-------|-------|
| % EFF | 85.22 | 86.09 | 86.51 | 86.24 | 84.45 | 77.56 |
| % PF | 83.92 | 81.85 | 78.96 | 71.15 | 58.77 | 37.03 |
| AMPS(460V) | 2.90 | 2.45 | 2.03 | 1.69 | 1.39 | 1.20 |

TORQUE(FL) LB-FT 6.00 TORQUE(LR)%FL 310 TORQUE(BD)%FL 380
 AMPS(LR 460V) 16.52 PF AT START 18

Other Useful Information for Application:

| | |
|--|------------------------------------|
| Rotor Inertia: Lb-Ft ² (Kg-m ²): | 0.088(0.004) |
| Max load inertia: Lb-Ft ² (Kg-m ²): | |
| Load Type: | Square Torque/Speed Characteristic |
| Voltage: | 100% |
| Number of starts per hour: | 2 Cold or 1 Hot |
| Acceleration Time with maximum inertia (sec): | 6.1 |
| Safe stall time (sec): Cold/Hot | 43/17 |





Marks:

Connection Diagram

