

Product Information Packet

February 5, 2024

Data shown is for the current revision model #. Ensure your nameplate model # matches.

Model Number:	WPN-DA184TSX-6C
Catalog Number:	BA6N002V3C
Connection Diagram:	See Page 4
Outline Drawing:	See Page 3

Table of Contents

Specification	01
Performance Characteristics	02
Outline Drawing	03
Connection Drawing(s)	04

Marks:

MODEL NUMBER:	BA6N002V3C	Estimated Weight:	112 Lbs
Outline Drawing:	See Page 3	Time Rating:	S1
Connection Diagram:	See Page 4	Enclosure:	TEFC
Design Code:	B	Encl Construction:	GP
Type:	KS	Ambient Max(°C):	40
Frame:	184TS	Alt Ambient Max(°C):	40
Phases:	3	Insulation Class:	F
Poles:	6	NEMA Design:	B
Output Power:	2.0HP	Nominal Efficiency:	88.5 %
RPM:	1175	Guaranteed Efficiency:	86.5 %
Voltage:	208/416	3/4 Load Efficiency:	88.0 %
Hertz:	60	KVA Code:	J
Amps - FL:	6.82/3.41	Max KVAR:	8.0
Service Factor:	1.25@60Hz	Power Factor:	69%
Alt Service Factor:	1.15	Bearing - DE:	6206-ZZC3
		Bearing - ODE:	6205-ZZC3

Enclosure is Totally Enclosed Fan-Cooled

Stamped Nameplate Notes:

12-60HZ CONSTANT TORQUE, 6-60Hz VARIABLE TORQUE

50HZ DATA:
RPM 975
SF 1.0

CSA APPROVED FOR CLASS I;DIVISION 2; GROUPS A, B, C & D,ZONE 2; GROUPS IIA & IIB T3 WITH VFD

Additional Information:

F1/F2/F3/ROUND BODY MOUNTING USING REMOVABLE/REPOSITIONABLE FEET
INVERTER DUTY: CT5:1(12Hz~60Hz)@100%TN, CT15:1(4Hz~60Hz)@66.7%TN, VT20:1

Performance Characteristics

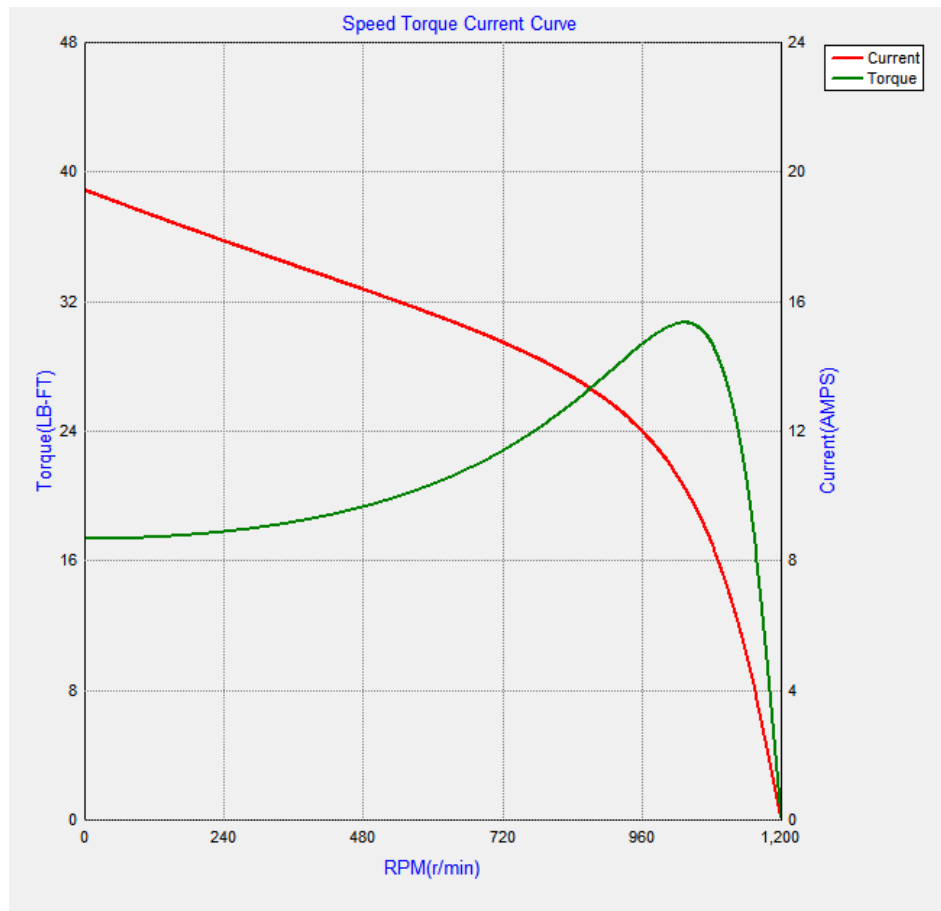
Marks:

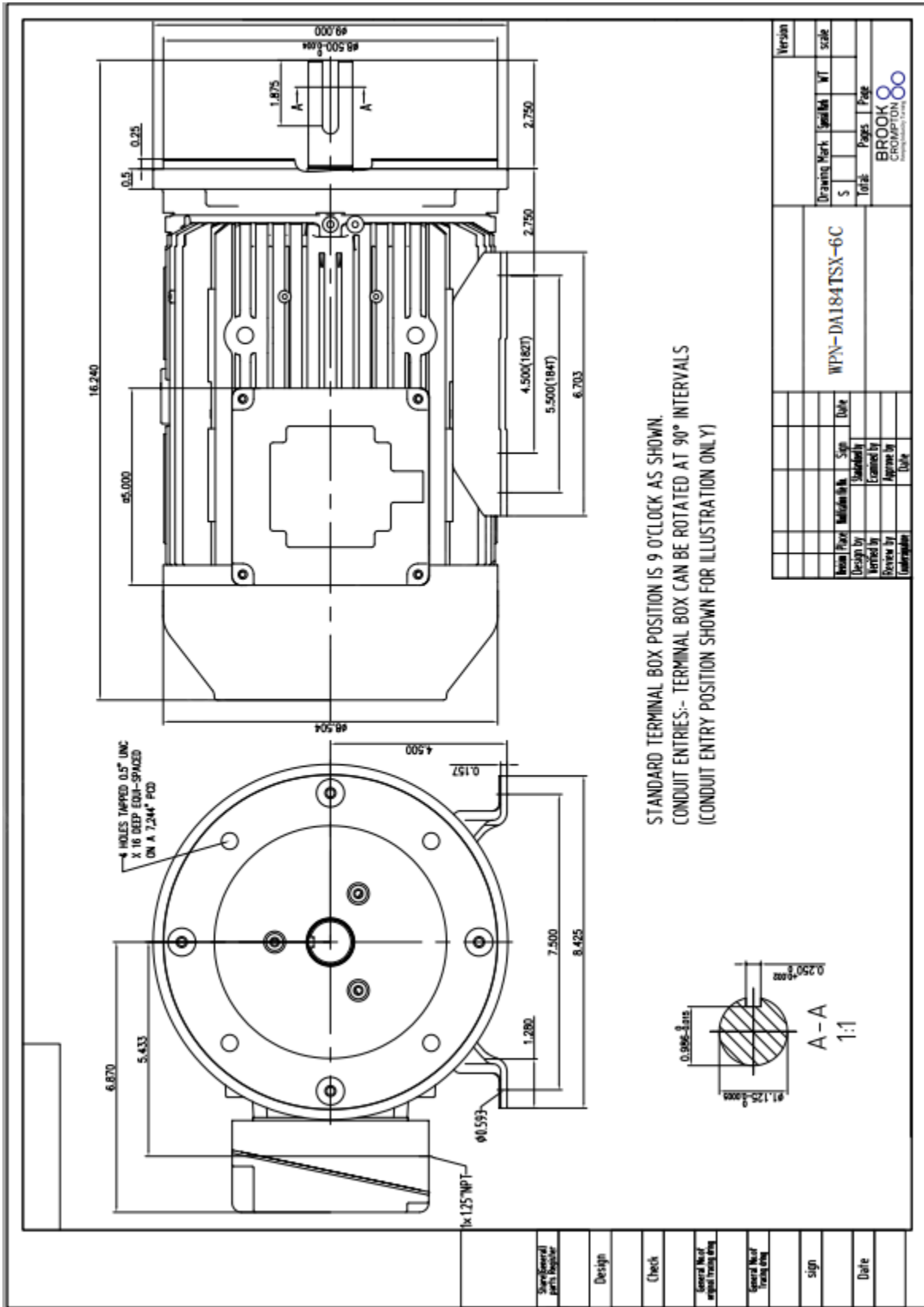
LOAD %	150.0	125.0	100.0	75.0	50.0	25.0
% EFF	87.7	88.3	88.5	88.0	86.1	79.4
% PF	76.8	73.9	69.0	60.9	48.0	28.4
AMPS(460V)	4.20	3.60	3.08	2.63	2.28	2.09

TORQUE(FL) LB-FT 9.0 TORQUE(LR)%FL 196 TORQUE(BD)%FL 336
 AMPS(LR 460V) 20.2 PF AT START 25

Other Useful Information for Application:

Rotor Inertia: Lb-Ft ² (Kg-m ²):	0.608(0.026)
Max load inertia: Lb-Ft ² (Kg-m ²):	
Load Type:	Square Torque/Speed Characteristic
Voltage:	100%
Number of starts per hour:	2 Cold or 1 Hot
Acceleration Time with maximum inertia (sec):	6.4
Safe stall time (sec): Cold/Hot	77/32





STANDARD TERMINAL BOX POSITION IS 9 O'CLOCK AS SHOWN.
 CONDUIT ENTRIES:- TERMINAL BOX CAN BE ROTATED AT 90° INTERVALS
 (CONDUIT ENTRY POSITION SHOWN FOR ILLUSTRATION ONLY)

Version	Scale	WT	Scale
5			
Total Pages		Page	
Total		Page	
WPN-DA184TSX-6C 			

Marks:

Connection Diagram

