



# Product Information Packet

February 5, 2024

**Data shown is for the current revision model #. Ensure your nameplate model # matches.**

<b>Model Number:</b>	<b>WPN-DA254TSH-6C</b>
<b>Catalog Number:</b>	<b>BA6N7.5V3C</b>
<b>Connection Diagram:</b>	<b>See Page 4</b>
<b>Outline Drawing:</b>	<b>See Page 3</b>

## Table of Contents

Specification	01
Performance Characteristics	02
Outline Drawing	03
Connection Drawing(s)	04

**Marks:**

<b>MODEL NUMBER:</b>	BA6N7.5V3C	<b>Estimated Weight:</b>	264 Lbs
<b>Outline Drawing:</b>	See Page 3	<b>Time Rating:</b>	S1
<b>Connection Diagram:</b>	See Page 4	<b>Enclosure:</b>	TEFC
<b>Design Code:</b>	B	<b>Encl Construction:</b>	<b>GP</b>
<b>Type:</b>	KS	<b>Ambient Max(°C):</b>	40
<b>Frame:</b>	254TC	<b>Alt Ambient Max(°C):</b>	40
<b>Phases:</b>	3	<b>Insulation Class:</b>	F
<b>Poles:</b>	6	<b>NEMA Design:</b>	B
<b>Output Power:</b>	7.5HP	<b>Nominal Efficiency:</b>	91.0 %
<b>RPM:</b>	1175	<b>Guaranteed Efficiency:</b>	89.5 %
<b>Voltage:</b>	208/416	<b>3/4 Load Efficiency:</b>	91.0%
<b>Hertz:</b>	60	<b>KVA Code:</b>	H
<b>Amps - FL:</b>	21.01/10.48	<b>Max KVAR:</b>	7.1
<b>Service Factor:</b>	1.25@60Hz	<b>Power Factor:</b>	80%
<b>Alt Service Factor:</b>	1.15	<b>Bearing - DE:</b>	6309-ZZC3
		<b>Bearing - ODE:</b>	6307-ZZC3

**Enclosure is Totally Enclosed Fan-Cooled**

**Stamped Nameplate Notes:**

12-60HZ CONSTANT TORQUE, 6-60Hz VARIABLE TORQUE

50HZ DATA:  
RPM 975  
SF 1.0

CSA APPROVED FOR CLASS I;DIVISION 2; GROUPS A, B, C & D,ZONE 2; GROUPS IIA & IIB T3 WITH VFD

**Additional Information:**

F1/F2/F3/ROUND BODY MOUNTING USING REMOVABLE/REPOSITIONABLE FEET  
INVERTER DUTY: CT5:1(12Hz~60Hz)@100%TN, CT15:1(4Hz~60Hz)@66.7%TN, VT20:1

**Performance Characteristics**

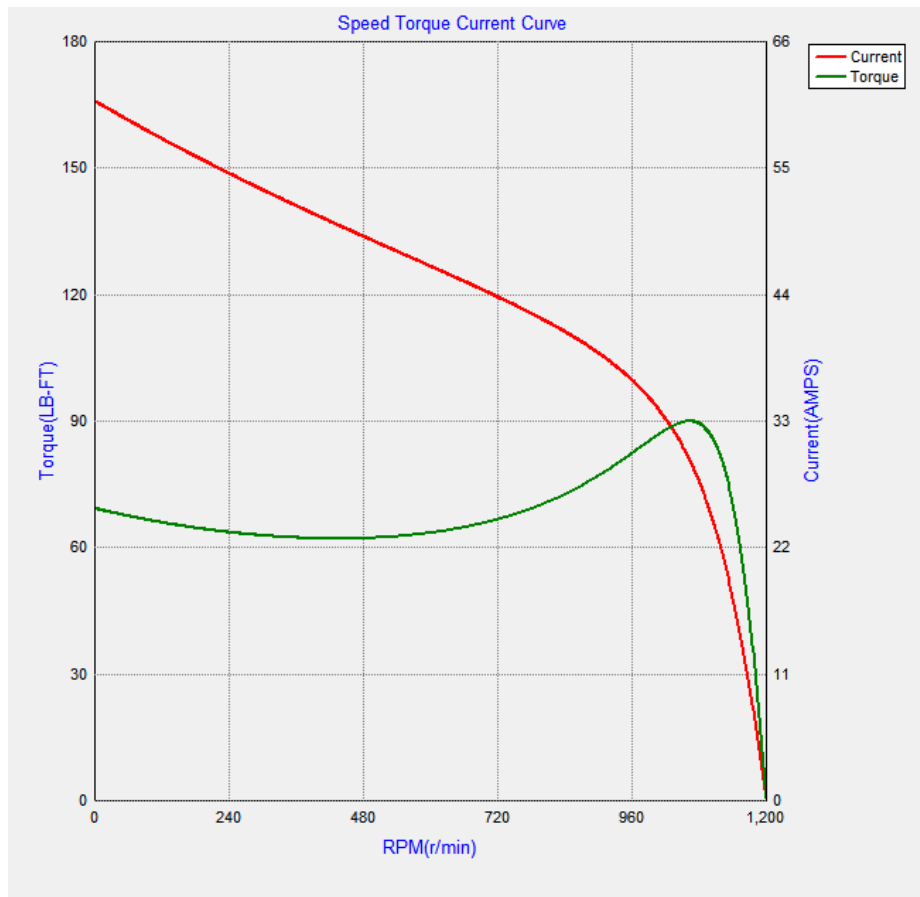
**Marks:**

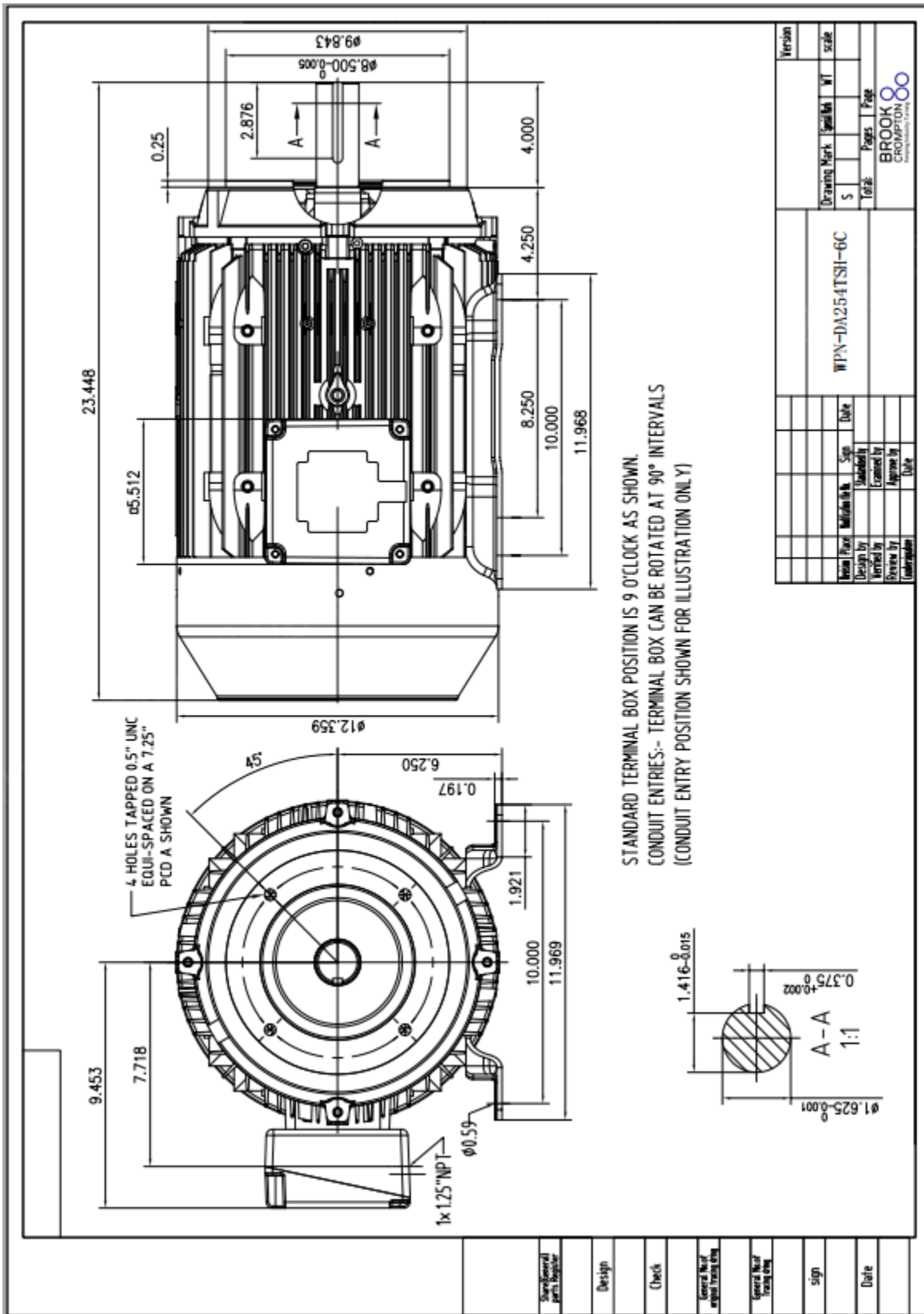
LOAD %	150.0	125.0	100.0	75.0	50.0	25.0
% EFF	89.7	90.5	91.0	91.0	90.0	85.5
% PF	83.5	82.6	80.0	74.4	63.2	41.2
AMPS(460V)	13.8	11.5	9.48	7.64	6.06	4.89

TORQUE(FL) LB-FT      33.0    TORQUE(LR)%FL      210    TORQUE(BD)%FL      260  
 AMPS(LR 460V)      60.4    PF AT START      38

**Other Useful Information for Application:**

Rotor Inertia: Lb-Ft <sup>2</sup> (Kg-m <sup>2</sup> ):	2.800(0.118)
Max load inertia: Lb-Ft <sup>2</sup> (Kg-m <sup>2</sup> ):	
Load Type:	Square Torque/Speed Characteristic
Voltage:	100%
Number of starts per hour:	2 Cold or 1 Hot
Acceleration Time with maximum inertia (sec):	8.7
Safe stall time (sec): Cold/Hot	63/26





Marks:

Connection Diagram

Thermistor Connection  
235A3027VD

