

Product Information Packet

February 5, 2024

Data shown is for the current revision model #. Ensure your nameplate model # matches.

Model Number:	WPN-DA254TSH-6
Catalog Number:	BA6N7.5V4
Connection Diagram:	See Page 4
Outline Drawing:	See Page 3

Table of Contents

Specification	01
Performance Characteristics	02
Outline Drawing	03
Connection Drawing(s)	04

Marks:

MODEL NUMBER:	BA6N7.5V4	Estimated Weight:	252 Lbs
Outline Drawing:	See Page 3	Time Rating:	S1
Connection Diagram:	See Page 4	Enclosure:	TEFC
Design Code:	B	Encl Construction:	GP
Type:	KS	Ambient Max(°C):	40
Frame:	254T	Alt Ambient Max(°C):	40
Phases:	3	Insulation Class:	F
Poles:	6	NEMA Design:	B
Output Power:	7.5HP	Nominal Efficiency:	91.0 %
RPM:	1175	Guaranteed Efficiency:	89.5 %
Voltage:	208-230/460	3/4 Load Efficiency:	91.0%
Hertz:	60	KVA Code:	H
Amps - FL:	19.0/9.48	Max KVAR:	7.1
Service Factor:	1.25@60Hz	Power Factor:	80%
Alt Service Factor:	1.15	Bearing - DE:	6309-ZZC3
		Bearing - ODE:	6307-ZZC3

Enclosure is Totally Enclosed Fan-Cooled

Stamped Nameplate Notes:

12-60HZ CONSTANT TORQUE, 6-60Hz VARIABLE TORQUE

50HZ DATA:
 190-200/400V
 22.6/11.3AMPS
 RPM 975
 SF 1.0

CSA APPROVED FOR CLASS I;DIVISION 2; GROUPS A, B, C & D,ZONE 2; GROUPS IIA & IIB T3 WITH VFD

Additional Information:

F1/F2/F3/ROUND BODY MOUNTING USING REMOVABLE/REPOSITIONABLE FEET
 INVERTER DUTY: CT5:1(12Hz~60Hz)@100%TN, CT15:1(4Hz~60Hz)@66.7%TN, VT20:1

Performance Characteristics

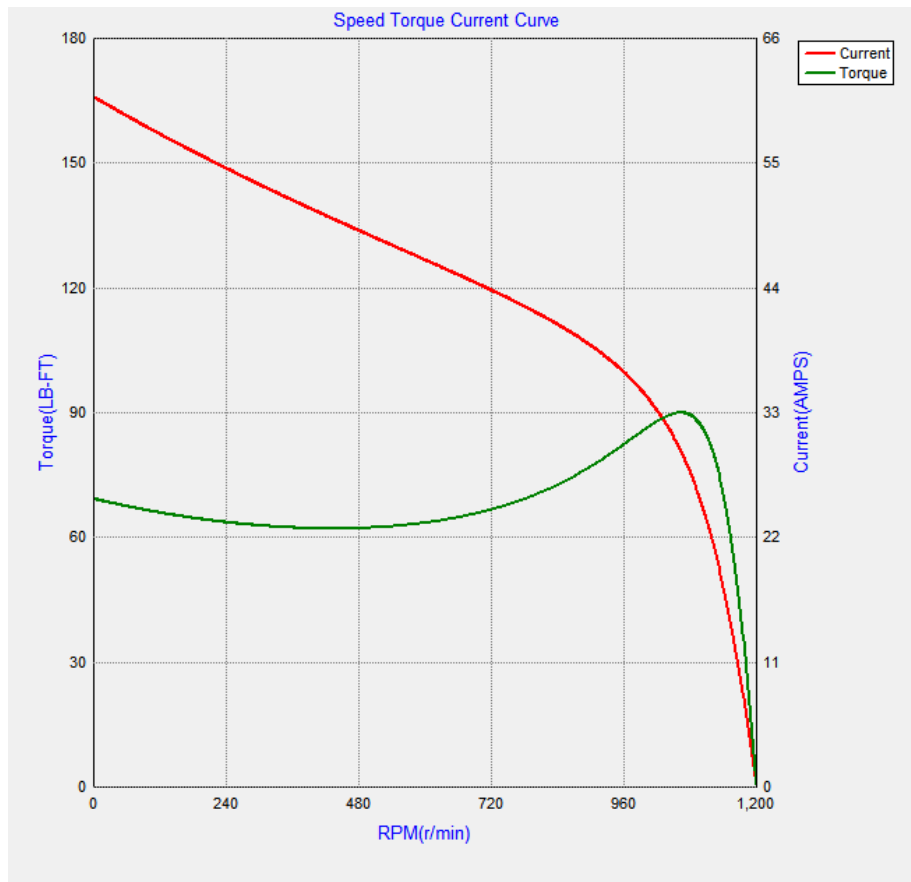
Marks:

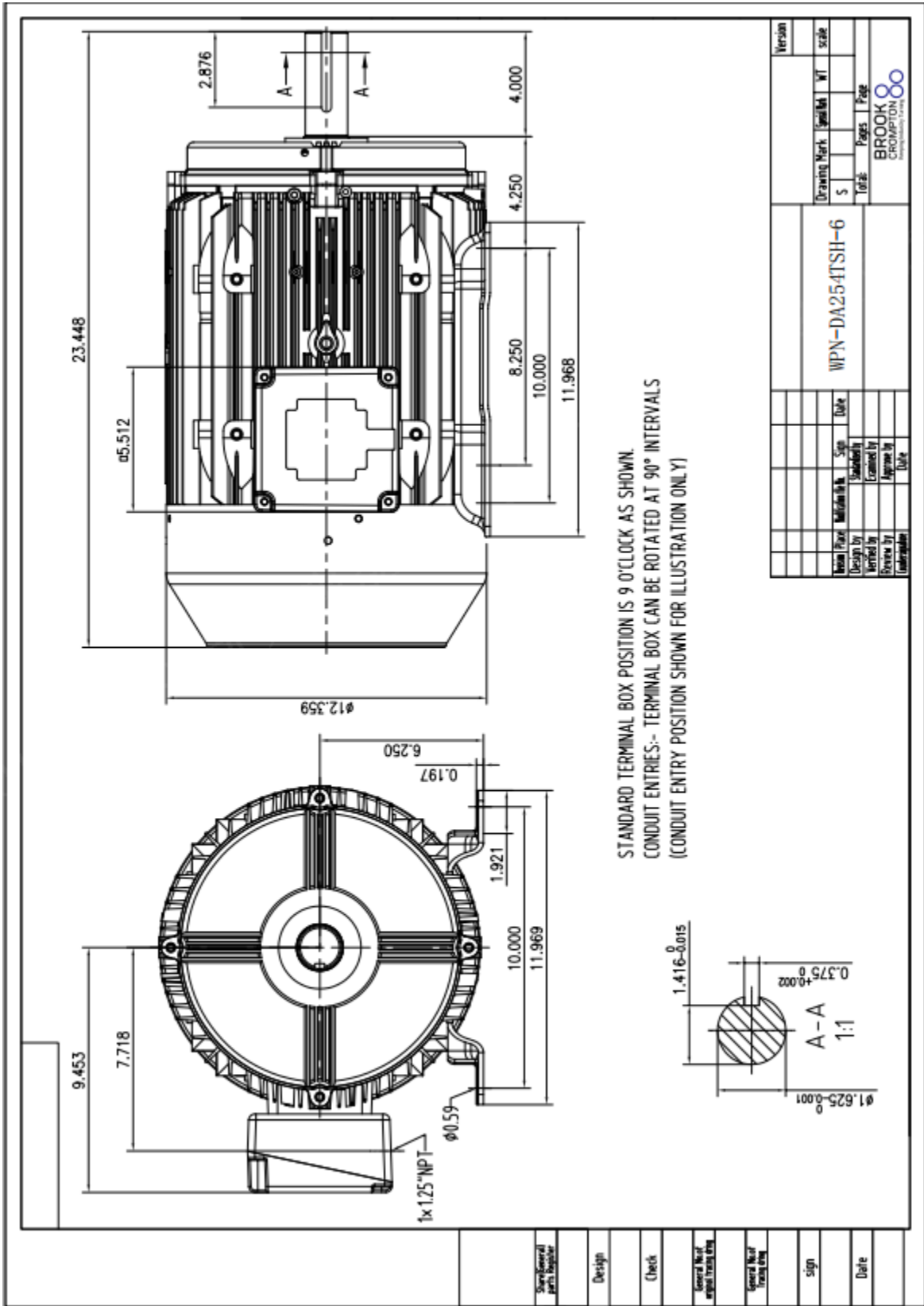
LOAD %	150.0	125.0	100.0	75.0	50.0	25.0
% EFF	89.7	90.5	91.0	91.0	90.0	85.5
% PF	83.5	82.6	80.0	74.4	63.2	41.2
AMPS(460V)	13.8	11.5	9.48	7.64	6.06	4.89

TORQUE(FL) LB-FT 33.0 TORQUE(LR)%FL 210 TORQUE(BD)%FL 260
 AMPS(LR 460V) 60.4 PF AT START 38

Other Useful Information for Application:

Rotor Inertia: Lb-Ft ² (Kg-m ²):	2.800(0.118)
Max load inertia: Lb-Ft ² (Kg-m ²):	
Load Type:	Square Torque/Speed Characteristic
Voltage:	100%
Number of starts per hour:	2 Cold or 1 Hot
Acceleration Time with maximum inertia (sec):	8.7
Safe stall time (sec): Cold/Hot	63/26





Marks:

Connection Diagram

Thermistor Connection 235A3027VD

