

Product Information Packet

February 5, 2024

Data shown is for the current revision model #. Ensure your nameplate model # matches.

Model Number:	WPN-DF256TSW-4C
Catalog Number:	BC4N020V4C
Connection Diagram:	See Page 4
Outline Drawing:	See Page 3

Table of Contents

Specification	01
Performance Characteristics	02
Outline Drawing	03
Connection Drawing(s)	04

Marks:

MODEL NUMBER:	BC4N020V4C	Estimated Weight:	292 Lbs
Outline Drawing:	See Page 3	Time Rating:	S1
Connection Diagram:	See Page 4	Enclosure:	TEFC
Design Code:	B	Encl Construction:	GP
Type:	KS	Ambient Max(°C):	40
Frame:	256TC	Alt Ambient Max(°C):	40
Phases:	3	Insulation Class:	F
Poles:	4	NEMA Design:	B
Output Power:	20HP	Nominal Efficiency:	93.0 %
RPM:	1765	Guaranteed Efficiency:	91.7 %
Voltage:	208-230/460	3/4 Load Efficiency:	92.85 %
Hertz:	60	KVA Code:	K
Amps - FL:	47.1/23.5	Max KVAR:	9
Service Factor:	1.25@60Hz	Power Factor:	86%
Alt Service Factor:	1.15	Bearing - DE:	6309-ZZC3
		Bearing - ODE:	6307-ZZC3

Enclosure is Totally Enclosed Fan-Cooled

Stamped Nameplate Notes:

12-60HZ CONSTANT TORQUE, 6-60Hz VARIABLE TORQUE

50HZ DATA:
 190-200/400V
 54.7/27.3AMPS
 RPM 1470
 SF 1.0

CSA APPROVED FOR CLASS I;DIVISION 2; GROUPS A, B, C & D,ZONE 2; GROUPS IIA & IIB T3 WITH VFD

Additional Information:

F1/F2/F3/ROUND BODY MOUNTING USING REMOVABLE/REPOSITIONABLE FEET
 INVERTER DUTY: CT5:1(12Hz~60Hz)@100%TN, CT15:1(4Hz~60Hz)@66.7%TN, VT20:1

Performance Characteristics

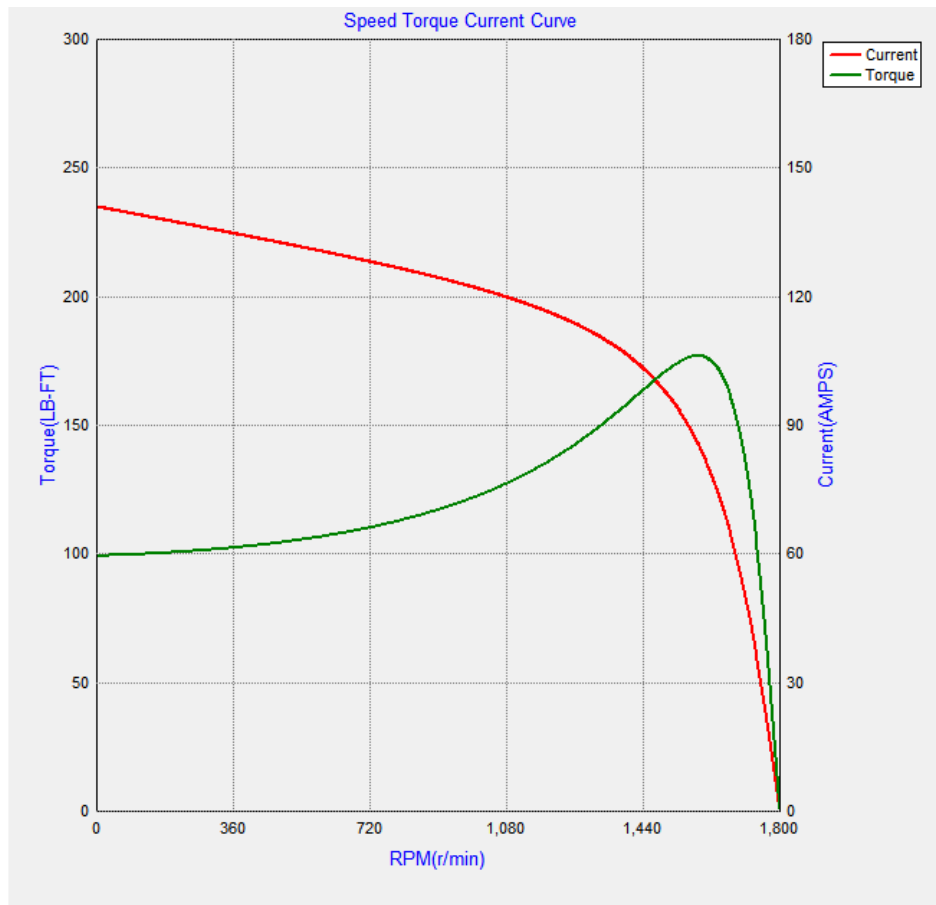
Marks:

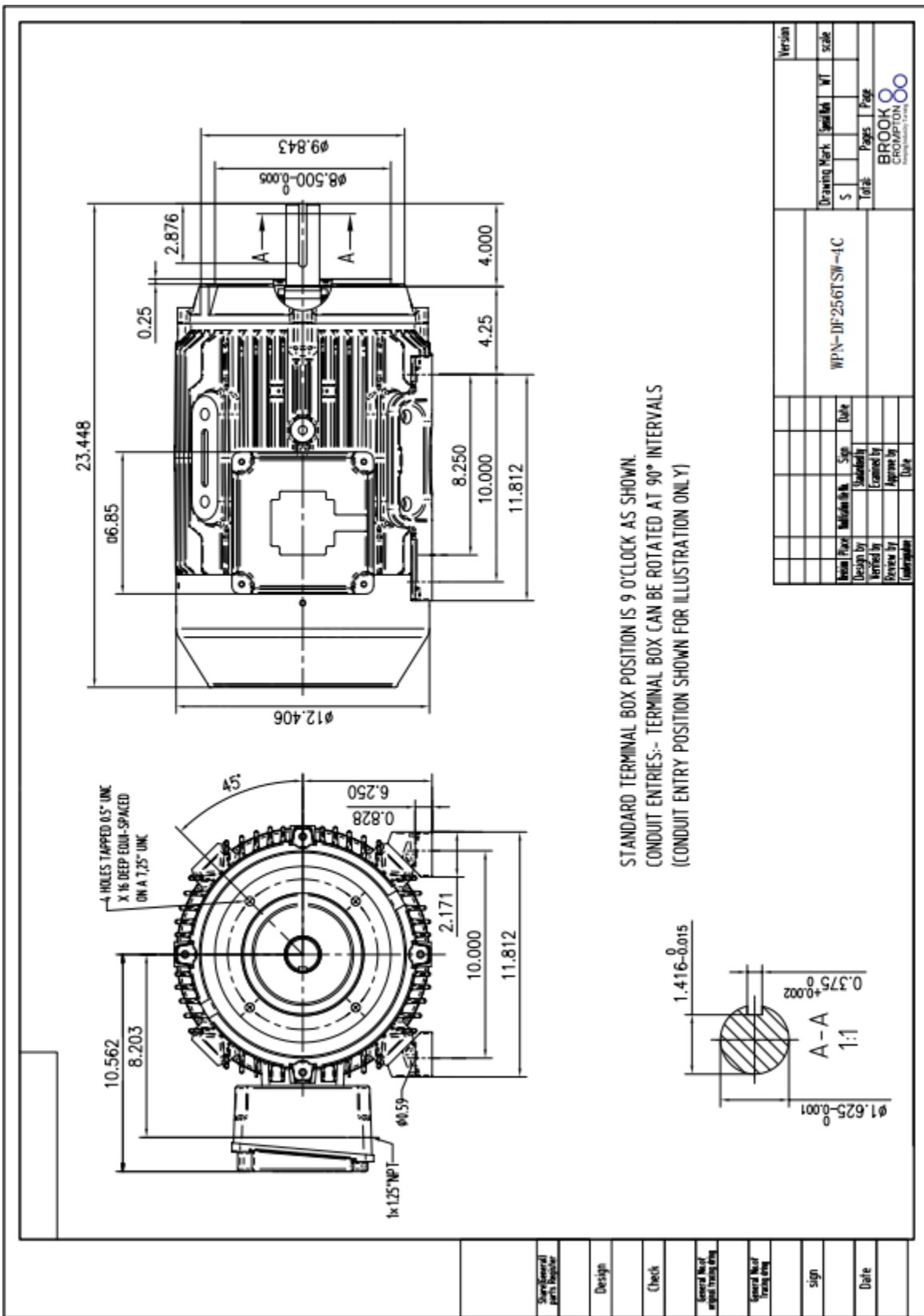
LOAD %	150.0	125.0	100.0	75.0	50.0	25.0
% EFF	90.97	91.95	93.01	92.85	92.07	88.00
% PF	86.96	86.71	85.79	79.83	69.24	48.13
AMPS(460V)	35.70	29.52	23.60	19.05	14.77	11.11

TORQUE(FL) LB-FT 81.16 TORQUE(LR)%FL 202 TORQUE(BD)%FL 292
 AMPS(LR 460V) 178 PF AT START 22

Other Useful Information for Application:

Rotor Inertia: Lb-Ft ² (Kg-m ²):	3.240(0.136)
Max load inertia: Lb-Ft ² (Kg-m ²):	
Load Type:	Square Torque/Speed Characteristic
Voltage:	100%
Number of starts per hour:	2 Cold or 1 Hot
Acceleration Time with maximum inertia (sec):	11.7
Safe stall time (sec): Cold/Hot	44/18





Version		Drawing Mark		Scale	
Rev	Date	By	Check	Scale	Scale
1					
Total		Pages		Page	
		BROOK CROMPTON			

Marks:

Connection Diagram

Thermistor Connection 235A3027VD

