

BALDOR® • RELIANCE 

Product Information Packet

CBXMN18242T

2//1.5HP,1760//1470RPM,3PH,60HZ,182TC,36

Part Detail							
Revision:	-	Status:	PRD/A	Change #:		Proprietary:	No
Type:	AC	Elec. Spec:	36WGY459	CD Diagram:	CD0005	Mfg Plant:	
Mech. Spec:		Layout:	36LYM726	Poles:	04	Created Date:	03-29-2021
Base:		Eff. Date:	04-23-2021	Leads:	9#16		

Specs			
Catalog Number:	CBXMN18242T	Electrically Isolated Bearing:	Not Electrically Isolated
Enclosure:	XPNV	Feedback Device:	NO FEEDBACK
Frame:	182TC	Heater Indicator:	No Heater
Frame Material:	Steel	Insulation Class:	F
Output @ Frequency:	2.000 HP @ 60 HZ	Inverter Code:	Inverter Duty
Synchronous Speed @ Frequency:	1800 RPM @ 60 HZ	IP Rating:	NONE
Voltage @ Frequency:	460.0 V @ 60 HZ	KVA Code:	L
	230.0 V @ 60 HZ	Lifting Lugs:	No Lifting Lugs
XP Class and Group:	CLI GP D; CLII GP F,G	Locked Bearing Indicator:	Locked Bearing
XP Division:	Division I	Motor Lead Termination:	Flying Leads
Agency Approvals:	CSA	Motor Type:	3630M
	CSA EEV	Mounting Arrangement:	F1
	UR	Power Factor:	79
Auxillary Box:	No Auxillary Box	Product Family:	General Purpose
Auxillary Box Lead Termination:	None	Pulley Face Code:	C-Face
Base Indicator:	Rigid	Rodent Screen:	None
Bearing Grease Type:	Polyrex EM (-20F +300F)	Shaft Ground Indicator:	No Shaft Grounding
Blower:	None	Shaft Rotation:	Reversible

Constant Torque Speed Range:	6	Speed Code:	Single Speed
Current @ Voltage:	5.400 A @ 230.0 V	Motor Standards:	NEMA
	5.000 A @ 190.0 V	Starting Method:	Direct on line
	2.700 A @ 460.0 V	Thermal Device - Bearing:	None
	2.500 A @ 380.0 V	Thermal Device - Winding:	Normally Closed Thermostat
Design Code:	B	Vibration Sensor Indicator:	No Vibration Sensor
Drip Cover:	No Drip Cover	Winding Thermal 1:	None
Duty Rating:	CONT	Winding Thermal 2:	None
		XP Temp Code:	T3C

Nameplate NP0887XPSLEV									
NO.					CC	010A			
S/N					TEMP CODE	T3C			
SPEC.	36-0000-0499				INV.TYPE	PWM			
CAT.NO.	CBXMN18242T				C HP FR	60		C HP TO	90
HP	2//1.5				CT HZ FROM	6		CT HZ TO	60
VOLTS	230/460//190/380				VT HZ FROM	6		VT HZ TO	60
AMPS	5.4/2.7//5/2.5				MAG CUR	2.9/1.45			
RPM	1760//1470				MX RPM	2700			
HZ	60	PH	3	CL	F	NOM.EFF.	87.5		
SER.F.	1.00		DES	B	SL HZ	1.3		WK2	0.28
FRAME	182TC		RATING	40C AMB-CONT					
	1.15 SF ON SINE WAVE								

Parts List		
Part Number	Description	Quantity
SA392843	SA 36-0000-0499	1.000 EA
RA383442	RA 36-0000-0499	1.000 EA
LB1119N	WARNING LABEL	1.000 EA
LC0145B01	CONNECTION LABEL	1.000 EA
NP0887XPSLEV	SS XP INV UL CSA-EEV CC CL-I GP-D	1.000 EA
85XU0407S04	4X1/4 U DRIVE PIN STAINLESS	2.000 EA
85XU0407S04	4X1/4 U DRIVE PIN STAINLESS	4.000 EA
MN416A01	TAG-INSTAL-MAINT no wire (2100/bx) 4/22	1.000 EA
NP0018F	ALUM UL XP CONDUIT BOX NAMEPLATE	1.000 EA
MJ1000A02	GREASE, MOBIL POLYREX EM - 124047	0.050 LB
HA3105A06	THRUBOLT- 3/8-16 X 10.500 X	4.000 EA
36EP1704A01	SPL FACE MTD FR. E.P. 36 FOR BRAKE MOTOR	1.000 EA
HW5100A06	W2420-025 WVY WSHR (WB)	1.000 EA
36EP1703A01	PU ENDPLATE, MACH	1.000 EA
84XN1032J20	SCREW, SOC 10-32 X 1 1/4"BMH4602	2.000 EA
HW4001A01	1/4 HX SOC PIPE PLG (F/S) ALLOY STEEL W/	2.000 EA
60XN1032A07	10-32 X .4375 TRUSS HEAD, TORX SERRATED	2.000 EA
HW3022E05	.125 DIA X .500 ROLLED SPRING PIN	1.000 EA
35CB3001A02SP	EXPL PROOF CONDUIT BOX, 3/4"PIPE TAP LEA	1.000 EA
11XW1032G06	10-32 X .38, TAPTITE II, HEX WSHR SLTD U	1.000 EA
HW3001B01	BRASS CUP WASHER, FOR #10 SCREW	1.000 EA
35CB3500A01SP	CONDUIT BOX LID, MACH	1.000 EA
51XN2520A16	SCREW, HEX WS SLT, ZN, 1/4-20 X 1.00	4.000 EA
65BK5100DQB	1-065-351-05-DQB BRAKE X	1.000 EA

Parts List (continued)		
Part Number	Description	Quantity
84XN3816J12	3/8-16X 3/4 SOCK HD, BK OX	4.000 EA
HW2501D13	KEY, 3/16 SQ X 1.375	1.000 EA
MG1500Y02	WILKOPON PRIMER YELLOW	0.022 GA
MG1025G29	WILKOFASST, 789.229, DARK CHARCOAL GRAY	0.022 GA
G0PA1000	PKG GRP, PRINT PK1026A06	1.000 EA
HW2501E16	KEY, 1/4 SQ X 1.750	1.000 EA
HA7000A02	KEY RETAINER RING, 1 1/8 DIA, 1 3/8 DIA	1.000 EA

AC Induction Motor Performance Data

Record # 87278

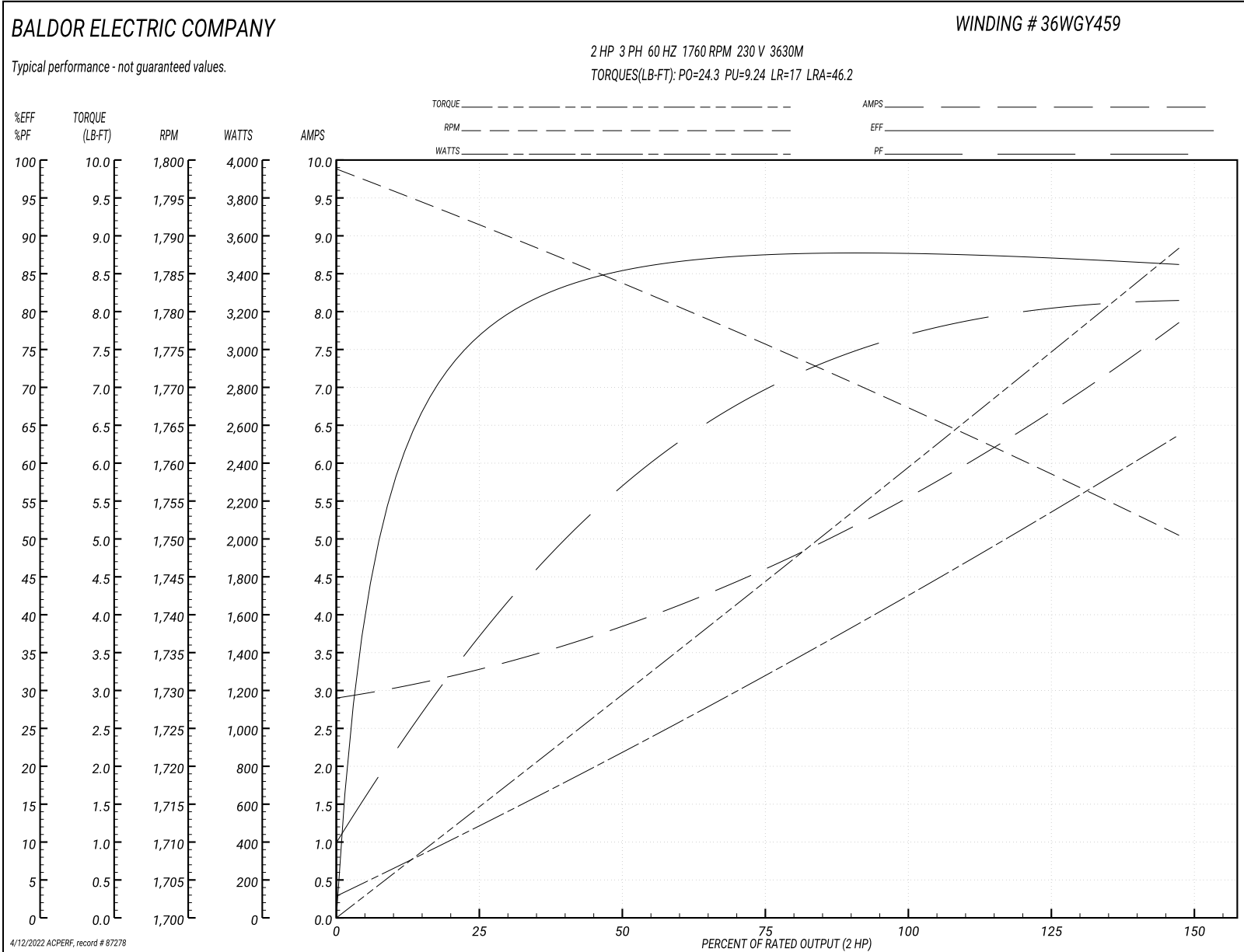
Typical performance - not guaranteed values

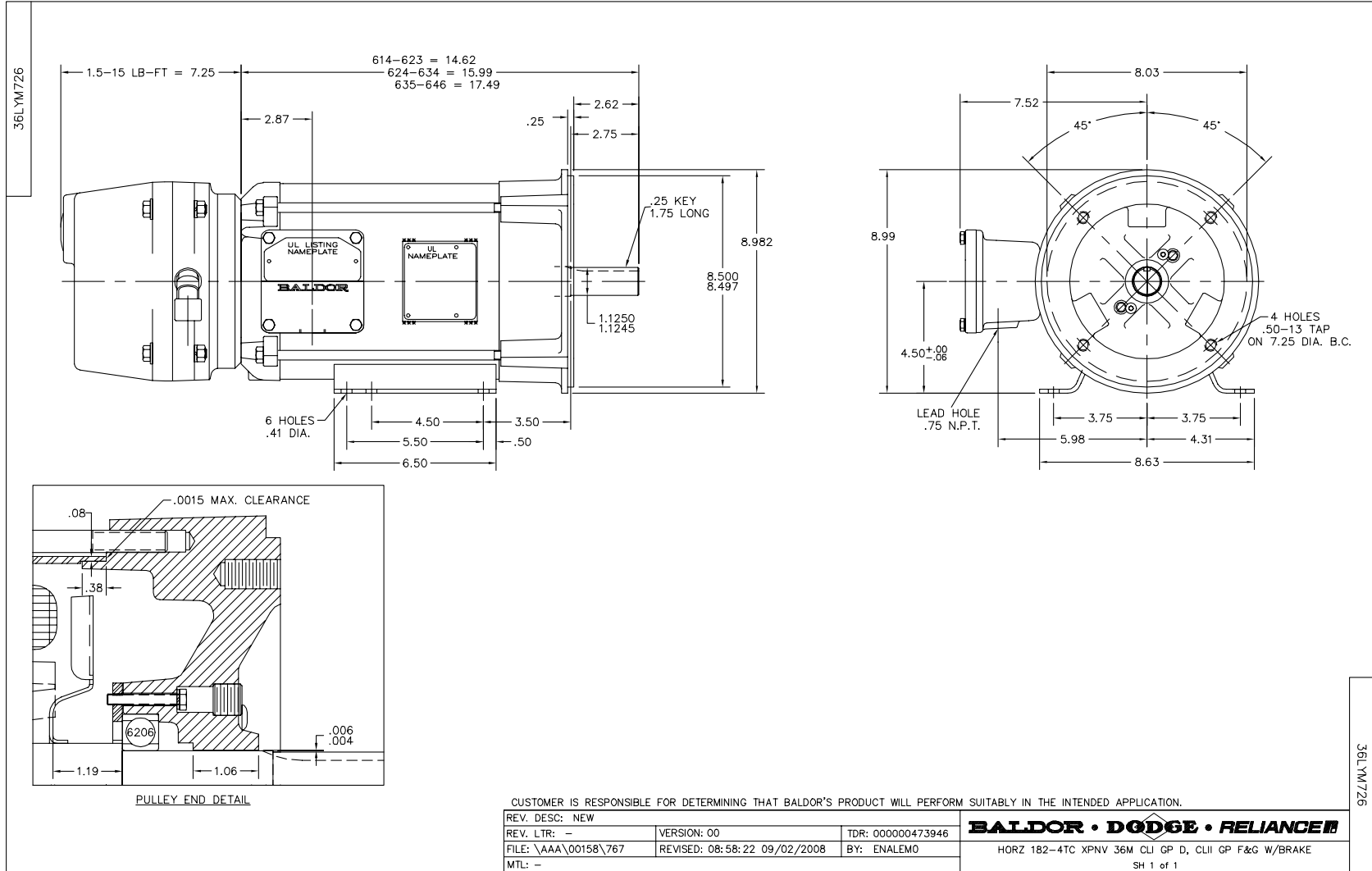
Winding: 36WGY459-R001		Type: 3630M		Enclosure: TENV	
Nameplate Data			230 V, 60 Hz: Low Voltage Connection		
Rated Output (HP)	2	Full Load Torque	5.963 LB-FT		
Volts	208-230/460	Start Configuration	direct on line		
Full Load Amps	5.8-5.4/2.7	Breakdown Torque	24.3 LB-FT		
R.P.M.	1760	Pull-up Torque	9.24 LB-FT		
Hz	60 Phase	3	Locked-rotor Torque	17 LB-FT	
NEMA Design Code	B KVA Code	L	Starting Current	46.2 A	
Service Factor (S.F.)	1.15	No-load Current	2.94 A		
NEMA Nom. Eff.	87.5	Power Factor	79	Line-line Res. @ 25°C	1.3303 Ω
Rating - Duty	40C AMB-CONT	Temp. Rise @ Rated Load	50°C		
S.F. Amps		Temp. Rise @ S.F. Load	55°C		
		Locked-rotor Power Factor	42.3		

Load Characteristics 230 V, 60 Hz, 2 HP

% of Rated Load	25	50	75	100	125	150	S.F.
Power Factor	38	58	69	77	79	82	78
Efficiency	77.4	85.6	87.2	87.3	87.9	85.9	87.7
Speed	1792	1784	1777	1764	1760	1751	1762
Line amperes	3.24	3.85	4.65	5.569	6.61	7.83	6.19

Performance Graph at 230V, 60Hz, 2.0HP Typical performance - Not guaranteed values





CD0005

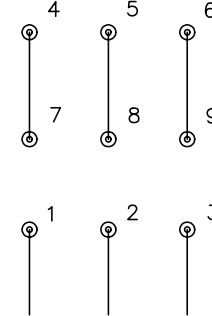


LOW VOLTAGE
(2Y)



LINE

HIGH VOLTAGE
(1Y)



LINE

NOTES:

1. INTERCHANGE ANY TWO LINE LEADS TO REVERSE ROTATION.
2. OPTIONAL THERMOSTATS ARE PROVIDED WHEN SPECIFIED.
3. ACTUAL NUMBER OF INTERNAL PARALLEL CIRCUITS MAY BE A MULTIPLE OF THOSE SHOWN ABOVE.
4. LEAD COLORS ARE OPTIONAL. LEADS MUST ALWAYS BE NUMBERED AS SHOWN.

REV. DESC: REVISE TO SHOW OPTIONAL COLORS			
REV. LTR: E	BY: JLP	REVISED: 01/19/99 10:15	TDR: 0171435
900000		FILE: AAA00005140	MDL: -
		MTL: -	

BALDOR ELECTRIC Co.

3PH, DV, 9 LEADS

CD0005

Marketing maintained PDF of MN416:

<http://www.baldor.com/support/Literature/Load.ashx/MN416?ManNumber=MN416>