

BALDOR® • RELIANCE 

Product Information Packet

CCPX251546T

15HP,1765//1470RPM,3PH,60HZ,254TC,XPFC,F

| Part Detail | | | | | | | |
|-------------|----|-------------|--------------|-------------|--------|---------------|------------|
| Revision: | H | Status: | PRD/A | Change #: | | Proprietary: | No |
| Type: | AC | Elec. Spec: | 09WGZ910 | CD Diagram: | CD0005 | Mfg Plant: | |
| Mech. Spec: | | Layout: | 09LY-000-321 | Poles: | 04 | Created Date: | 04-20-2019 |
| Base: | | Eff. Date: | 06-29-2021 | Leads: | 9#12 | | |

| Specs | | | |
|---------------------------------|---------------------------|--------------------------------|---------------------------|
| Catalog Number: | CCPX251546T | Duty Rating: | CONT |
| Enclosure: | XPFC | Electrically Isolated Bearing: | Not Electrically Isolated |
| Frame: | 254TC | Enclosure Modification: | Severe Duty Features |
| Frame Material: | Iron | Feedback Device: | NO FEEDBACK |
| Output @ Frequency: | 15.000 HP @ 60 HZ | Heater Indicator: | No Heater |
| | 10.000 HP @ 50 HZ | Insulation Class: | F |
| Synchronous Speed @ Frequency: | 1800 RPM @ 60 HZ | Inverter Code: | Inverter Duty |
| Voltage @ Frequency: | 190.0 V @ 50 HZ | IP Rating: | IP55 |
| | 230.0 V @ 60 HZ | KVA Code: | H |
| | 380.0 V @ 50 HZ | Lifting Lugs: | Standard Lifting Lugs |
| | 460.0 V @ 60 HZ | Locked Bearing Indicator: | Locked Bearing |
| XP Class and Group: | CLI GP C,D; CLII GP E,F,G | Motor Lead Termination: | Flying Leads |
| XP Division: | Division I | Motor Type: | 0944M |
| Agency Approvals: | UR | Mounting Arrangement: | F1 |
| | CSA EEV | Power Factor: | 83 |
| | CSA | Product Family: | Chemical Process Features |
| Auxillary Box: | No Auxillary Box | Pulley Face Code: | C-Face |
| Auxillary Box Lead Termination: | None | Rodent Screen: | None |

| | | | |
|-------------------------------------|-------------------------|------------------------------------|----------------------------|
| Base Indicator: | Rigid | RoHS Status: | ROHS NON-COMPLIANT |
| Bearing Grease Type: | Polyrex EM (-20F +300F) | Shaft Ground Indicator: | No Shaft Grounding |
| Blower: | None | Shaft Rotation: | Reversible |
| Constant Torque Speed Range: | 6 | Speed Code: | Single Speed |
| Current @ Voltage: | 38.000 A @ 208.0 V | Motor Standards: | NEMA |
| | 36.200 A @ 230.0 V | Starting Method: | Direct on line |
| | 30.400 A @ 190.0 V | Thermal Device - Bearing: | None |
| | 18.100 A @ 460.0 V | Thermal Device - Winding: | Normally Closed Thermostat |
| | 15.200 A @ 380.0 V | Vibration Sensor Indicator: | No Vibration Sensor |
| Design Code: | A | Winding Thermal 1: | None |
| Drip Cover: | No Drip Cover | Winding Thermal 2: | None |
| | | XP Temp Code: | T3C |

| Nameplate NP2033XPSLEV | | | | | | | | | | | |
|------------------------|----------------------------|--|--------|--------------|------------|-------|---------------------|----------|----------|------|--|
| NO. | | | | | CC | 010A | | | | | |
| S/N | | | | | TEMP CODE | T3C | | | | | |
| SPEC. | 09-0000-1334 | | | | INV.TYPE | PWM | | | | | |
| CAT.NO. | CCPX251546T | | | | C HP FR | 60 | | C HP TO | 90 | | |
| HP | 15//10 | | | | CT HZ FROM | 6 | | CT HZ TO | 60 | | |
| VOLTS | 230/460//190/380 | | | | VT HZ FROM | 6 | | VT HZ TO | 60 | | |
| AMPS | 36.2/18.1//30.4/15.2 | | | | MAG CUR | 7.6 | | | | | |
| RPM | 1765//1470 | | | | MX RPM | 2700 | | | | | |
| HZ | 60//50 | | PH | 3 | | CL | F | | NOM.EFF. | 92.4 | |
| SER.F. | 1.00 | | DES | A | | SL HZ | 1.2 | | WK2 | 1.93 | |
| FRAME | 254TC | | RATING | 40C AMB-CONT | | | | | | | |
| BLANK | 55C AMB @ 1.0 SF, 60C RISE | | | | | | | | | | |
| | 1.15SF ON SINEWAVE | | | | | | NEMA MG-1 PT.5,IP55 | | | | |
| | | | | | | | | | | | |

| Parts List | | |
|----------------|--|----------|
| Part Number | Description | Quantity |
| SA368683 | SA 09-0000-1334 | 1.000 EA |
| RA358203 | RA 09-0000-1334 | 1.000 EA |
| LB1115N | LABEL,LIFTING DEVICE (ON ROLLS) | 1.000 EA |
| LC0005E01 | SPL CONN.DIA./WARN.LABEL(LC0005/LB1119) | 1.000 EA |
| NP2033XPSLEV | SS XP INV UL CSA-EEV CC CL-I GP-C&D | 1.000 EA |
| 85XU0407S04 | 4X1/4 U DRIVE PIN STAINLESS | 2.000 EA |
| 85XU0407S04 | 4X1/4 U DRIVE PIN STAINLESS | 4.000 EA |
| MN416A01 | TAG-INSTAL-MAINT no wire (2100/bx) 4/22 | 1.000 EA |
| LB1081Z | ALUM XP CAUTION LABEL (ZK PLANT ONLY- | 1.000 EA |
| HW3201A01 | 1/2-13 EYEBOLT | 1.000 EA |
| HW1002A63 | WASHER, 5/8 HI-COLLAR SPRICKWASHER | 1.000 EA |
| 09FH1004A48P | FAN COVER, MACH, W/GRSR, RLF & DRN HOLE | 1.000 EA |
| HW1001A25 | LOCKWASHER 1/4, ZINC PLT .493 OD, .255 I | 3.000 EA |
| 10XN2520K14 | 1/4-20 X .88 HEX GRD 5 (20001) | 3.000 EA |
| 37FN3002B02 | EXFN, PLASTIC, 7.50 OD, 1.503 ID | 1.000 EA |
| HW2500A25 | WOODRUFF KEY USA #1008 #BLOW CARBON STEE | 1.000 EA |
| MJ1000A02 | GREASE, MOBIL POLYREX EM - 124047 | 0.080 LB |
| 09EP1700A70LP5 | FREP, MACH FOR GROUP C & GROUP E MTRS | 1.000 EA |
| 10XN3816K28 | 3/8-16 X 1.75 HEX HD CAP SCREW, GRADE 5 | 4.000 EA |
| HW1001A38 | LOCKWASHER 3/8, ZINC PLT .688 OD, .382 I | 4.000 EA |
| HA2009A39 | SLINGER FOR GROUP E MTRS - 208 BRG. | 1.000 EA |
| 80XN0632A10 | SET SCREW,#6-32 X .62 LG.HEX SOC. HD. | 2.000 EA |
| HW5100A08 | W3118-035 WVY WSHR (WB) | 1.000 EA |
| HA4017A03 | .125 X 1.75 GREASE EXT (F/S) | 1.000 EA |

| Parts List (continued) | | |
|------------------------|--|----------|
| Part Number | Description | Quantity |
| HA4017A08 | .125X3.50 GREASER EXTEN. | 1.000 EA |
| HW4019A01 | PIPE COUPLING 1/8 NPT,STEEL,ZINC COATING | 1.000 EA |
| HA4051A00 | PLASTIC CAP FOR GREASE FITTING | 1.000 EA |
| HW4500A21 | 1618BALEMITE FITTING 825 UNIVERSAL | 1.000 EA |
| HW4500A20 | 1/8NPT SL PIPE PLUG | 1.000 EA |
| HW4505A02 | BREATHER/DRAIN-EXP PROOF-.250-18 PTF AIS | 1.000 EA |
| HW3023E06 | .125 X .625 SPIRAL SPRING PIN | 1.000 EA |
| 09EP1708A56P | FACE MTD. EP, MACH X-PROOF GP.E W/EPOXY | 1.000 EA |
| HW1001A38 | LOCKWASHER 3/8, ZINC PLT .688 OD, .382 I | 4.000 EA |
| 10XN3816K28 | 3/8-16 X 1.75 HEX HD CAP SCREW, GRADE 5 | 4.000 EA |
| HA2009A38 | SLINGER FOR GROUP E MTRS - 309 BRG. | 1.000 EA |
| 80XN0632A10 | SET SCREW,#6-32 X .62 LG.HEX SOC. HD. | 2.000 EA |
| 10XN2520K36 | 1/4-20 X 2.25" HX HD SCRWGRADE 5, ZINC P | 4.000 EA |
| HA4051A00 | PLASTIC CAP FOR GREASE FITTING | 1.000 EA |
| HW4500A03 | GREASE FITTING, .125 NPT 1610(ALEMITE) 8 | 1.000 EA |
| HW4500A20 | 1/8NPT SL PIPE PLUG | 1.000 EA |
| HW4505A02 | BREATHER/DRAIN-EXP PROOF-.250-18 PTF AIS | 1.000 EA |
| HW3023E06 | .125 X .625 SPIRAL SPRING PIN | 1.000 EA |
| 09CB1003A01P | KOBX, MACH 1.25 NPT GROUP C MTRS PRIMED | 1.000 EA |
| 10XN3118K24 | 5/16-18 X 1.50" HEX HD, GRADE 5 | 4.000 EA |
| HW1001A31 | LOCKWASHER 5/16, ZINC PLT.591 OD, .319 I | 4.000 EA |
| WD1000B25 | GND LUG, BURNDY L125HP OR T&B L125HP-BB | 1.000 EA |
| 10XN3118K12 | 5/16-18 X .75 GRADE 5, ZINC PLATED | 1.000 EA |
| HW1001A31 | LOCKWASHER 5/16, ZINC PLT.591 OD, .319 I | 1.000 EA |

Product Information Packet: CCPX251546T - 15HP,1765//1470RPM,3PH,60HZ,254TC,XPFC,F

| | | |
|--------------|---|----------|
| 09CB1502A01P | CONDUIT BOX LID MACH. GROUP C MTRS W/EP | 1.000 EA |
| 84XN5013J24 | 1/2-13 X 1-1/2 HEX SOCKET HD CAP SCREW | 6.000 EA |
| HW1001A50 | LOCKWASHER 1/2, ZINC PLT, .879 OD, .509 I | 6.000 EA |
| MG1025G29 | WILKOFEST, 789.229, DARK CHARCOAL GRAY | 0.070 GA |
| 40PA1005 | PACKAGING GROUP, 09 STD | 1.000 EA |
| HW2501G25 | KEY, 3/8 SQ X 2.875 | 1.000 EA |
| MJ5000A09 | EFI KIT #1578 (400 ML CARTRIDGE OF EFI | 0.031 EA |

AC Induction Motor Performance Data

Record # 51149

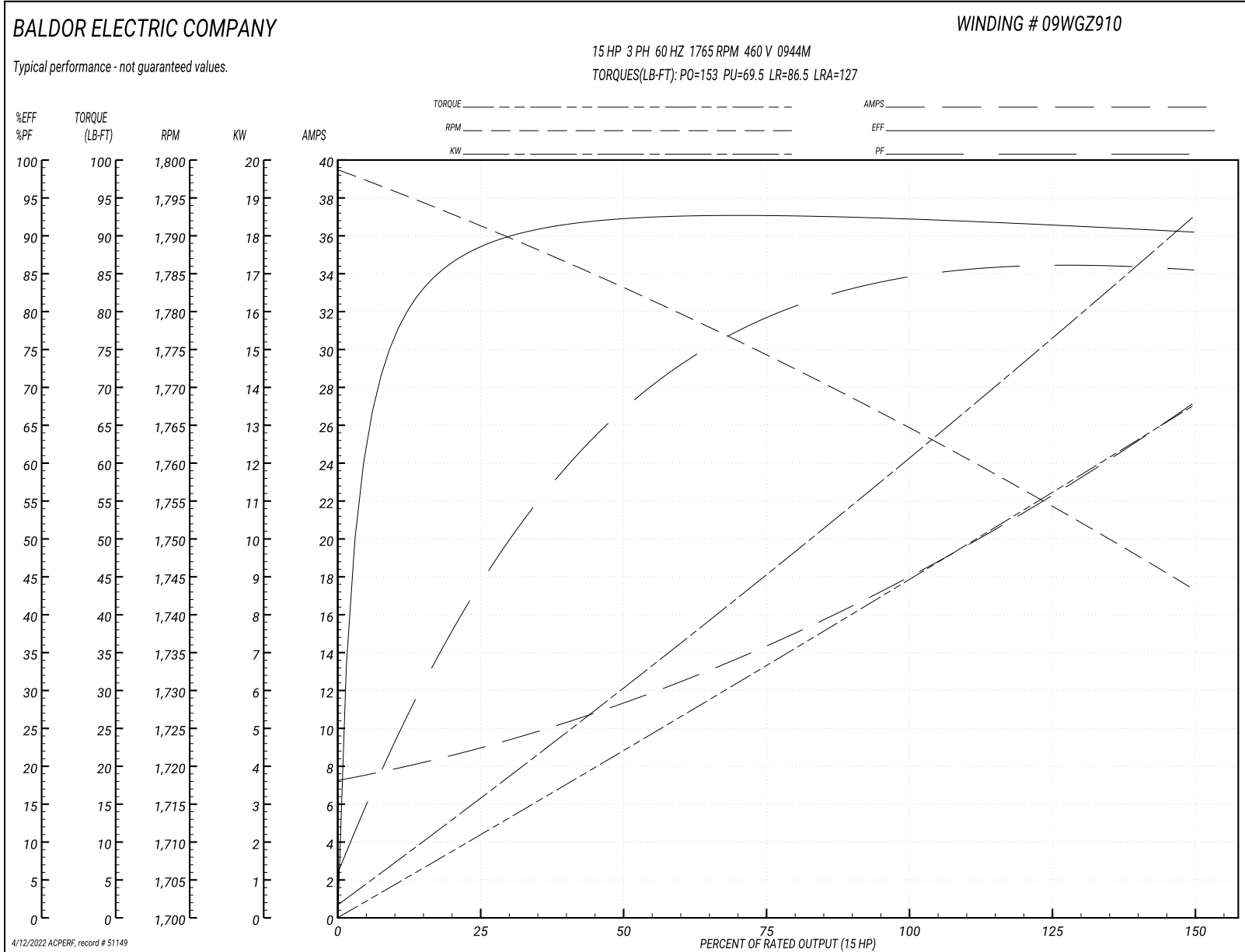
Typical performance - not guaranteed values

| Winding: 09WGZ910-R044 | | Type: 0944M | | Enclosure: XPFC | |
|-------------------------------|-----------------|----------------------------|--|------------------------------|-----------|
| Nameplate Data | | | 460 V, 60 Hz: High Voltage Connection | | |
| Rated Output (HP) | 15 | Full Load Torque | 44.5 LB-FT | | |
| Volts | 230/460 | Start Configuration | direct on line | | |
| Full Load Amps | 36.2/18.1 | Breakdown Torque | 153 LB-FT | | |
| R.P.M. | 1765 | Pull-up Torque | 69.5 LB-FT | | |
| Hz | 60 Phase | 3 | Locked-rotor Torque | 86.5 LB-FT | |
| NEMA Design Code | A | KVA Code | H | Starting Current | 127 A |
| Service Factor (S.F.) | 1 | | No-load Current | 7.56 A | |
| NEMA Nom. Eff. | 92.4 | Power Factor | 83 | Line-line Res. @ 25°C | 0.59555 Ω |
| Rating - Duty | 40C AMB-CONT | | Temp. Rise @ Rated Load | 54°C | |
| | | | Locked-rotor Power Factor | 33 | |
| | | | Rotor inertia | 1.92 LB-FT ² | |

Load Characteristics 460 V, 60 Hz, 15 HP

| % of Rated Load | 25 | 50 | 75 | 100 | 125 | 150 |
|------------------------|-----------|-----------|-----------|------------|------------|------------|
| Power Factor | 45 | 69 | 79 | 83 | 85 | 87 |
| Efficiency | 88.2 | 92.2 | 92.7 | 92.4 | 91.5 | 90.4 |
| Speed | 1791.3 | 1783.1 | 1774 | 1765.2 | 1754.6 | 1743.1 |
| Line amperes | 8.62 | 11 | 14.5 | 18.1 | 22.6 | 26.9 |

Performance Graph at 460V, 60Hz, 15.0HP Typical performance - Not guaranteed values



AC Induction Motor Performance Data

Record # 75708

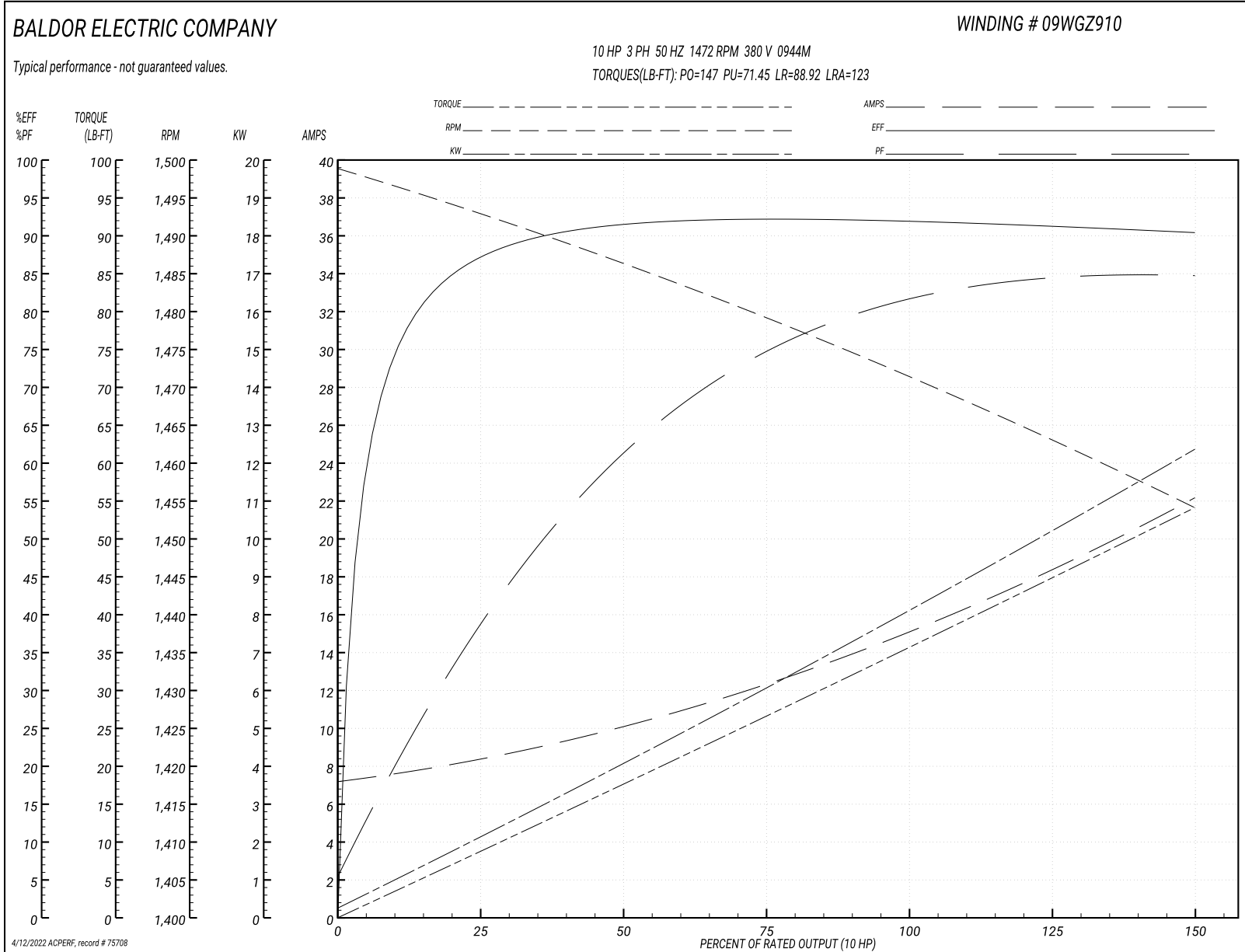
Typical performance - not guaranteed values

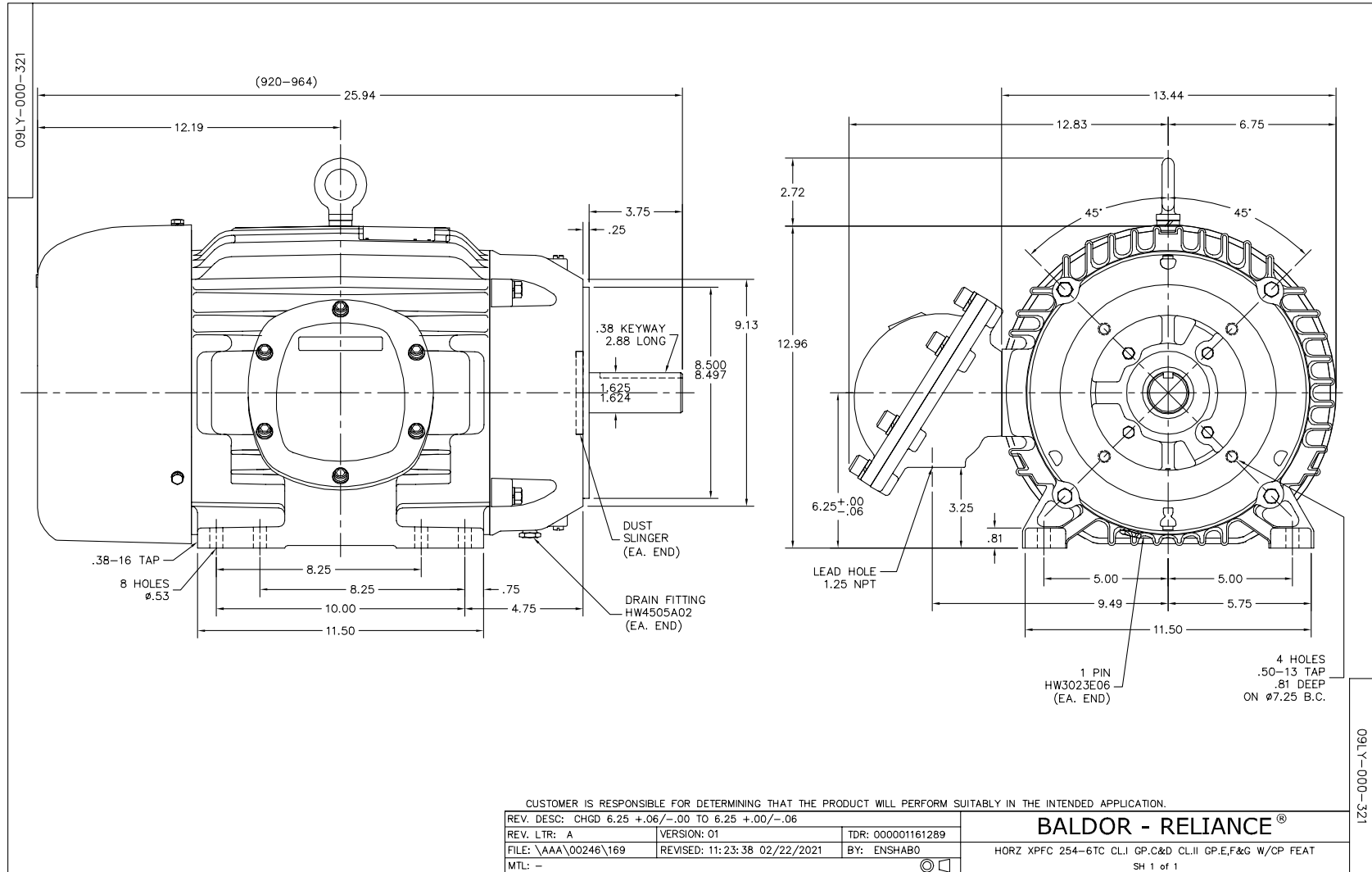
| Winding: 09WGZ910-R063 | | Type: 0944M | | Enclosure: XPFC | |
|-------------------------------|----------------------|---------------------|--|------------------------------|-------------|
| Nameplate Data | | | 380 V, 50 Hz: High Voltage Connection | | |
| Rated Output (HP) | 15//10 | | Full Load Torque | 35.63 LB-FT | |
| Volts | 230/460//190/380 | | Start Configuration | direct on line | |
| Full Load Amps | 36.2/18.1//30.4/15.2 | | Breakdown Torque | 147 LB-FT | |
| R.P.M. | 1765//1470 | | Pull-up Torque | 71.45 LB-FT | |
| Hz | 60//50 | Phase | 3 | Locked-rotor Torque | 88.92 LB-FT |
| NEMA Design Code | A | KVA Code | H | Starting Current | 123 A |
| Service Factor (S.F.) | 1 | | No-load Current | 7.42 A | |
| NEMA Nom. Eff. | 92.4 | Power Factor | 83 | Line-line Res. @ 25°C | 0.553 Ω |
| Rating - Duty | 40C AMB-CONT | | Temp. Rise @ Rated Load | 41°C | |
| S.F. Amps | | | Temp. Rise @ S.F. Load | 51°C | |
| | | | Locked-rotor Power Factor | 36.5 | |
| | | | Rotor inertia | 1.92 LB-FT ² | |

Load Characteristics 380 V, 50 Hz, 10 HP

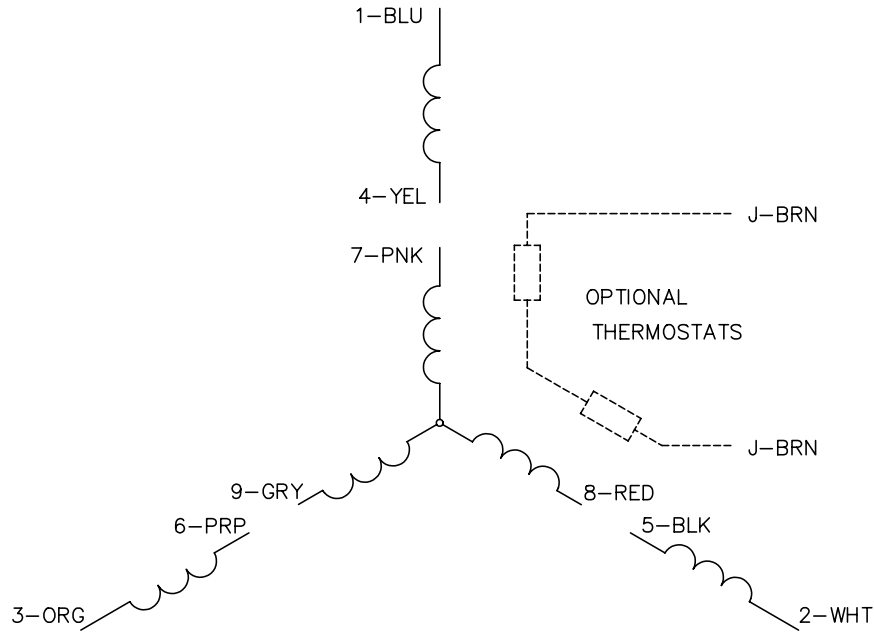
| % of Rated Load | 25 | 50 | 75 | 100 | 125 | 150 |
|------------------------|-----------|-----------|-----------|------------|------------|------------|
| Power Factor | 40 | 63 | 74 | 81 | 83 | 86 |
| Efficiency | 86.7 | 91.4 | 92.1 | 92 | 91.2 | 90.3 |
| Speed | 1493 | 1486 | 1479 | 1472 | 1463 | 1454 |
| Line amperes | 8.14 | 9.82 | 12.46 | 15.18 | 18.67 | 21.93 |

Performance Graph at 380V, 50Hz, 10.0HP Typical performance - Not guaranteed values

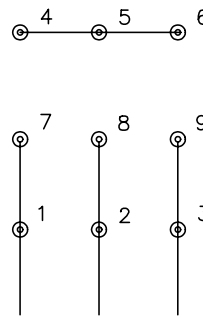




CD0005

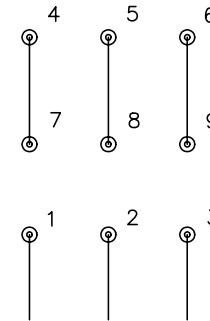


LOW VOLTAGE
(2Y)



LINE

HIGH VOLTAGE
(1Y)



LINE

NOTES:

1. INTERCHANGE ANY TWO LINE LEADS TO REVERSE ROTATION.
2. OPTIONAL THERMOSTATS ARE PROVIDED WHEN SPECIFIED.
3. ACTUAL NUMBER OF INTERNAL PARALLEL CIRCUITS MAY BE A MULTIPLE OF THOSE SHOWN ABOVE.
4. LEAD COLORS ARE OPTIONAL. LEADS MUST ALWAYS BE NUMBERED AS SHOWN.

| | | | |
|---|---------|-------------------------|--------------|
| REV. DESC: REVISE TO SHOW OPTIONAL COLORS | | | |
| REV. LTR: E | BY: JLP | REVISED: 01/19/99 10:15 | TDR: 0171435 |
| 900000 | | FILE: AAA00005140 | MDL: - |
| | | MTL: - | |

BALDOR ELECTRIC Co.

3PH, DV, 9 LEADS

CD0005

Marketing maintained PDF of MN416:

<http://www.baldor.com/support/Literature/Load.ashx/MN416?ManNumber=MN416>