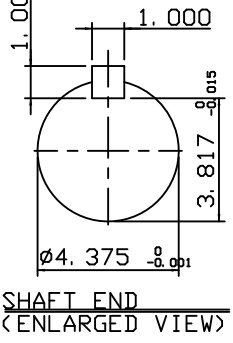
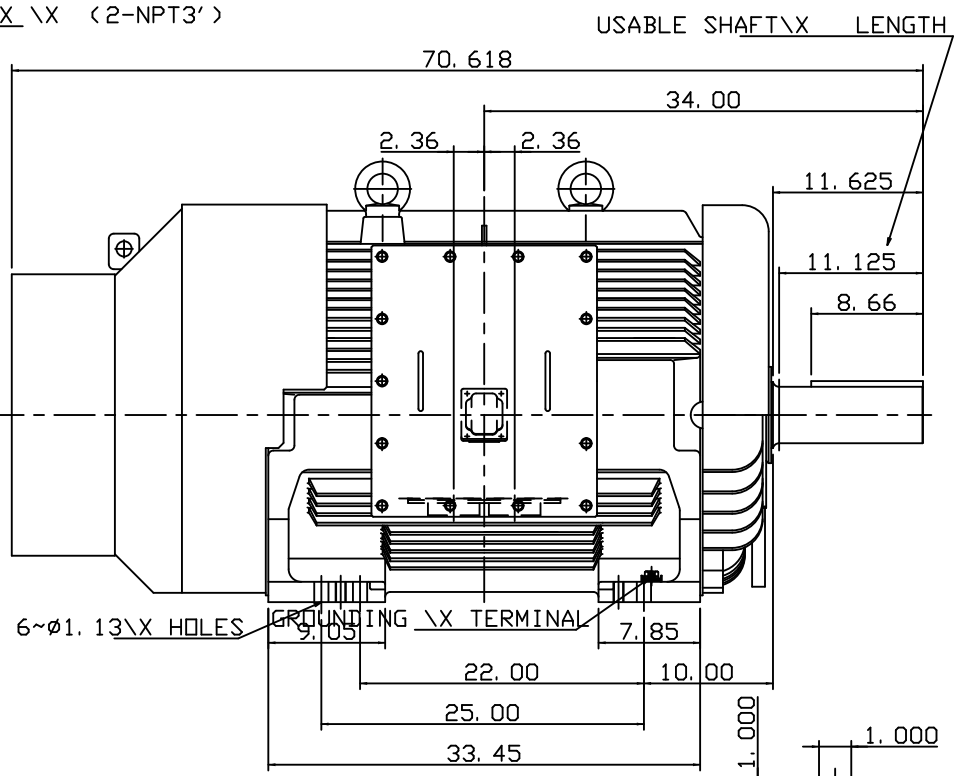
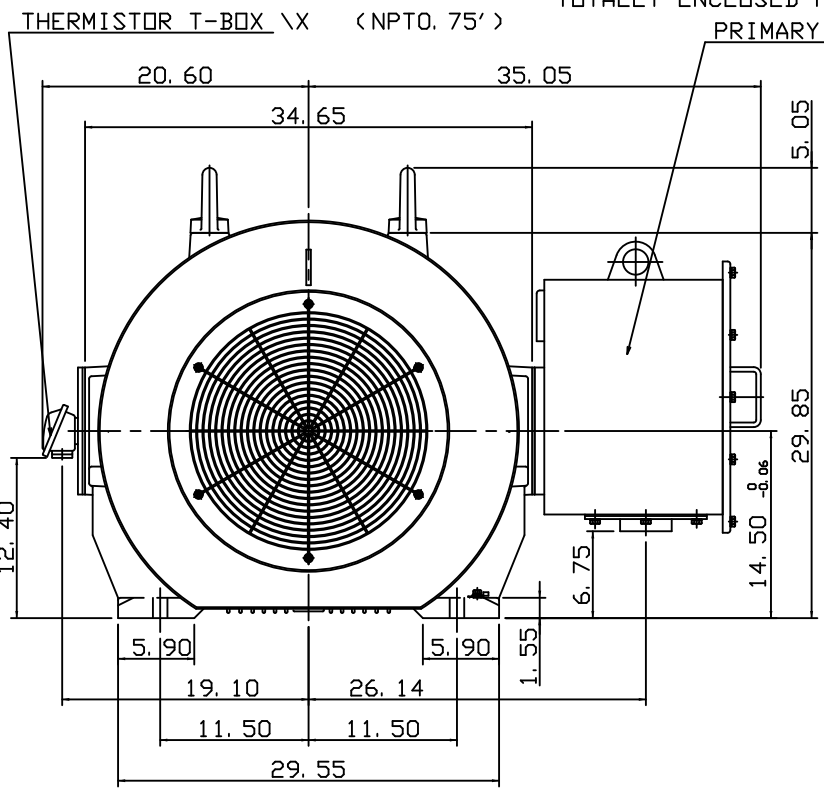


TYPE	OUTPUT		POLE	TIME RATING	VOLTAGE V	Hz	SYN. SPEED R. P. M
	HP.	kW.					
AEHH-GD	250	187	8	CONT.	460	60	900

TOTALLY ENCLOSED FAN-COOLED TYPE, SQUIRREL-CAGE ROTOR



- NOTE:
1. DIMENSIONS IN inch
 2. FRAME NO. 586/7UZ
 3. F CLASS INSULATION, S. F. 1.15
 4. FOR BELT DRIVE
 5. ENCLOSURE: IP55
 6. BEARING SIZE: DRIVE-END N U326C3
OPP. DRIVE-END 6322
 7. NON-SPARKING FAN
 8. WITH THERMISTOR: PTC 140°C 3PCS
 9. MOTOR APPROX. WEIGHT: 4610lb

DATE
April 30, 2018
CATALOG NO.
CDP2508RZ

OUTLINE DIMENSIONS
3-PHASE INDUCTION MOTOR

DWN.	J. WANG	MAR·10·2017
CHKD.	H. HUANG	MAR·10·2017
APPD.	C. LIU	MAR·10·2017

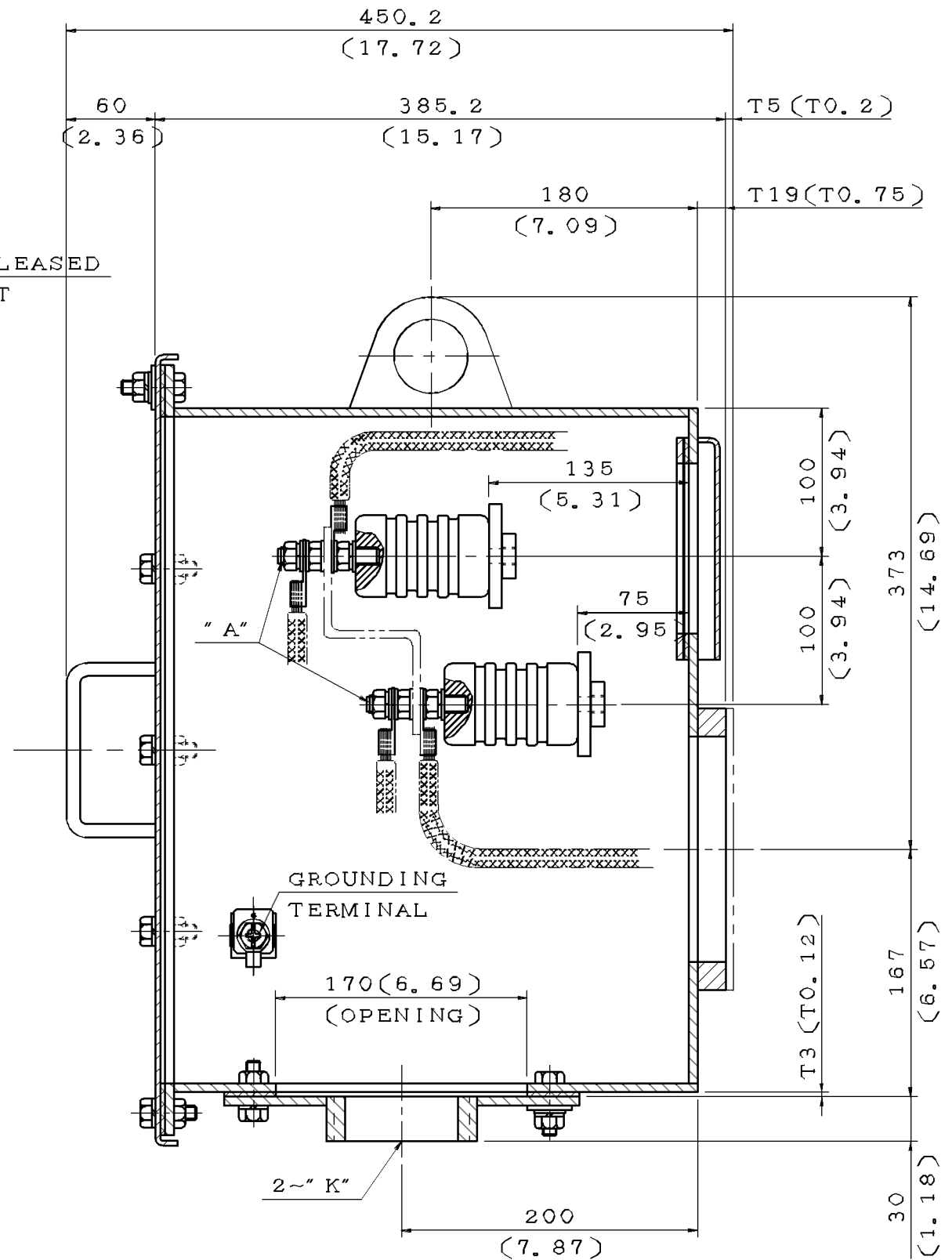
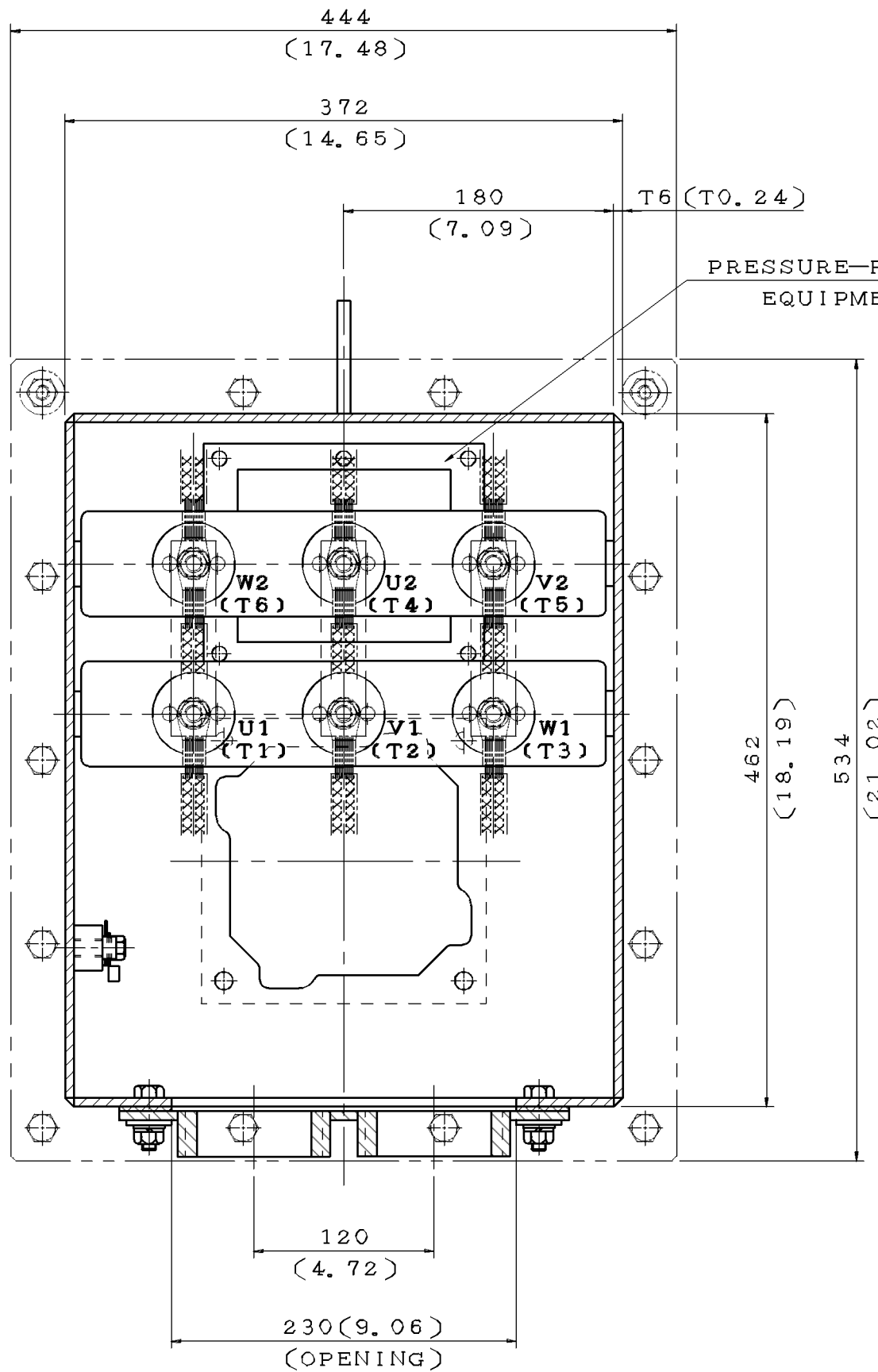


DWG NO. REV: 02
4B040T894 1/1

HP	FULL LOAD RPM	FRAME NO. (EG)	EFFICIENCY				POWER FACTOR			CURRENT			TORQUE		Safe Stall Time(s)		ROTOR WK ² LB-FT ²	Max. Load WK ² LB-FT ²	APPROX. WEIGHT LBS
			FULL LOAD		3/4 LOAD	1/2 LOAD	FULL LOAD	3/4 LOAD	1/2 LOAD	Rated	Starting	Starting	Starting	Max.	HOT SEC	COLD SEC			
			NOM.	MIN.	NOM.	NOM.	%	%	%	A	%	A	%	%					
200	892	5007C	94.5	93.6	94.5	93.5	78.0	73.7	62.5	254	789	2004	200	250	13	18	211	8105	3340
	893	586/7UZ	94.5	93.6	94.5	93.2	78.3	72.4	59.7	253	800	2025	200	250	19	25	300	8105	4530
250	893	5009C	95.0	94.1	95.0	94.1	78.3	74.7	68.0	315	800	2517	200	250	14	18	249	9961	3690
	890	586/7UZ	95.0	94.1	95.0	93.8	76.5	72.5	59.2	322	800	2577	200	250	18	24	342	9961	4680

- NOTE :
1. THE ABOVE ARE TYPICAL VALUES BASED ON TEST
 2. TEST METHOD :
 - A. ANSI/IEEE STANDARD 112 METHOD B AND FULL VOLTAGE STARTING FOR MOTORS NOT OVER 300HP
 - B. ANSI/IEEE STANDARD 112 METHOD E1 AND FULL VOLTAGE STARTING FOR THE OTHERS
 3. DATA SUBJECT TO CHANGE WITHOUT NOTICE
 4. THE VOLTAGE AND FREQUENCY COMBINATIONS NOT INCLUDED IN PERFORMANCE DATA ARE QUOTED CASE BY CASE.

ITEM	A	K
01	M10	NPT2"
02	M16	NPT2"
03	M10	NPT2.5"
04	M16	NPT2.5"
05	M10	NPT3"
06	M16	NPT3"
07	M10	NPT3.5"
08	M16	NPT3.5"
09	M10	NPT4"
10	M16	NPT4"
11	M10	PF5"
12	M16	PF5"



PRESSURE-RELEASED EQUIPMENT

GROUNDING TERMINAL

NOTE:
 1. DIMENSIONS IN mm(inch)
 2. PRIMARY T-BOX

DATE 08/29/2017

SCHEMATIC DRAWING

TERMINAL BOX

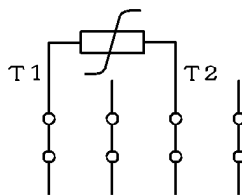
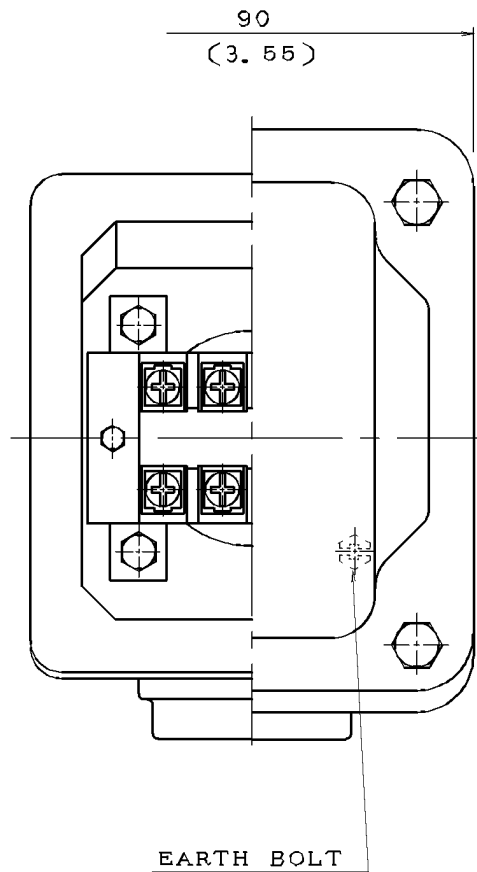
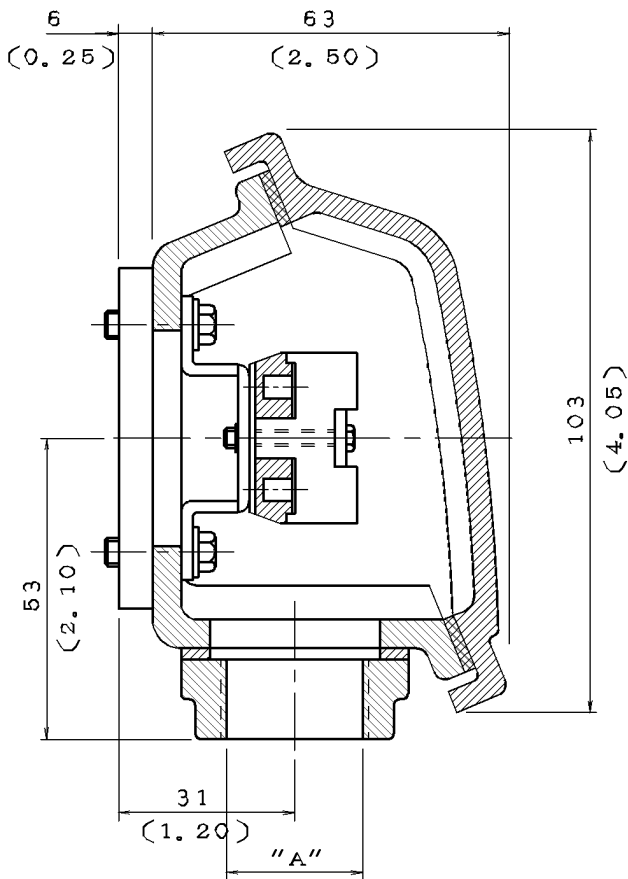
DWN.	J. WANG	JUL.28.2017
CHKD.	H. HUANG	JUL.28.2017
APPD.	C. LIU	JUL.28.2017

TECO® Westinghouse

DWG NO. REV:00

4B040W403

DATE	SCHEMATIC DRAWING TERMINAL BOX	MODEL
08/29/2017		



NOTE: 1. DIMENSIONS IN mm (inch)
 2. TW-06
 3. THERMISTOR T-BOX

ITEM	A
01	M20X1.5
02	M25X1.5
03	PF0.5"
04	PF0.75"
05	PF1"
06	PT0.5"
07	PT0.75"
08	NPT0.5"
09	NPT0.75"
10	NPT1"



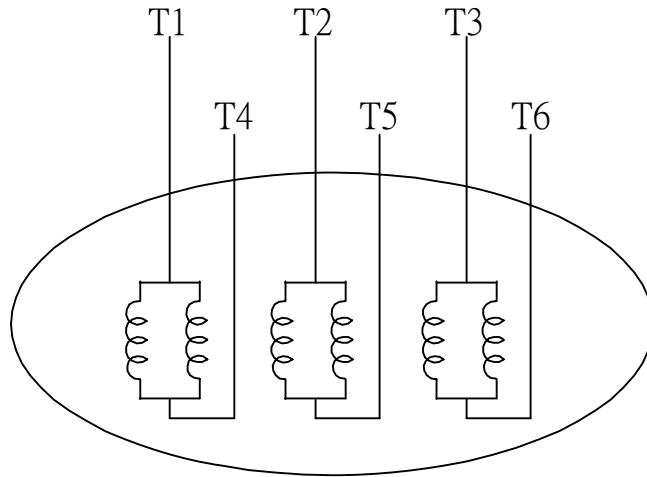
DWN.	L. NIEH	MAY*21*2002
CHKD.	B. YANG	MAY*21*2002
APPD.	T. CHEN	MAY*21*2002

TECO **Westinghouse**

DWG NO. REV: 04

3A040M465

DATE	SCHEMATIC 6 LEADS	MODEL
08/29/2017		



SCHEMATIC DIAGRAM - 6 LEADS

VOLTAGE	CONNECTION	ROTATION (VIEWED FROM NON-DRIVE END)
LOW (RUN. Δ)		
HIGH (START. Δ)		

DWN.	S.HUANG	MAR • 03 • 2003		DWG NO.	REV: 00
CHKD.	T.HSIAO	MAR • 03 • 2003		3A061H634W	
APPD.	T.HSIAO	MAR • 03 • 2003			