

BALDOR® • RELIANCE 

Product Information Packet

CDRX050744

0.75HP, 1750//1460RPM, 3PH, 60/50HZ, 56C, XPF

Part Detail							
Revision:	B	Status:	PRD/A	Change #:		Proprietary:	No
Type:	AC	Elec. Spec:	35WGP672	CD Diagram:	CD0005	Mfg Plant:	
Mech. Spec:		Layout:	35LYX738	Poles:	04	Created Date:	08-07-2019
Base:		Eff. Date:	01-31-2022	Leads:	9#18		

Specs			
Catalog Number:	CDRX050744	Duty Rating:	CONT
Enclosure:	XPFC	Electrically Isolated Bearing:	Not Electrically Isolated
Frame:	56C	Feedback Device:	NO FEEDBACK
Frame Material:	Steel	Heater Indicator:	No Heater
Output @ Frequency:	.500 HP @ 50 HZ	Insulation Class:	B
	.750 HP @ 60 HZ	Inverter Code:	Inverter Duty
Synchronous Speed @ Frequency:	1800 RPM @ 60 HZ	IP Rating:	NONE
Voltage @ Frequency:	230.0 V @ 60 HZ	KVA Code:	M
	190.0 V @ 50 HZ	Lifting Lugs:	No Lifting Lugs
	380.0 V @ 50 HZ	Locked Bearing Indicator:	Locked Bearing
	460.0 V @ 60 HZ	Motor Lead Termination:	Flying Leads
XP Class and Group:	CLI GP C,D	Motor Type:	3514M
XP Division:	Division I	Mounting Arrangement:	F1
Agency Approvals:	UR	Power Factor:	66
	UL	Product Family:	General Purpose
	CSA	Pulley Face Code:	C-Face
Auxillary Box:	No Auxillary Box	Rodent Screen:	None
Auxillary Box Lead Termination:	None	RoHS Status:	ROHS NON-COMPLIANT

Base Indicator:	Rigid	Shaft Ground Indicator:	No Shaft Grounding
Bearing Grease Type:	Polyrex EM (-20F +300F)	Shaft Rotation:	Reversible
Blower:	None	Speed Code:	Single Speed
Constant Torque Speed Range:	6	Motor Standards:	NEMA
Current @ Voltage:	2.800 A @ 230.0 V	Starting Method:	Direct on line
	2.600 A @ 190.0 V	Thermal Device - Bearing:	None
	1.400 A @ 460.0 V	Thermal Device - Winding:	Normally Closed Thermostat
	1.300 A @ 380.0 V	Vibration Sensor Indicator:	No Vibration Sensor
Design Code:	B	Winding Thermal 1:	None
Drip Cover:	No Drip Cover	Winding Thermal 2:	None
		XP Temp Code:	T3C

Nameplate NP1401XPSL											
NO.					CC						
S/N					TEMP CODE	T3C					
SPEC.	35-0000-0286				INV.TYPE	PWM					
CAT.NO.	CDRX050744				C HP FR	60	C HP TO	90	CT HZ TO	60	
HP	.75//.5				CT HZ FROM	6	VT HZ FROM	6	CT HZ TO	60	
VOLTS	230/460//190/380				VT HZ FROM	6	VT HZ TO	60			
AMPS	2.8/1.4//2.6/1.3				MAG CUR	2.2/1.1					
RPM	1750//1460				MX RPM	2700					
HZ	60//50	PH	3	CL	F	NOM.EFF.	78.5				
SER.F.	1.15	DES	B	SL HZ	1.7	WK2	0.0827				
FRAME	56C	RATING	40C AMB-CONT								
	55C AMB @ 1.0 SF										
	1.15 SF SINEWAVE					NEMA MG-1 PT 5,IP55					

Parts List		
Part Number	Description	Quantity
SA372863	SA 35-0000-0286	1.000 EA
RA362623	RA 35-0000-0286	1.000 EA
LB1119N	WARNING LABEL	1.000 EA
LC0145B01	CONNECTION LABEL	1.000 EA
NP1401XPSL	SS XP INV UL CSA CC CL-I GP-C&D	1.000 EA
85XU0407S04	4X1/4 U DRIVE PIN STAINLESS	4.000 EA
85XU0407S04	4X1/4 U DRIVE PIN STAINLESS	2.000 EA
MN416A01	TAG-INSTAL-MAINT no wire (2100/bx) 4/22	1.000 EA
LB1359F	ALUM XP CAUTION LABEL	1.000 EA
35FH4005A01SP	IEC FH NO GREASER W/PRIMED	1.000 EA
51XW1032A06	10-32 X .38, TAPTITE II, HEX WSHR SLTD S	3.000 EA
35FN3002A05SP	EXFN, PLASTIC, 6.376 OD, .638 ID	1.000 EA
51XB1214A16	12-14X1.00 HXWSSLD SERTYB	1.000 EA
MJ1000A02	GREASE, MOBIL POLYREX EM - 124047	0.050 LB
HA3104A06	THRUBOLT 5/16-18 X 8.50 OHIO ROD	4.000 EA
XY3118A12	5/16-18 HEX NUT DIRECTIONAL SERRATION	4.000 EA
35EP3700B07	FR ENDPLATE, XPFC - GROUP C, W/ DRAIN	1.000 EA
HW5100A03	WAVY WASHER (W1543-017)	1.000 EA
HW4506A02	BREATHER/DRAIN-EXP PROOF-.125-27 NPTF AI	1.000 EA
HW3022E05	.125 DIA X .500 ROLLED SPRING PIN	1.000 EA
35EP1704A39	PUEP 205 BRG XP GRP C W/SLINGER, DRAIN	1.000 EA
HA2071A02	SLINGER ALUM (AUTO)	1.000 EA
80XN1032A04	10-32 X 1/4 SET SCREW	1.000 EA
84XN1032J20	SCREW, SOC 10-32 X 1 1/4"BMH4602	2.000 EA

Parts List (continued)		
Part Number	Description	Quantity
HW4001A01	1/4 HX SOC PIPE PLG (F/S) ALLOY STEEL W/	2.000 EA
60XN1032A07	10-32 X .4375 TRUSS HEAD, TORX SERRATED	2.000 EA
HW4506A02	BREATHER/DRAIN-EXP PROOF-.125-27 NPTF AI	1.000 EA
HW3022E05	.125 DIA X .500 ROLLED SPRING PIN	1.000 EA
35CB1005A01	CONDUIT BOX,MACH - GROUP "C" MTRS	1.000 EA
RM1020A41	O-RING, -150 BUNA-N, .103 CS X 2.862 ID	1.000 EA
11XW1032G06	10-32 X .38, TAPTITE II, HEX WSHR SLTD U	1.000 EA
HW3001B01	BRASS CUP WASHER, FOR #10 SCREW	1.000 EA
35CB1501A01	CONDUIT BOX LID, MACH. - GROUP "C" MTRS	1.000 EA
MG1500Y02	WILKOPON PRIMER YELLOW	0.022 GA
MG1025G29	WILKOFASST, 789.229, DARK CHARCOAL GRAY	0.022 GA
36PA1000	PKG GRP, PRINT PK1016A06	1.000 EA
HW2501D13	KEY, 3/16 SQ X 1.375	1.000 EA
HA7000A04	KEY RETAINER 0.625 DIA SHAFTS	1.000 EA

AC Induction Motor Performance Data

Record # 77888

Typical performance - not guaranteed values

Winding: 35WGP672-R045			Type: 3514M	Enclosure: XPFC		
Nameplate Data			380 V, 50 Hz: High Voltage Connection			
Rated Output (HP)	.75		Full Load Torque	1.81 LB-FT		
Volts	230/460//190/380		Start Configuration	direct on line		
Full Load Amps	2.8/1.4//2.6/1.3		Breakdown Torque	10.25 LB-FT		
R.P.M.	1750//1460		Pull-up Torque	6.64 LB-FT		
Hz	60//50	Phase	3	Locked-rotor Torque	7.39 LB-FT	
NEMA Design Code	B		KVA Code	M	Starting Current	9.51 A
Service Factor (S.F.)	1.15		No-load Current	1.05 A		
NEMA Nom. Eff.	78.5	Power Factor	66	Line-line Res. @ 25°C	20.4 Ω	
Rating - Duty	40C AMB-CONT		Temp. Rise @ Rated Load	33°C		
S.F. Amps			Temp. Rise @ S.F. Load	36°C		
			Locked-rotor Power Factor	74.1		
			Rotor inertia	0.0827 LB-FT ²		

Load Characteristics 380 V, 50 Hz, 0.5 HP

% of Rated Load	25	50	75	100	125	150	S.F.
Power Factor	26	40	51	60	69	74	65
Efficiency	51.1	66	72.4	75.6	76.2	76.4	76
Speed	1491	1481	1472	1459	1447	1436	1452
Line amperes	1.05	1.09	1.14	1.25	1.36	1.49	1.32

Performance Graph at 380V, 50Hz, 0.5HP Typical performance - Not guaranteed values

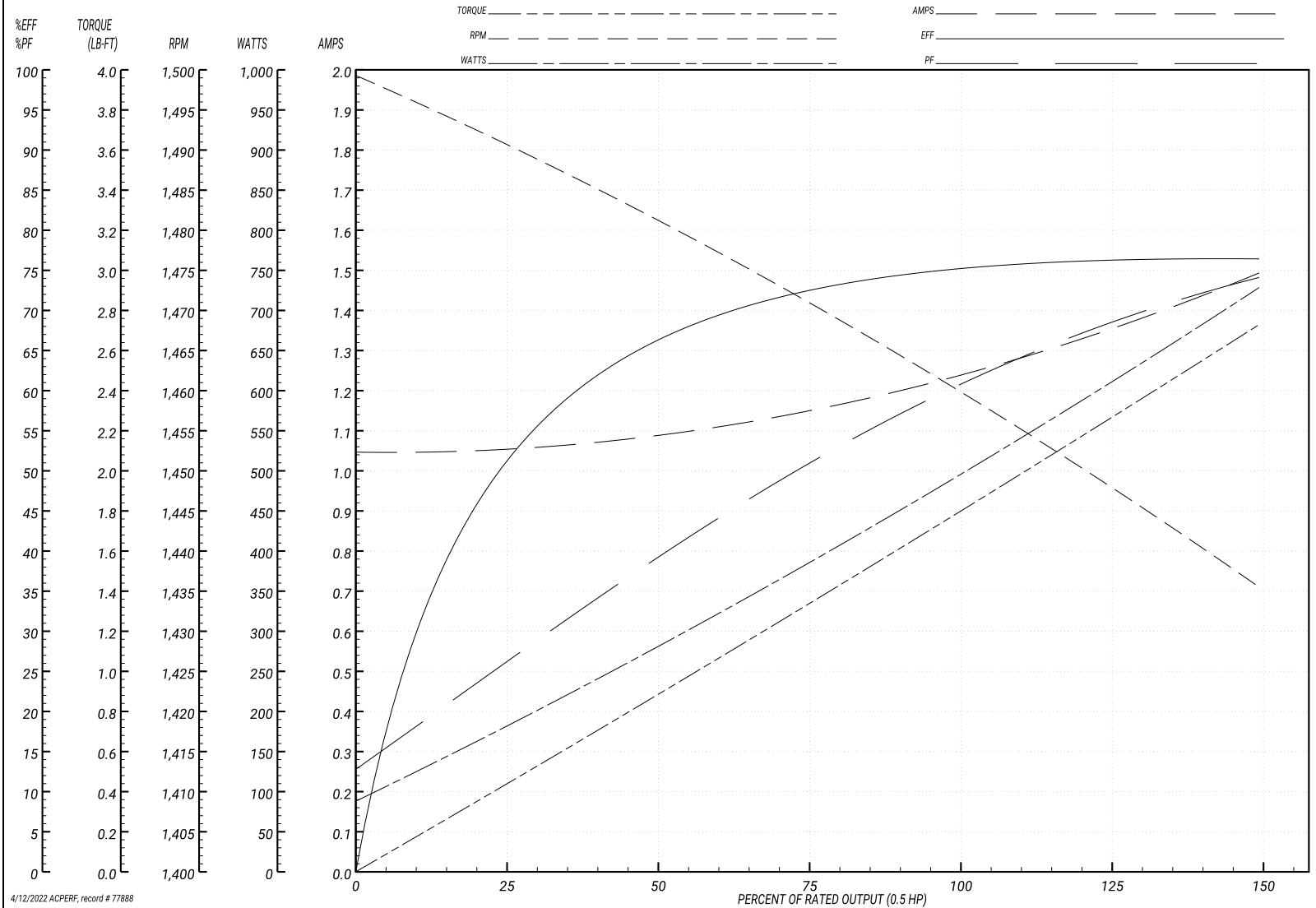
BALDOR ELECTRIC COMPANY

WINDING # 35WGP672

Typical performance - not guaranteed values.

0.5 HP 3 PH 50 HZ 1459 RPM 380 V 3514M

TORQUES(LB-FT): PO=10.25 PU=6.64 LR=7.39 LRA=9.51



4/12/2022 ACPERF_record # 77888

AC Induction Motor Performance Data

Record # 77889

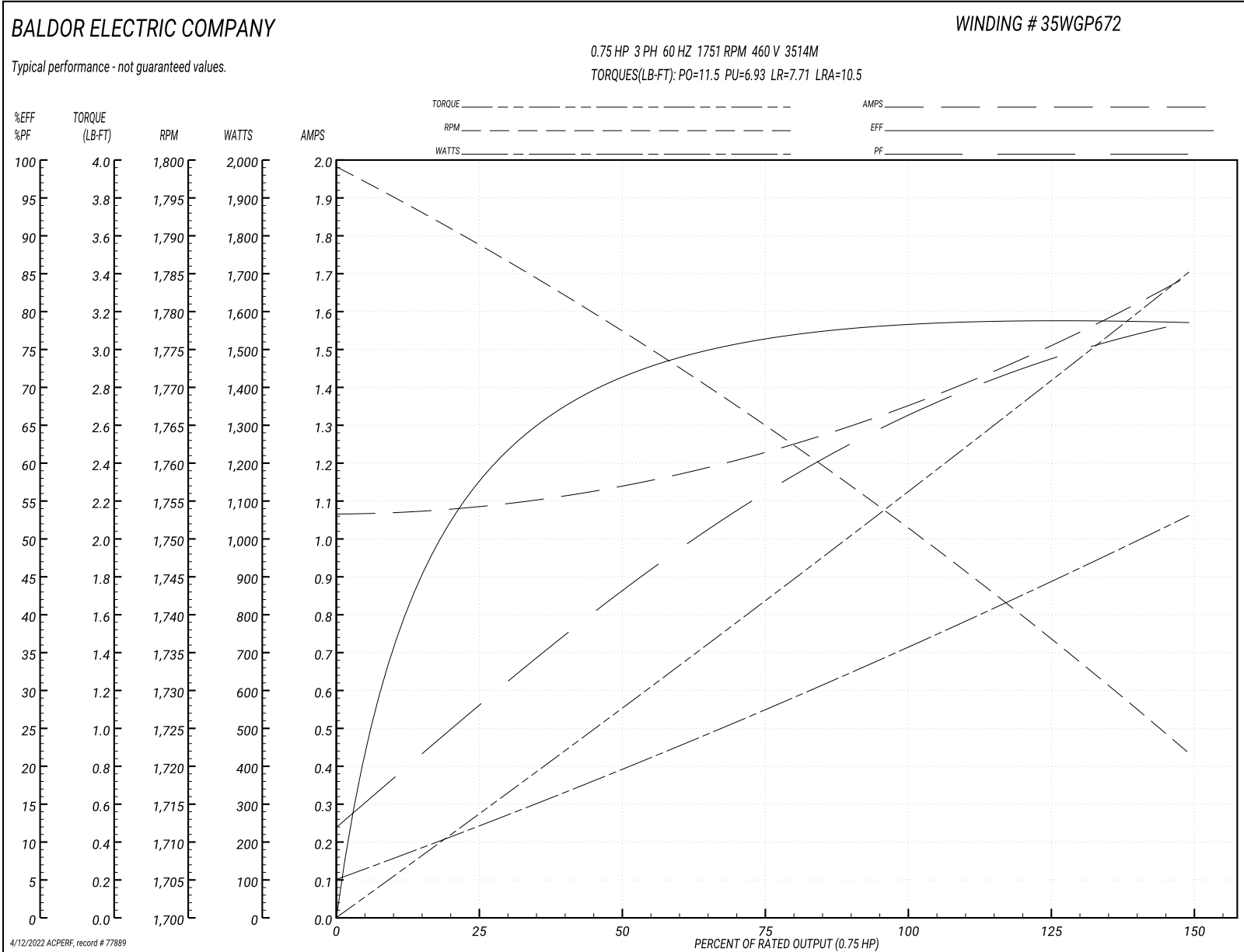
Typical performance - not guaranteed values

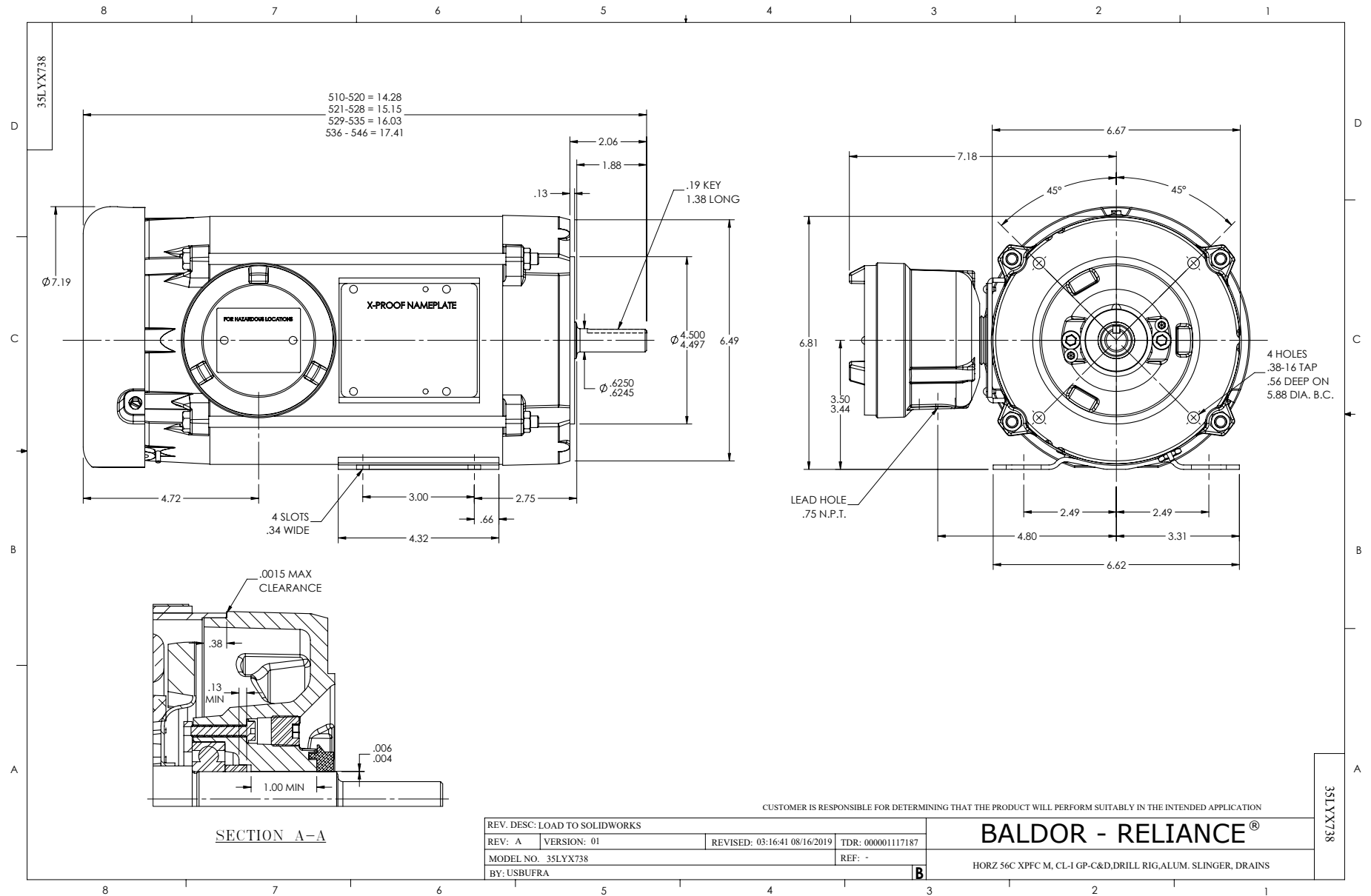
Winding: 35WGP672-R045		Type: 3514M		Enclosure: XPFC		
Nameplate Data			460 V, 60 Hz: High Voltage Connection			
Rated Output (HP)	.75	Full Load Torque		2.26 LB-FT		
Volts	230/460//190/380	Start Configuration		direct on line		
Full Load Amps	2.8/1.4//2.6/1.3	Breakdown Torque		11.5 LB-FT		
R.P.M.	1750//1460	Pull-up Torque		6.93 LB-FT		
Hz	60//50 Phase	3	Locked-rotor Torque		7.71 LB-FT	
NEMA Design Code	B KVA Code	M	Starting Current		10.5 A	
Service Factor (S.F.)	1.15	No-load Current		1.07 A		
NEMA Nom. Eff.	78.5	Power Factor	66	Line-line Res. @ 25°C		20.4 Ω
Rating - Duty	40C AMB-CONT	Temp. Rise @ Rated Load		39°C		
S.F. Amps		Temp. Rise @ S.F. Load		43°C		
		Locked-rotor Power Factor		68.2		
		Rotor inertia		0.0827 LB-FT ²		

Load Characteristics 460 V, 60 Hz, 0.75 HP

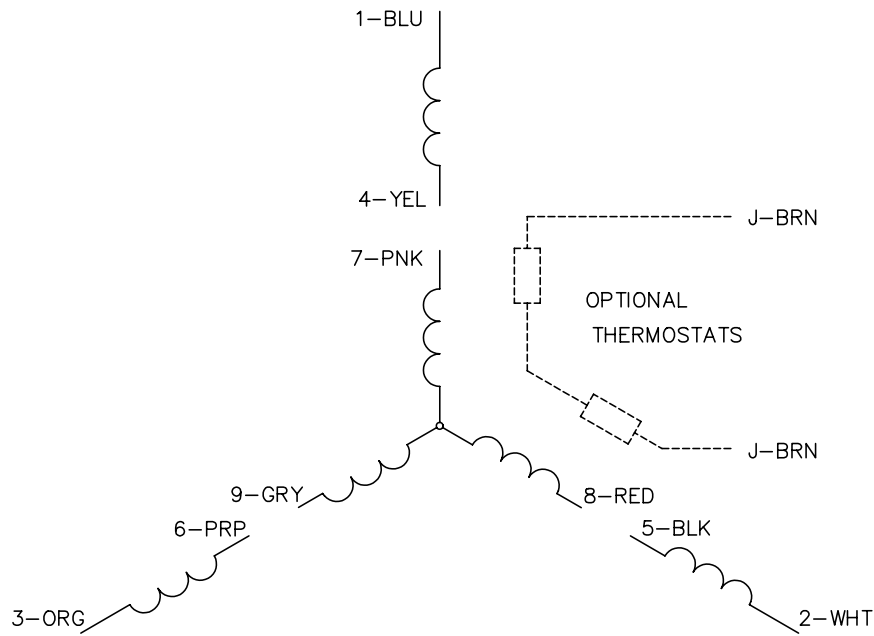
% of Rated Load	25	50	75	100	125	150	S.F.
Power Factor	28	44	56	66	74	79	71
Efficiency	57.4	71	76.2	78.7	78.8	78.4	78.8
Speed	1789	1777	1766	1751	1736	1722	1742
Line amperes	1.08	1.14	1.22	1.36	1.52	1.69	1.46

Performance Graph at 460V, 60Hz, 0.75HP Typical performance - Not guaranteed values

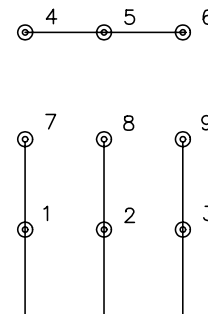




CD0005

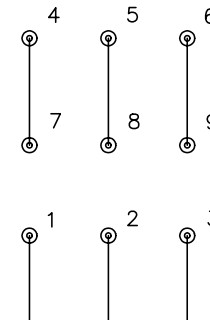


LOW VOLTAGE
(2Y)



LINE

HIGH VOLTAGE
(1Y)



LINE

NOTES:

1. INTERCHANGE ANY TWO LINE LEADS TO REVERSE ROTATION.
2. OPTIONAL THERMOSTATS ARE PROVIDED WHEN SPECIFIED.
3. ACTUAL NUMBER OF INTERNAL PARALLEL CIRCUITS MAY BE A MULTIPLE OF THOSE SHOWN ABOVE.
4. LEAD COLORS ARE OPTIONAL. LEADS MUST ALWAYS BE NUMBERED AS SHOWN.

REV. DESC: REVISE TO SHOW OPTIONAL COLORS			
REV. LTR: E	BY: JLP	REVISED: 01/19/99 10:15	TDR: 0171435
900000		FILE: AAA00005140	MDL: -
		MTL: -	

BALDOR ELECTRIC Co.

3PH, DV, 9 LEADS

CD0005

Marketing maintained PDF of MN416:

<http://www.baldor.com/support/Literature/Load.ashx/MN416?ManNumber=MN416>