

**BALDOR® • RELIANCE** 

**Product Information Packet**

**CDRX14164T**

**1HP, 1155//960RPM, 3PH, 60HZ, 145TC, XPFC, F1**

| Part Detail |    |             |            |             |        |               |            |
|-------------|----|-------------|------------|-------------|--------|---------------|------------|
| Revision:   | -  | Status:     | PRD/A      | Change #:   |        | Proprietary:  | No         |
| Type:       | AC | Elec. Spec: | 35WGM497   | CD Diagram: | CD0005 | Mfg Plant:    |            |
| Mech. Spec: |    | Layout:     | 35LYX732   | Poles:      | 06     | Created Date: | 05-23-2019 |
| Base:       |    | Eff. Date:  | 05-28-2019 | Leads:      | 9#18   |               |            |

| Specs                           |                  |                                |                           |
|---------------------------------|------------------|--------------------------------|---------------------------|
| Catalog Number:                 | CDRX14164T       | Duty Rating:                   | CONT                      |
| Enclosure:                      | XPFC             | Electrically Isolated Bearing: | Not Electrically Isolated |
| Frame:                          | 145TC            | Feedback Device:               | NO FEEDBACK               |
| Frame Material:                 | Steel            | Heater Indicator:              | No Heater                 |
| Output @ Frequency:             | .750 HP @ 50 HZ  | Insulation Class:              | F                         |
|                                 | 1.000 HP @ 60 HZ | Inverter Code:                 | Inverter Duty             |
| Synchronous Speed @ Frequency:  | 1200 RPM @ 60 HZ | IP Rating:                     | NONE                      |
| Voltage @ Frequency:            | 230.0 V @ 60 HZ  | KVA Code:                      | K                         |
|                                 | 190.0 V @ 50 HZ  | Lifting Lugs:                  | No Lifting Lugs           |
|                                 | 380.0 V @ 50 HZ  | Locked Bearing Indicator:      | Locked Bearing            |
|                                 | 460.0 V @ 60 HZ  | Motor Lead Termination:        | Flying Leads              |
| XP Class and Group:             | CLI GP C,D       | Motor Type:                    | 3526M                     |
| XP Division:                    | Division I       | Mounting Arrangement:          | F1                        |
| Agency Approvals:               | UR               | Power Factor:                  | 64                        |
|                                 | CSA EEV          | Product Family:                | General Purpose           |
|                                 | CSA              | Pulley Face Code:              | C-Face                    |
| Auxillary Box:                  | No Auxillary Box | Rodent Screen:                 | None                      |
| Auxillary Box Lead Termination: | None             | RoHS Status:                   | ROHS NON-COMPLIANT        |

|                                     |                         |                                    |                            |
|-------------------------------------|-------------------------|------------------------------------|----------------------------|
| <b>Base Indicator:</b>              | Rigid                   | <b>Shaft Ground Indicator:</b>     | No Shaft Grounding         |
| <b>Bearing Grease Type:</b>         | Polyrex EM (-20F +300F) | <b>Shaft Rotation:</b>             | Reversible                 |
| <b>Blower:</b>                      | None                    | <b>Speed Code:</b>                 | Single Speed               |
| <b>Constant Torque Speed Range:</b> | 6                       | <b>Motor Standards:</b>            | NEMA                       |
| <b>Current @ Voltage:</b>           | 3.600 A @ 230.0 V       | <b>Starting Method:</b>            | Direct on line             |
|                                     | 3.400 A @ 190.0 V       | <b>Thermal Device - Bearing:</b>   | None                       |
|                                     | 1.800 A @ 460.0 V       | <b>Thermal Device - Winding:</b>   | Normally Closed Thermostat |
|                                     | 1.700 A @ 380.0 V       | <b>Vibration Sensor Indicator:</b> | No Vibration Sensor        |
| <b>Design Code:</b>                 | B                       | <b>Winding Thermal 1:</b>          | None                       |
| <b>Drip Cover:</b>                  | No Drip Cover           | <b>Winding Thermal 2:</b>          | None                       |
|                                     |                         | <b>XP Temp Code:</b>               | T3C                        |

| Nameplate NP1401XPSLEV |                  |  |        |              |  |                     |         |  |          |      |  |
|------------------------|------------------|--|--------|--------------|--|---------------------|---------|--|----------|------|--|
| NO.                    |                  |  |        |              |  | CC                  | 010A    |  |          |      |  |
| S/N                    |                  |  |        |              |  | TEMP CODE           | T3C     |  |          |      |  |
| SPEC.                  | 35-0000-0179     |  |        |              |  | INV. TYPE           | PWM     |  |          |      |  |
| CAT.NO.                | CDRX14164T       |  |        |              |  | C HP FR             | 60      |  | C HP TO  | 90   |  |
| HP                     | 1//.75           |  |        |              |  | CT HZ FROM          | 6       |  | CT HZ TO | 60   |  |
| VOLTS                  | 230/460//190/380 |  |        |              |  | VT HZ FROM          | 6       |  | VT HZ TO | 60   |  |
| AMPS                   | 3.6/1.8//3.4/1.7 |  |        |              |  | MAG CUR             | 2.4/1.2 |  |          |      |  |
| RPM                    | 1155//960        |  |        |              |  | MX RPM              | 1800    |  |          |      |  |
| HZ                     | 60//50           |  | PH     | 3            |  | CL                  | F       |  | NOM.EFF. | 82.5 |  |
| SER.F.                 | 1.00             |  | DES    | B            |  | SL HZ               | 2.2     |  | WK2      | 0.16 |  |
| FRAME                  | 145TC            |  | RATING | 40C AMB-CONT |  |                     |         |  |          |      |  |
|                        | 55C AMB @ 1.0 SF |  |        |              |  |                     |         |  |          |      |  |
|                        | 1.15 SF SINEWAVE |  |        |              |  | NEMA MG-1 PT 5,IP55 |         |  |          |      |  |
|                        |                  |  |        |              |  |                     |         |  |          |      |  |

| Parts List    |  |          |
|---------------|--|----------|
| Part Number   | Description                              | Quantity |
| SA369892      | SA 35-0000-0179                          | 1.000 EA |
| RA359503      | RA 35-0000-0179                          | 1.000 EA |
| LB1119N       | WARNING LABEL                            | 1.000 EA |
| LC0145B01     | CONNECTION LABEL                         | 1.000 EA |
| NP1401XPSLEV  | SS XP INV UL CSA-EEV CC CL-I GP-C&D      | 1.000 EA |
| 85XU0407S04   | 4X1/4 U DRIVE PIN STAINLESS              | 2.000 EA |
| 85XU0407S04   | 4X1/4 U DRIVE PIN STAINLESS              | 4.000 EA |
| MN416A01      | TAG-INSTAL-MAINT no wire (2100/bx) 4/22  | 1.000 EA |
| LB1359F       | ALUM XP CAUTION LABEL                    | 1.000 EA |
| 35FH4005A01SP | IEC FH NO GREASER W/PRIMED               | 1.000 EA |
| 51XW1032A06   | 10-32 X .38, TAPTITE II, HEX WSHR SLTD S | 3.000 EA |
| 35FN3002A05SP | EXFN, PLASTIC, 6.376 OD, .638 ID         | 1.000 EA |
| 51XB1214A16   | 12-14X1.00 HXWSSLD SERTYB                | 1.000 EA |
| MJ1000A02     | GREASE, MOBIL POLYREX EM - 124047        | 0.050 LB |
| HA3104A08     | THRUBOLT-5/16-18X9.375 X X               | 4.000 EA |
| XY3118A12     | 5/16-18 HEX NUT DIRECTIONAL SERRATION    | 4.000 EA |
| 35EP3700B07   | FR ENDPLATE, XPFC - GROUP C, W/ DRAIN    | 1.000 EA |
| HW5100A03     | WAVY WASHER (W1543-017)                  | 1.000 EA |
| HW4506A02     | BREATHER/DRAIN-EXP PROOF-.125-27 NPTF AI | 1.000 EA |
| HW3022E05     | .125 DIA X .500 ROLLED SPRING PIN        | 1.000 EA |
| HA2009A89     | SPACER FOR XP MTRS - 205 BRG.            | 1.000 EA |
| 35EP1704A40   | PUEP 205 BRG XP,GP C,ALUM SLINGER,DRAIN  | 1.000 EA |
| HA2071A02     | SLINGER ALUM (AUTO)                      | 1.000 EA |
| 80XN1032A04   | 10-32 X 1/4 SET SCREW                    | 1.000 EA |

| <b>Parts List (continued)</b> |  |                 |
|-------------------------------|--|-----------------|
| <b>Part Number</b>            | <b>Description</b>                       | <b>Quantity</b> |
| 84XN1032J20                   | SCREW, SOC 10-32 X 1 1/4"BMH4602         | 2.000 EA        |
| HW4001A01                     | 1/4 HX SOC PIPE PLG (F/S) ALLOY STEEL W/ | 2.000 EA        |
| 60XN1032A07                   | 10-32 X .4375 TRUSS HEAD, TORX SERRATED  | 2.000 EA        |
| HW4506A02                     | BREATHER/DRAIN-EXP PROOF-.125-27 NPTF AI | 1.000 EA        |
| HW3022E05                     | .125 DIA X .500 ROLLED SPRING PIN        | 1.000 EA        |
| 35CB1005A01                   | CONDUIT BOX,MACH - GROUP "C" MTRS        | 1.000 EA        |
| RM1020A41                     | O-RING, -150 BUNA-N, .103 CS X 2.862 ID  | 1.000 EA        |
| 11XW1032G06                   | 10-32 X .38, TAPTITE II, HEX WSHR SLTD U | 1.000 EA        |
| HW3001B01                     | BRASS CUP WASHER, FOR #10 SCREW          | 1.000 EA        |
| 35CB1501A01                   | CONDUIT BOX LID, MACH. - GROUP "C" MTRS  | 1.000 EA        |
| MG1500Y02                     | WILKOPON PRIMER YELLOW                   | 0.022 GA        |
| MG1025G29                     | WILKOFASST, 789.229, DARK CHARCOAL GRAY  | 0.022 GA        |
| 36PA1001                      | PKG GRP, PRINT PK1017A06                 | 1.000 EA        |
| HW2501D13                     | KEY, 3/16 SQ X 1.375                     | 1.000 EA        |
| HA7000A01                     | KEY RETAINER 7/8" DIA SHAFT              | 1.000 EA        |

**AC Induction Motor Performance Data**

Record # 73789

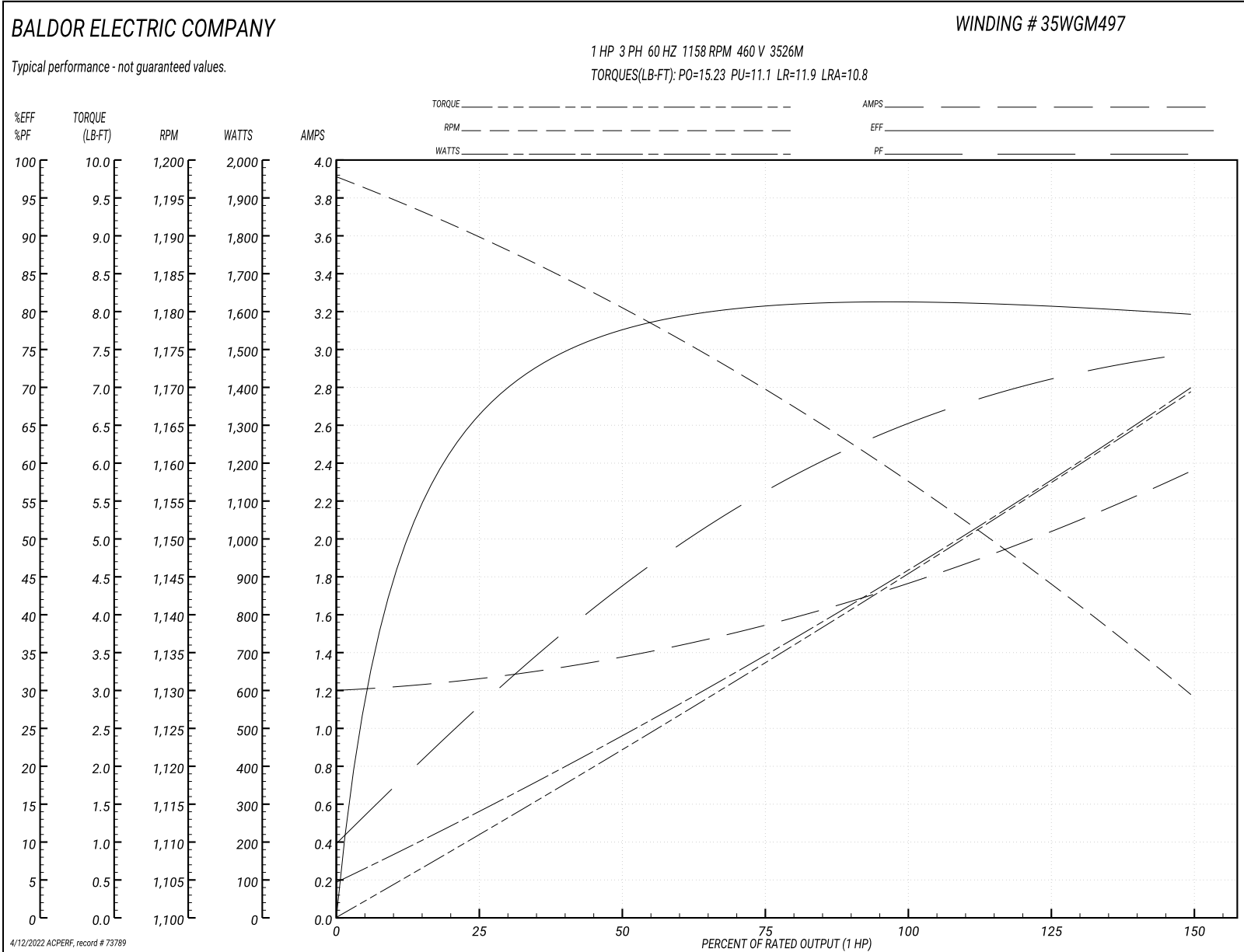
Typical performance - not guaranteed values

| <b>Winding: 35WGM497-R087</b> |                  | <b>Type: 3526M</b>  |  | <b>Enclosure: XPFC</b>       |            |
|-------------------------------|------------------|---------------------|--|------------------------------|------------|
| <b>Nameplate Data</b>         |                  |                     | <b>460 V, 60 Hz:<br/>High Voltage Connection</b> |                              |            |
| <b>Rated Output (HP)</b>      | 1//.75           |                     | <b>Full Load Torque</b>                          | 4.51 LB-FT                   |            |
| <b>Volts</b>                  | 230/460//190/380 |                     | <b>Start Configuration</b>                       | direct on line               |            |
| <b>Full Load Amps</b>         | 3.6/1.8//3.4/1.7 |                     | <b>Breakdown Torque</b>                          | 15.23 LB-FT                  |            |
| <b>R.P.M.</b>                 | 1155//960        |                     | <b>Pull-up Torque</b>                            | 11.1 LB-FT                   |            |
| <b>Hz</b>                     | 60//50           | <b>Phase</b>        | 3  | <b>Locked-rotor Torque</b>   | 11.9 LB-FT |
| <b>NEMA Design Code</b>       | B                | <b>KVA Code</b>     | K  | <b>Starting Current</b>      | 10.8 A     |
| <b>Service Factor (S.F.)</b>  | 1                |                     | <b>No-load Current</b>                           | 1.21 A                       |            |
| <b>NEMA Nom. Eff.</b>         | 82.5             | <b>Power Factor</b> | 64   | <b>Line-line Res. @ 25°C</b> | 16.1 Ω     |
| <b>Rating - Duty</b>          | 40C AMB-CONT     |                     | <b>Temp. Rise @ Rated Load</b>                   | 48°C                         |            |
|                               |                  |                     | <b>Locked-rotor Power Factor</b>                 | 41.5                         |            |
|                               |                  |                     | <b>Rotor inertia</b>                             | 0.155 LB-FT <sup>2</sup>     |            |

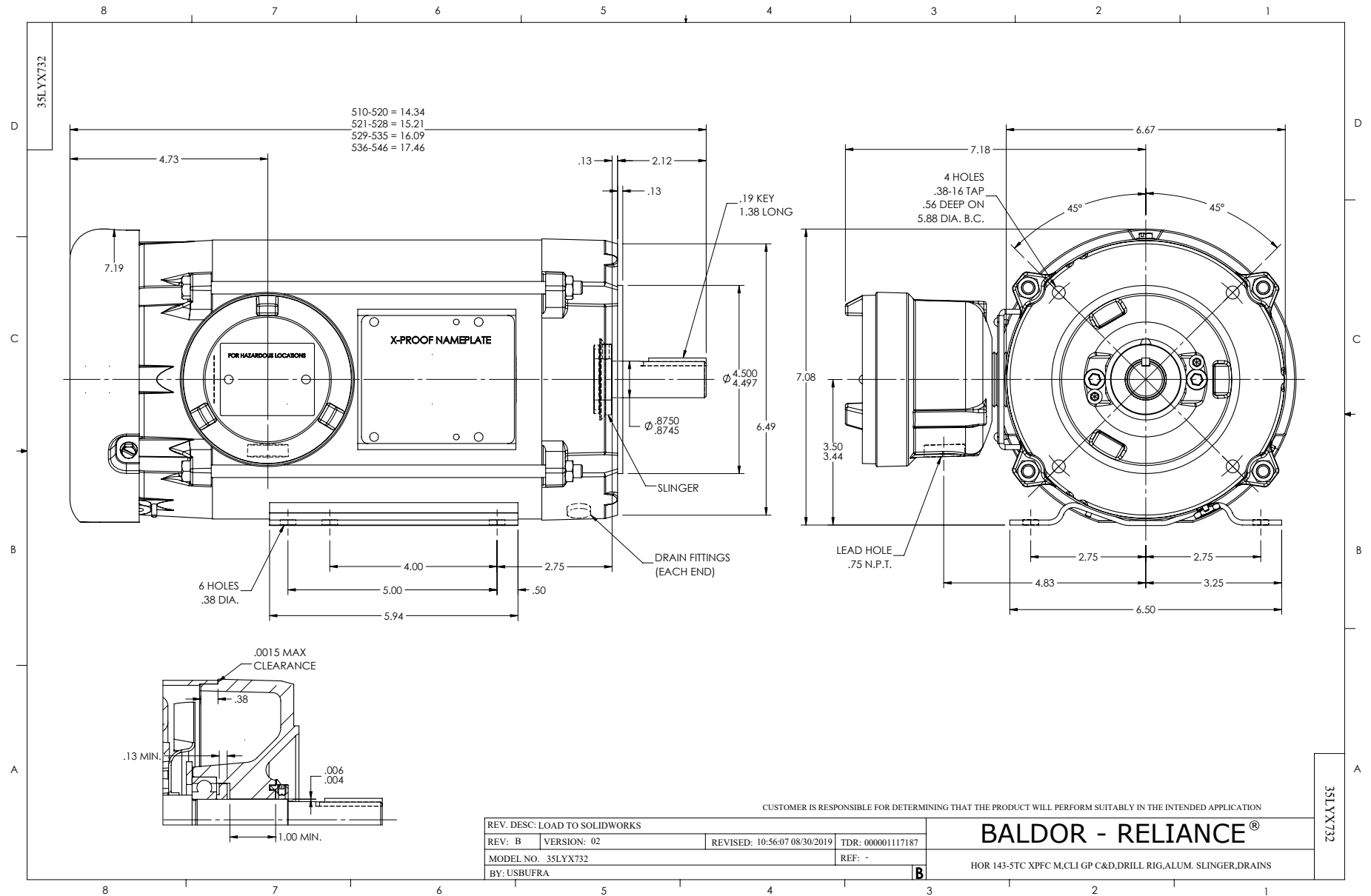
**Load Characteristics 460 V, 60 Hz, 1 HP**

| <b>% of Rated Load</b> | <b>25</b> | <b>50</b> | <b>75</b> | <b>100</b> | <b>125</b> | <b>150</b> |
|------------------------|-----------|-----------|-----------|------------|------------|------------|
| <b>Power Factor</b>    | 28        | 44        | 56        | 65         | 71         | 75         |
| <b>Efficiency</b>      | 66        | 77        | 80.7      | 81.4       | 80.9       | 79.5       |
| <b>Speed</b>           | 1190      | 1180      | 1170      | 1158       | 1145       | 1129       |
| <b>Line amperes</b>    | 1.25      | 1.37      | 1.54      | 1.77       | 2.04       | 2.35       |

Performance Graph at 460V, 60Hz, 1.0HP Typical performance - Not guaranteed values







CD0005



LOW VOLTAGE  
(2Y)



LINE

HIGH VOLTAGE  
(1Y)



LINE

NOTES:

1. INTERCHANGE ANY TWO LINE LEADS TO REVERSE ROTATION.
2. OPTIONAL THERMOSTATS ARE PROVIDED WHEN SPECIFIED.
3. ACTUAL NUMBER OF INTERNAL PARALLEL CIRCUITS MAY BE A MULTIPLE OF THOSE SHOWN ABOVE.
4. LEAD COLORS ARE OPTIONAL. LEADS MUST ALWAYS BE NUMBERED AS SHOWN.

REV. DESC: REVISE TO SHOW OPTIONAL COLORS

REV. LTR: E BY: JLP

REVISED: 01/19/99 10:15

TDR: 0171435

90000

FILE: AAA00005140

MDL: -

MTL: -

**BALDOR ELECTRIC Co.**

3PH, DV, 9 LEADS

CD0005

Marketing maintained PDF of MN416:

<http://www.baldor.com/support/Literature/Load.ashx/MN416?ManNumber=MN416>