

**BALDOR® • RELIANCE** 

**Product Information Packet**

**CDRX14244T**

**2HP,1755//1450RPM,3PH,60HZ,145TC,XPFC,F1**

Part Detail							
Revision:	A	Status:	PRD/A	Change #:		Proprietary:	No
Type:	AC	Elec. Spec:	35WGN909	CD Diagram:	CD0005	Mfg Plant:	
Mech. Spec:		Layout:	35LYX732	Poles:	04	Created Date:	05-23-2019
Base:		Eff. Date:	03-02-2022	Leads:	9#18		

Specs			
Catalog Number:	CDRX14244T	Electrically Isolated Bearing:	Not Electrically Isolated
Enclosure:	XPFC	Feedback Device:	NO FEEDBACK
Frame:	145TC	Heater Indicator:	No Heater
Frame Material:	Steel	Insulation Class:	F
Output @ Frequency:	2.000 HP @ 60 HZ	Inverter Code:	Inverter Duty
	1.500 HP @ 60 HZ	IP Rating:	NONE
Synchronous Speed @ Frequency:	1800 RPM @ 60 HZ	KVA Code:	L
Voltage @ Frequency:	460.0 V @ 60 HZ	Lifting Lugs:	No Lifting Lugs
	230.0 V @ 60 HZ	Locked Bearing Indicator:	Locked Bearing
XP Class and Group:	CLI GP C,D	Motor Lead Termination:	Flying Leads
XP Division:	Division I	Motor Type:	3528M
Agency Approvals:	CSA	Mounting Arrangement:	F1
	CSA EEV	Power Factor:	74
	UR	Product Family:	General Purpose
Auxillary Box:	No Auxillary Box	Pulley Face Code:	C-Face
Auxillary Box Lead Termination:	None	Rodent Screen:	None
Base Indicator:	Rigid	RoHS Status:	ROHS NON-COMPLIANT
Bearing Grease Type:	Polyrex EM (-20F +300F)	Shaft Ground Indicator:	No Shaft Grounding

<b>Blower:</b>	None	<b>Shaft Rotation:</b>	Reversible
<b>Constant Torque Speed Range:</b>	6	<b>Speed Code:</b>	Single Speed
<b>Current @ Voltage:</b>	5.800 A @ 230.0 V	<b>Motor Standards:</b>	NEMA
	5.400 A @ 190.0 V	<b>Starting Method:</b>	Direct on line
	2.900 A @ 460.0 V	<b>Thermal Device - Bearing:</b>	None
	2.700 A @ 380.0 V	<b>Thermal Device - Winding:</b>	Normally Closed Thermostat
<b>Design Code:</b>	B	<b>Vibration Sensor Indicator:</b>	No Vibration Sensor
<b>Drip Cover:</b>	No Drip Cover	<b>Winding Thermal 1:</b>	None
<b>Duty Rating:</b>	CONT	<b>Winding Thermal 2:</b>	None
		<b>XP Temp Code:</b>	T3C

Nameplate NP1401XPSLEV											
NO.						CC	010A				
S/N						TEMP CODE	T3C				
SPEC.	35-0000-0181					INV.TYPE	PWM				
CAT.NO.	CDRX14244T					C HP FR	60		C HP TO	90	
HP	2/1.5					CT HZ FROM	6		CT HZ TO	60	
VOLTS	230/460//190/380					VT HZ FROM	6		VT HZ TO	60	
AMPS	5.8/2.9//5.4/2.7					MAG CUR	3.6/1.8				
RPM	1755//1450					MX RPM	2700				
HZ	60//50		PH	3		CL	F		NOM.EFF.	86.5	
SER.F.	1.00		DES	B		SL HZ	1.5		WK2	0.17	
FRAME	145TC		RATING	40C AMB-CONT							
	55C AMB @ 1.0 SF										
	1.15 SF SINEWAVE					NEMA MG-1 PT 5,IP55					

Parts List		
Part Number	Description	Quantity
SA369894	SA 35-0000-0181	1.000 EA
RA359505	RA 35-0000-0181	1.000 EA
LB1119N	WARNING LABEL	1.000 EA
LC0145B01	CONNECTION LABEL	1.000 EA
NP1401XPSLEV	SS XP INV UL CSA-EEV CC CL-I GP-C&D	1.000 EA
85XU0407S04	4X1/4 U DRIVE PIN STAINLESS	2.000 EA
85XU0407S04	4X1/4 U DRIVE PIN STAINLESS	4.000 EA
MN416A01	TAG-INSTAL-MAINT no wire (2100/bx) 4/22	1.000 EA
LB1359F	ALUM XP CAUTION LABEL	1.000 EA
35FH4005A01SP	IEC FH NO GREASER W/PRIMED	1.000 EA
51XW1032A06	10-32 X .38, TAPTITE II, HEX WSHR SLTD S	3.000 EA
35FN3002A05SP	EXFN, PLASTIC, 6.376 OD, .638 ID	1.000 EA
51XB1214A16	12-14X1.00 HXWSSLD SERTYB	1.000 EA
MJ1000A02	GREASE, MOBIL POLYREX EM - 124047	0.050 LB
HA3104A08	THRUBOLT-5/16-18X9.375 X X	4.000 EA
XY3118A12	5/16-18 HEX NUT DIRECTIONAL SERRATION	4.000 EA
35EP3700B07	FR ENDPLATE, XPFC - GROUP C, W/ DRAIN	1.000 EA
HW5100A03	WAVY WASHER (W1543-017)	1.000 EA
HW4506A02	BREATHER/DRAIN-EXP PROOF-.125-27 NPTF AI	1.000 EA
HW3022E05	.125 DIA X .500 ROLLED SPRING PIN	1.000 EA
HA2009A89	SPACER FOR XP MTRS - 205 BRG.	1.000 EA
35EP1704A40	PUEP 205 BRG XP,GP C,ALUM SLINGER,DRAIN	1.000 EA
HA2071A02	SLINGER ALUM (AUTO)	1.000 EA
80XN1032A04	10-32 X 1/4 SET SCREW	1.000 EA

Parts List (continued)		
Part Number	Description	Quantity
84XN1032J20	SCREW, SOC 10-32 X 1 1/4"BMH4602	2.000 EA
HW4001A01	1/4 HX SOC PIPE PLG (F/S) ALLOY STEEL W/	2.000 EA
60XN1032A07	10-32 X .4375 TRUSS HEAD, TORX SERRATED	2.000 EA
HW4506A02	BREATHER/DRAIN-EXP PROOF-.125-27 NPTF AI	1.000 EA
HW3022E05	.125 DIA X .500 ROLLED SPRING PIN	1.000 EA
35CB1005A01	CONDUIT BOX,MACH - GROUP "C" MTRS	1.000 EA
RM1020A41	O-RING, -150 BUNA-N, .103 CS X 2.862 ID	1.000 EA
11XW1032G06	10-32 X .38, TAPTITE II, HEX WSHR SLTD U	1.000 EA
HW3001B01	BRASS CUP WASHER, FOR #10 SCREW	1.000 EA
35CB1501A01	CONDUIT BOX LID, MACH. - GROUP "C" MTRS	1.000 EA
MG1500Y02	WILKOPON PRIMER YELLOW	0.022 GA
MG1025G29	WILKOFASST, 789.229, DARK CHARCOAL GRAY	0.022 GA
36PA1001	PKG GRP, PRINT PK1017A06	1.000 EA
HW2501D13	KEY, 3/16 SQ X 1.375	1.000 EA
HA7000A01	KEY RETAINER 7/8" DIA SHAFT	1.000 EA

**AC Induction Motor Performance Data**

Record # 74913

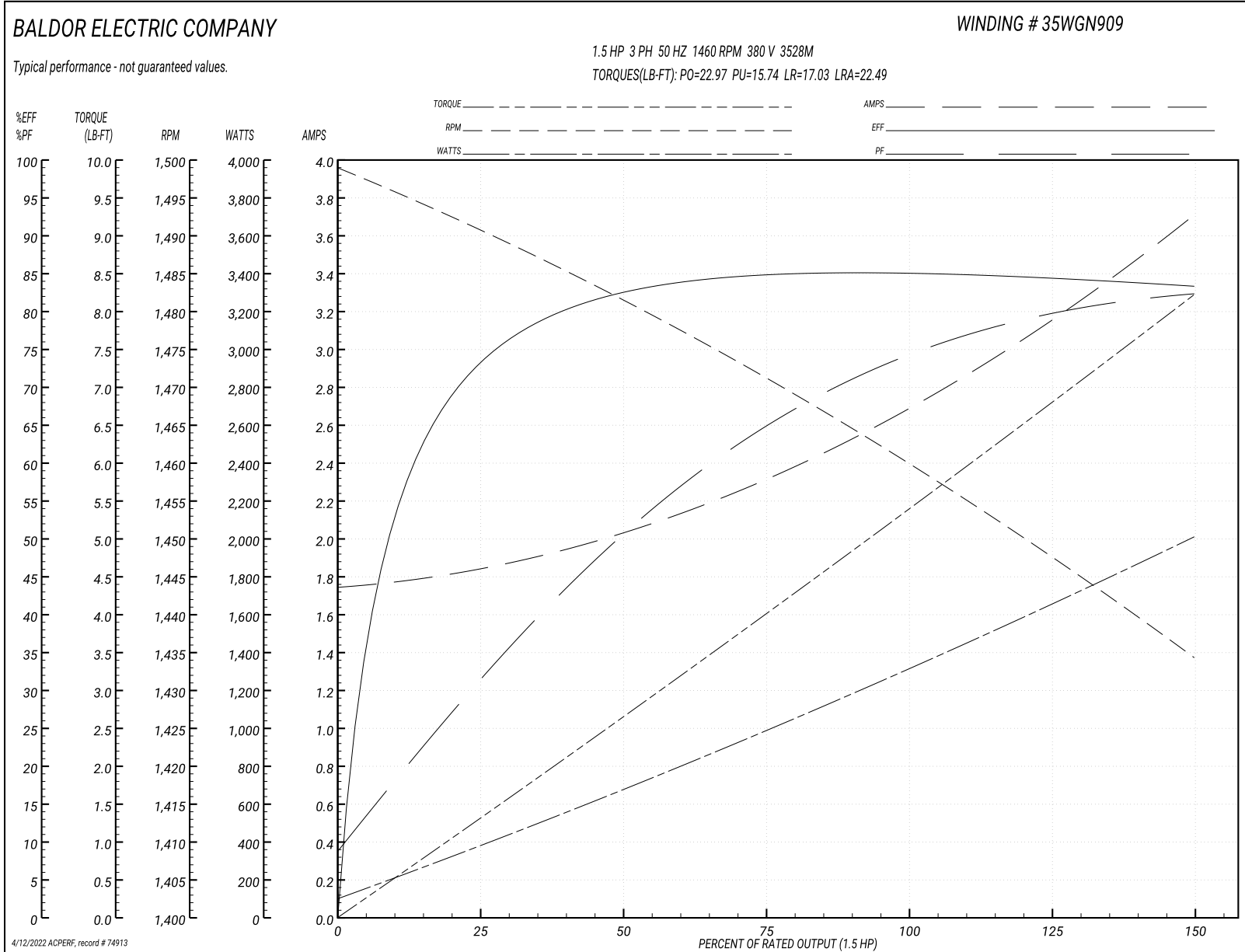
Typical performance - not guaranteed values

<b>Winding: 35WGN909-R011</b>		<b>Type: 3528M</b>		<b>Enclosure: XPFC</b>	
<b>Nameplate Data</b>			<b>380 V, 50 Hz: High Voltage Connection</b>		
<b>Rated Output (HP)</b>		2	<b>Full Load Torque</b>		5.4 LB-FT
<b>Volts</b>		230/460//190/380	<b>Start Configuration</b>		direct on line
<b>Full Load Amps</b>		5.8/2.9//5.4/2.7	<b>Breakdown Torque</b>		22.97 LB-FT
<b>R.P.M.</b>		1755//1450	<b>Pull-up Torque</b>		15.74 LB-FT
<b>Hz</b>	<b>60 Phase</b>		<b>Locked-rotor Torque</b>		17.03 LB-FT
<b>NEMA Design Code</b>	<b>B KVA Code</b>	L	<b>Starting Current</b>		22.49 A
<b>Service Factor (S.F.)</b>		1	<b>No-load Current</b>		1.76 A
<b>NEMA Nom. Eff.</b>	<b>86.5 Power Factor</b>	74	<b>Line-line Res. @ 25°C</b>		8.02 Ω
<b>Rating - Duty</b>		40C AMB-CONT	<b>Temp. Rise @ Rated Load</b>		59°C
<b>S.F. Amps</b>			<b>Temp. Rise @ S.F. Load</b>		70°C
			<b>Locked-rotor Power Factor</b>		57.8
			<b>Rotor inertia</b>		0.165 LB-FT <sup>2</sup>

**Load Characteristics 380 V, 50 Hz, 1.5 HP**

<b>% of Rated Load</b>	<b>25</b>	<b>50</b>	<b>75</b>	<b>100</b>	<b>125</b>	<b>150</b>
<b>Power Factor</b>	32	52	65	73	80	83
<b>Efficiency</b>	72.8	82.2	84.8	85.2	84.5	83.2
<b>Speed</b>	1491	1481	1471	1460	1448	1434
<b>Line amperes</b>	1.83	2.01	2.32	2.72	3.16	3.7

Performance Graph at 380V, 50Hz, 1.5HP Typical performance - Not guaranteed values





**AC Induction Motor Performance Data**

Record # 74914

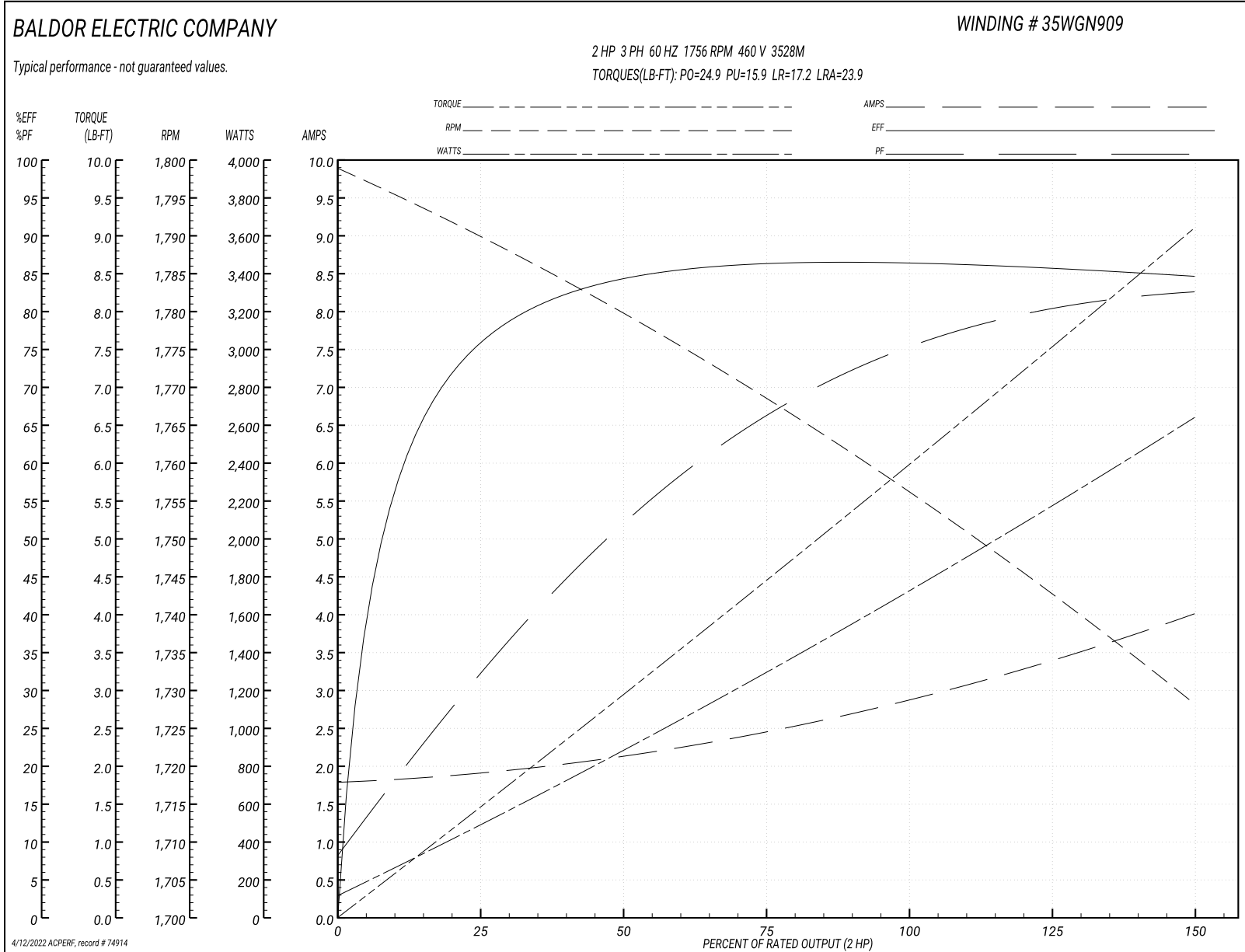
Typical performance - not guaranteed values

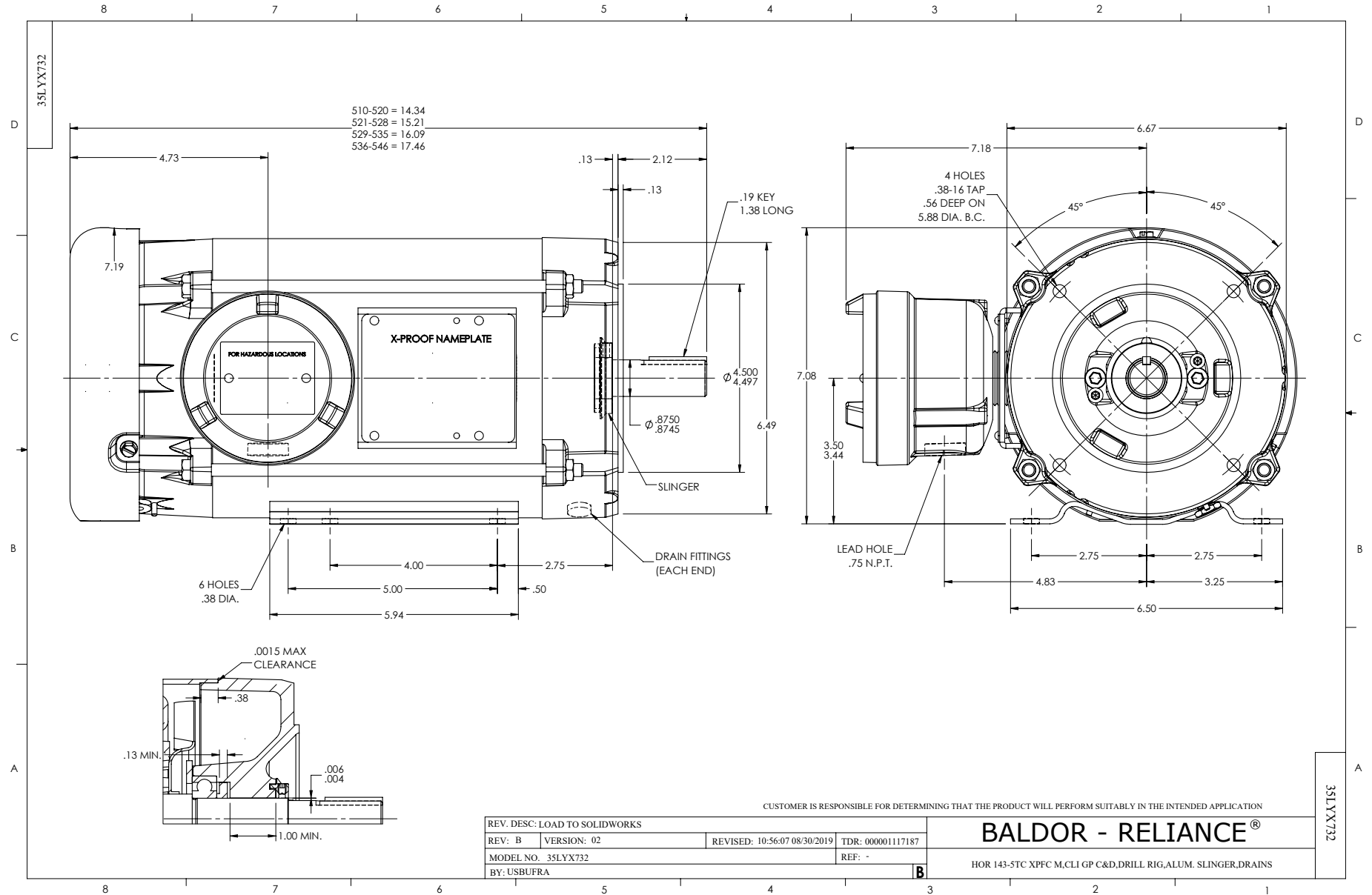
<b>Winding: 35WGN909-R011</b>		<b>Type: 3528M</b>		<b>Enclosure: XPFC</b>	
<b>Nameplate Data</b>			<b>460 V, 60 Hz: High Voltage Connection</b>		
<b>Rated Output (HP)</b>		2	<b>Full Load Torque</b>		5.99 LB-FT
<b>Volts</b>		230/460//190/380	<b>Start Configuration</b>		direct on line
<b>Full Load Amps</b>		5.8/2.9//5.4/2.7	<b>Breakdown Torque</b>		24.9 LB-FT
<b>R.P.M.</b>		1755//1450	<b>Pull-up Torque</b>		15.9 LB-FT
<b>Hz</b>	<b>60 Phase</b>	3	<b>Locked-rotor Torque</b>		17.2 LB-FT
<b>NEMA Design Code</b>	<b>B KVA Code</b>	L	<b>Starting Current</b>		23.9 A
<b>Service Factor (S.F.)</b>		1	<b>No-load Current</b>		1.81 A
<b>NEMA Nom. Eff.</b>	<b>86.5 Power Factor</b>	74	<b>Line-line Res. @ 25°C</b>		8.02 Ω
<b>Rating - Duty</b>		40C AMB-CONT	<b>Temp. Rise @ Rated Load</b>		65°C
<b>S.F. Amps</b>			<b>Temp. Rise @ S.F. Load</b>		77°C
			<b>Locked-rotor Power Factor</b>		52.4
			<b>Rotor inertia</b>		0.165 LB-FT <sup>2</sup>

**Load Characteristics 460 V, 60 Hz, 2 HP**

<b>% of Rated Load</b>	<b>25</b>	<b>50</b>	<b>75</b>	<b>100</b>	<b>125</b>	<b>150</b>
<b>Power Factor</b>	33	53	66	74	80	83
<b>Efficiency</b>	75.5	84	86.3	86.5	85.8	84.5
<b>Speed</b>	1790	1779	1769	1756	1743	1728
<b>Line amperes</b>	1.89	2.11	2.46	2.91	3.4	4

Performance Graph at 460V, 60Hz, 2.0HP Typical performance - Not guaranteed values





CD0005

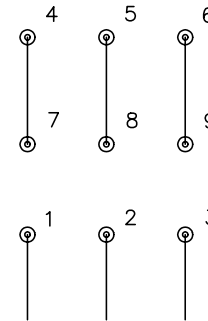


LOW VOLTAGE  
(2Y)



LINE

HIGH VOLTAGE  
(1Y)



LINE

NOTES:

1. INTERCHANGE ANY TWO LINE LEADS TO REVERSE ROTATION.
2. OPTIONAL THERMOSTATS ARE PROVIDED WHEN SPECIFIED.
3. ACTUAL NUMBER OF INTERNAL PARALLEL CIRCUITS MAY BE A MULTIPLE OF THOSE SHOWN ABOVE.
4. LEAD COLORS ARE OPTIONAL. LEADS MUST ALWAYS BE NUMBERED AS SHOWN.

REV. DESC: REVISE TO SHOW OPTIONAL COLORS			
REV. LTR: E	BY: JLP	REVISED: 01/19/99 10:15	TDR: 0171435
900000		FILE: AAA00005140	MDL: -
		MTL: -	

**BALDOR ELECTRIC Co.**

3PH, DV, 9 LEADS

CD0005

Marketing maintained PDF of MN416:

<http://www.baldor.com/support/Literature/Load.ashx/MN416?ManNumber=MN416>