

BALDOR® • RELIANCE 

Product Information Packet

CECP2276T

7.5HP, 1180RPM, 3PH, 60HZ, 254TC, 0954M, TEFC

| Part Detail | | | | | | | |
|-------------|--------|-------------|------------|-------------|--------|---------------|------------|
| Revision: | X | Status: | PRD/A | Change #: | | Proprietary: | No |
| Type: | AC | Elec. Spec: | 09WGX827 | CD Diagram: | CD0005 | Mfg Plant: | |
| Mech. Spec: | 09H180 | Layout: | 09LYH180 | Poles: | 06 | Created Date: | 11-14-2013 |
| Base: | RG | Eff. Date: | 06-11-2021 | Leads: | 9#12 | | |

| Specs | | | |
|---------------------------------|-------------------------|--------------------------------|-----------------------------|
| Catalog Number: | CECP2276T | Heater Indicator: | No Heater |
| Enclosure: | TEFC | Insulation Class: | F |
| Frame: | 254TC | Inverter Code: | Inverter Duty |
| Frame Material: | Iron | KVA Code: | J |
| Output @ Frequency: | 7.500 HP @ 60 HZ | Lifting Lugs: | Standard Lifting Lugs |
| Synchronous Speed @ Frequency: | 1200 RPM @ 60 HZ | Locked Bearing Indicator: | Locked Bearing |
| Voltage @ Frequency: | 460.0 V @ 60 HZ | Motor Lead Quantity/Wire Size: | 9 @ 12 AWG |
| | 230.0 V @ 60 HZ | Motor Lead Exit: | Ko Box |
| XP Class and Group: | CLI GP A,B,C,D | Motor Lead Termination: | Flying Leads |
| XP Division: | Division II | Motor Type: | 0954M |
| Agency Approvals: | UR | Mounting Arrangement: | F1 |
| | CSA EEV | Power Factor: | 71 |
| | CSA | Product Family: | Super-E Chemical Processing |
| Auxillary Box: | No Auxillary Box | Pulley End Bearing Type: | Ball |
| Auxillary Box Lead Termination: | None | Pulley Face Code: | C-Face |
| Base Indicator: | Rigid | Pulley Shaft Indicator: | Standard |
| Bearing Grease Type: | Polyrex EM (-20F +300F) | Rodent Screen: | None |
| Blower: | None | Shaft Extension Location: | Pulley End |

| | | | |
|---------------------------------------|---------------------------|------------------------------------|---------------------|
| Constant Torque Speed Range: | 1.0 | Shaft Ground Indicator: | No Shaft Grounding |
| Current @ Voltage: | 10.700 A @ 460.0 V | Shaft Rotation: | Reversible |
| | 21.400 A @ 230.0 V | Shaft Slinger Indicator: | Shaft Slinger |
| | 25.000 A @ 208.0 V | Speed Code: | Single Speed |
| Design Code: | A | Motor Standards: | NEMA |
| Drip Cover: | No Drip Cover | Starting Method: | Direct on line |
| Duty Rating: | CONT | Thermal Device - Bearing: | None |
| Electrically Isolated Bearing: | Not Electrically Isolated | Thermal Device - Winding: | None |
| Feedback Device: | NO FEEDBACK | Vibration Sensor Indicator: | No Vibration Sensor |
| Front Face Code: | Standard | Winding Thermal 1: | None |
| Front Shaft Indicator: | None | Winding Thermal 2: | None |
| | | XP Temp Code: | T3C |

| Nameplate NP3995ABAL | | | | | | | | | | | |
|---------------------------------------|----------|--------------|---------------------|-----------------------|---------|-------------------|-----------|-------------|-----|--------------|---------------|
| CAT # CECP2276T | | | SER | | | CC 010A | | | | | |
| SPEC 09H180X827 | | | RATING 40C AMB-CONT | | | | | | | | |
| HZ | VOLTS | | AMPS | | RPM | HP | CODE | SF | DES | PF | NEMA NOM. EFF |
| 60 | 230/460 | | 21.4/10.7 | | 1180 | 7.5 | J | 1.15 | A | 71 % | 91 % |
| | | | | | | | | | | % | % |
| PH 3 | CL F | MAX RPM 1800 | | MAX CORR KVAR 4.15 | | USABLE AT 208V 25 | | | | | |
| IP55 | FR 254TC | ENCL TEFC | | DE BRG 6309 | | ODE BRG 6309 | | | | | |
| GREASE POLYREX EM | | | | | | MTR WT 305 | | LBS | | | |
| USABLE AT 50HZ 5HP 190/380V 18.6/9.3A | | | | | | SF1.0 | | | | | |
| | | | | | | | | | | | |
| | | | | | | | | | | | |
| | | | | | | | | | | | |
| CL I DIV 2 GRPS A,B,C,D | | | | CL I ZONE 2 GRPS | | | | IIA,IIB,IIC | | TEMP T 160 C | |
| 1.0 SF ON PWM INVERTER | | POWER | | INV TEMP CL 180 | | C | | | | | |
| CHP 60-90 | HZ 1.5:1 | CT 1.0-60 | | HZ 60:1 | VT 0-60 | | HZ 1000:1 | | | | |
| SPACE HEATER LEADS H1-H2: | | | | TIE LIKE NUMBERS | | | | TOGETHER | | | |
| V | A | W | | MAX SPACE HEATER TEMP | | | | | | | |

| Parts List | | |
|---------------|--|----------|
| Part Number | Description | Quantity |
| SA272285 | SA 09H180X827 | 1.000 EA |
| RA258895 | RA 09H180X827 | 1.000 EA |
| 09FN3001D01SP | EXTERNAL FAN, PLASTIC (COMES W/SCREW FRO | 1.000 EA |
| 09CB1002A12P | KOBX W/1.25 NPT LEAD HOLE & 2.38 MTG HOL | 1.000 EA |
| 09GS1010 | GASKET, DWG, LEADWIRE SEPERATOR | 1.000 EA |
| 51XW2520A12 | .25-20 X .75, TAPTITE II, HEX WSHR SLTD | 4.000 EA |
| WD1000B16 | T&B CX70TN OR L70P TERMINAL LUG | 1.000 EA |
| 59XW2520G07 | .25-20X.44,HEX SER WSHR,TAPTITE 2,GREEN | 1.000 EA |
| HA3400A39 | STUD- 3/8-16 X 6.44 OAL HEX | 4.000 EA |
| HW1001A38 | LOCKWASHER 3/8, ZINC PLT .688 OD, .382 I | 4.000 EA |
| HA4017A08 | .125X3.50 GREASER EXTEN. | 1.000 EA |
| HA4017A02 | .125X2.50 GREASER EXTENS.F/S | 1.000 EA |
| HW4019A01 | PIPE COUPLING 1/8 NPT,STEEL,ZINC COATING | 1.000 EA |
| HW5100A11 | W3917-042 WVY WSHR (WB) | 1.000 EA |
| 10XN2520K36 | 1/4-20 X 2.25" HX HD SCRWGRADE 5, ZINC P | 2.000 EA |
| 09FH1000P | FAN COVER, CAST W/EPOXY PRIMER | 1.000 EA |
| 09EP1300A12P | ENDPLATE, MACH EPOXY PRIMER | 1.000 EA |
| 10XN3816K28 | 3/8-16 X 1.75 HEX HD CAP SCREW, GRADE 5 | 4.000 EA |
| HW1001A38 | LOCKWASHER 3/8, ZINC PLT .688 OD, .382 I | 4.000 EA |
| 10XN2520K36 | 1/4-20 X 2.25" HX HD SCRWGRADE 5, ZINC P | 4.000 EA |
| HW1001A38 | LOCKWASHER 3/8, ZINC PLT .688 OD, .382 I | 4.000 EA |
| XY3816A12 | 3/8-16 FINISHED NUT | 4.000 EA |
| HW4600B44 | V-RING SLINGER 1.500 X 1.810 X .28 VITON | 1.000 EA |
| HA1005A26 | SLINGER, OD 3.00, ID 1.75, 309 BRG | 1.000 EA |

| Parts List (continued) | | |
|------------------------|--|----------|
| Part Number | Description | Quantity |
| 12CB1503P | CONDUIT BOX LID, CAST W/EPOXY PRIMER | 1.000 EA |
| 12GS1002 | GASKET, CONDUIT BOX LID, NEOP | 1.000 EA |
| 10XN3118K16 | 5/16-18 X 1' GRADE #5, STL, ZINC PLATE | 2.000 EA |
| HW1001A31 | LOCKWASHER 5/16, ZINC PLT.591 OD, .319 I | 2.000 EA |
| HW2501G25 | KEY, 3/8 SQ X 2.875 | 1.000 EA |
| MJ5001A27 | 32220KN GRAY SEALER *MIN BUY 4 QTS=1GAL | 0.031 QT |
| MJ5001A14 | DYNAPRO SEALANT, CP MTR VC#2508050 (603 | 0.023 EA |
| LB1115N | LABEL,LIFTING DEVICE (ON ROLLS) | 1.000 EA |
| 09EP1118A05LP5 | FREP MACH, 309 BRG. EPOXY PRIMER | 1.000 EA |
| MN416A01 | TAG-INSTAL-MAINT no wire (2100/bx) 4/22 | 1.000 EA |
| LD7020D09 | LEAD SET, 12AWG, 9 LEAD, 20" LONG LEADS | 1.000 EA |
| HW4500A17 | 317400 ALEMITE GREASE RELIEF | 1.000 EA |
| HW4500A21 | 1618BALEMITE FITTING 825 UNIVERSAL | 1.000 EA |
| HA4054 | SHORT T-DRAIN FITTING, .125" N.P.T. | 1.000 EA |
| HA4051A00 | PLASTIC CAP FOR GREASE FITTING | 1.000 EA |
| MJ1000A02 | GREASE, MOBIL POLYREX EM - 124047 | 0.080 LB |
| HW4500A03 | GREASE FITTING, .125 NPT 1610(ALEMITE) 8 | 1.000 EA |
| HW4500A17 | 317400 ALEMITE GREASE RELIEF | 1.000 EA |
| HA4054 | SHORT T-DRAIN FITTING, .125" N.P.T. | 1.000 EA |
| HA4051A00 | PLASTIC CAP FOR GREASE FITTING | 1.000 EA |
| HW2500A25 | WOODRUFF KEY USA #1008 #BLOW CARBON STEE | 1.000 EA |
| MG1025N19 | WILKOFASST, 778.50, RELIANCE BLUE-GREEN | 0.050 GA |
| 85XU0407S04 | 4X1/4 U DRIVE PIN STAINLESS | 4.000 EA |
| NP3995ABAL | SS SUPER-E SD XEX CLI DIV2 UR CSA-C-US E | 1.000 EA |

| | | |
|----------|-------------------------|----------|
| 40PA1005 | PACKAGING GROUP, 09 STD | 1.000 EA |
|----------|-------------------------|----------|

AC Induction Motor Performance Data

Record # 47260

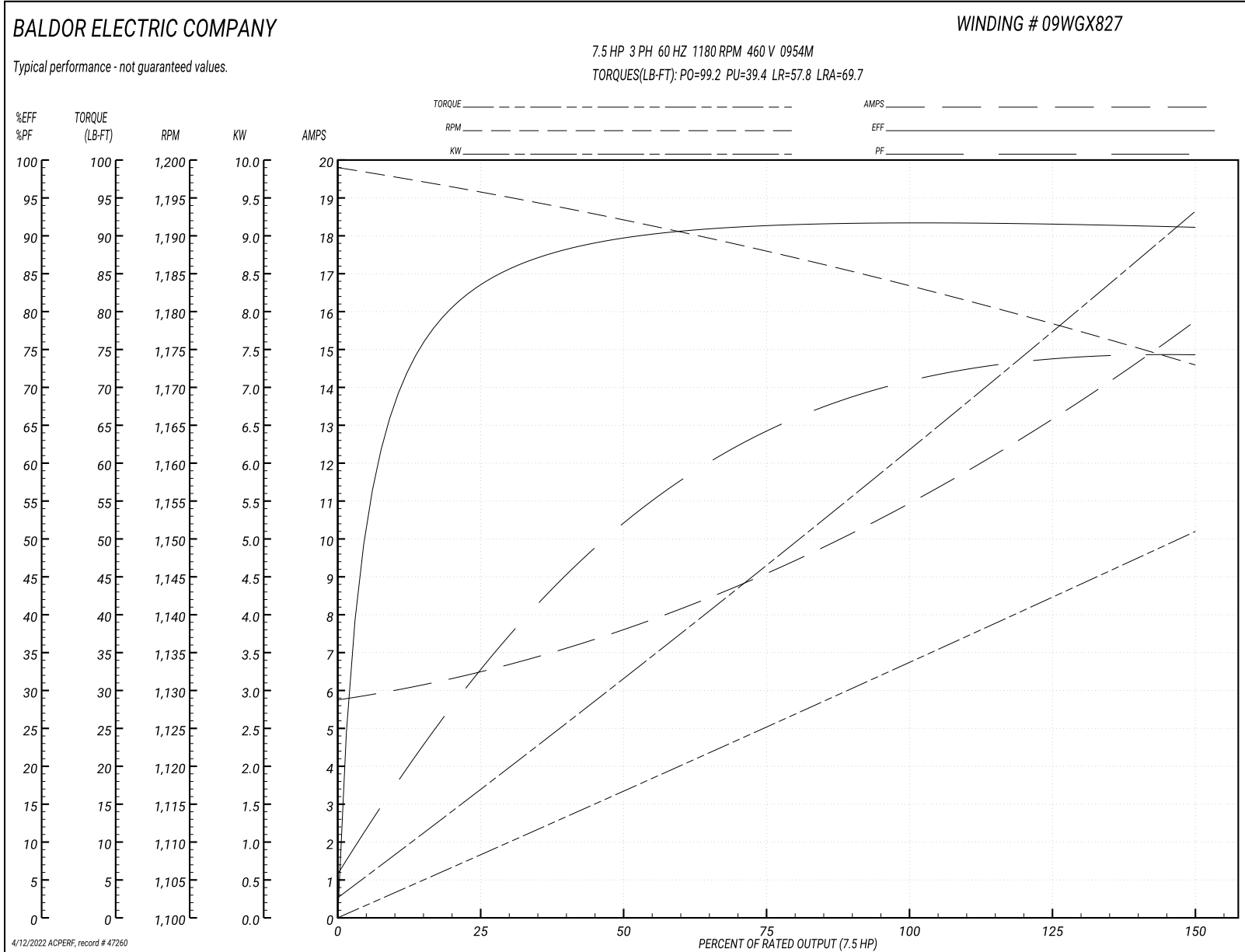
Typical performance - not guaranteed values

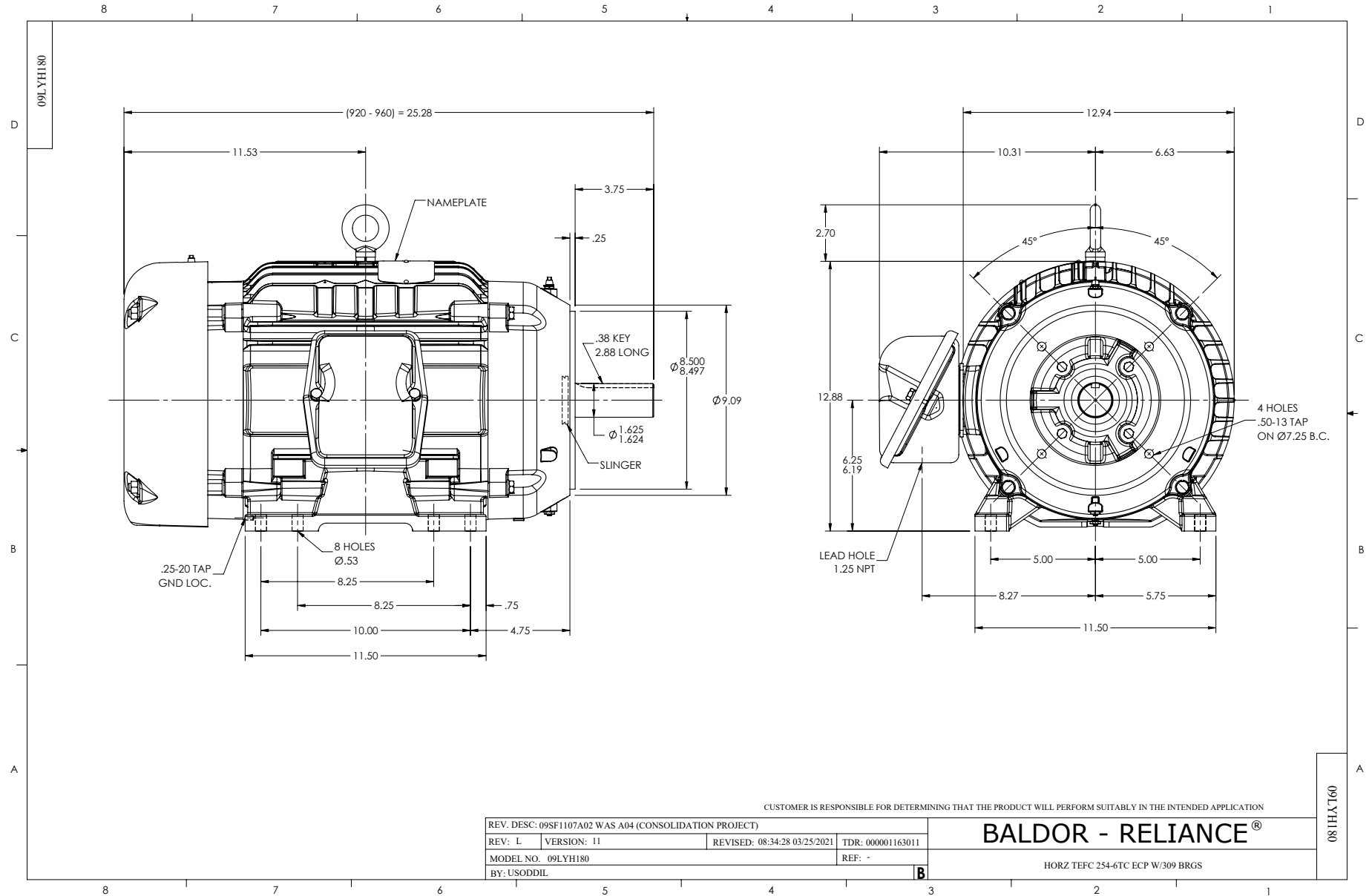
| Winding: 09WGX827-R040 | | Type: 0954M | | Enclosure: TEFC | |
|-------------------------------|-----------------|----------------------------|--|------------------------------|--------|
| Nameplate Data | | | 460 V, 60 Hz: High Voltage Connection | | |
| Rated Output (HP) | 7.5 | Full Load Torque | 32.4 LB-FT | | |
| Volts | 230/460 | Start Configuration | direct on line | | |
| Full Load Amps | 21.4/10.7 | Breakdown Torque | 99.2 LB-FT | | |
| R.P.M. | 1180 | Pull-up Torque | 39.4 LB-FT | | |
| Hz | 60 Phase | 3 | Locked-rotor Torque | 57.8 LB-FT | |
| NEMA Design Code | A | KVA Code | J | Starting Current | 69.7 A |
| Service Factor (S.F.) | 1.15 | | No-load Current | 5.84 A | |
| NEMA Nom. Eff. | 91 | Power Factor | 71 | Line-line Res. @ 25°C | 0.89 Ω |
| Rating - Duty | 40C AMB-CONT | | Temp. Rise @ Rated Load | 31°C | |
| S.F. Amps | | | Temp. Rise @ S.F. Load | 36°C | |
| | | | Rotor inertia | 4.34 LB-FT ² | |

Load Characteristics 460 V, 60 Hz, 7.5 HP

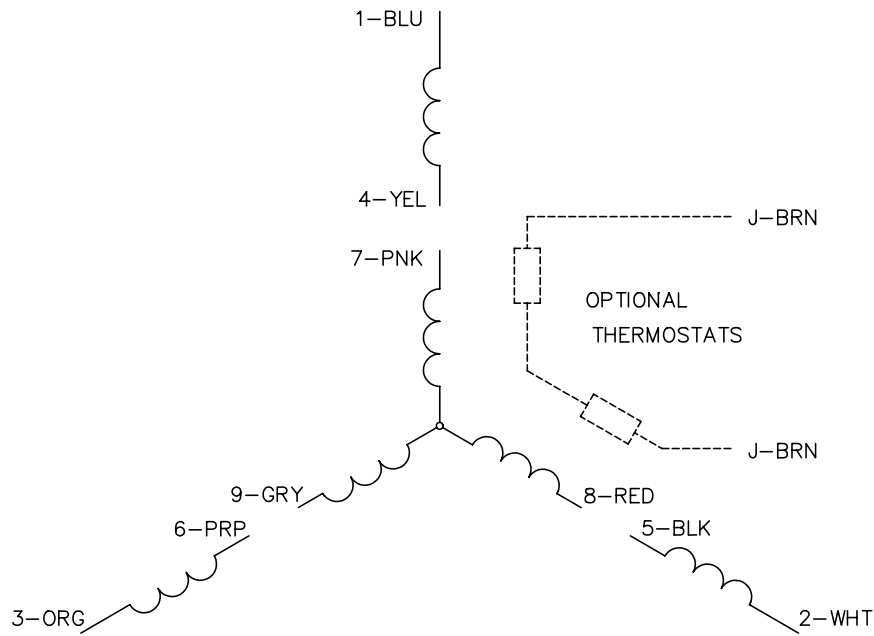
| % of Rated Load | 25 | 50 | 75 | 100 | 125 | 150 | S.F. |
|------------------------|-----------|-----------|-----------|------------|------------|------------|-------------|
| Power Factor | 32 | 52 | 63 | 71 | 73 | 75 | 72 |
| Efficiency | 83 | 89.7 | 91.5 | 91.5 | 91.8 | 91.2 | 91.9 |
| Speed | 1196 | 1192 | 1189 | 1184 | 1179 | 1173 | 1181 |
| Line amperes | 6.34 | 7.49 | 8.87 | 10.7 | 12.9 | 15.7 | 12 |

Performance Graph at 460V, 60Hz, 7.5HP Typical performance - Not guaranteed values





CD0005

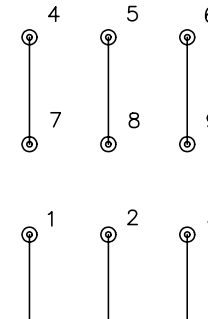


LOW VOLTAGE
(2Y)



LINE

HIGH VOLTAGE
(1Y)



LINE

NOTES:

1. INTERCHANGE ANY TWO LINE LEADS TO REVERSE ROTATION.
2. OPTIONAL THERMOSTATS ARE PROVIDED WHEN SPECIFIED.
3. ACTUAL NUMBER OF INTERNAL PARALLEL CIRCUITS MAY BE A MULTIPLE OF THOSE SHOWN ABOVE.
4. LEAD COLORS ARE OPTIONAL. LEADS MUST ALWAYS BE NUMBERED AS SHOWN.

| | | | |
|---|---------|-------------------------|--------------|
| REV. DESC: REVISE TO SHOW OPTIONAL COLORS | | | |
| REV. LTR: E | BY: JLP | REVISED: 01/19/99 10:15 | TDR: 0171435 |
| 900000 | | FILE: AAA00005140 | MDL: - |
| | | MTL: - | |

BALDOR ELECTRIC Co.

3PH, DV, 9 LEADS

CD0005

Marketing maintained PDF of MN416:

<http://www.baldor.com/support/Literature/Load.ashx/MN416?ManNumber=MN416>