



Customer information packet

CECP4316T

75HP, 1780RPM, 3PH, 60HZ, 365TC, TEFC, F1

Class - None

Division - Division II

Specifications

| | |
|-------------------------------|--|
| Enclosure | TEFC |
| Frame | 365TC |
| Frame Material | Iron |
| Frequency | 60.00 Hz |
| Motor Letter Type | Three Phase |
| Output @ Frequency | 75.000 HP @ 60 HZ |
| Phase | 3 |
| Synchronous Speed @ Frequency | 1800 RPM @ 60 HZ |
| Voltage @ Frequency | 230.0 V @ 60 HZ 460.0 V @ 60 HZ |
| XP Class and Group | None |
| XP Division | Division II |
| Agency Approvals | CCSAUSEEV NEMA PREMIUM NEMA_PREMIUM UR |
| Ambient Temperature | 40 °C |
| Auxillary Box | No Auxillary Box |
| Base Indicator | Rigid |
| Bearing Grease Type | Polyrex EM (-20F +300F) |
| Current @ Voltage | 87.000 A @ 460.0 V 189.000 A @ 208.0 V 174.000 A @ 230.0 V |
| Design Code | B |
| Drip Cover | No Drip Cover |
| Duty Rating | CONT |
| Efficiency @ 100% Load | 95.4 % |
| Feedback Device | NO FEEDBACK |
| Heater Indicator | No Heater |
| High Voltage Full Load Amps | 87.0 a |
| Insulation Class | F |
| Inverter Code | Inverter Ready |

Part detail

| | |
|--------------|------------|
| Revision | A |
| Type | AC |
| Mech. spec. | |
| Base | |
| Status | PRD/A |
| Elec. spec. | A36WG4148 |
| Layout | 617428-136 |
| Eff. date | 07-01-2022 |
| CD Diagram | 416820-002 |
| Poles | 04 |
| Leads | 3#4,6#6 |
| Proprietary | False |
| Created date | 11-08-2021 |

| | |
|--------------------------------------|-----------------------|
| KVA Code | G |
| Lifting Lugs | Standard Lifting Lugs |
| Max Speed | 2700 rpm |
| Motor Lead Quantity/Wire Size | 3 @ 4 AWG |
| Motor Standards | NEMA |
| Motor Type | A36070M |
| Mounting Arrangement | F1 |
| Number of Poles | 4 |
| Overall Length | 33.44 IN |
| Power Factor | 86 |
| Product Family | General Industrial |
| Pulley End Bearing Type | Ball |
| Pulley Face Code | C-Face |
| Service Factor | 1.15 |
| Shaft Diameter | 2.375 IN |
| Shaft Ground Indicator | No Shaft Grounding |
| Shaft Rotation | Reversible |
| Shaft Slinger Indicator | Shaft Slinger |
| Speed | 1780 rpm |
| Speed Code | Single Speed |
| Starting Method | Direct on line |
| Thermal Device - Bearing | None |
| Thermal Device - Winding | None |

Nameplate

NP4033LUA

| | | | | | | | | | | | | |
|--------------------|--------------------------------|-----------|------------------|----------------------------|---------------|----------------------|--------------------|-----------------------|---------------|-----------|----------------------|-------|
| CAT # | CECP4316T | | SER | | | CC | 010A | | | | | |
| SPEC | A36-0006-4148 | | RATING | 40C AMB-CONT | | | | | | | | |
| HZ | VOLTS | | AMPS | RPM | HP | CODE | - | SF | DES | PF | NEMA NOM. EFF | |
| 60 | 230/460 | | 174/87 | 1780 | 75 | G | | 1.15 | B | 86 % | 95.4 % | |
| | | | | | | | | | | % | % | |
| PH | 3 | CL | F | MAX RPM | 2700 | MAX CORR KVAR | 16 | USABLE AT 208V | 189 | A | | |
| BRG | DE | 6313 | ODE | | ENCL | TEFC | FR | 365TC | IP | 55 | | |
| GREASE | POLYREX EM | | | | MTR WT | | LBS | | | | | |
| | CL I DIV 2 GRPS A,B,C,D | | | CL I ZONE 2 GRPS | | | IIA,IIB,IIC | | TEMP T | 200 | C | |
| INV READY | CT | 15-60 | HZ | 4:1 | VT | 3-60 | HZ | 20:1 | CHP | 60-90 | HZ | 1.5:1 |
| INV TEMP CL | 200 | C | USABLE AT | 50HZ 60HP 190/380V 168/84A | | | | | SF1.0 | | | |
| SFA 198/99 | | | | | | | | | | | | |

Parts list

| Part number | Description | Quantity |
|-------------|--|----------|
| SA399139 | SA A36-0006-4148 | 1.000 ea |
| RA390188 | RA A36-0006-4148 | 1.000 ea |
| 421948032 | LABEL, MYLAR | 1.000 ea |
| 000692000VD | LABEL WARNING | 1.000 ea |
| NP4033LUA | SS SUPER-E SD XEX CLI DIV2 UR CSA-C US-E | 1.000 ea |
| 085922073B | BRKT 360 085922072WCC KB | 1.000 ea |
| 415072001B | CLAMP | 1.000 ea |
| 078559001A | +FANCV - 360 | 1.000 ea |
| 034180012DA | KEY 1X4X1/4X1-1/2 L | 1.000 ea |
| 412118006A | DRAIN | 1.000 ea |
| 702676001C | FAN 360 | 1.000 ea |
| 004824015A | GREASE POLYREX EM | 0.540 lb |
| 032018012DK | HHCS 1/2-13X1-1/2 PLTD. 032018012DR | 4.000 ea |
| 032018008AK | HHCS 1/4-20X1 PLATED | 4.000 ea |
| 032018024CK | HHCS 3/8-16X3 PLTD. | 3.000 ea |
| 415096002A | CPLG 1/8 HEX TYPE | 1.000 ea |
| 415045002E | SLGR | 1.000 ea |
| 410700004F | WSHR | 1.000 ea |
| 034530052AB | P/NIP 1/8X6-1/2 Zinc | 1.000 ea |
| 034690002AB | PPLG 1/4" PLTD. | 1.000 ea |
| 034690002AB | PPLG 1/4" PLTD. | 1.000 ea |
| 085922070B | BRKT 360 085922069WCA | 1.000 ea |
| 032018012DK | HHCS 1/2-13X1-1/2 PLTD. 032018012DR | 4.000 ea |
| 032018024CK | HHCS 3/8-16X3 PLTD. | 3.000 ea |
| 415045002E | SLGR | 1.000 ea |
| 412118006A | DRAIN | 1.000 ea |
| 076708000BB | CONDUIT BOX-360 | 1.000 ea |
| 065776000C | GASKET,MAIN CBOX, 320-400 | 1.000 ea |
| 076709000A | C/B Cover - 360 | 1.000 ea |
| 067053000B | GASK 320-400 | 1.000 ea |
| 418150003A | GREASE FITTING CAP | 1.000 ea |

| | | |
|-------------|--|----------|
| 032018010CK | HHCS 3/8-16X1-1/4 PLTD. 032018010CR | 4.000 ea |
| 035000001A | ALFTG 1/8" 1610-BL | 1.000 ea |
| 415000115H | T/LUG #2AWG-4/0AWG | 1.000 ea |
| 033512008LB | HHTTS 1/4-20X1 PLATED | 4.000 ea |
| 406099000A | PLUG - FAN COVER 320-440 | 1.000 ea |
| 034000014AB | WSH ID.406 OD.812 TH.065 | 4.000 ea |
| 048977006B | GRFTG - XP | 1.000 ea |
| 035000001A | ALFTG 1/8" 1610-BL | 1.000 ea |
| 418150003A | GREASE FITTING CAP | 1.000 ea |
| MG1025N19 | WILKO 778.50 BLUE GREEN - 55 GAL DRUMS | 0.250 ga |
| 033775004EA | DRSCR #6-1/4 304 S.S. | 4.000 ea |
| 034180034HA | KEY 5/8X5/8X4-1/4 L | 1.000 ea |
| 14PA1000 | PACKAGING 314 GROUP COMBINED PRINT | 1.000 ea |
| HW1000A32 | 5/16 FL WASHER WIDE, ID=.344, OD=1.125 | 3.000 ea |
| 032509020C | CARRIAGE BOLT - 360 | 3.000 ea |
| 032018005DL | 1/2-13 X 5/8 SILICON BRONZE HHCS | 1.000 ea |
| LB1449 | DIV-2/NEC WARNING LABEL | 1.000 ea |

617428-136

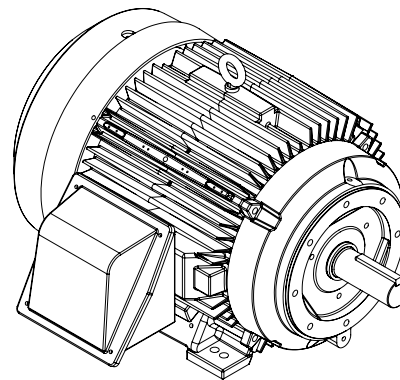
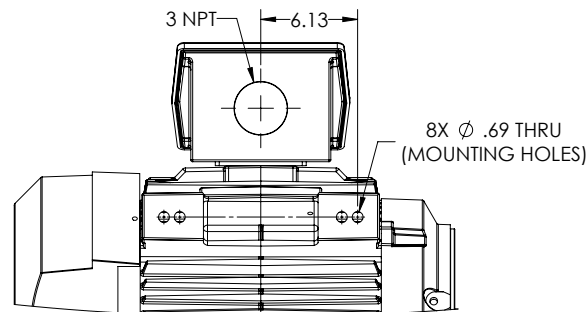
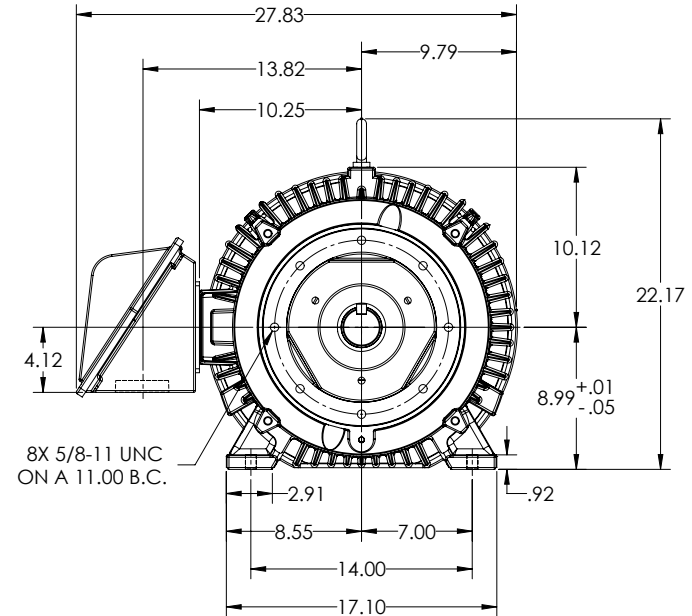
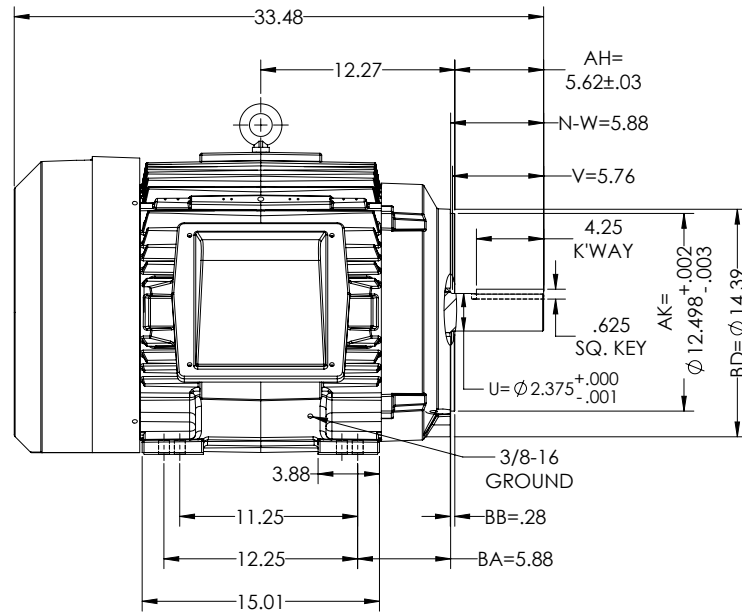
DUTY MASTER ALTERNATING CURRENT MOTORS
SQUIRREL-CAGE INDUCTION

ENCLOSURE: TOTALLY ENCLOSED

MOUNTING: FOOT, F-1 SIDE

E365TC/E364TC MOUNTING HOLES

COOLING: FAN COOLED



SHEET NUMBER
1 OF 1

FACE & ECCENTRICITY RUNOUT = .007 T.I.R. MAX.
IF MOUNTING CLEARANCE DETAILS ARE REQUIRED, CONSULT FACTORY.
MAX PERMISSIBLE SHAFT RUNOUT WHEN MEASURED AT END OF STANDARD SHAFT EXTENSION IS .003" T.I.R.

CUSTOMER IS RESPONSIBLE FOR DETERMINING THAT MOTOR PERFORMANCE IS SUITABLE IN THE APPLICATION.

| | | | |
|---------------------------------|-------------|------------------------------|------------------|
| REV. DESC: UPDATE DRAWING DESC. | | | |
| REV: B | VERSION: 02 | REVISED: 11-33-13 12/20/2019 | TDR: 00000128374 |
| MODEL NO. 617428-136 | | BY: RAGSS1 | |

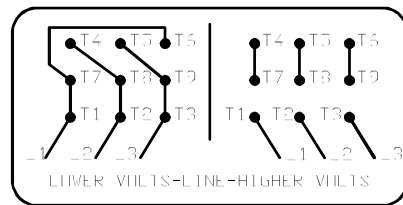
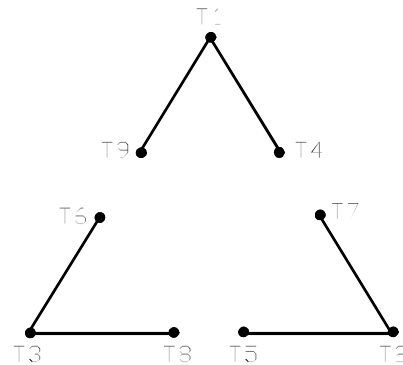
BALDOR

E3654TC TEFC F1 FT C1

617428-136

416820-002

A-C MOTOR
 CONNECTION DIAGRAM
 STANDARD 9 LEAD DELTA-CONNECTED



(N.P. 1575-B)

416820-002

| | | |
|---|------------------------------|-------------------|
| REV. DESC: FONT CHANGE FOR PDF SEARCHABLE | | |
| REV. LTR: A | VERSION: 01 | TDR: 000001009382 |
| FILE: \MGA\00000\661 | REVISED: 02:46:19 02/13/2020 | BY: MGHMTT |
| MTL: - | © □ | |

BALDOR - RELIANCE®

CONN DIAG - STANDARD 9 LEAD, DELTA-CONNECTED

SH 1 of 1