

BALDOR® • RELIANCE 

Product Information Packet

CEM3120T

1.5HP,3490RPM,3PH,60HZ,143TC,3518M,OPSB

Part Detail							
Revision:	-	Status:	PRD/A	Change #:		Proprietary:	No
Type:	AC	Elec. Spec:	35WGM761	CD Diagram:	CD0005	Mfg Plant:	
Mech. Spec:		Layout:	35LYBB102	Poles:	02	Created Date:	03-09-2020
Base:		Eff. Date:	03-11-2020	Leads:	9#18		

Specs			
Catalog Number:	CEM3120T	Feedback Device:	NO FEEDBACK
Enclosure:	OPSB	Heater Indicator:	No Heater
Frame:	143TC	Insulation Class:	F
Frame Material:	Steel	Inverter Code:	Inverter Ready
Output @ Frequency:	1.500 HP @ 60 HZ	IP Rating:	NONE
Synchronous Speed @ Frequency:	3600 RPM @ 60 HZ	KVA Code:	L
Voltage @ Frequency:	460.0 V @ 60 HZ	Lifting Lugs:	No Lifting Lugs
	230.0 V @ 60 HZ	Locked Bearing Indicator:	Locked Bearing
XP Class and Group:	None	Motor Lead Termination:	Flying Leads
XP Division:	Not Applicable	Motor Type:	3518M
Agency Approvals:	CSA	Mounting Arrangement:	F1
	CSA EEV	Power Factor:	83
	UR	Product Family:	General Purpose
Auxillary Box:	No Auxillary Box	Pulley Face Code:	C-Face
Auxillary Box Lead Termination:	None	Rodent Screen:	None
Base Indicator:	Rigid	Shaft Ground Indicator:	No Shaft Grounding
Bearing Grease Type:	Polyrex EM (-20F +300F)	Shaft Rotation:	Reversible
Blower:	None	Speed Code:	Single Speed

Current @ Voltage:	2.000 A @ 460.0 V	Motor Standards:	NEMA
	4.000 A @ 230.0 V	Starting Method:	Direct on line
Design Code:	B	Thermal Device - Bearing:	None
Drip Cover:	No Drip Cover	Thermal Device - Winding:	None
Duty Rating:	CONT	Vibration Sensor Indicator:	No Vibration Sensor
Electrically Isolated Bearing:	Not Electrically Isolated	Winding Thermal 1:	None
		Winding Thermal 2:	None

Nameplate NP1259L										
CAT.NO.	CEM3120T									
SPEC.	35-0000-0671									
HP	1.5									
VOLTS	230/460									
AMP	4/2									
RPM	3490									
FRAME	143TC				HZ	60			PH	3
SER.F.	1.15		CODE	L	DES	B		CL	F	
NEMA-NOM-EFF	84		PF	83						
RATING	40C AMB-CONT									
CC	010A				USABLE AT 208V					
DE	6205			ODE	6203					
ENCL	OPSB		SN							

Parts List		
Part Number	Description	Quantity
SA379818	SA 35-0000-0671	1.000 EA
RA369844	RA 35-0000-0671	1.000 EA
LC0005E01	CONN.DIA./WARNING LABEL (LC0005/LB1119N)	1.000 EA
NP1259L	ALUM SUPER-E UL CSA-EEV CC NEMA PREMIUM	1.000 EA
85XU0407S04	4X1/4 U DRIVE PIN STAINLESS	2.000 EA
MN416A01	TAG-INSTAL-MAINT no wire (2100/bx) 4/22	1.000 EA
MJ1000A02	GREASE, MOBIL POLYREX EM - 124047	0.050 LB
HA3100A14	THRUBOLT 10-32 X 7.875	4.000 EA
35EP3209A00	MASTER ODE,203 BRG,GRSR	1.000 EA
HW5100A03	WAVY WASHER (W1543-017)	1.000 EA
HW4500A01	1641B(ALEMITE)400 UNIV, GREASE FITT	1.000 EA
35EP3402B00	MASTER DE,205 BRG,OPEN,W/GREASER	1.000 EA
51XN1032A20	10-32 X 1 1/4 HX WS SL SR	2.000 EA
HW4500A01	1641B(ALEMITE)400 UNIV, GREASE FITT	1.000 EA
35CB3009	35 CB W/1.09 DIA. LEAD HOLE @ 6:	1.000 EA
51XB1016A07	10-16 X 7/16 HXWSSLD SERTYB	2.000 EA
11XW1032G06	10-32 X .38, TAPTITE II, HEX WSHR SLTD U	1.000 EA
35CB4521	35 LIPPED CB LID (GALV & PHOSPH)	1.000 EA
51XW0832A07	8-32 X .44, TAPTITE II, HEX WSHR SLTD SE	4.000 EA
NS2512A01	INSULATOR, CONDUIT BOX X	1.000 EA
35AD2005B01	BAFFLE PLATE,MOD 35-SLTD BAND MTR TDR	1.000 EA
35AD2005B01	BAFFLE PLATE,MOD 35-SLTD BAND MTR TDR	1.000 EA
MG1000Y03	MUNSELL 2.53Y 6.70/ 4.60, GLOSS 20,	0.022 GA
36PA1000	PKG GRP, PRINT PK1016A06	1.000 EA

Parts List (continued)		
Part Number	Description	Quantity
35PA1066	PKG GRP, PRINT PK1008A06	1.000 EA
HW2501D13	KEY, 3/16 SQ X 1.375	1.000 EA
HA7000A01	KEY RETAINER 7/8" DIA SHAFT	1.000 EA
FE-0000001	ZRTG FE ASSEMBLY	1.000 EA
PE-0000001	ZRTG PE ASSEMBLY	1.000 EA

AC Induction Motor Performance Data

Record # 53126

Typical performance - not guaranteed values

Winding: 35WGM761-R007		Type: 3518M		Enclosure: OPSB	
Nameplate Data			460 V, 60 Hz: High Voltage Connection		
Rated Output (HP)	1.5	Full Load Torque	2.26 LB-FT		
Volts	230/460	Start Configuration	direct on line		
Full Load Amps	4/2	Breakdown Torque	9.32 LB-FT		
R.P.M.	3490	Pull-up Torque	4.18 LB-FT		
Hz	60 Phase	Locked-rotor Torque	6.79 LB-FT		
NEMA Design Code	B	Starting Current	17.2 A		
Service Factor (S.F.)	1.15	No-load Current	1.05 A		
NEMA Nom. Eff.	84	Line-line Res. @ 25°C	12.7 Ω		
Rating - Duty	40C AMB-CONT	Temp. Rise @ Rated Load	24°C		
S.F. Amps		Temp. Rise @ S.F. Load	28°C		
		Locked-rotor Power Factor	64		
		Rotor inertia	0.0493 LB-FT ²		

Load Characteristics 460 V, 60 Hz, 1.5 HP

% of Rated Load	25	50	75	100	125	150	S.F.
Power Factor	43	64	77	83	87	89	85
Efficiency	73.9	82.4	85.1	85.1	84.3	83.1	84.6
Speed	3574	3550	3524	3496	3465	3430	3477
Line amperes	1.14	1.35	1.63	1.99	2.41	2.84	2.24

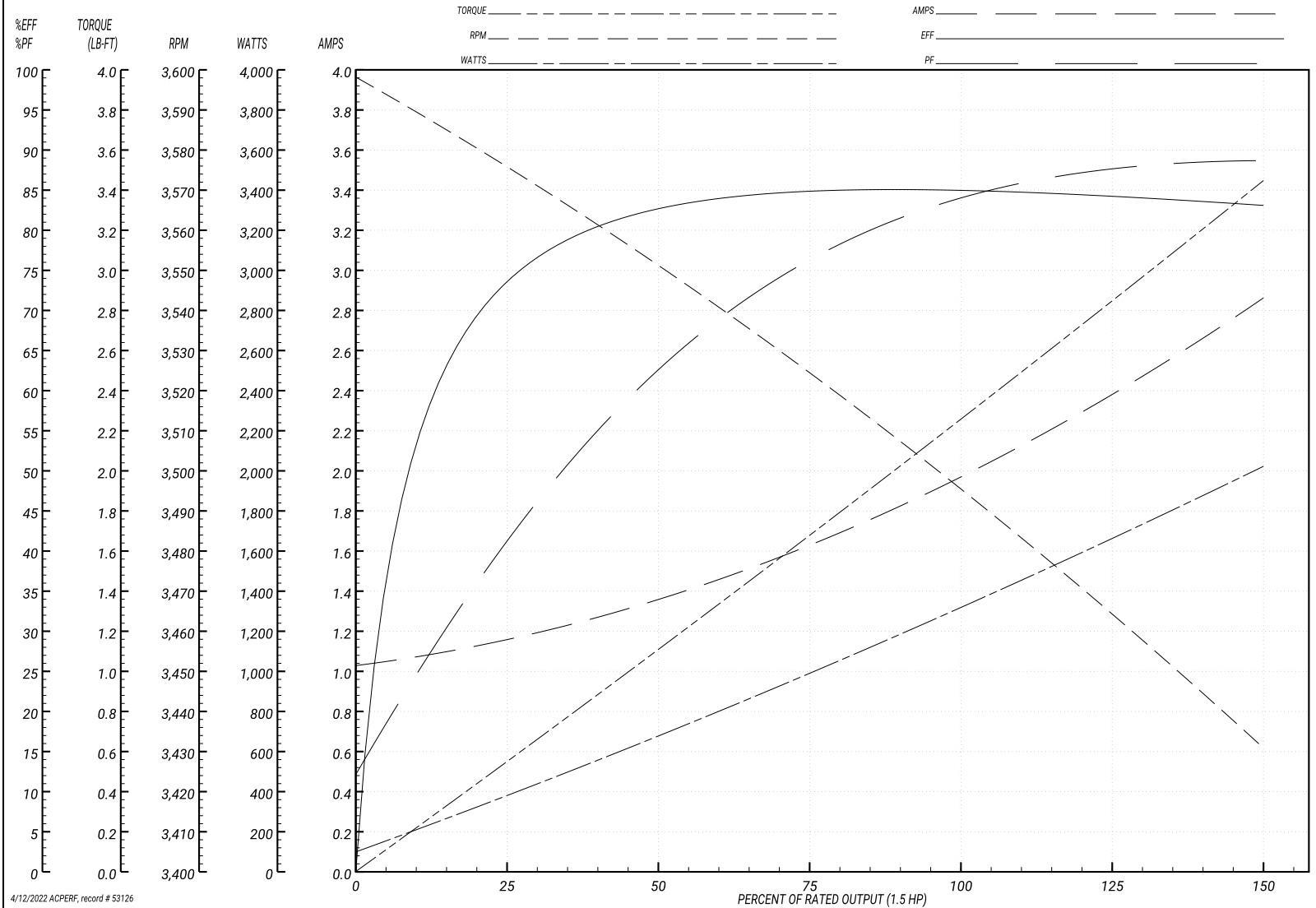
Performance Graph at 460V, 60Hz, 1.5HP Typical performance - Not guaranteed values

BALDOR ELECTRIC COMPANY

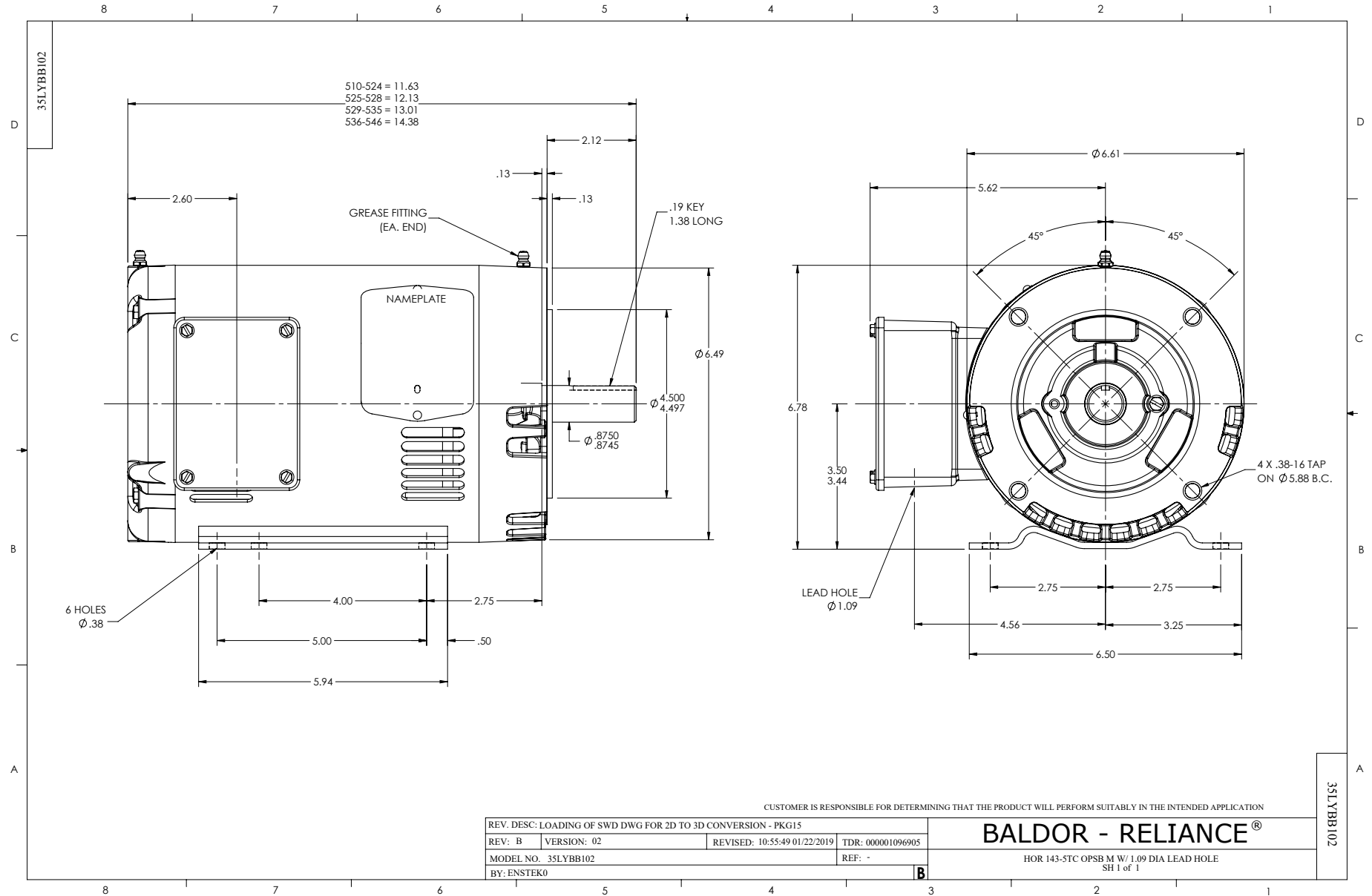
WINDING # 35WGM761

Typical performance - not guaranteed values.

1.5 HP 3 PH 60 HZ 3490 RPM 460 V 3518M
 TORQUES(LB-FT): PO=9.32 PU=4.18 LR=6.79 LRA=17.2



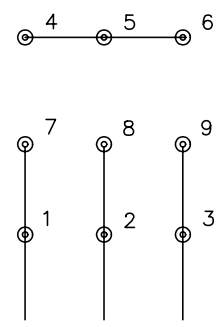
4/12/2022 ACPERF, record # 53126



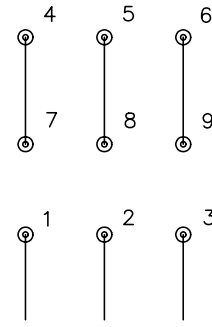
CD0005



LOW VOLTAGE
(2Y)



HIGH VOLTAGE
(1Y)



NOTES:

1. INTERCHANGE ANY TWO LINE LEADS TO REVERSE ROTATION.
2. OPTIONAL THERMOSTATS ARE PROVIDED WHEN SPECIFIED.
3. ACTUAL NUMBER OF INTERNAL PARALLEL CIRCUITS MAY BE A MULTIPLE OF THOSE SHOWN ABOVE.
4. LEAD COLORS ARE OPTIONAL. LEADS MUST ALWAYS BE NUMBERED AS SHOWN.

REV. DESC: REVISE TO SHOW OPTIONAL COLORS			
REV. LTR: E	BY: JLP	REVISED: 01/19/99 10:15	TDR: 0171435
90000		FILE: AAA00005140	MDL: -
		MTL: -	

BALDOR ELECTRIC Co.

3PH, DV, 9 LEADS

CD0005

Marketing maintained PDF of MN416:

<http://www.baldor.com/support/Literature/Load.ashx/MN416?ManNumber=MN416>