

**BALDOR® • RELIANCE** 

**Product Information Packet**

**CXM050342**

**.33//.25HP,1750//1450RPM,3PH,60//50HZ,56**

Part Detail							
Revision:	A	Status:	PRD/A	Change #:		Proprietary:	No
Type:	AC	Elec. Spec:	35WGN563	CD Diagram:	CD0005	Mfg Plant:	
Mech. Spec:		Layout:	35LYE2098	Poles:	04	Created Date:	02-08-2021
Base:		Eff. Date:	01-28-2022	Leads:	9#18		

Specs			
Catalog Number:	CXM050342	Duty Rating:	CONT
Enclosure:	XPFC	Electrically Isolated Bearing:	Not Electrically Isolated
Frame:	56C	Feedback Device:	NO FEEDBACK
Frame Material:	Steel	Heater Indicator:	No Heater
Output @ Frequency:	.330 HP @ 60 HZ	Insulation Class:	F
	.250 HP @ 50 HZ	Inverter Code:	Inverter Duty
Synchronous Speed @ Frequency:	1800 RPM @ 60 HZ	IP Rating:	NONE
Voltage @ Frequency:	190.0 V @ 50 HZ	KVA Code:	M
	460.0 V @ 60 HZ	Lifting Lugs:	No Lifting Lugs
	230.0 V @ 60 HZ	Locked Bearing Indicator:	Locked Bearing
	380.0 V @ 50 HZ	Motor Lead Termination:	Flying Leads
XP Class and Group:	CLI GP D; CLII GP F,G	Motor Type:	3512M
XP Division:	Division I	Mounting Arrangement:	F1
Agency Approvals:	UR	Power Factor:	70
	CSA EEV	Product Family:	General Purpose
	CSA	Pulley Face Code:	C-Face
Auxillary Box:	No Auxillary Box	Rodent Screen:	None
Auxillary Box Lead Termination:	None	Shaft Ground Indicator:	No Shaft Grounding

<b>Base Indicator:</b>	Rigid	<b>Shaft Rotation:</b>	Reversible
<b>Bearing Grease Type:</b>	Polyrex EM (-20F +300F)	<b>Speed Code:</b>	Single Speed
<b>Blower:</b>	None	<b>Motor Standards:</b>	NEMA
<b>Constant Torque Speed Range:</b>	6	<b>Starting Method:</b>	Direct on line
<b>Current @ Voltage:</b>	1.100 A @ 230.0 V	<b>Thermal Device - Bearing:</b>	None
	1.020 A @ 190.0 V	<b>Thermal Device - Winding:</b>	Normally Closed Thermostat
	.550 A @ 460.0 V	<b>Vibration Sensor Indicator:</b>	No Vibration Sensor
	.510 A @ 380.0 V	<b>Winding Thermal 1:</b>	None
<b>Design Code:</b>	B	<b>Winding Thermal 2:</b>	None
<b>Drip Cover:</b>	No Drip Cover	<b>XP Temp Code:</b>	T3C

Nameplate NP0887XPSLEV											
NO.					CC						
S/N					TEMP CODE	T3C					
SPEC.	35-0000-1013				INV.TYPE	PWM					
CAT.NO.	CXM050342				C HP FR	60		C HP TO	90		
HP	.33//.25				CT HZ FROM	6		CT HZ TO	60		
VOLTS	230/460//190/380				VT HZ FROM	6		VT HZ TO	60		
AMPS	1.1/.55//1.02/.51				MAG CUR	.8/.4					
RPM	1750//1450				MX RPM	2700					
HZ	60//50		PH	3		CL	F		NOM.EFF.	80	
SER.F.	1.00		DES	B		SL HZ	1.7		WK2	0.07	
FRAME	56C		RATING	40C AMB-CONT							
	NEMA MG-1 PART 5, IP54										
	1.15 SF ON SINE WAVE										

Parts List		
Part Number	Description	Quantity
SA391090	SA 35-0000-1013	1.000 EA
RA381560	RA 35-0000-1013	1.000 EA
LB1119N	WARNING LABEL	1.000 EA
LC0145B01	CONNECTION LABEL	1.000 EA
NP0887XPSLEV	SS XP INV UL CSA-EEV CC CL-I GP-D	1.000 EA
85XU0407S04	4X1/4 U DRIVE PIN STAINLESS	2.000 EA
MN416A01	TAG-INSTAL-MAINT no wire (2100/bx) 4/22	1.000 EA
NP0018F	ALUM UL XP CONDUIT BOX NAMEPLATE	1.000 EA
35FH4005A01SP	IEC FH NO GREASER W/PRIMED	1.000 EA
51XW1032A06	10-32 X .38, TAPTITE II, HEX WSHR SLTD S	3.000 EA
35FN3002A05SP	EXFN, PLASTIC, 6.376 OD, .638 ID	1.000 EA
51XB1214A16	12-14X1.00 HXWSSLD SERTYB	1.000 EA
MJ1000A02	GREASE, MOBIL POLYREX EM - 124047	0.050 LB
HA3104A06	THRUBOLT 5/16-18 X 8.50 OHIO ROD	4.000 EA
XY3118A12	5/16-18 HEX NUT DIRECTIONAL SERRATION	4.000 EA
35EP3700A01SP	FR ENDPLATE, XPFC	1.000 EA
HW5100A03	WAVY WASHER (W1543-017)	1.000 EA
35EP3702A01SP	PU EP-205 BRG-35X-56C-143-5TC	1.000 EA
HA3013A01	1/2-20X5/8 SPL.HX BOLT	2.000 EA
84XN1032J20	SCREW, SOC 10-32 X 1 1/4"BMH4602	2.000 EA
HW3021C06	3/32 DI X .625 PIN (F/S)	2.000 EA
35CB3001A02SP	EXPL PROOF CONDUIT BOX, 3/4"PIPE TAP LEA	1.000 EA
11XW1032G06	10-32 X .38, TAPTITE II, HEX WSHR SLTD U	1.000 EA
HW3001B01	BRASS CUP WASHER, FOR #10 SCREW	1.000 EA

<b>Parts List (continued)</b>		
<b>Part Number</b>	<b>Description</b>	<b>Quantity</b>
35CB3500A01SP	CONDUIT BOX LID, MACH	1.000 EA
51XN2520A16	SCREW, HEX WS SLT, ZN, 1/4-20 X 1.00	4.000 EA
MG1500Y02	WILKOPON PRIMER YELLOW	0.022 GA
MG1025G29	WILKOFAST, 789.229, DARK CHARCOAL GRAY	0.022 GA
36PA1000	PKG GRP, PRINT PK1016A06	1.000 EA
HW2501D13	KEY, 3/16 SQ X 1.375	1.000 EA
HA7000A04	KEY RETAINER 0.625 DIA SHAFTS	1.000 EA

**AC Induction Motor Performance Data**

Record # 86679

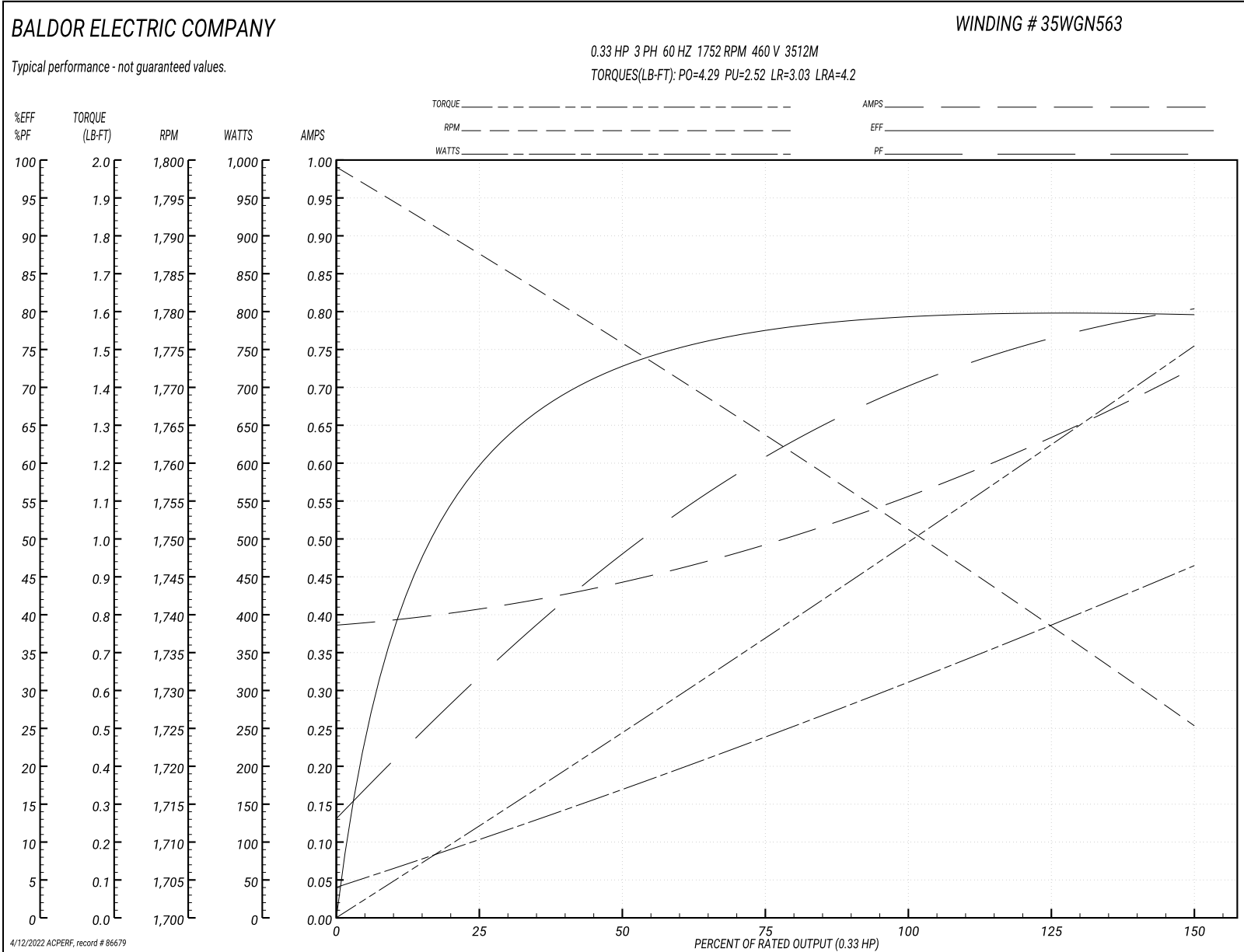
Typical performance - not guaranteed values

<b>Winding: 35WGN563-R007</b>		<b>Type: 3512M</b>		<b>Enclosure: TEFC</b>	
<b>Nameplate Data</b>			<b>460 V, 60 Hz: High Voltage Connection</b>		
<b>Rated Output (HP)</b>	.33//.25		<b>Full Load Torque</b>	0.987 LB-FT	
<b>Volts</b>	230/460//190/380		<b>Start Configuration</b>	direct on line	
<b>Full Load Amps</b>	1.1/.55//1.2/.6		<b>Breakdown Torque</b>	4.29 LB-FT	
<b>R.P.M.</b>	1750//1440		<b>Pull-up Torque</b>	2.52 LB-FT	
<b>Hz</b>	60//50	<b>Phase</b>	3	<b>Locked-rotor Torque</b>	3.03 LB-FT
<b>NEMA Design Code</b>	B	<b>KVA Code</b>	M	<b>Starting Current</b>	4.2 A
<b>Service Factor (S.F.)</b>	1.15		<b>No-load Current</b>	0.388 A	
<b>NEMA Nom. Eff.</b>	80	<b>Power Factor</b>	70	<b>Line-line Res. @ 25°C</b>	51.2 Ω
<b>Rating - Duty</b>	55C AMB-CONT		<b>Temp. Rise @ Rated Load</b>	45°C	
<b>S.F. Amps</b>			<b>Temp. Rise @ S.F. Load</b>	44°C	
			<b>Locked-rotor Power Factor</b>	68	
			<b>Rotor inertia</b>	0.0709 lb-ft <sup>2</sup>	

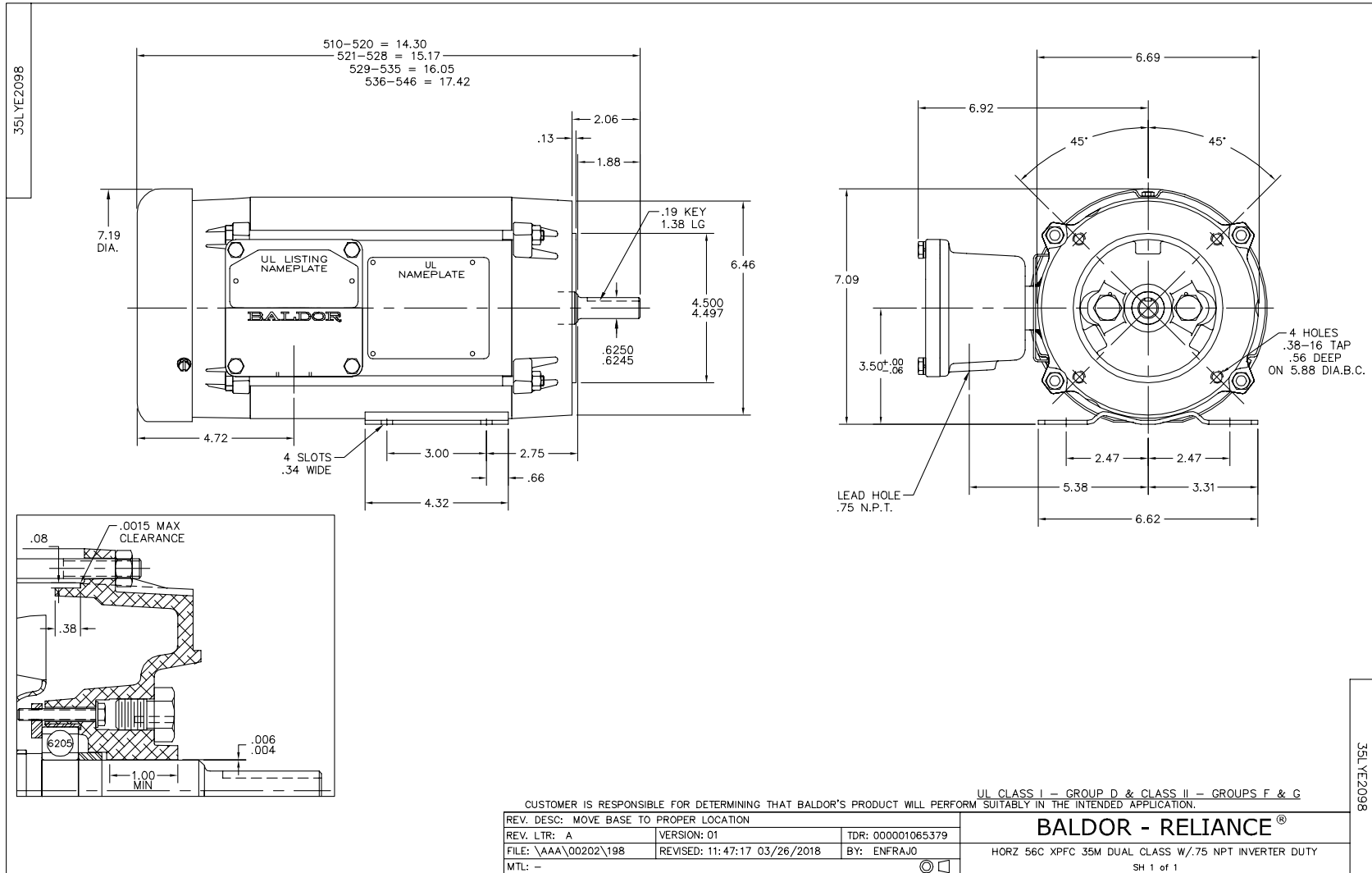
**Load Characteristics 460 V, 60 Hz, 0.33 HP**

<b>% of Rated Load</b>	<b>25</b>	<b>50</b>	<b>75</b>	<b>100</b>	<b>125</b>	<b>150</b>	<b>S.F.</b>
<b>Power Factor</b>	32	48	61	70	76	81	75
<b>Efficiency</b>	59.7	72.4	77.5	79.5	79.7	79.5	82.2
<b>Speed</b>	1786	1776	1764	1752	1739	1725	1734
<b>Line amperes</b>	0.406	0.441	0.492	0.555	0.636	0.723	0.578

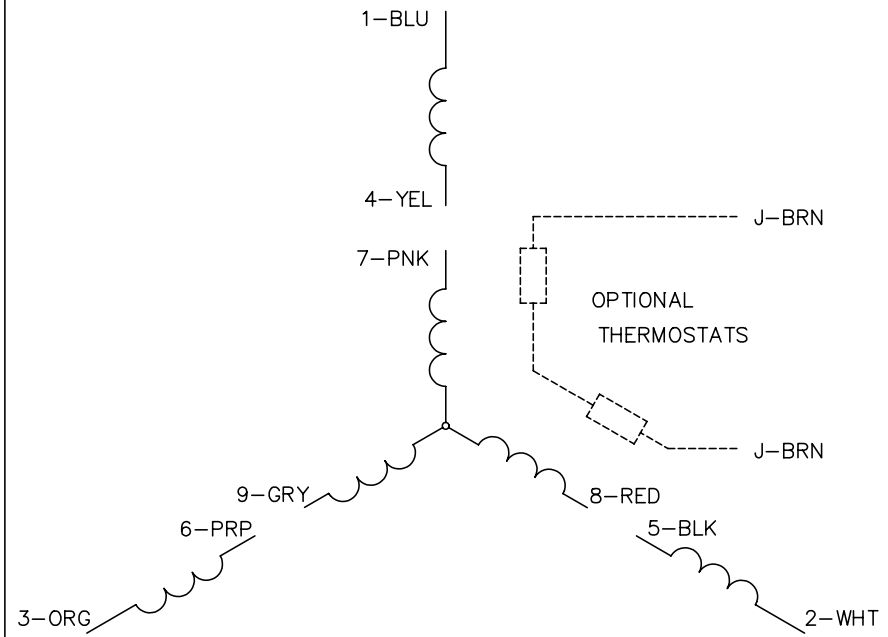
Performance Graph at 460V, 60Hz, 0.33HP Typical performance - Not guaranteed values



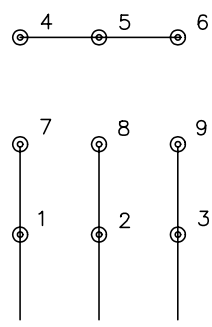




CD0005

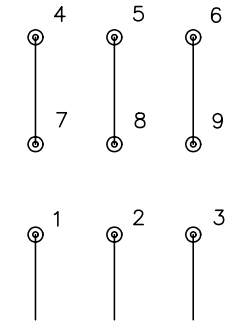


LOW VOLTAGE (2Y)



LINE

HIGH VOLTAGE (1Y)



LINE

NOTES:

1. INTERCHANGE ANY TWO LINE LEADS TO REVERSE ROTATION.
2. OPTIONAL THERMOSTATS ARE PROVIDED WHEN SPECIFIED.
3. ACTUAL NUMBER OF INTERNAL PARALLEL CIRCUITS MAY BE A MULTIPLE OF THOSE SHOWN ABOVE.
4. LEAD COLORS ARE OPTIONAL. LEADS MUST ALWAYS BE NUMBERED AS SHOWN.

REV. DESC: REVISE TO SHOW OPTIONAL COLORS			
REV. LTR: E	BY: JLP	REVISED: 01/19/99 10:15	TDR: 0171435
900000		FILE: AAA00005140	MDL: -
		MTL: -	

**BALDOR ELECTRIC Co.**

3PH, DV, 9 LEADS

CD0005

Marketing maintained PDF of MN416:

<http://www.baldor.com/support/Literature/Load.ashx/MN416?ManNumber=MN416>