

BALDOR® • RELIANCE 

Product Information Packet

CXM050742

.75//.5HP,1750//1460RPM,3PH,60//50HZ,56C

Part Detail							
Revision:	A	Status:	PRD/A	Change #:		Proprietary:	No
Type:	AC	Elec. Spec:	35WGP667	CD Diagram:	CD0005	Mfg Plant:	
Mech. Spec:		Layout:	35LYE2098	Poles:	04	Created Date:	02-09-2021
Base:		Eff. Date:	01-28-2022	Leads:	9#18		

Specs			
Catalog Number:	CXM050742	Drip Cover:	No Drip Cover
Enclosure:	XPFC	Duty Rating:	CONT
Frame:	56C	Electrically Isolated Bearing:	Not Electrically Isolated
Frame Material:	Steel	Feedback Device:	NO FEEDBACK
Output @ Frequency:	.750 HP @ 60 HZ	Heater Indicator:	No Heater
	.500 HP @ 50 HZ	Insulation Class:	F
Synchronous Speed @ Frequency:	1800 RPM @ 60 HZ	Inverter Code:	Inverter Duty
Voltage @ Frequency:	190.0 V @ 50 HZ	IP Rating:	NONE
	230.0 V @ 60 HZ	KVA Code:	M
	380.0 V @ 50 HZ	Lifting Lugs:	No Lifting Lugs
	460.0 V @ 60 HZ	Locked Bearing Indicator:	Locked Bearing
XP Class and Group:	CLI GP D; CLII GP F,G	Motor Lead Termination:	Flying Leads
XP Division:	Division I	Motor Type:	3516M
Agency Approvals:	UR	Mounting Arrangement:	F1
	CSA EEV	Power Factor:	73
	CSA	Product Family:	General Purpose
Auxillary Box:	No Auxillary Box	Pulley Face Code:	C-Face
Auxillary Box Lead Termination:	None	Rodent Screen:	None

Base Indicator:	Rigid	Shaft Ground Indicator:	No Shaft Grounding
Bearing Grease Type:	Polyrex EM (-20F +300F)	Shaft Rotation:	Reversible
Blower:	None	Speed Code:	Single Speed
Constant Torque Speed Range:	6	Motor Standards:	NEMA
Current @ Voltage:	2.480 A @ 208.0 V	Starting Method:	Direct on line
	2.200 A @ 230.0 V	Thermal Device - Bearing:	None
	2.000 A @ 190.0 V	Thermal Device - Winding:	Normally Closed Thermostat
	1.100 A @ 460.0 V	Vibration Sensor Indicator:	No Vibration Sensor
	1.000 A @ 380.0 V	Winding Thermal 1:	None
Design Code:	B	Winding Thermal 2:	None
		XP Temp Code:	T3C

Nameplate NP0887XPSLEV											
NO.					CC						
S/N					TEMP CODE	T3C					
SPEC.	35-0000-1012				INV.TYPE	PWM					
CAT.NO.	CXM050742				C HP FR	60		C HP TO	90		
HP	.75//.5				CT HZ FROM	6		CT HZ TO	60		
VOLTS	230/460//190/380				VT HZ FROM	6		VT HZ TO	60		
AMPS	2.2/1.1//2/1				MAG CUR	1.5/.75					
RPM	1750//1460				MX RPM	2700					
HZ	60//50		PH	3		CL	F		NOM.EFF.	84	
SER.F.	1.00		DES	B		SL HZ	1.7		WK2	0.946	
FRAME	56C		RATING	40C AMB-CONT							
	NEMA MG-1 PART 5, IP54										
	1.15 SF ON SINE WAVE										

Parts List		
Part Number	Description	Quantity
SA391177	SA 35-0000-1012	1.000 EA
RA381646	RA 35-0000-1012	1.000 EA
LB1119N	WARNING LABEL	1.000 EA
LC0145B01	CONNECTION LABEL	1.000 EA
NP0887XPSLEV	SS XP INV UL CSA-EEV CC CL-I GP-D	1.000 EA
85XU0407S04	4X1/4 U DRIVE PIN STAINLESS	2.000 EA
85XU0407S04	4X1/4 U DRIVE PIN STAINLESS	4.000 EA
MN416A01	TAG-INSTAL-MAINT no wire (2100/bx) 4/22	1.000 EA
NP0018F	ALUM UL XP CONDUIT BOX NAMEPLATE	1.000 EA
35FH4005A01SP	IEC FH NO GREASER W/PRIMED	1.000 EA
51XW1032A06	10-32 X .38, TAPTITE II, HEX WSHR SLTD S	3.000 EA
35FN3002A05SP	EXFN, PLASTIC, 6.376 OD, .638 ID	1.000 EA
51XB1214A16	12-14X1.00 HXWSSLD SERTYB	1.000 EA
MJ1000A02	GREASE, MOBIL POLYREX EM - 124047	0.050 LB
HA3104A06	THRUBOLT 5/16-18 X 8.50 OHIO ROD	4.000 EA
XY3118A12	5/16-18 HEX NUT DIRECTIONAL SERRATION	4.000 EA
35EP3700A01SP	FR ENDPLATE, XPFC	1.000 EA
HW5100A03	WAVY WASHER (W1543-017)	1.000 EA
35EP3702A01SP	PU EP-205 BRG-35X-56C-143-5TC	1.000 EA
HA3013A01	1/2-20X5/8 SPL.HX BOLT	2.000 EA
84XN1032J20	SCREW, SOC 10-32 X 1 1/4"BMH4602	2.000 EA
HW3021C06	3/32 DI X .625 PIN (F/S)	2.000 EA
35CB3001A02SP	EXPL PROOF CONDUIT BOX, 3/4"PIPE TAP LEA	1.000 EA
11XW1032G06	10-32 X .38, TAPTITE II, HEX WSHR SLTD U	1.000 EA

Parts List (continued)		
Part Number	Description	Quantity
HW3001B01	BRASS CUP WASHER, FOR #10 SCREW	1.000 EA
35CB3500A01SP	CONDUIT BOX LID, MACH	1.000 EA
51XN2520A16	SCREW, HEX WS SLT, ZN, 1/4-20 X 1.00	4.000 EA
MG1500Y02	WILKOPON PRIMER YELLOW	0.022 GA
MG1025G29	WILKOFASST, 789.229, DARK CHARCOAL GRAY	0.022 GA
36PA1000	PKG GRP, PRINT PK1016A06	1.000 EA
HW2501D13	KEY, 3/16 SQ X 1.375	1.000 EA
HA7000A04	KEY RETAINER 0.625 DIA SHAFTS	1.000 EA

AC Induction Motor Performance Data

Record # 86683

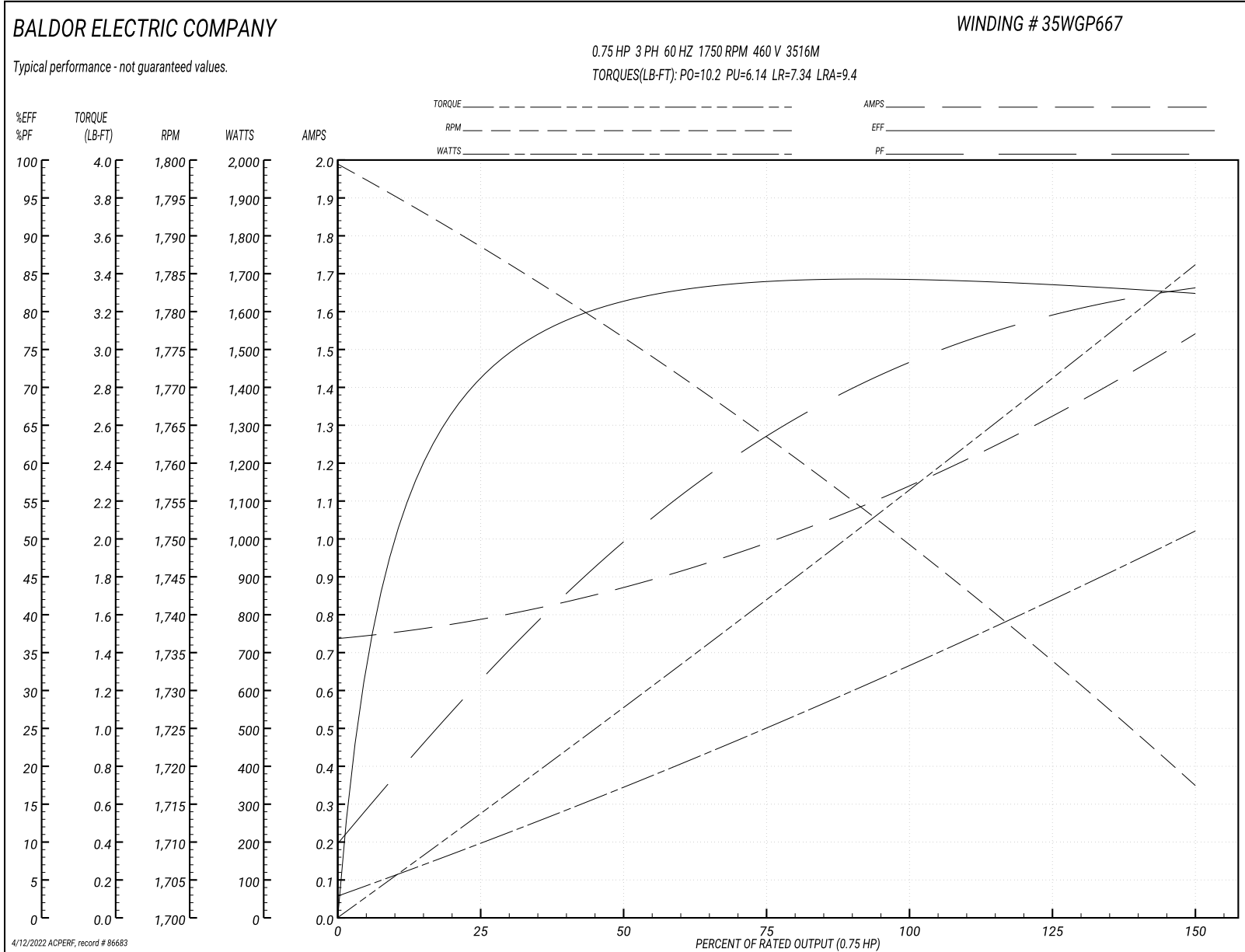
Typical performance - not guaranteed values

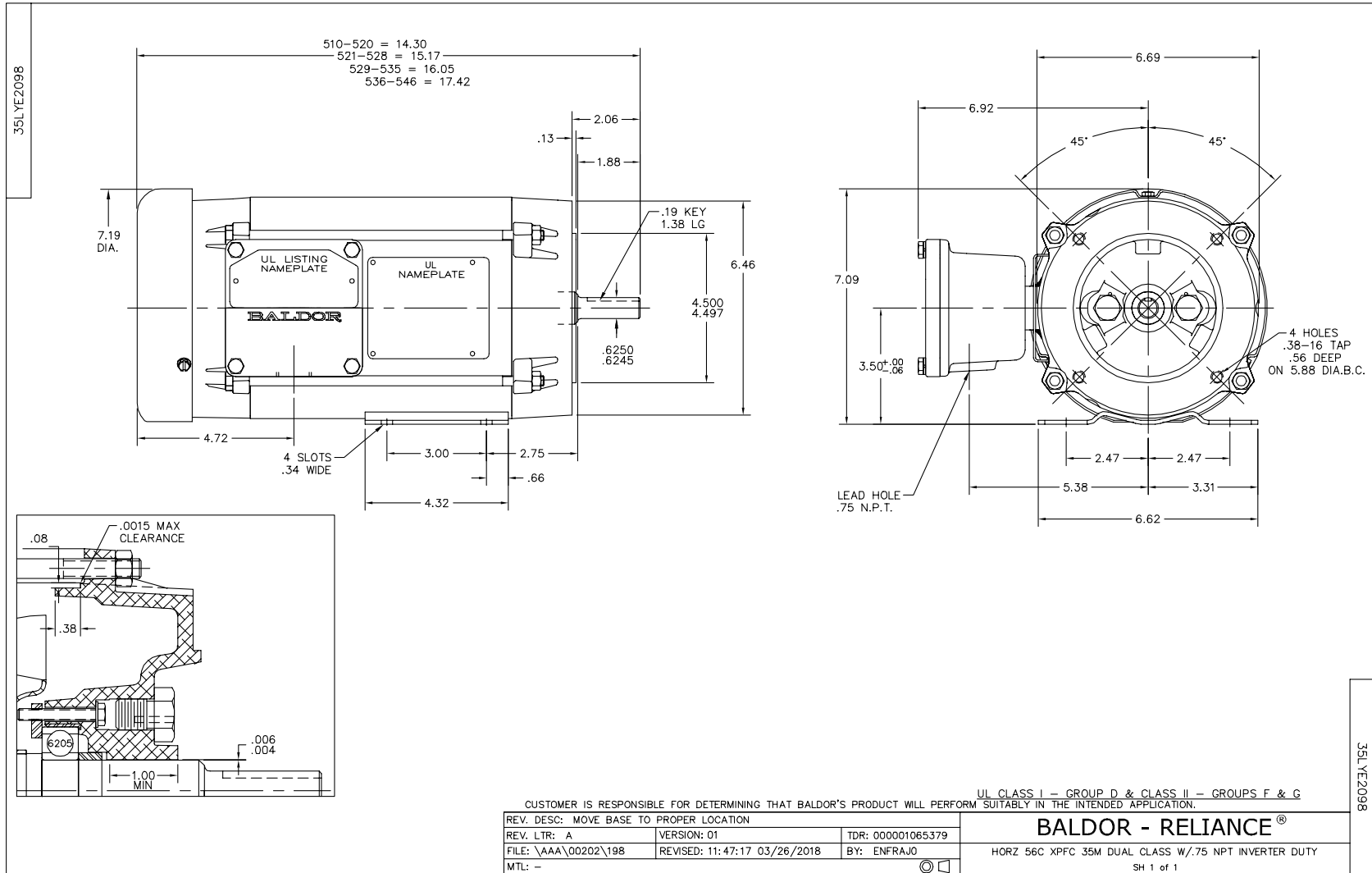
Winding: 35WGP667-R022		Type: 3516M		Enclosure: TEFC	
Nameplate Data			460 V, 60 Hz: High Voltage Connection		
Rated Output (HP)	.75//.5		Full Load Torque	2.23 LB-FT	
Volts	190/380//230/460		Start Configuration	direct on line	
Full Load Amps	2.6/1.3//2.3/1.15		Breakdown Torque	10.2 LB-FT	
R.P.M.	1440//1750		Pull-up Torque	6.14 LB-FT	
Hz	50//60	Phase	3	Locked-rotor Torque	7.34 LB-FT
NEMA Design Code	B	KVA Code	M	Starting Current	9.4 A
Service Factor (S.F.)	1.15		No-load Current	0.743 A	
NEMA Nom. Eff.	84	Power Factor	73	Line-line Res. @ 25°C	22.3 Ω
Rating - Duty	40C AMB-CONT		Temp. Rise @ Rated Load	30°C	
S.F. Amps	3/1.5//2.8-2.6/1.3		Temp. Rise @ S.F. Load	41°C	
			Locked-rotor Power Factor	64.8	
			Rotor inertia	0.0946 lb-ft ²	

Load Characteristics 460 V, 60 Hz, 0.75 HP

% of Rated Load	25	50	75	100	125	150	S.F.
Power Factor	32	49	63	72	79	84	82
Efficiency	69.4	80.4	83.8	84.6	84	82.1	82.3
Speed	1790	1777	1763	1750	1735	1717	1426
Line amperes	0.778	0.863	0.986	1.14	1.32	1.54	1.44

Performance Graph at 460V, 60Hz, 0.75HP Typical performance - Not guaranteed values





CD0005



LOW VOLTAGE
(2Y)



LINE

HIGH VOLTAGE
(1Y)



LINE

NOTES:

1. INTERCHANGE ANY TWO LINE LEADS TO REVERSE ROTATION.
2. OPTIONAL THERMOSTATS ARE PROVIDED WHEN SPECIFIED.
3. ACTUAL NUMBER OF INTERNAL PARALLEL CIRCUITS MAY BE A MULTIPLE OF THOSE SHOWN ABOVE.
4. LEAD COLORS ARE OPTIONAL. LEADS MUST ALWAYS BE NUMBERED AS SHOWN.

REV. DESC: REVISE TO SHOW OPTIONAL COLORS			
REV. LTR: E	BY: JLP	REVISED: 01/19/99 10:15	TDR: 0171435
900000		FILE: AAA00005140	MDL: -
		MTL: -	

BALDOR ELECTRIC Co.

3PH, DV, 9 LEADS

CD0005

Marketing maintained PDF of MN416:

<http://www.baldor.com/support/Literature/Load.ashx/MN416?ManNumber=MN416>