

BALDOR® • RELIANCE 

Product Information Packet

CXM2522T

20//15HP,3530//2930RPM,3PH,60//50HZ,256T

| Part Detail | | | | | | | |
|-------------|----|-------------|------------|-------------|--------|---------------|------------|
| Revision: | C | Status: | PRD/A | Change #: | | Proprietary: | No |
| Type: | AC | Elec. Spec: | 09WGZ651 | CD Diagram: | CD0180 | Mfg Plant: | |
| Mech. Spec: | | Layout: | 09LYE689 | Poles: | 02 | Created Date: | 02-17-2021 |
| Base: | | Eff. Date: | 12-08-2021 | Leads: | 9#10 | | |

| Specs | | | |
|---------------------------------|-----------------------|--------------------------------|---------------------------|
| Catalog Number: | CXM25222T | Duty Rating: | CONT |
| Enclosure: | XPFC | Electrically Isolated Bearing: | Not Electrically Isolated |
| Frame: | 256TC | Feedback Device: | NO FEEDBACK |
| Frame Material: | Iron | Heater Indicator: | No Heater |
| Output @ Frequency: | 20.000 HP @ 60 HZ | Insulation Class: | F |
| | 15.000 HP @ 50 HZ | Inverter Code: | Inverter Duty |
| Synchronous Speed @ Frequency: | 3600 RPM @ 60 HZ | IP Rating: | NONE |
| Voltage @ Frequency: | 190.0 V @ 50 HZ | KVA Code: | H |
| | 460.0 V @ 60 HZ | Lifting Lugs: | Standard Lifting Lugs |
| | 230.0 V @ 60 HZ | Locked Bearing Indicator: | Locked Bearing |
| | 380.0 V @ 50 HZ | Motor Lead Termination: | Flying Leads |
| XP Class and Group: | CLI GP D; CLII GP F,G | Motor Type: | 0950M |
| XP Division: | Division I | Mounting Arrangement: | F1 |
| Agency Approvals: | UR | Power Factor: | 91 |
| | CSA EEV | Product Family: | General Purpose |
| | CSA | Pulley Face Code: | C-Face |
| Auxillary Box: | No Auxillary Box | Rodent Screen: | None |
| Auxillary Box Lead Termination: | None | Shaft Ground Indicator: | No Shaft Grounding |

| | | | |
|-------------------------------------|-------------------------|------------------------------------|----------------------------|
| Base Indicator: | Rigid | Shaft Rotation: | Reversible |
| Bearing Grease Type: | Polyrex EM (-20F +300F) | Speed Code: | Single Speed |
| Blower: | None | Motor Standards: | NEMA |
| Constant Torque Speed Range: | 6 | Starting Method: | Direct on line |
| Current @ Voltage: | 44.000 A @ 230.0 V | Thermal Device - Bearing: | None |
| | 40.000 A @ 190.0 V | Thermal Device - Winding: | Normally Closed Thermostat |
| | 22.000 A @ 460.0 V | Vibration Sensor Indicator: | No Vibration Sensor |
| | 20.000 A @ 380.0 V | Winding Thermal 1: | None |
| Design Code: | A | Winding Thermal 2: | None |
| Drip Cover: | No Drip Cover | XP Temp Code: | T3C |

| | | | | | | | | | |
|-------------------------------|------------------------|--|---------------|--------------|-------------------|----------|--|-----------------|------|
| Nameplate NP0887XPSLEV | | | | | | | | | |
| NO. | | | | | CC | 010A | | | |
| S/N | | | | | TEMP CODE | T3C | | | |
| SPEC. | 09-0000-2930 | | | | INV.TYPE | PWM | | | |
| CAT.NO. | CXM25222T | | | | C HP FR | 60 | | C HP TO | 90 |
| HP | 20//15 | | | | CT HZ FROM | 6 | | CT HZ TO | 60 |
| VOLTS | 230/460//190/380 | | | | VT HZ FROM | 6 | | VT HZ TO | 60 |
| AMPS | 44/22//40/20 | | | | MAG CUR | 10.6/5.3 | | | |
| RPM | 3530//2930 | | | | MX RPM | 5400 | | | |
| HZ | 60//50 | | PH | 3 | CL | F | | | |
| SER.F. | 1.00 | | DES | A | SL HZ | 1.2 | | NOM.EFF. | 91 |
| FRAME | 256TC | | RATING | 40C AMB-CONT | | | | WK2 | 1.28 |
| | NEMA MG-1 PART 5, IP54 | | | | | | | | |
| | 1.15 SF ON SINE WAVE | | | | | | | | |
| | | | | | | | | | |

| Parts List | | |
|--------------|--|----------|
| Part Number | Description | Quantity |
| SA391194 | SA 09-0000-2930 | 1.000 EA |
| RA381664 | RA 09-0000-2930 | 1.000 EA |
| LB1115N | LABEL,LIFTING DEVICE (ON ROLLS) | 1.000 EA |
| LB1119N | WARNING LABEL | 1.000 EA |
| LC0005E01 | SPL CONN.DIA./WARN.LABEL(LC0005/LB1119) | 1.000 EA |
| NP0887XPSLEV | SS XP INV UL CSA-EEV CC CL-I GP-D | 1.000 EA |
| 85XU0407S04 | 4X1/4 U DRIVE PIN STAINLESS | 2.000 EA |
| 85XU0407S04 | 4X1/4 U DRIVE PIN STAINLESS | 4.000 EA |
| MN416A01 | TAG-INSTAL-MAINT no wire (2100/bx) 4/22 | 1.000 EA |
| LB1073 | ALUM XP CAUTION LABEL | 1.000 EA |
| HW3201A01 | 1/2-13 EYEBOLT | 1.000 EA |
| HW1002A63 | WASHER, 5/8 HI-COLLAR SPRLCKWASHER | 1.000 EA |
| 09FH1004A01 | FAN COVER, MACH | 1.000 EA |
| HW1001A25 | LOCKWASHER 1/4, ZINC PLT .493 OD, .255 I | 3.000 EA |
| 10XN2520K14 | 1/4-20 X .88 HEX GRD 5 (20001) | 3.000 EA |
| 37FN3002C02 | EXFN, PLASTIC, 6.00 OD, 1.503 ID | 1.000 EA |
| HW2500A25 | WOODRUFF KEY USA #1008 #BLOW CARBON STEE | 1.000 EA |
| MJ1000A02 | GREASE, MOBIL POLYREX EM - 124047 | 0.080 LB |
| 09EP1700A01 | FR ENDPLATE, MACH | 1.000 EA |
| 10XN3816K28 | 3/8-16 X 1.75 HEX HD CAP SCREW, GRADE 5 | 4.000 EA |
| HW1001A38 | LOCKWASHER 3/8, ZINC PLT .688 OD, .382 I | 4.000 EA |
| HW5100A08 | W3118-035 WVY WSHR (WB) | 1.000 EA |
| HW4500A20 | 1/8NPT SL PIPE PLUG | 1.000 EA |
| HW4500A20 | 1/8NPT SL PIPE PLUG | 1.000 EA |

| Parts List (continued) | | |
|------------------------|--|----------|
| Part Number | Description | Quantity |
| HA2002A05 | SPACER, #208 BRG | 1.000 EA |
| 09EP1708A02 | FACE MTD. ENDPLATE, MACH X-PROOF (NEW DE | 1.000 EA |
| HW1001A38 | LOCKWASHER 3/8, ZINC PLT .688 OD, .382 I | 4.000 EA |
| 10XN3816K28 | 3/8-16 X 1.75 HEX HD CAP SCREW, GRADE 5 | 4.000 EA |
| 10XN2520K36 | 1/4-20 X 2.25" HX HD SCRWGRADE 5, ZINC P | 4.000 EA |
| HW1001A25 | LOCKWASHER 1/4, ZINC PLT .493 OD, .255 I | 4.000 EA |
| HW4500A20 | 1/8NPT SL PIPE PLUG | 1.000 EA |
| HW4500A20 | 1/8NPT SL PIPE PLUG | 1.000 EA |
| 09CB1000A01SP | KOBX, MACH XP W/1.25 NPT | 1.000 EA |
| 10XN3118K16 | 5/16-18 X 1' GRADE #5, STL, ZINC PLATE | 4.000 EA |
| HW1001A31 | LOCKWASHER 5/16, ZINC PLT.591 OD, .319 I | 4.000 EA |
| WD1000B16 | T&B CX70TN OR L70P TERMINAL LUG | 1.000 EA |
| 59XW2520G07 | .25-20X.44,HEX SER WSHR,TAPTITE 2,GREEN | 1.000 EA |
| 09CB1500A01SP | CONDUIT BOX LID, MACH | 1.000 EA |
| 10XN2520K16 | 1/4-20 X 1" HX HD SCRW GRADE 5, ZINC P | 6.000 EA |
| HW1001A25 | LOCKWASHER 1/4, ZINC PLT .493 OD, .255 I | 6.000 EA |
| MG1025G29 | WILKOFASST, 789.229, DARK CHARCOAL GRAY | 0.070 GA |
| 40PA1005 | PACKAGING GROUP, 09 STD | 1.000 EA |
| HW2501G25 | KEY, 3/8 SQ X 2.875 | 1.000 EA |
| MJ5000A09 | EFI KIT #1578 (400 ML CARTRIDGE OF EFI | 0.031 EA |

AC Induction Motor Performance Data

Record # 31502

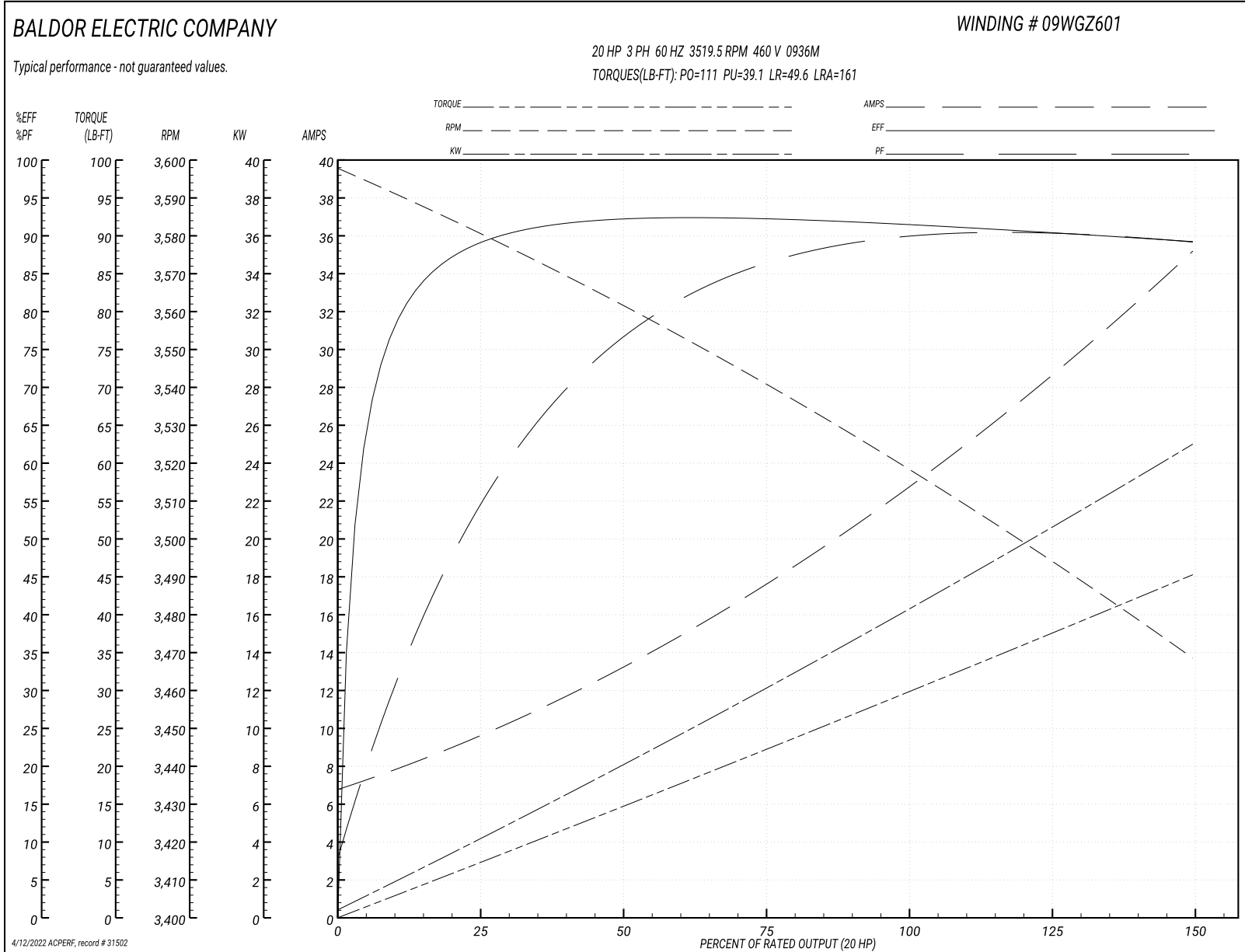
Typical performance - not guaranteed values

| Winding: 09WGZ601-R003 | | Type: 0936M | | Enclosure: TEFC | |
|-------------------------------|------------------|---------------------|--|------------------------------|------------|
| Nameplate Data | | | 460 V, 60 Hz: High Voltage Connection | | |
| Rated Output (HP) | 20//15 | | Full Load Torque | 29.6 LB-FT | |
| Volts | 230/460//190/380 | | Start Configuration | direct on line | |
| Full Load Amps | 46/23//42/21 | | Breakdown Torque | 111 LB-FT | |
| R.P.M. | 3520//2930 | | Pull-up Torque | 39.1 LB-FT | |
| Hz | 60//50 | Phase | 3 | Locked-rotor Torque | 49.6 LB-FT |
| NEMA Design Code | B | KVA Code | H | Starting Current | 161 A |
| Service Factor (S.F.) | 1.15 | | No-load Current | 7.17 A | |
| NEMA Nom. Eff. | 91 | Power Factor | 89 | Line-line Res. @ 25°C | 0.47592 Ω |
| Rating - Duty | 40C AMB-CONT | | Temp. Rise @ Rated Load | 76°C | |
| S.F. Amps | | | Temp. Rise @ S.F. Load | 95°C | |
| | | | Locked-rotor Power Factor | 29 | |
| | | | Rotor inertia | 0.92 LB-FT ² | |

Load Characteristics 460 V, 60 Hz, 20 HP

| % of Rated Load | 25 | 50 | 75 | 100 | 125 | 150 | S.F. |
|------------------------|-----------|-----------|-----------|------------|------------|------------|-------------|
| Power Factor | 58 | 78 | 86 | 89 | 90 | 90 | 90 |
| Efficiency | 88.9 | 92.2 | 92.4 | 91.7 | 90.7 | 89.2 | 91.1 |
| Speed | 3579.6 | 3561.5 | 3541.3 | 3519.5 | 3495.4 | 3467.8 | 3505 |
| Line amperes | 9 | 13 | 17.7 | 22.9 | 28.6 | 35 | 26.3 |

Performance Graph at 460V, 60Hz, 20.0HP Typical performance - Not guaranteed values



AC Induction Motor Performance Data

Record # 31503

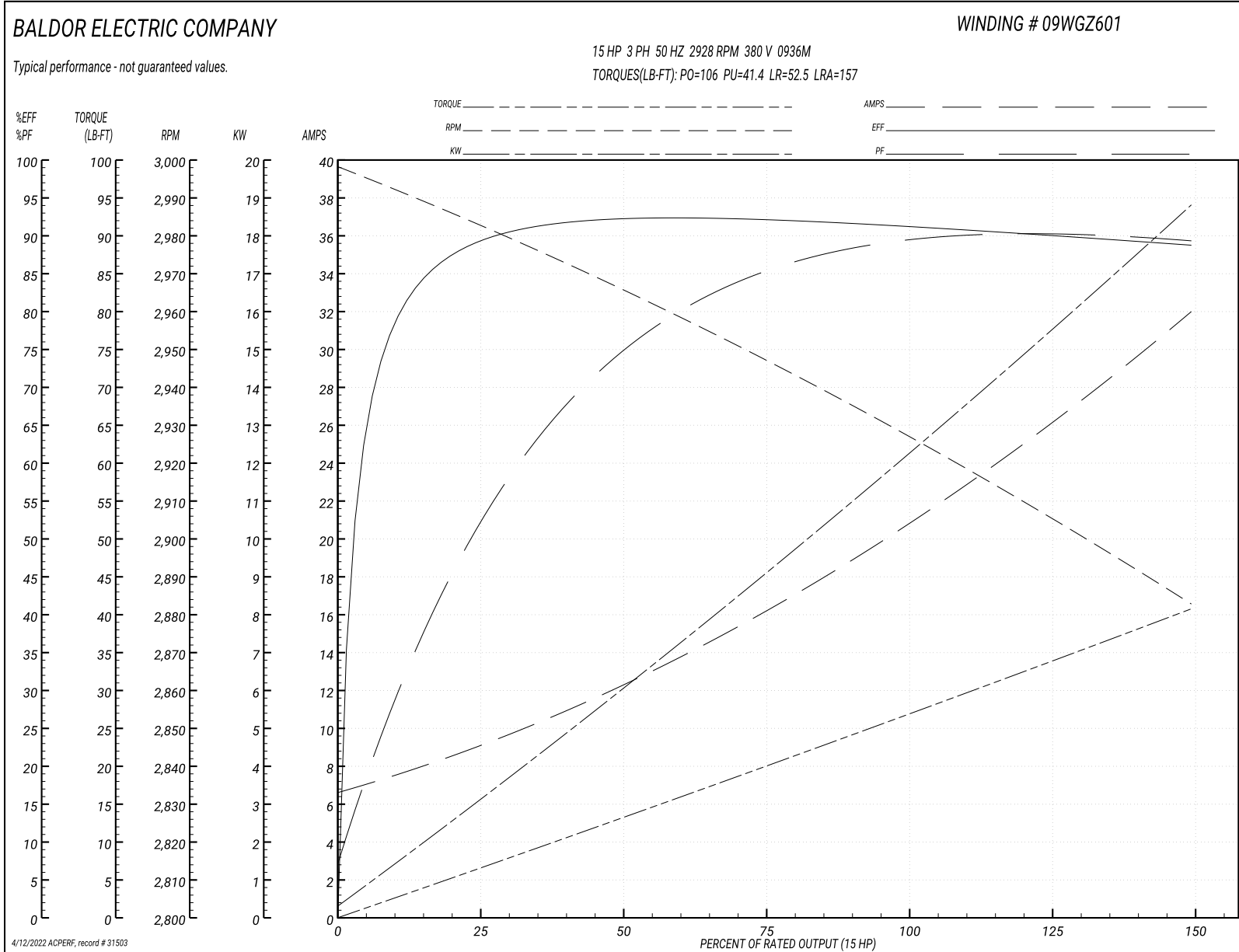
Typical performance - not guaranteed values

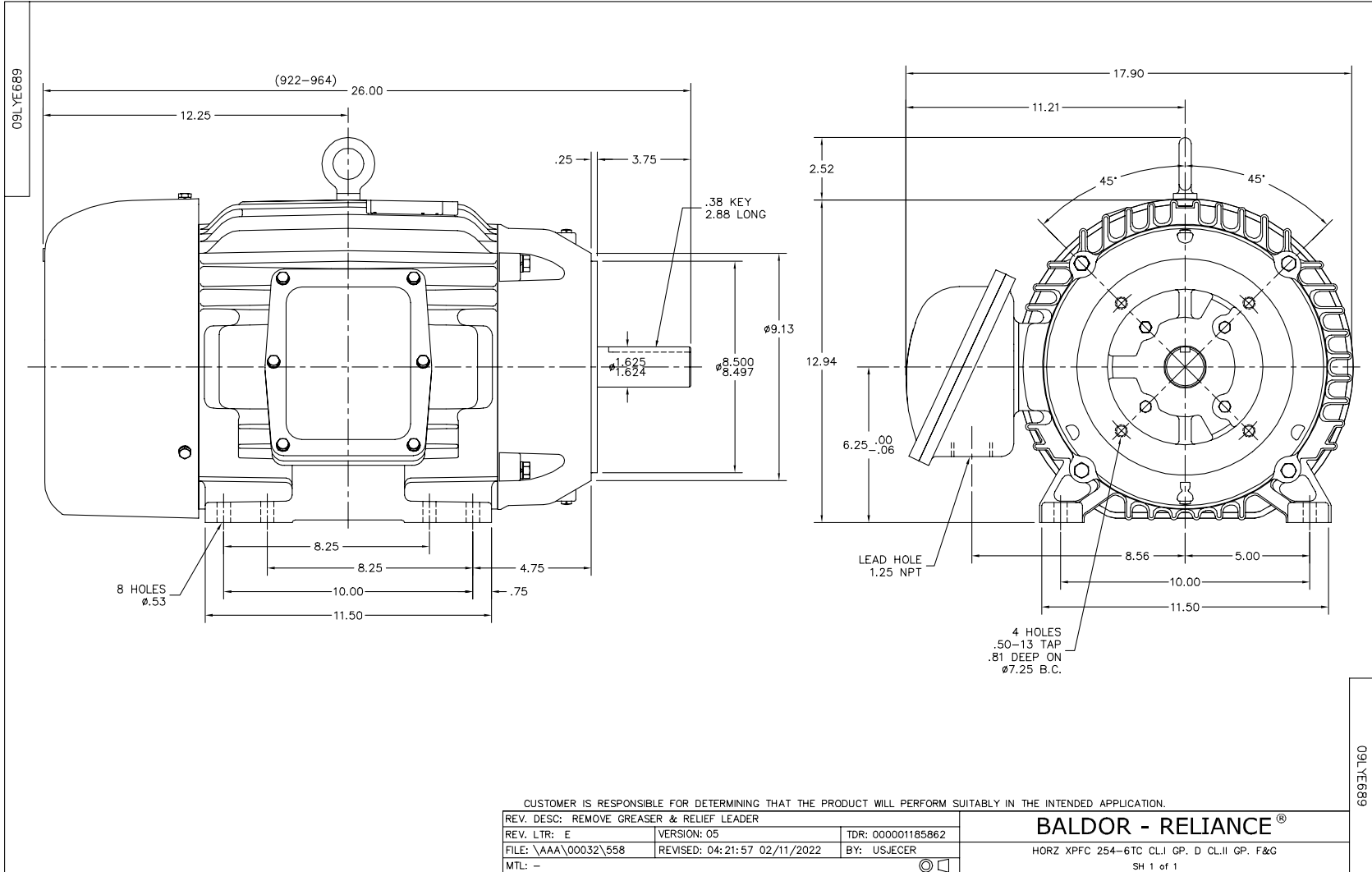
| Winding: 09WGZ601-R003 | | Type: 0936M | | Enclosure: TEFC | |
|-------------------------------|------------------|---------------------|--|------------------------------|------------|
| Nameplate Data | | | 380 V, 50 Hz: High Voltage Connection | | |
| Rated Output (HP) | 20//15 | | Full Load Torque | 26.7 LB-FT | |
| Volts | 230/460//190/380 | | Start Configuration | direct on line | |
| Full Load Amps | 46/23//42/21 | | Breakdown Torque | 106 LB-FT | |
| R.P.M. | 3520//2930 | | Pull-up Torque | 41.4 LB-FT | |
| Hz | 60//50 | Phase | 3 | Locked-rotor Torque | 52.5 LB-FT |
| NEMA Design Code | B | KVA Code | H | Starting Current | 157 A |
| Service Factor (S.F.) | 1.15 | | No-load Current | 6.99 A | |
| NEMA Nom. Eff. | 91 | Power Factor | 89 | Line-line Res. @ 25°C | 0.447 Ω |
| Rating - Duty | 40C AMB-CONT | | Temp. Rise @ Rated Load | 67°C | |
| S.F. Amps | | | Temp. Rise @ S.F. Load | 84°C | |
| | | | Locked-rotor Power Factor | 33 | |
| | | | Rotor inertia | 0.92 LB-FT ² | |

Load Characteristics 380 V, 50 Hz, 15 HP

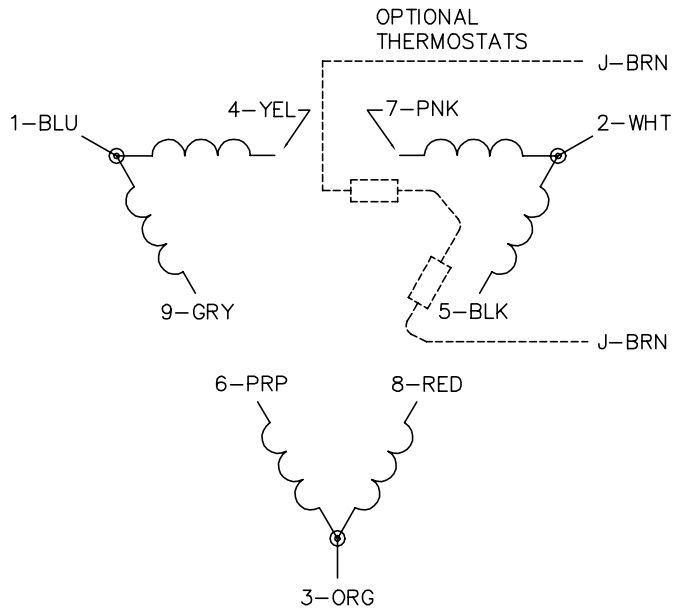
| % of Rated Load | 25 | 50 | 75 | 100 | 125 | 150 | S.F. |
|------------------------|-----------|-----------|-----------|------------|------------|------------|-------------|
| Power Factor | 55 | 76 | 85 | 88 | 90 | 90 | 89 |
| Efficiency | 88.8 | 92 | 92.1 | 91.3 | 90.2 | 88.7 | 90.6 |
| Speed | 2982 | 2966 | 2947 | 2928 | 2907 | 2882 | 2915 |
| Line amperes | 8.55 | 12 | 16.3 | 21 | 26.1 | 31.8 | 24.1 |

Performance Graph at 380V, 50Hz, 15.0HP Typical performance - Not guaranteed values

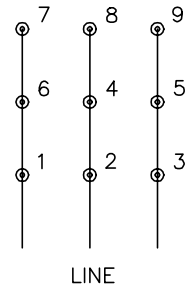




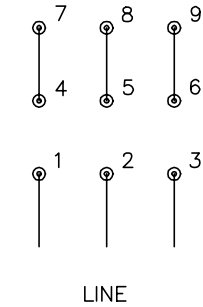
CD0180



LOW VOLTAGE
(2D)



HIGH VOLTAGE
(1D)



NOTES:

1. INTERCHANGE ANY TWO LINE LEADS TO REVERSE ROTATION.
2. OPTIONAL THERMOSTATS ARE PROVIDED WHEN SPECIFIED.
3. ACTUAL NUMBER OF INTERNAL PARALLEL CIRCUITS MAY BE A MULTIPLE OF THOSE SHOWN ABOVE.
4. LEAD COLORS ARE OPTIONAL. LEADS MUST ALWAYS BE NUMBERED AS SHOWN.

CD0180

| | | |
|-----------------------------------|------------------------------|-------------------|
| REV. DESC: ADD CLASS CONN00000007 | | |
| REV. LTR: D | VERSION: 01 | TDR: 000001099922 |
| FILE: \AAA\00005\148 | REVISED: 10:25:29 02/19/2019 | BY: ENBRIRO |
| MTL: - | © □ | |

BALDOR - RELIANCE®

3PH, DV, 9 LEADS, DELTA CONNECTION

SH 1 of 1

Marketing maintained PDF of MN416:

<http://www.baldor.com/support/Literature/Load.ashx/MN416?ManNumber=MN416>