



Customer information packet

CXT3034T-5

3HP, 1755RPM, 3PH, 60HZ, 182TC, 0632M, TEFC, F1

Class - CLI GP A,B,C,D

Division - Division II

Specifications

Enclosure	TEFC
Frame	182TC
Frame Material	Iron
Frequency	60.00 Hz
Motor Letter Type	Three Phase
Output @ Frequency	3.000 HP @ 60 HZ
Phase	3
Synchronous Speed @ Frequency	1800 RPM @ 60 HZ
Voltage @ Frequency	575.0 V @ 60 HZ
XP Class and Group	CL I GP A,B,C,D
XP Division	Division II
Agency Approvals	CCSA US CSA EEV NEMA PREMIUM UR
Ambient Temperature	40 °C
Auxillary Box	No Auxillary Box
Auxillary Box Lead Termination	None
Base Indicator	Rigid
Bearing Grease Type	Polyrex EM (-20F +300F)
Blower	None
Constant Torque Speed Range	3
Current @ Voltage	3.300 A @ 575.0 V
Design Code	B
Drip Cover	No Drip Cover
Duty Rating	CONT
Efficiency @ 100% Load	89.5 %
Electrically Isolated Bearing	Not Electrically Isolated
Feedback Device	NO FEEDBACK
Heater Indicator	No Heater
High Voltage Full Load Amps	3.3 a
Insulation Class	F

Part detail

Revision	-
Type	AC
Mech. spec.	
Base	
Status	PRD/A
Elec. spec.	06WGX319
Layout	06LYF921
Eff. date	07-09-2021
CD Diagram	CD0006
Poles	04
Leads	3#16
Proprietary	False
Created date	05-18-2021

Inverter Code	Inverter Duty
IP Rating	NONE
KVA Code	J
Lifting Lugs	Standard Lifting Lugs
Locked Bearing Indicator	Locked Bearing
Motor Lead Termination	Flying Leads
Motor Standards	NEMA
Motor Type	0632M
Mounting Arrangement	F1
Number of Poles	4
Overall Length	15.98 IN
Power Factor	77
Product Family	General Purpose
Pulley Face Code	C-Face
Rodent Screen	None
Service Factor	1.15
Shaft Diameter	1.125 IN
Shaft Ground Indicator	No Shaft Grounding
Shaft Rotation	Reversible
Speed	1755 rpm
Speed Code	Single Speed
Starting Method	Direct on line
Thermal Device - Bearing	None
Thermal Device - Winding	None
Vibration Sensor Indicator	No Vibration Sensor
Winding Thermal 1	None
Winding Thermal 2	None
XP Temp Code	T3C

Nameplate

NP4224L									
CAT.NO.	CXT3034T-5				I.P.	54			
SPEC.	06-0000-0935				ENCL	TEFC			
FRAME	182TC	H.P.	3		T. CODE	T3C			
VOLTS	575		P.F.	77					
F.L. AMPS	3.3		RATING	40C AMB-CONT					
R.P.M.	1755		USABLE AT 208V						
HZ.	60	PH.	3		CLASS	F			
SER.F.	1.00		DES.	B		SL HZ	1.5		
NEMA NOM. EFF.	89.5		WK2	0.3					
DE	6206		ODE	6205					
MAG. CUR.	1.7								
INV TYPE	PWM	CHP	60		TO	90		INV TEMP CODE	T3C
CT	3	TO	60		VT	3		TO	60
CC	010A		SN						
	1.15 SF ON SINE WAVE								

Parts list

Part number	Description	Quantity
SA395187	SA 06-0000-0935	1.000 ea
RA385915	RA 06-0000-0935	1.000 ea
LB1115N	LABEL,LIFTING DEVICE (ON ROLLS)	1.000 ea
LB1119N	WARNING LABEL	1.000 ea
LC0006	CONNECTION LABEL	1.000 ea
LB1449	DIV-2/NEC WARNING LABEL	1.000 ea
NP4224L	SS CP INV DIV-2 UL CSA-C US EEV PREM, DI	1.000 ea
85XU0407S04	4X1/4 U DRIVE PIN STAINLESS	2.000 ea
MN416A01	TAG-INSTAL-MAINT no wire (2100/bx) 4/22	1.000 ea
HW3201A05	3/8-16 EYEBOLT	1.000 ea
36FH4009A101	IEC FH NO GREASER, W/PRIMER	1.000 ea
51XW1032A06	10-32 X .38, TAPTITE II, HEX WSHR SLTD S	3.000 ea
36FN3000C01SP	EXFN, PLASTIC, 5.25 OD, .912 ID	1.000 ea
51XB1214A16	12-14X1.00 HXWSSLD SERTYB	1.000 ea
MJ1000A02	GREASE, POLYREX EM EXXON	0.050 lb
HA3101A34	THRUBOLT- 1/4-20 X 10.375	4.000 ea
36EP3104B47	FREP MACH W/O GRSR,RAISED FH PADS,SLING	1.000 ea
HW4600B32SP	V-RING SLINGER 1.000 X 1.540 X .24 VITON	1.000 ea
HW5100A05	WVY WSHR F/205 & 304 BRGS	1.000 ea
HA4067A01	PUSH IN DRAIN FITTING (BLACK)	1.000 ea
36EP3301A34	SPL PU. ENDPLATE - ENCLOSED	1.000 ea
HW4600B36SP	V-RING SLINGER 1.188 X 1.690 X .24 VITON	1.000 ea
10XN2520A28	1/4-20X 1 3/4 HEX HD	4.000 ea
HW1001A25	LOCKWASHER 1/4, ZINC PLT .493 OD, .255 I	4.000 ea
HA4067A01	PUSH IN DRAIN FITTING (BLACK)	1.000 ea
06CB3000	BALDOR CONDUIT BOX CAST	1.000 ea
06GS1000	GASKET,CONDUIT BOX	1.000 ea
51XW2520A12	SCREW, HEX SER SLT HD, ZN, 1/4-20 X .75	2.000 ea
11XW1032G06	10-32 X .38, TAPTITE II, HEX WSHR SLTD U	1.000 ea
HW3001B02	BRASS CUP WASHER W/GROUND SYMBOL TAB,	1.000 ea
06CB3500	BALDOR CONDUIT BOX LID	1.000 ea

06GS1001	BALDOR CONDUIT BOX GASKET	1.000 ea
51XW2520A12	.25-20 X .75, TAPTITE II, HEX WSHR SLTD	2.000 ea
MG1025L14	WILKOFAS, 776.14, GRUNDFOS BLACK	0.125 ga
36PA1001	PKG GRP, PRINT PK1017A06	1.000 ea
HW2501E16	KEY, 1/4 SQ X 1.750	1.000 ea
HA7000A02	KEY RETAINER RING, 1 1/8 DIA, 1 3/8 DIA	1.000 ea

AC Induction Motor Performance Data

Record # 47008

Typical performance - not guaranteed values

Winding: 06WGX319-R011		Type: 0632M		Enclosure: TEFC	
Nameplate Data			575 V, 60 Hz: Single Voltage Motor		
Rated Output (HP)	3	Full Load Torque	9.05 LB-FT		
Volts	575	Start Configuration	direct on line		
Full Load Amps	3.3	Breakdown Torque	33 LB-FT		
R.P.M.	1755	Pull-up Torque	18.2 LB-FT		
Hz	60 Phase	3	Locked-rotor Torque	20.3 LB-FT	
NEMA Design Code	B KVA Code	J	Starting Current	23.8 A	
Service Factor (S.F.)		1.15	No-load Current	1.7 A	
NEMA Nom. Eff.	89.5 Power Factor	77	Line-line Res. @ 25°C	6.22 Ω	
Rating - Duty	40C AMB-CONT		Temp. Rise @ Rated Load	35°C	
S.F. Amps			Temp. Rise @ S.F. Load	42°C	
			Rotor inertia	0.298 LB-FT ²	

Load Characteristics 575 V, 60 Hz, 3 HP

% of Rated Load	25	50	75	100	125	150	S.F.
Power Factor	38	59	71	77	81	83	79
Efficiency	83.1	88.4	89.8	89.6	89.1	87.7	89.3
Speed	1790	1779	1769	1757	1744	1730	1749
Line amperes	1.86	2.22	2.71	3.27	3.92	4.69	3.66

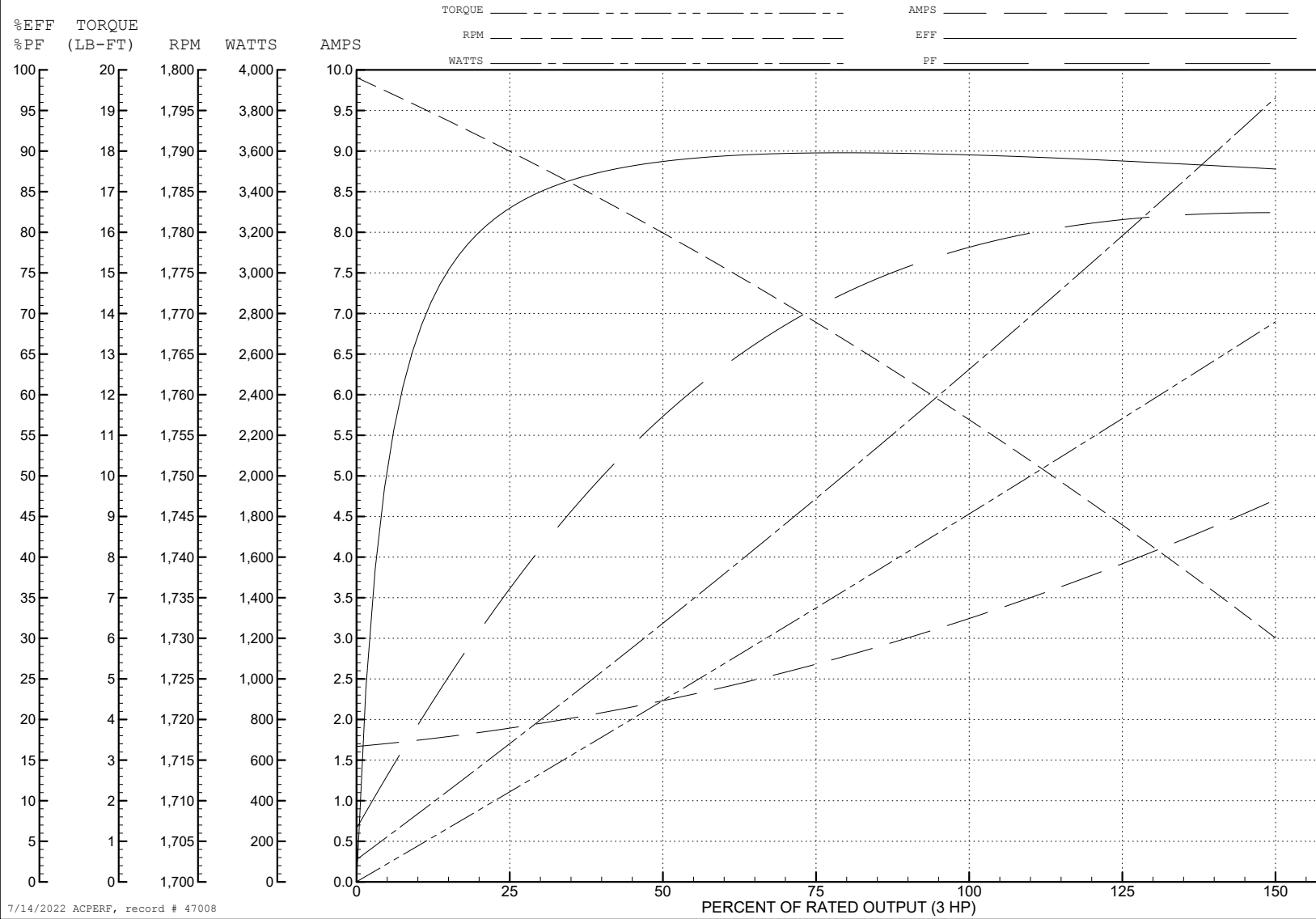
ABB Motors and Mechanical Inc.

WINDING # 06WGX319

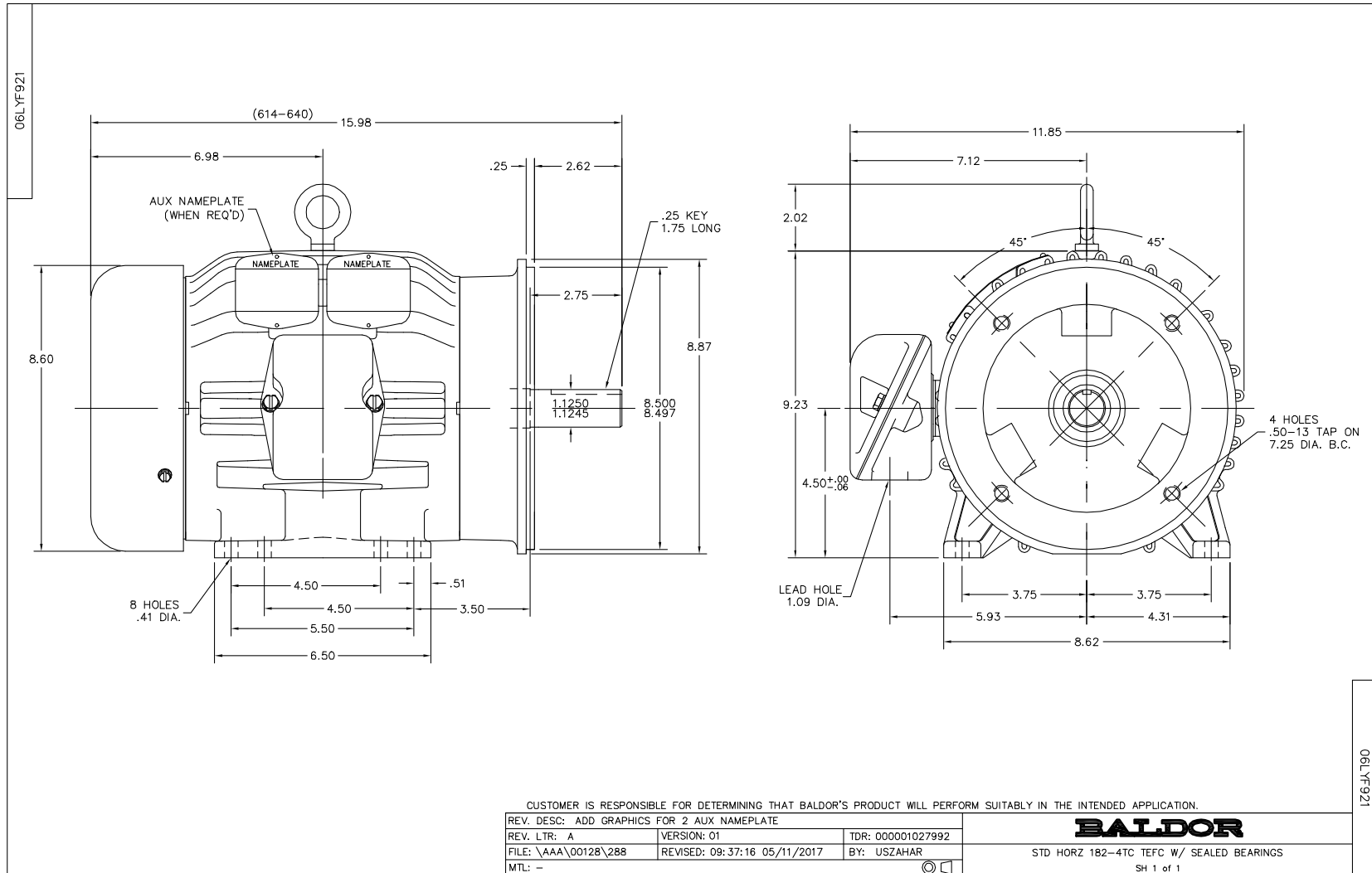
3 HP 3 PH 60 HZ 1755 RPM 575 V 0632M

Typical performance - not guaranteed values.

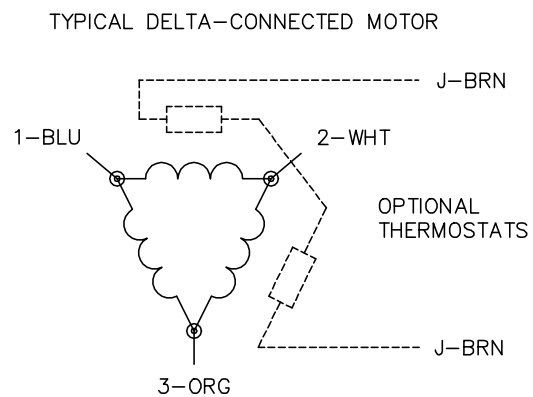
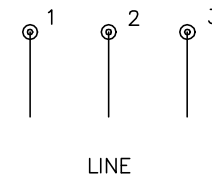
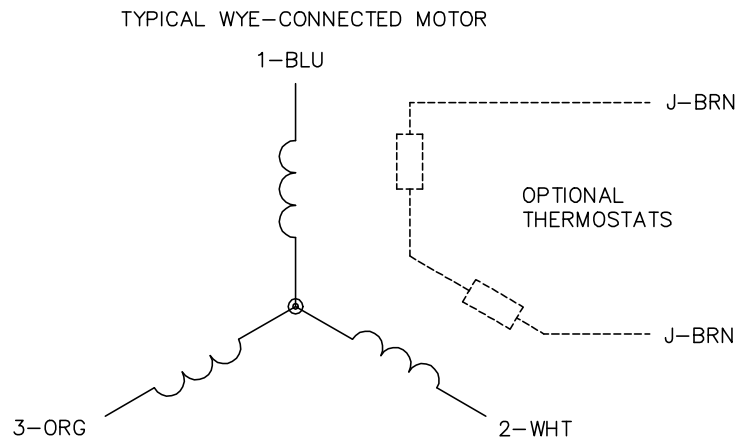
TORQUES (LB-FT): PO=33 PU=18.2 LR=20.3 LRA=23.8



7/14/2022 ACPERF, record # 47008



CD0006



NOTES:

1. THREE LEAD MOTOR MAY BE EITHER WYE CONNECTED OR DELTA CONNECTED.
2. INTERCHANGE ANY TWO LINE LEADS TO REVERSE ROTATION.
3. OPTIONAL THERMOSTATS ARE PROVIDED WHEN SPECIFIED.
4. ACTUAL NUMBER OF INTERNAL PARALLEL CIRCUITS MAY VARY.
5. LEAD COLORS ARE OPTIONAL. LEADS MUST BE NUMBERED AS SHOWN.

CD0006

REV. DESC: ADD CLASS CONN00000007		
REV. LTR: E	VERSION: 01	TDR: 000001099922
FILE: \AAA\00005\141	REVISED: 10:24:49 02/19/2019	BY: ENBRIRO
MTL: -	© □	

BALDOR - RELIANCE®

3PH, SV, 3 LEADS, WYE OR DELTA CONNECTED

SH 1 of 1